

American Range

Shim Kit Instructions-Legacy (AROFG) Series

Parts Included:



14 GAUGE



16 GAUGE



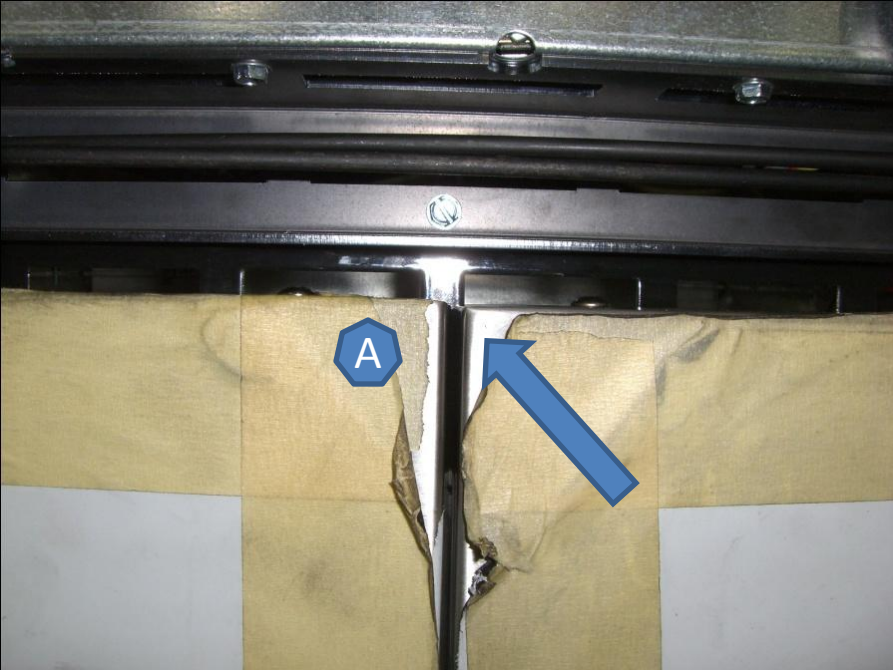
18 GAUGE



20 GAUGE

Tools Required:

Flat head Screwdriver

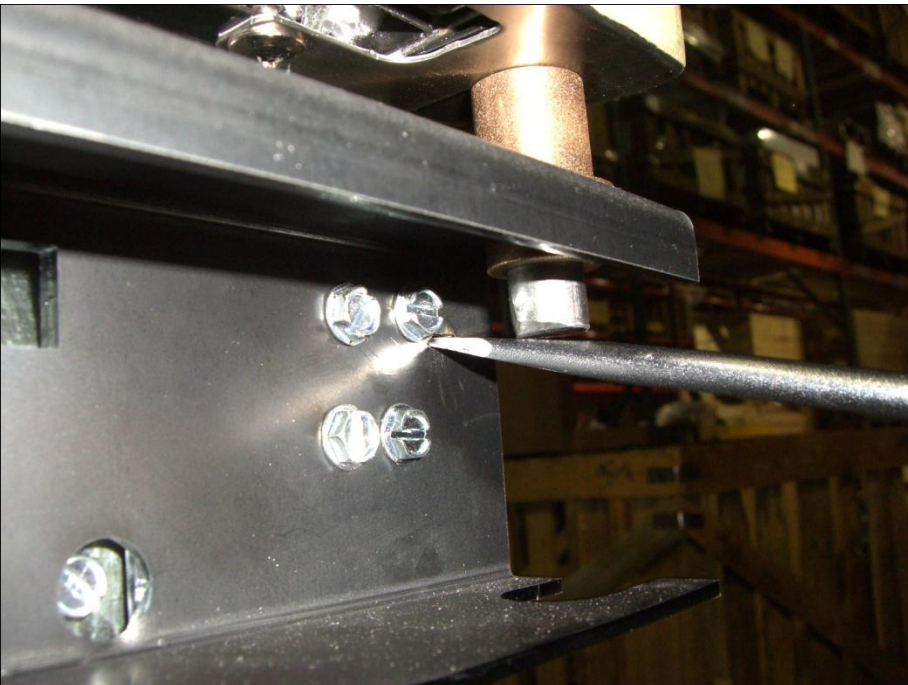


1) Locate which door is lower. As in figure A.

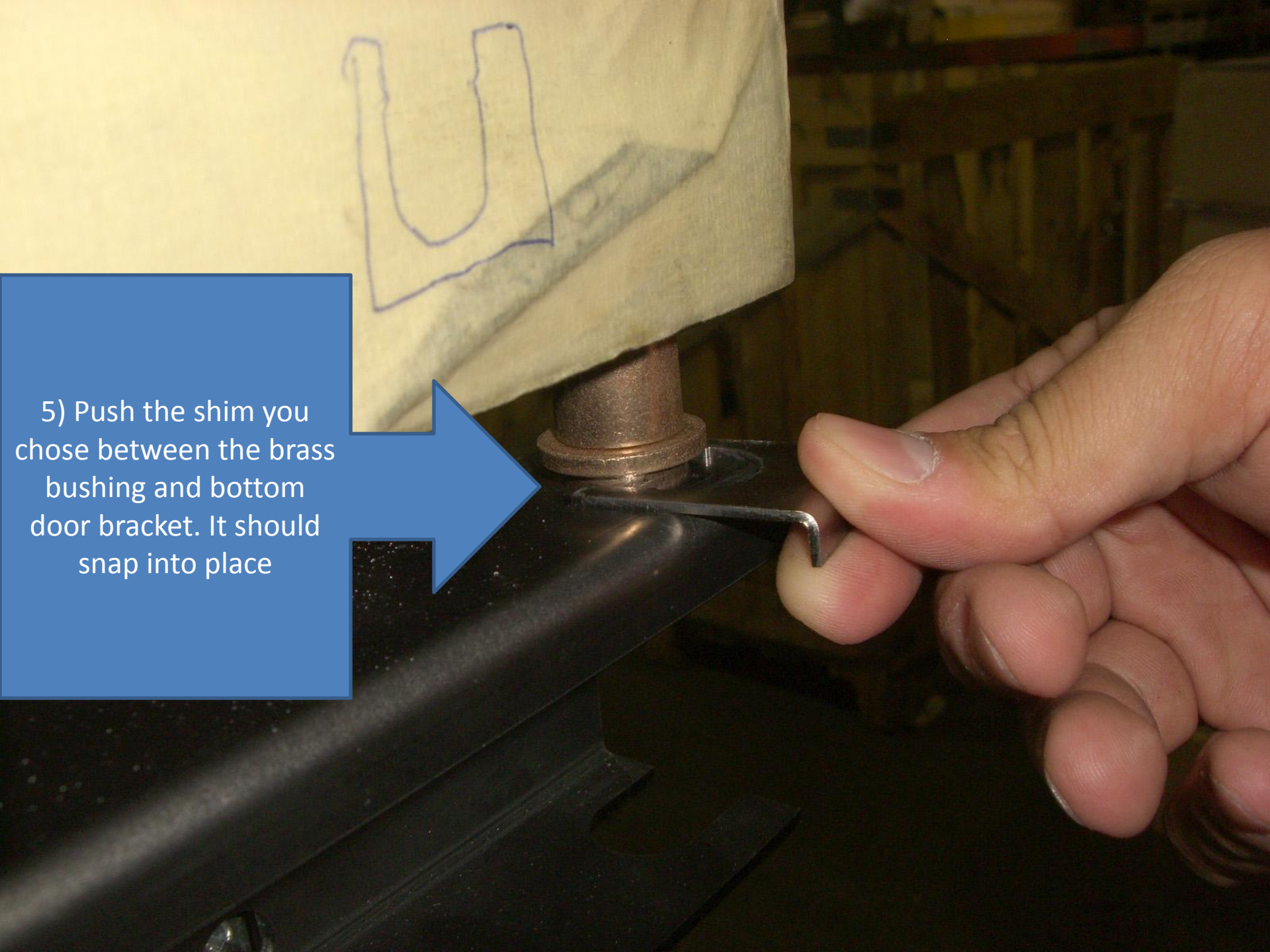
2) Choose which shim will best level doors. As in figure B.



3) On the side of the lower door, use a flat head screwdriver to lift the door.



4) Use the slot in the bottom door bracket to give you enough leverage to lift door.

A close-up photograph showing a person's hand using a thin metal shim to adjust a door bracket. The shim is being pushed between a brass bushing and a black door bracket. A blue text box on the left contains the instruction: "5) Push the shim you chose between the brass bushing and bottom door bracket. It should snap into place". A blue arrow points from the text box to the shim. In the background, a piece of paper with a blue outline of a door handle is visible.

5) Push the shim you chose between the brass bushing and bottom door bracket. It should snap into place

6) Open and close doors. Doors should now be level.

