

Model type:
LV650AIX

Commercial code:
F029921

General notes

Technical Documentation guidelines

You can find herewith some generic information to simplify consulting of technical documentation:

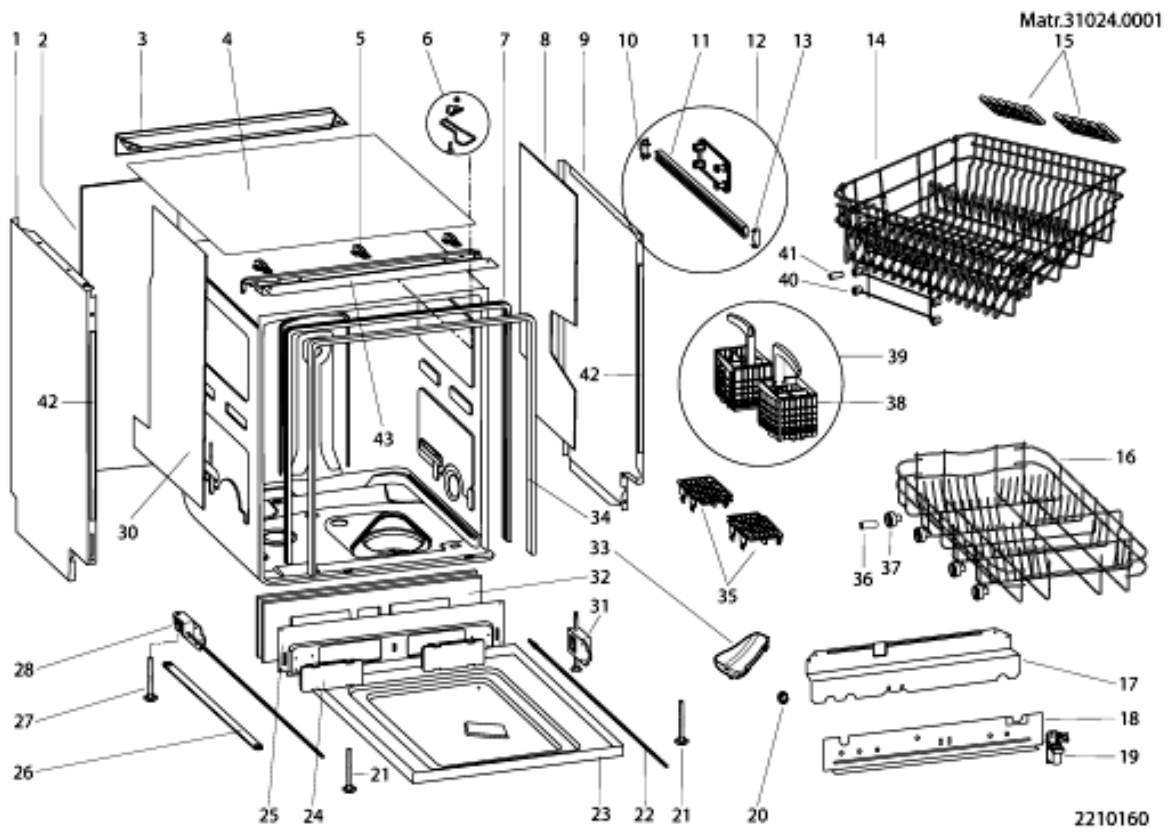
1. Models of same range share the same exploded views, which report the richest set of spare parts: generally, a model does not necessarily have a related spare part for each particular shown on exploded views.
2. Some spare parts can not be represented directly on the exploded views (instruction booklets, specific kit, etc...). You can find those codes in the spare parts list with the same reference of particular where spares are installed or with references 099, 999. Instruction booklets, once managed, appear with 000 reference.
3. On the higher right site of each exploded view there is a serial number which indicates the beginning of the production of certain range: some models might have more than an exploded view for a given category, each distinguished by a different serial no. and linked to another spare parts list, In this case, serial no. is required to supply the right spare part code. Exploded view to be considered is the one with a more recent serial no. but previous than the one of the model that needs assistance.
4. Exploded views might require further updates even after publishing. Addition of new spares will go on following the already existing numeration references. Revision number of an exploded view is shown into last four digits of serial number into upper right hand corner.
5. The spare parts list associated to an exploded view shows related codes of spares managed for a certain model; for each spare part other informations are available:

REF: reference no of spare into a table; SUBSTITUTE: list of spare(s) which can replace a code but that keeps same functional characteristics

INDUSTRIAL CODE: list of variables of a model (shown into model label) where such spare is used; NOTICE: code of information(s) to refer to complete technical intervention, track for changes or to find correct spare part code.
6. Some notices, into a same section are generic therefore cannot be directly linked to a spare part. In order to assist a model in the best way as possible, it is helpful to pay attention to all notices and constantly verify documentation updates
7. Technical documentation cover shows model name and its commercial codes

2210160

Exploded views



2210160

Spare parts list

Ref.	Code	From	To S/N	Substitute	Description	Notice	Industrial
000	C00097893				instruction book it-gb-ft-de-nl-es-		
001	C00092827			1 x C00092835	left side panel lh zinc		
003	C00033591				rear support - top		
004	C00141310				upper panel polionda 60cm evo3	n1045127	
006	C00085024			1 x C00037135 1 x C00297907 1 x C00297909 1 x C00297910	catch plate (cabinet)		
007	C00116110			1 x C00141317	door seal - top and sides mm1608	n1045127	
007	C00141317				top and side door seal (1638mm)	n1045127	
009	C00092828			1 x C00092835	right side panel lh zinc		
010	C00094117				rail back stop evo3		
011	C00094116			1 x C00094112	basket runner - upper evo3		
012	C00094112				runner assembly		
013	C00094118				runner end stop		
014	C00094235				upper basket noclik/clak evo3	n1045069 n1045076	37299210000 37299210100
014	C00108980			1 x C00297566	upper basket noclik/clak markii		37299210200
015	C00053522			1 x C00056438	flap upper basket white27		
016	C00056397			1 x C00054825	lower basket 'lsv6lix'		
017	C00091600				rear support - middle		
018	C00091598				lower rear support reflex		
019	C00078395			1 x C00076659 1 x C00143383	radio interference suppressor		
020	C00054830				drain hose fastener		
021	C00092555				foot 155mm		
022	C00082476				rear foot adjustment assembly		
023	C00092554			1 x C00118842	tray on bottom of tub 60cm		
024	C00054833				top for front support		
025	C00091599			1 x C00119016	front support lower 60cm		
026	C00076656				slide for foot		
027	C00092822				adjustable back foot		
028	C00092820				left rear foot adjustment assembly		
031	C00092821				rear foot adjustment assembly		
033	C00088301				grease box		

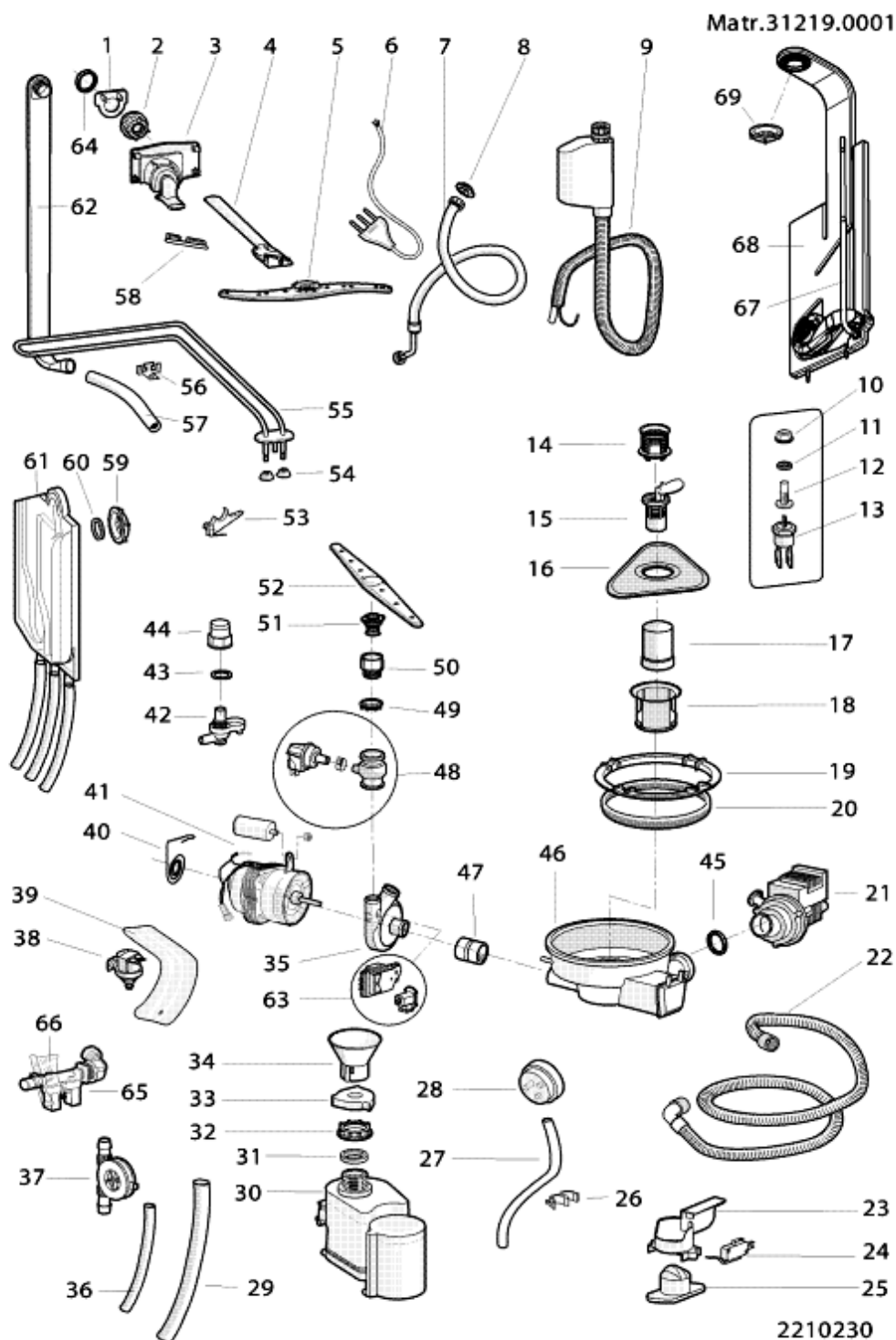
2210160

Spare parts list

Ref.	Code	From	To S/N	Substitute	Description	Notice	Industrial
034	C00054932				frame support for tub seal 60cm	n1045047	
035	C00078869				cutlery basket divider		
036	C00104638				basket roller axis		
037	C00056347				lower basket wheel		
039	C00079023			1 x C00094297	cutlery basket		
040	C00094191			1 x C00109840	upper basket roller evo3		
041	C00094189				roller axle upper basket		
042	C00086602				edge cover right		
042	C00086603				edge cover left		
043	C00079013				door spring adjuster		
099	C00036547				anti condensation strip - worktop		
099	C00094138				lower basket buffer evo3		

2210230

Exploded views



2210230

Spare parts list

Ref.	Code	From	To S/N	Substitute	Description	Notice	Industrial
001	C00054925				upper was basket guide casing		
002	C00054862			1 x C00144315	ring-nut fasten.external hose top		
003	C00094134			1 x C00110526	water supply distribution assembly	n1045084	
				1 x C00110527			
003	C00110526				water supply distribution assembly		
004	C00054926			1 x C00110526	upper wash arm feed pipe	n1045084	
				1 x C00110527			
004	C00110527				upper wash arm feed pipe		
005	C00075746				upper wash arm curved set		
006	C00083706			1 x C00143371	supply cable schuko		
				1 x C00144229			
009	C00083761				inlet hose - includes antioverflow		
010	C00097871				lock nut m8 + washer 'lvs'		
011	C00063792				seal o-ring		
012	C00063791				temperature sensor		
013	C00041086				thermostat safety 78ønc (dw)		
013	C00063788			1 x C00097871	lock nut m8 inox		
013	C00063790				washer d.8 mm inox		
014	C00094158			1 x C00142344	filter grid evo3	n1045083	
015	C00054863			1 x C00142344	central filter		
015	C00094156			1 x C00142344	central filter basket/retainer evo3	n1045083	
016	C00054851			1 x C00145075	outlet filter stainless lvs2000		
017	C00081164			1 x C00142344	filter cylindrical		
017	C00094164			1 x C00142344	filter cylindrical evo3	n1045083	
018	C00061929				outer fine rotating polyester filter		
019	C00054854				sump fixing ferrule		
020	C00054828				gasket - sump fixing ring		
021	C00096072		70317...	1 x C00112306	drain pump 230v 50hz evo3	n1045133	
021	C00143766	70318...			drain pump (td)		
022	C00054869				drain hose		
023	C00081162				container - overflow unit		
024	C00037205			1 x C00143107	microswitch		
025	C00058843				float - overflow unit		
026	C00095801				pressure hose clip evo3		
027	C00094154				pipe pressostat lvs evo3		

2210230

Spare parts list

Ref.	Code	From	To S/N	Substitute	Description	Notice	Industrial
028	C00094151			1 x C00143740	pressure switch 90 71 evo3		
029	C00094267				tube water inlet air-break/turbine	n1045085	
029	C00110612			1 x C00111855 1 x C00115348	tube water inlet electrovalve/air-	n1045085	
030	C00094171				water softener adjustable evo3		
031	C00103610				seal - softener/wash chamber		
032	C00041090			1 x C00144235	retaining ring - softener		
033	C00056435				salt cap		
034	C00005819				salt funnel		
035	C00055005				pump cover		
036	C00054868				tube - softener/sump 1.(480mm)		
037	C00094172				turbine evo3	n1045085	
040	C00076628				tub spring		
041	C00076627				wash motor/pump assy 220v-60w		
042	C00094159		60903...		overflow connector evo3		
042	C00196353	60904...			overflow connector evo3		
043	C00075695				connection gasket overflow		
044	C00143580		60903...		bodytop overflow evo3 rohs		
044	C00196352	60904...		1 x C00094159 1 x C00143580	bodytop overflow evo3 rohs		
045	C00054917				seal 'o'ring (23,81x2,62)		
046	C00094143			1 x C00141158	set sump evo3		
047	C00079016				pipe rubber sump-pump		
048	C00094157			1 x C00142435 1 x C00144125	high pressure sensor assembly		
049	C00075057			1 x C00075111	cap corner for support washing		
050	C00066643			1 x C00075111	support - lower wash arm bush		
051	C00066642			1 x C00075111	ring-nut for fastening bottom		
052	C00075108				lower wash arm inox 60cm		
054	C00074714				terminal protection - heating		
055	C00066598			1 x C00144898	heating element 2000w/230v		
056	C00054872				support bracket - heating element		
057	C00076233				pump junction pipe		
058	C00056342				steel pin fixing upper wash arm	n1045084	
059	C00054927			1 x C00144335	ring-nut for air-flow body		

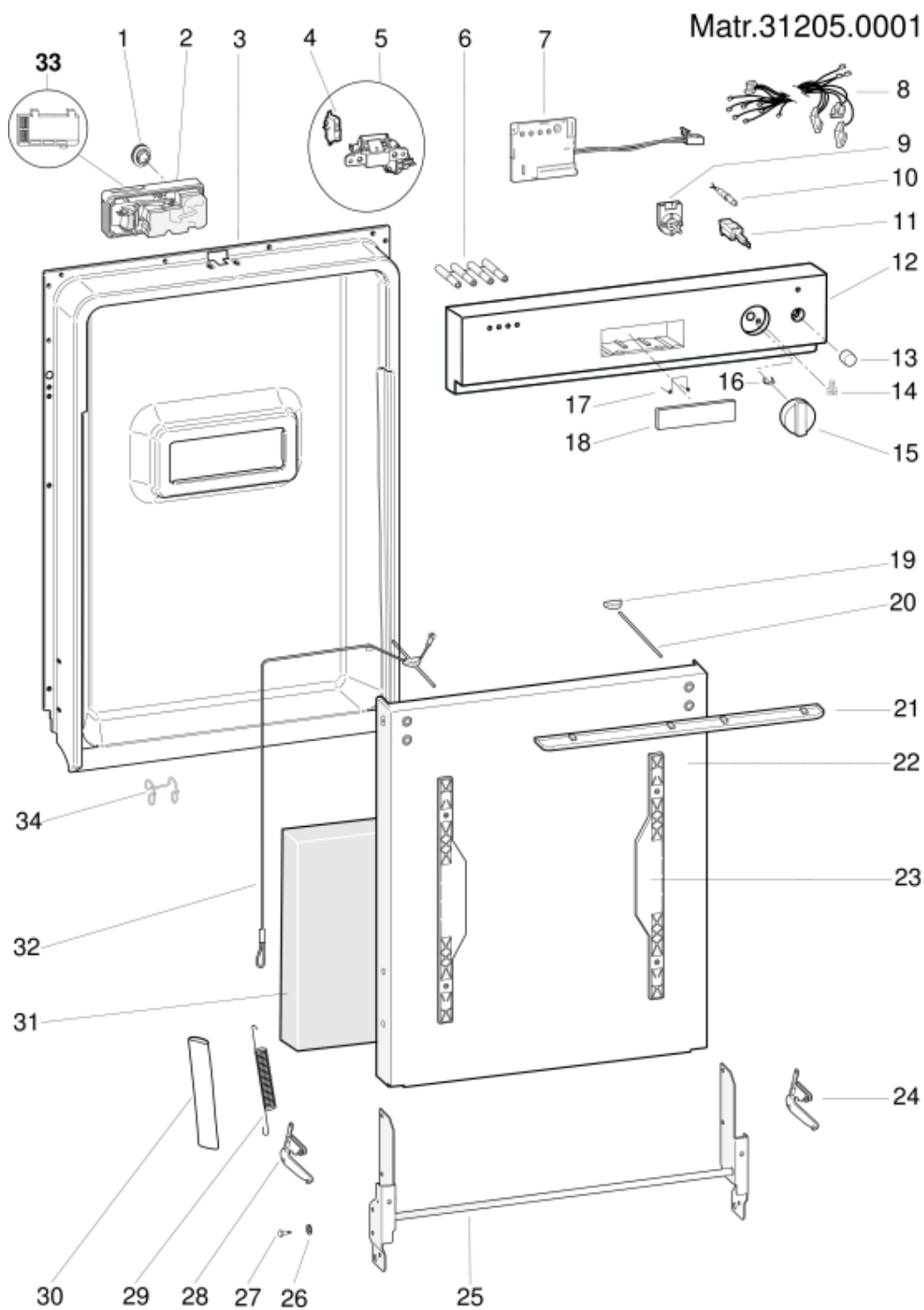
2210230

Spare parts list

Ref.	Code	From	To S/N	Substitute	Description	Notice	Industrial
060	C00084600				o ring seal 38 mm		
061	C00094174				water inlet air break evo3	n1045085	
061	C00110610			1 x C00115360	air break + turbine evo3	n1045085 n1045127	
061	C00141308			1 x C00141655	air break + turbine evo3	n1045127	
062	C00056001				upper wash arm feed pipe		
064	C00075686			1 x C00285074	jet gasket		
065	C00084558			1 x C00143737	load electrovalve	n1045085	
065	C00087337				collar seal		
065	C00094168				2-way electrovalve 4lt/1 evo3	n1045085	
066	C00094160				protection electrovalve evo3		
070	C00098769				upper wash arm seal		
099	C00033026			1 x C00292523	ambljgon grease ta 100 gr.		
099	C00073917				clamp for pump cover		
099	C00075879				clamp		
099	C00084479				hose clamp d=14,9		
099	C00094150				clip pressure sensor evo3		
099	C00094162				pipe fixing band on turbine		

2210390G

Exploded views



2210390G

2210390G

Spare parts

list

Ref.	Code	From	To S/N	Substitute	Description	Notice	Industrial
001	C00051755				rinse aid cap (pair) raised & flush		
002	C00094133			1 x C00143377	electrodispenser(lamp rinseaid-no		
003	C00091543			1 x C00290247	door seal lower 60cm		
003	C00095276				inner door panel stainless evo3	n1045076 n4509a00	37299210000 37299210100
003	C00109698			1 x C00290243	inner door panel built-in		37299210200
004	C00085358				microswitch		
005	C00094128			1 x C00195887	locking assembly evo3		
006	C00087407				pilot lamp lens		
007	C00096235			1 x C00097890	control card bit100.1 'p1' +		
007	C00108957				bracket for timer bit 100		
008	C00097895		70317...	1 x C00115039	wiring harness assembly		
008	C00256791	70318...			parallel wiring harness assy		
009	C00078582				selector 8x210		
010	C00085359				pilot light red 230v		
011	C00096884			1 x C00142650	on-off switch (double pole)		
012	C00098003		60910...	1 x C00195192 1 x C00195314	console inox lv650aix		
012	C00195314	60911...			console inox lv650aix		
013	C00097904		60910...	1 x C00112993	grey vesmalit push button		
013	C00112993	60911...			inox push button on-off		
014	C00087976				cap	n1045053	
015	C00097903		60910...		knob grey vesmalit		
015	C00195192	60911...			knob grey vesmalit		
016	C00034319			1 x C00104581	knob plate		
017	C00094966				door spring		
018	C00091872		60910...	1 x C00113004	dashboard blanking plate		
018	C00113004	60911...		1 x C00283357 1 x C00288903	console panel blanking plate - inox		
019	C00054933				spring adjustment piece		
020	C00055000			1 x C00143736	special screw for spring		
021	C00060102				height adjusting strip-control		
022	C00095269				door panel zinc		
024	C00065127			1 x C00054815	hinge item, right		
025	C00096996				hinge assembly 'lvs evo3'		

2210390G

Spare parts

list

Ref.	Code	From	To S/N	Substitute	Description	Notice	Industrial
026	C00058776				washer d = 6 mm		
027	C00048504				hinge pin		
028	C00065128			1 x C00054817	hinge item, left		
029	C00086467				door spring		
030	C00066426				tube hinge spring		
031	C00095273				door spacer	n1045088	
032	C00054936				spring adjustment wire		
033	C00098134				door detergent electrodispenser	n1045069	
034	C00140679				seal spring	n1045127	
099	C00076108			1 x C00012687	screw canoe klip		
099	C00094120				fixing bolt inner door/dashboard		
099	C00094141				fixing screw inner/outer door		
099	C00095275			1 x C00256870	installation kit		
099	C00096824				new inox door xdd72 (fim) ##		
099	C00111286				transparent door lvs evo3 60cm ##		

Notices

n1045048: BIT 100 CARD INITIALIZATION

Free-standing dishwasher

- 1- Close the door and switch the dishwasher on.
- 2- Wait for the test cycle to start (2 LEDs light up or "ROD" appears on dishwashers with display).
- 3- Wait 10 seconds (dishwasher will start to fill water...)
N.B. If the cycle fails to start the card has probably already initialized, so proceed to point 5.
- 4- To reset the test cycle turn the programme button to reset or hold down the start/reset button for 5 seconds. (Wait for the buzzer to beep three times or if the dishwasher does not have a buzzer, wait for the programme LEDs to switch off.)
- 5- To check the aforementioned steps have completed successfully, select a programme and see if it starts; (reset it after this check).
- 6- The dishwasher is ready for the customer.

Built-in dishwashers

- 1- Close the door and switch the dishwasher on.
- 2- Wait for the test cycle to start
- 3- Wait 10 seconds (the dishwasher will start to fill...)
N.B. If the cycle fails to start the card has probably already initialized, so proceed to point 5.
- 4- To reset the cycle, open the door (2 LEDs lit up) and press the programme button for three bips of the buzzer (or until the programme LEDs go off for dishwashers with no buzzer).
- 5- To check the aforementioned steps have completed successfully, press the select programme button and check that the indicator light beside the corresponding programme comes on.
- 6- The dishwasher is ready for the customer.

n1045053: Final run plug for programmes handle

On dishwashers concerned with the current notice to adapt the commutator 8 positions on appliances with 4, 5 or 6 wash cycles, the plug for the final cycle will be employed for the programmes handle Code Sat. 087976.

The mentioned particular will be inserted according to the appliance's cycles assisted on the appropriate slot.

See diagram NT008000.



n1045069: Modification of racks and dispenser lid on EVO3 dishwashers

To obtain better dissolving of the detergent during the wash cycle, the following modifications have been made to EVO3 dishwashers:

- new dispenser lid, replacement code 098134 (see figure N1045069FIG4) created;
- upper racks modified with lid catch angle changed from 9° to 16° (see figure N1045069FIG5);
- MultiSystem lower racks modified with insertion of a spacer wire at the electric dispenser (see figure N1045069FIG6).

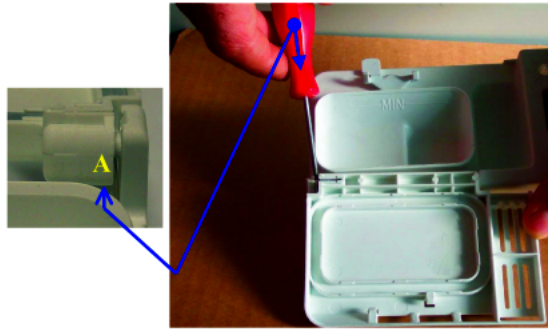
The upper and lower racks have the same spare part codes as the premodification items; Replacements Warehouse stocks have been replaced.

Lid installation instructions:

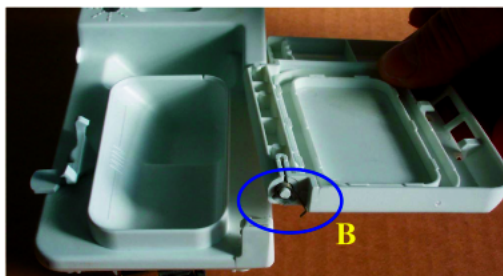
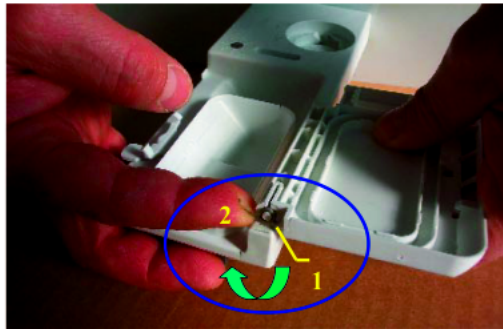
- 1) prise the lid out of the dispenser seat using a small screwdriver at point A (figure N1045069FIG1);
- 2) replace the lid, checking that release spring B (figure N1045069FIG2) is in place; before fitting the new lid load the spring from position 1 to position 2 (figure N1045069FIG2);
- 3) fit the lid in its special seat and check for correct operation (figure N1045069FIG3).

Lid closing may be harder for the first few cycles after replacement, due to settling of the material.

N1045069FIG1



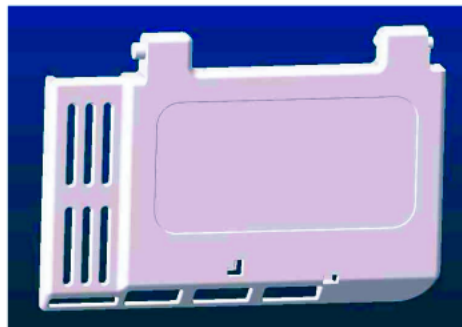
N1045069FIG2

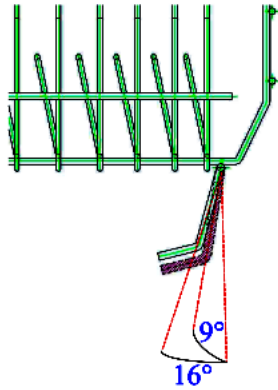
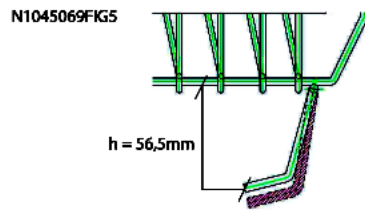


N1045069FIG3

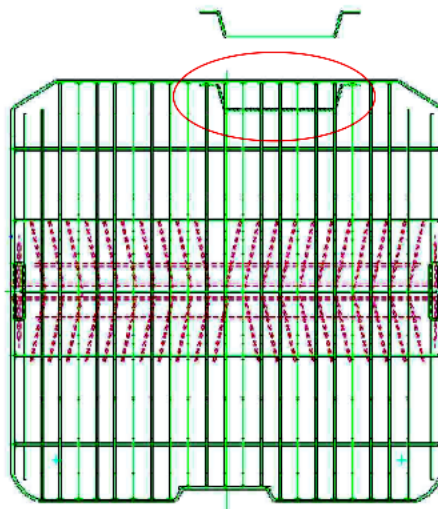


N1045069FIG4





N1045069FIG6



n1045076: Different position of electric distributor.

The position of the electric distributor has been changed as shown in the attached illustration.
The new machines have a new industrial code.

Introduced items:
C00108980 upper rack
C00109698 inside door

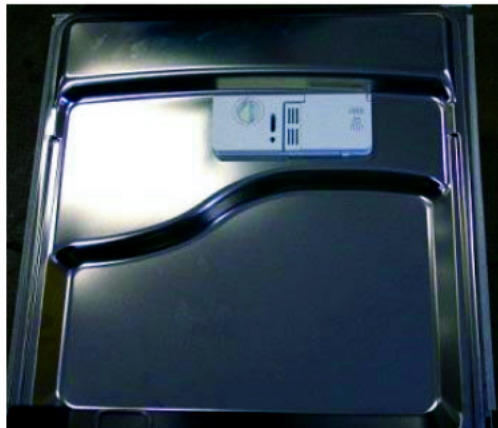
Premodification items:
C00094235 upper rack
C00095276 inside door

The following list shows the affected models with the relevant modification start serial numbers.

cc 29511 s/n 40315.0001 LI620
cc 29941 s/n 41026.0001 LV620IX
cc 29921 s/n 41115.0001 LV650AIX
cc 29939 s/n 41120.0001 LV620BK
cc 29940 s/n 41129.0001 LV620WH
cc 29924 s/n 41216.0001 LV650AWH
cc 29922 s/n 41217.0001 LV650AALU
cc 29925 s/n 41218.0001 LV650ABK
cc 29923 s/n 50112.0001 LV650AOW

N1045076FIG1

Mark II



n1045082: Timer Bit 100 programmes for Evo3 60cm dishwashers

Table N1045082FIG1 shows information relevant to the programmes of the following Timer Bit 100 for Evo 3 60 cm dishwashers:

Timer BIT 100 - E1 - Service code 097890 (rohs 143206);
Timer BIT 100 - E2 - Service code 097481 (rohs 143207);
Timer BIT 100 - E3 - Service code 099892 (rohs 143208);
Timer BIT 100 - S1 - Service code 109875 (rohs 143211).

PROGRAMMES:

- 1) Energico or Super Wash or Intensive
- 2) Normal or Daily
- 3) Eco (Ciclo per Istituti)
- 4) Rapido
- 5) Ammollo
- 6) Cristalli
- 7) Special Guest
- 8) Just you
- 9) Duo-Wash o Crystal and Pot

PROGRAMME PHASES:

- A) Pre-wash
- B) Pre-wash
- C) Wash
- D) Rinse
- E) Rinse
- F) Rinse
- G) Drying

PROGRAMME MODIFICATIONS ARE INDICATED IN RED.

TIMER BIT 100 - EVO 3

PROGRAMS	PROGRAM PHASES							Effective Time	Kwh	L
	A	B	C	D	E	F	G			
1	X	40°C	65°C	cold	cold	65°C	✓	120'	1,4	23,0
2	X	X (ex:cold)	55°C	cold	X	70°C	✓	72'	1,25	16,0
3	cold	cold	50°C	X	X	65°C	✓	130'	1,05	18,0
4	X	X	47°C (ex:40°C)	62°C	X	X	extradry	24'	0,7	10,0
5	cold	X	X	X	X	X	X	12'	0,01	4,0
6	X	X	52°C (ex:55°C)	45°C	X	65°C	✓	96'	1,16	16,0
7	X	X	X	X	X	65°C	✓	36'	0,8	6,0
8	X	X	50°C	67°C	X	X	✓	40'	0,9	10,0
9	cold	X	52°C (ex:55°C)	45°C	X	65°C	✓	106'	1,18	18,0

n1045084: Elimination of duct fixing pin code 056342

Duct fixing pin code 056342 has been eliminated from all dishwashers affected by this note, modifying the connection between

the feeder-distribution assembly and the internal duct.

Introduced items:

Internal duct 110527

Feeder-distribution assembly 110526

Eliminated items:

Internal duct 054926

Feeder-distribution assembly 094134 (EX 054871)

Duct fixing pin 056342

The modification has been introduced progressively, starting from serial no. 40517.0001.

n1045085: Introduction of new litre counter turbine integrated on air-break.

All dishwashers affected by this note have been equipped with a new litre counter turbine on the air-break. Picture N1045085FIG1 illustrates the premodification structure, picture N1045085FIG2 the new structure.

Items affected by the modification.

AIR-BREAK:

new 110610;

premodification 094174;

the new item features a new integrated litre counter turbine and its water supply hose has a smaller diameter.

LITRE COUNTER TURBINE code 094172 has been eliminated.

SOLENOID VALVES:

new:

1-WAY code 110611;

2-WAY code 084558(Rohs 143737);

premodification:

1-WAY code 094227;

2-WAY code 094168;

the new solenoid valves have a smaller diameter drain hose fitting.

HOSES:

new solenoid valve hose/air-break code 110612;

premodification turbine hose/air-break code 094267;

premodification solenoid valve hose/air-break code 094267;

the new hose has a smaller internal diameter.

WIRING:

the litre counter turbine connecting cable is longer, but since the connector is the same, the new item can be used in place of the premodification one.

Affected models with related modification introduction serial numbers:

BCI 450 - 30386 s/n 41001.0001;

BFI 620 - 30708 s/n 41001.0001;

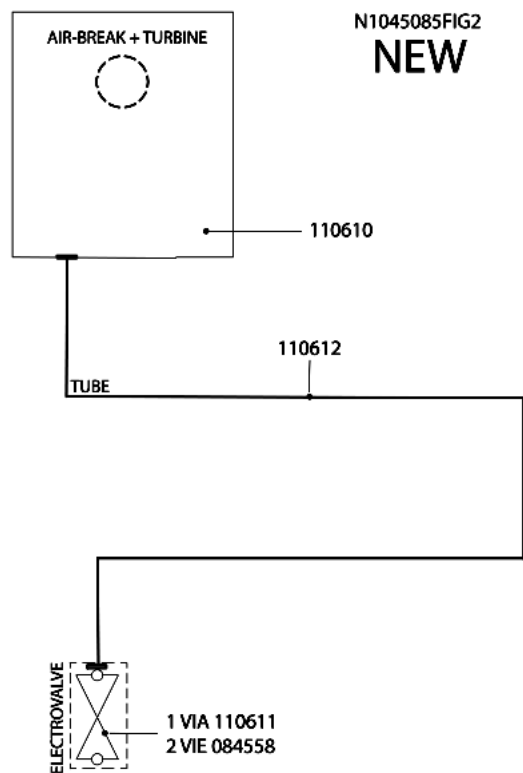
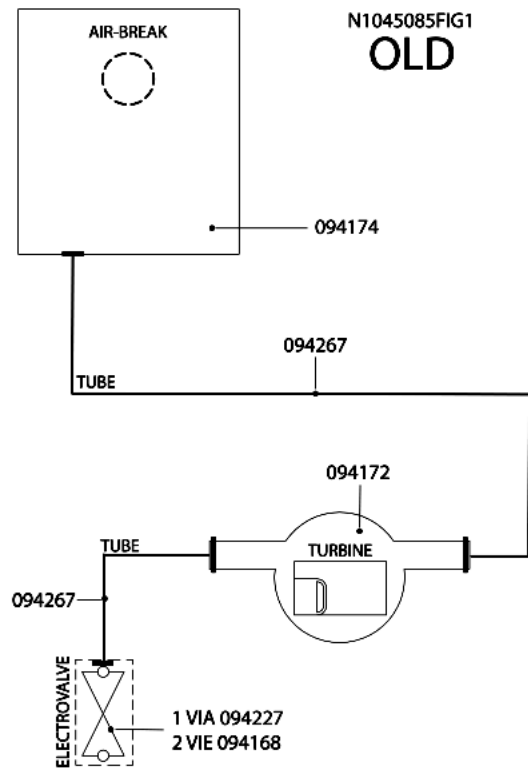
BFI 680 - 30715 s/n 40902.0001;

BFV 620 B - 30718 s/n 41001.0001;
BFV 620 K - 30717 s/n 41001.0001;
BFV 620 W - 30719 s/n 41001.0001;
BFV 620 X - 30720 s/n 41001.0001;
DI 6 - 29930 s/n 41001.0001;
DI 620 A - 29932 s/n 40830.0001;
DI 620 - 29931 s/n 41001.0001.
DI 620 UK - 30351 s/n 41001.0001;
DI 630 A - 30369 s/n 41001.0001;
DV 620 BK - 29927 s/n 41001.0001;
DV 620 BK UK - 30349 s/n 41001.0001;
DV 620 K IX UK - 30350 s/n 41001.0001;
DV 620 WH - 29928 s/n 41001.0001;
DV 620 WH UK - 30348 s/n 41001.0001;
DV 630 A BR - 30695 s/n 40830.0001;
DV 630 A IX - 30693 s/n 40830.0001;
DV 630 A WH - 30694 s/n 40830.0001;
DV 640 A IX - 30368 s/n 40830.0001;
DV 650 A IX - 30696 s/n 40830.0001;
DV 650 A WH - 30697 s/n 40830.0001;
DV 670 A BR - 30701 s/n 40830.0001;
DV 670 A IX - 30699 s/n 40830.0001;
DV 670 A WH - 30700 s/n 40830.0001;
DV 620 IX - 29929 s/n 40531.0001;
DVG 621 BK - 33220 s/n 40830.0001;
DVG 621 IX - 33212 s/n 40830.0001;
DVG 621 WH - 33221 s/n 40830.0001;
DWM 55 A - 29793 s/n 41001.0001;
DWT 10 P.2 - 32228 s/n 40830.0001;
FDW 20 P - 33182 s/n 41001.0001;
FDW 80 G - 33189 s/n 41001.0001;
FDW 80 P - 33187 s/n 41001.0001;
FDW 80 T - 33188 s/n 41001.0001;
FDW 85 A - 33190 s/n 41001.0001;
FDW 60 G - 33185 s/n 41001.0001;
FDW 60 P - 33183 s/n 41001.0001;
FDW 60 T - 33184 s/n 41001.0001;
FDW 65 A - 33186 s/n 41001.0001;
IDE 100 (EU) - 30666 s/n 41001.0001;
IDE 100 S (IT) - 30216 s/n 41001.0001;
IDE 100 SK - 30758 s/n 41001.0001;
IDE 1000 UK - 30044 s/n 41001.0001;
IDE 1005 S UK - 30045 s/n 41001.0001;
IDE 44 EU - 30423 s/n 40911.0001;
IDE 44 UK - 30394 s/n 40916.0001;
IDL 40 DE - 32308 s/n 41001.0001;
IDL 40 EU - 30417 s/n 41001.0001;
IDL 40 FR - 30403 s/n 41001.0001;
IDL 40 S UK - 31956 s/n 41001.0001;
IDL 40 UK - 30393 s/n 41001.0001;
IDL 42 DE - 32309 s/n 40830.0001;
IDL 42 EU - 30419 s/n 40911.0001;
IDL 42 FR - 30404 s/n 40911.0001;
IDL 50 EU.2 - 32006 s/n 40916.0001;
IDL 50 SK.2 - 32221 s/n 41001.0001;
IDL 500 FR - 30014 s/n 40916.0001;
IDL 505 S UK.2 - 32001 s/n 41001.0001;

IDL 51 (EU) - 31075 s/n 40906.0001;
IDL 51 EU.2 - 32217 s/n 40906.0001;
IDL 55 (DE) - 30561 s/n 40909.0001;
IDL 55 (EU) - 30634 s/n 40916.0001;
IDL 55 (IT) - 30212 s/n 40916.0001;
IDL 55 DE.2 - 32220 s/n 40909.0001;
IDL 55 EU.2 - 32215 s/n 40917.0001;
IDL 55 S (DE) - 30565 s/n 40909.0001;
IDL 55 S (IT) - 30213 s/n 40916.0001;
IDL 55 S DE.2 - 32224 s/n 40909.0001;
IDL 57 (PT) - 31086 s/n 40916.0001;
IDL 60 (EU) - 30644 s/n 40909.0001;
IDL 60 (IT) - 30214 s/n 41001.0001;
IDL 60 EU.2 - 32216 s/n 40909.0001;
IDL 60 NL.2 - 32219 s/n 41001.0001;
IDL 60 S (EU) - 30647 s/n 40909.0001;
IDL 60 S EU.2 - 32225 s/n 40909.0001;
IDL 60 SK - 30755 s/n 41001.0001;
IDL 60 SK.2 - 32222 s/n 41001.0001;
IDL 61 (EU) - 30680 s/n 41001.0001;
IDL 61 EU.2 - 32218 s/n 41001.0001;
IDL 62 (EU) - 30686 s/n 40911.0001;
IDL 62 EU.2 - 32223 s/n 40911.0001;
IDL 63 S NL.2 - 32226 s/n 41001.0001;
IDL 70 (EU) - 30654 s/n 40902.0001;
IDL 70 (IT) - 30215 s/n 41001.0001;
IDL 70 D EU - 30600 s/n 41001.0001;
IDL 700 FR - 30016 s/n 41001.0001;
IDL 700 UK - 30042 s/n 41001.0001;
IDL 7021 (SP) - 30603 s/n 40902.0001;
IDL 710 FR - 30017 s/n 41001.0001;
IDL 75 (EU) - 30661 s/n 41001.0001;
IDL 75 EU.2 - 32627 s/n 41001.0001;
IDL 75 S (EU) - 30604 s/n 41001.0001;
IDL 75 S EU.2 - 32845 s/n 41001.0001;
IDL B2 EU - 32271 s/n 40917.0001;
IDL 500 UK.2 - 31984 s/n 40524.0001 ;
IDL 50 EU - 30217 s/n 40531.0001;
IDL 550 FR - 30015 s/n 40531.0001;
IDL 705 SUK - 30043 s/n 40531.0001;
L 6047 FR - 33150 s/n 40830.0001;
L 61 (IT) - 28169 s/n 40917.0001;
L 61 AG - 29907 s/n 40917.0001;
L 61 EU - 28470 s/n 40917.0001;
L 63 (IT) - 28453 s/n 41001.0001;
L 63 AUS - 29912 s/n 41001.0001;
L 63 EU - 29544 s/n 40909.0001;
L 63 SK - 31080 s/n 41001.0001;
L 63 SK.2 - 32227 s/n 41001.0001;
L 63 X (IT) - 28904 s/n 41001.0001;
L 63 X AUS - 29913 s/n 41001.0001;
L 64 AUS - 29914 s/n 41001.0001;
L 64 X AUS - 29915 s/n 41001.0001;
LD 85 (IT) - 28454 s/n 41001.0001;
LD 85 X (IT) - 28457 s/n 41001.0001;
LD 87 (IT) - 28455 s/n 41001.0001;
LD 87 EU - 28473 s/n 41001.0001;

LD 87 FR - 29285 s/n 41001.0001;
LD 87 X (IT) - 28458 s/n 41001.0001;
LD 87 X AUS - 29918 s/n 41001.0001;
LD 87 X EU - 28474 s/n 41001.0001;
LD 87 X SK - 29692 s/n 41001.0001;
LI 420 - 30392 s/n 40830.0001;
LI 460 - 30370 s/n 40830.0001;
LI 480 A - 30371 s/n 40830.0001;
LI 660 A - 30304 s/n 40830.0001;
LI 700 DUO - 29515 s/n 40830.0001;
LI 620 - 29511 s/n 40714.0001;
LI 640 A - 29512 s/n 40531.0001;
LI 670 DUO - 29513 s/n 40603.0001;
LI 680 DUO - 29514 s/n 40607.0001;
LIQ 700 DUO JADE - 29952 s/n 40830.0001;
LL 40 EU - 30408 s/n 41001.0001;
LL 42 EU - 30411 s/n 40907.0001;
LL 420 FR - 30397 s/n 40907.0001;
LL 43 S EU - 30412 s/n 40907.0001;
LL 62 FR - 30614 s/n 41001.0001;
LL 62 X FR - 30615 s/n 41001.0001;
LL 63 EU - 29909 s/n 41001.0001;
LL 63 FR - 28460 s/n 41001.0001;
LL 63 TK - 28471 s/n 41001.0001;
LL 63 X EU - 30174 s/n 41001.0001;
LL 64 X AUS - 29917 s/n 41001.0001;
LL 64 77 - 31940 s/n 41001.0001;
LL 64 AG - 29908 s/n 40920.0001;
LL 64 AUS - 29916 s/n 41001.0001;
LL 64 DE - 31941 s/n 41001.0001;
LL 64 EU - 29545 s/n 41001.0001;
LL 64 SK - 29690 s/n 41001.0001;
LL 64 X EU - 29546 s/n 41001.0001;
LL 65 (IT) - 28903 s/n 41001.0001;
LL 65 EU - 29547 s/n 40906.0001;
LL 65 FR - 28462 s/n 41001.0001;
LL 65 TK - 28472 s/n 41001.0001;
LL 65 X EU - 29910 s/n 40906.0001;
LL 65 X FR - 29284 s/n 41001.0001;
LL 6546 FR - 33151 s/n 40916.0001;
LV 460 A BK - 30379 s/n 40830.0001;
LV 460 A IX - 30377 s/n 40830.0001;
LV 460 A WH - 30378 s/n 40830.0001;
LV 460 BK - 30375 s/n 40920.0001;
LV 460 IX - 30372 s/n 40920.0001;
LV 460 WH - 30373 s/n 40920.0001;
LV 620 BK - 29939 s/n 41001.0001;
LV 620 IX - 29941 s/n 41001.0001;
LV 620 WH - 29940 s/n 41001.0001;
LV 640 A BK - 29942 s/n 40902.0001;
LV 640 A IX - 29946 s/n 40902.0001;
LV 640 A R AN - 29944 s/n 40902.0001;
LV 640 A R OW - 29945 s/n 40902.0001;
LV 640 A WH - 29943 s/n 40902.0001;
LV 650 A ALU - 29922 s/n 41001.0001;
LV 650 A BK - 29925 s/n 41001.0001;
LV 650 A IX - 29921 s/n 41001.0001;

LV 650 A OW - 29923 s/n 41001.0001;
LV 650 A WH - 29924 s/n 41001.0001;
LV 660 A BK FR - 30300 s/n 40902.0001;
LV 660 A IX FR - 30301 s/n 40902.0001;
LV 660 A WH FR - 30299 s/n 40902.0001;
LV 670 DUO ALU - 29926 s/n 41001.0001;
LV 670 DUO AN - 29947 s/n 41001.0001;
LV 670 DUO IX - 29948 s/n 41001.0001;
LV 670 R AN - 30302 s/n 40830.0001;
LV 670 R OW - 30303 s/n 40830.0001;
LV 680 DUO IX - 29949 s/n 41001.0001;
LVI 12-44 AN - 29564 s/n 40830.0001;
LVI 12-44 IX - 29562 s/n 40830.0001;
LVI 12-44 WH - 29563 s/n 40830.0001;
LVI 12-55 AN - 29567 s/n 41001.0001;
LVI 12-55 IX - 29565 s/n 41001.0001;
LVI 12-55 WH - 29566 s/n 41001.0001;
LVI 12-66 AN - 29570 s/n 41001.0001;
LVI 12-66 IX - 29568 s/n 41001.0001;
LVI 12-66 M BA - 29573 s/n 41001.0001;
LVI 12-66 M GI - 29571 s/n 41001.0001;
LVI 12-66 M VA - 29572 s/n 41001.0001;
LVI 12-66 WH - 29569 s/n 41001.0001;
LVO 670 DUO IX - 30848 s/n 40830.0001;
LVO 680 DUO IX - 29951 s/n 40902.0001;
LVR 640 A AN - 33614 s/n 40902.0001;
LVR 640 A OW - 33615 s/n 40902.0001;
LVR 670 AN - 33616 s/n 40830.0001;
LVR 670 OW - 33617 s/n 40830.0001;
LVTI 12-55 - 29574 s/n 41001.0001;
LVTI 12-66 - 29575 s/n 41001.0001;
SDW 60 P - 31010 s/n 40906.0001;
XLV 670 DUO IX - 29950 s/n 41001.0001.



n1045127: New airbreak - solution of water spurts leaking from base LVS 60 CM

From serial number 50930.0001, to solve the problem of water spurts emitted from the lower right and left side of the door the following modifications were introduced in production:

- 1-Airbreak without insert to allow the necessary pressure venting
- 2-Honeycomb top panel to protect the kitchen unit from any steam emitted (only on built-under models)
- 3-Tank seal length increased by 3 cm to improve water tightness
- 4-Die-cut roof sound-deadening panel
- 5-Three clips for correct fixing of the tank base seal (in production from serial number 50701.0001)

New parts:

- C00141308 - Airbreak
- C00141310 - Honeycomb top panel (built-under versions only)
- C00141317 - Tank seal
- C00141314 - Roof sound-deadening panel
- C00140679 - Tank base seal fixing clip

Premodification parts

- C00110610 - Airbreak
- C00116110 - Tank seal
- C00097300 - Roof sound-deadening panel

1) AIRBREAK REPLACEMENT

It is mandatory to use the new part; in the event of replacement with premodification appliances proceed as follows:

- replace the airbreak with the new part C00141308
- if present, refit the roof sound-deadening panel after cutting out a 10x10 cm square from the rear left-hand corner
- on the built-under version, fit honeycomb panel C00141310 on the top of the appliance
- replace tank seal with the new seal P/N C00141317

WARNING: when replacing an airbreak without a litre-counter turbine use exclusively the same type of part (P/N C00094174 - all the relevant details are given in bulletin n1045085)

2) CHANGING THE TANK SEAL

On appliances with serial number from 40101.0001 to 50930.0001, you can use the new tank seal P/N C00141317 after cutting 1.5 cm off each end.

n1045133: New thermoprotected drain pump in parallel with wash electric pump

The drain pump electrical connection has been modified from a configuration in series with the wash electric pump to one in parallel.

The drain pump in series with the wash electric pump is fed through the wash electric pump causing a voltage drop equal to -15V (diagram N1045133-134FIG1).

The drain pump in series with the wash electric pump is electrically fed directly by the F-N line, without any voltage drop (diagram N1045133-134FIG1).

New parts:

Wiring in parallel

- C00118767(Rohs 143766) - thermoprotected drain pump 220/240V 50HZ 26W - picture (N1045133-134FIG3)

Premodification parts:

Wiring in series

C00112306(Rohs 143739) - drain pump 230V 50HZ 22W - picture (N1045133-134FIG4)

The codes of the new and premodification wirings are given in note N1045129.

Important!!

The thermoprotected drain pump cannot be installed on premodification dishwashers.

The non-thermoprotected drain pump cannot be installed on modified dishwashers.

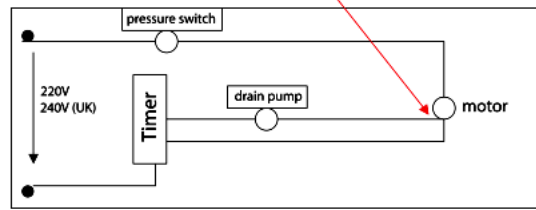
Models/serial nos. affected by modification:

cc29511 - s/n 60316.0001 - LI620
cc29930 - s/n 60323.0001 - DI6
cc29931 - s/n 60320.0001 - DI620
cc29943 - s/n 60401.0001 - LV640AWH
cc30300 - s/n 60401.0001 - LV660ABKFR
cc30301 - s/n 60401.0001 - LV660AIXFR
cc32006 - s/n 60305.0001 - IDL50EU.2
cc32215 - s/n 60306.0001 - IDL55EU.2
cc32220 - s/n 60306.0001 - IDL55DE.2
cc32221 - s/n 60307.0001 - IDL50SK.2
cc32224 - s/n 60401.0001 - IDL55SDE.2
cc32271 - s/n 60322.0001 - IDLB2EU
cc33223 - s/n 60222.0001 - DVG622IX
cc33614 - s/n 60401.0001 - LVR640AAN
cc34119 - s/n 60307.0001 - IDL55IT.2
cc34120 - s/n 60309.0001 - IDL55SIT.2
cc34457 - s/n 60222.0001 - IDL502FR.2
cc34458 - s/n 60306.0001 - IDL552FR.2
cc34499 - s/n 60222.0001 - IDL50SEU.2
cc34518 - s/n 60222.0001 - L63EU.2
cc34865 - s/n 60222.0001 - IDL500FR.2
cc35314 - s/n 60306.0001 - IDL57PT.2
cc36154 - s/n 60306.0001 - IDL553FR.2
cc39329 - s/n 60222.0001 - IDL506FR.2
cc39330 - s/n 60306.0001 - IDL556FR.2
cc39331 - s/n 60306.0001 - IDL556SFR.2
cc40041 - s/n 60414.0001 - IDL42EU.C
cc40220 - s/n 60430.0001 - IDL42FR.C
cc30299 - s/n 60418.0001 - LV660AWHFR
cc29939 - s/n 60421.0001 - LV620BK
cc29940 - s/n 60421.0001 - LV620WH
cc29941 - s/n 60421.0001 - LV620IX
cc29946 - s/n 60422.0001 - LV640AIX
cc29942 - s/n 60424.0001 - LV640ABK
cc29512 - s/n 60501.0001 - LI640A
cc33942 - s/n 60501.0001 - LI641A
cc40916 - s/n 60502.0001 - L6064EU
cc40911 - s/n 60502.0001 - L6061EU
cc37341 - s/n 60502.0001 - L62IT.2
cc35316 - s/n 60502.0001 - L61EU.2
cc29907 - s/n 60502.0001 - L61AG
cc34283 - s/n 60529.0001 - IDL52EU.2
cc41049 - s/n 60605.0001 - L65IT
cc23510 - s/n 70618.0001 - D61EX50-60
cc29912 - s/n 70320.0001 - L63AUS
cc29913 - s/n 70326.0001 - L63XAUS
cc29921 - s/n 70318.0001 - LV650AIX
cc29922 - s/n 70227.0001 - LV650AALU

cc29923 - s/n 70329.0001 - LV650AOW
cc29924 - s/n 70227.0001 - LV650AWH
cc29925 - s/n 70227.0001 - LV650ABK
cc30304 - s/n 70326.0001 - LI660A
cc30369 - s/n 70323.0001 - DI630A
cc32217 - s/n 70326.0001 - IDL51EU.2
cc33229 - s/n 70326.0001 - DVG652AIX
cc33616 - s/n 70326.0001 - LVR670AN
cc33617 - s/n 70326.0001 - LVR670OW
cc33751 - s/n 70326.0001 - LVX12-45IX
cc33944 - s/n 70329.0001 - LI661A
cc34502 - s/n 70326.0001 - IDL60SAUS.2
cc34519 - s/n 70115.0001 - IDTMEU
cc37546 - s/n 70326.0001 - L6049FR
cc40887 - s/n 70319.0001 - IDL600EU.2
cc40888 - s/n 70319.0001 - IDL600SEU.2
cc40889 - s/n 70129.0001 - IDL750SEU.2
cc40891 - s/n 70122.0001 - IDL750EU.2
cc41165 - s/n 70327.0001 - IDL63EU.2
cc41166 - s/n 70319.0001 - IDL6021EU.2
cc41203 - s/n 70326.0001 - IDL550SIT.2
cc41204 - s/n 70326.0001 - IDL600IT.2
cc41205 - s/n 70326.0001 - IDL600SIT.2
cc42061 - s/n 70326.0001 - DI623A
cc42062 - s/n 70301.0001 - DI650A
cc42063 - s/n 70326.0001 - DVG623BK
cc42065 - s/n 70325.0001 - DVG623WH
cc42242 - s/n 70326.0001 - IDL6049SK.2
cc43218 - s/n 70301.0001 - DI653A
cc43942 - s/n 70326.0001 - DVG623BK
cc43944 - s/n 70326.0001 - DVG623WH
cc47650 - s/n 70326.0001 - L64AUS
cc47651 - s/n 70326.0001 - L64XAUS
cc39332 - s/n 70301.0001 - IDL706FR.2
cc34459 - s/n 60306.0001 - IDL555SFR.2
cc32227 - s/n 60222.0001 - L63SK.2
cc33212 - s/n 60222.0001 - DVG621IX

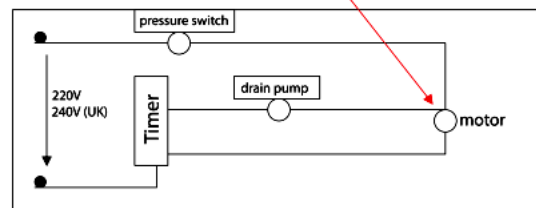
N1045133/134FIG1

Drying pump connected electrically in series to the motor washing



N1045133/134FIG2

Drying pump connected electrically in parallel to the motor washing



N1045133-134FIG3

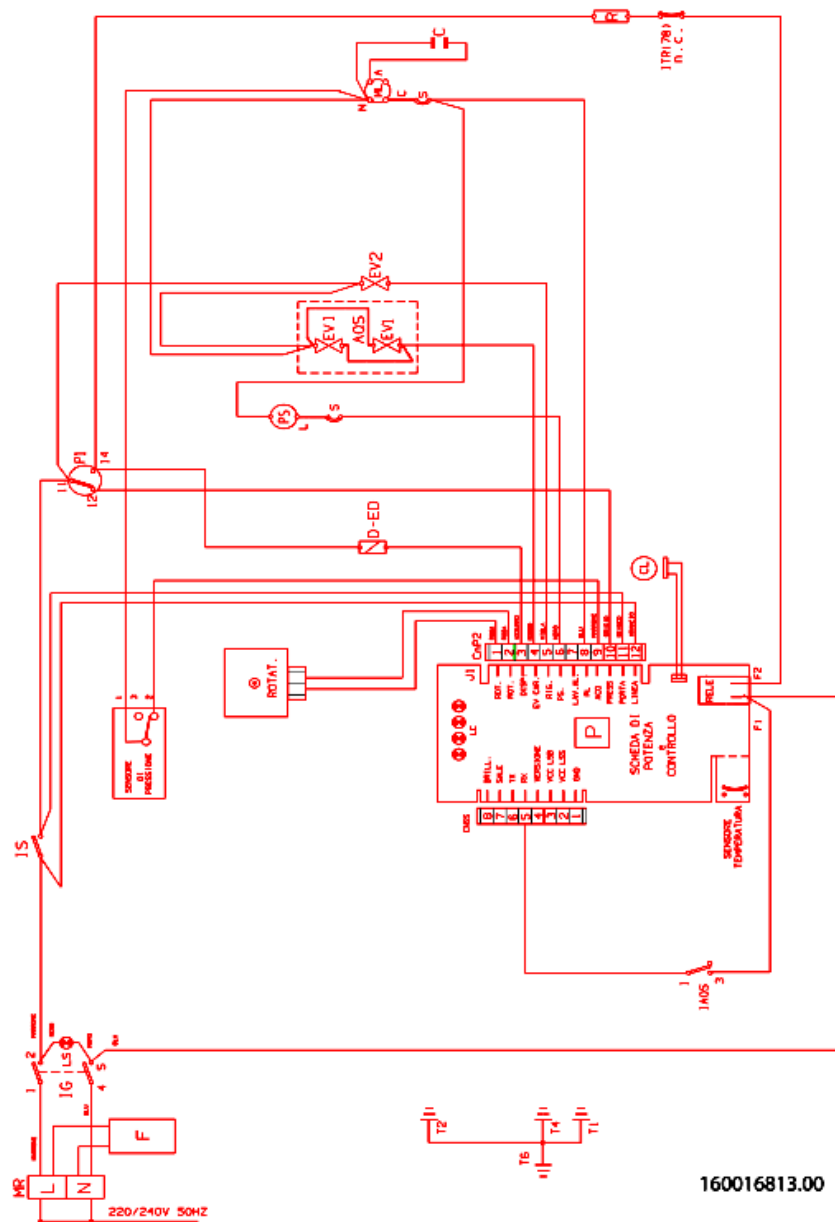


N1045133-134FIG4



Electric schemes and links

Cod. 16001681300



160016813.00

Legend

Legend: 16001681300

A..	Timer contact	LPA	Door open
AQS	Aquastop electrovalve	LPR	Prewash LED
B..	Timer contact	LRI	Rinse LED
C	Condensor	LS	Mains LED -Pilot lampe On/Off
C..	Timer contact	LSB	Polisher LED
CL	Slow cam	LSC	Cycle ranning lamp
CM	Wash pump motor connector	LSE	Acquastop LED
CN	Connector	LSS	Salt LED
CV	Fast cam	LV	Fan off lamp
D-ED	Dispenser - Electric dosing device	M	Terminal box
D..	Timer contact	MB	Polisher dip-switch
DB	Brightener dispenser	ME	Acquastop dip-switch
DD	Display - Detergent dispenser	ML	Wash motor
E1	Cold water electrovalve	MM	Handle dip-switch
E2	Regeneration electrovalve	MP	Door dip-switch
E3	Hot water electrovalve	MR	Delay-timer motor - Terminal board
ECO	Saving switch	MT	Timer motor
ED	Detergent/Brightener dispenser	MTR	Fast forward timer motor
EV1	Cold water electrovalve MM- Handle dip-switch	MV	Motor fan
EV1/2	Half-load electrovalve	P	Pressure switch
EV2	Regeneration electrovalve	P..	Pressure switch contact
EV3	Hot water electrovalve	P1	Stage 1 pressure
EVC	Hot water electrovalve	P2	Stage 2 pressure switch
EVF	Cold water electrovalve	PAP	High pressure switch
EVR	Regeneration water electrovalve	PO	Overflow pressure switch
F	Anti-interference filter ML- Wash motor	PS	Drain pump
FA	Radio interferences	PULS	Push-button panel
I1	On/Off switch - Plus cycle switch -IEC cycle	R	Heating element
I1/2	Switch half-load	R.D.	Delay rotary selector
I2	Fast switch -IEC cycle switch (standard) -	RA	Heating element drying
I2H	2-hour delay switch	ROT D	Delay rotary selector
I3	Saving switch- Switch for cycle with no pre-	ROT.	Rotary selector
I4	Switch for cycle fresh dirty	S	Motor overload cutout

I4H	4-hour delay switch	SC	Selector cycli
I5-ICR	Fast cycle switch	SS	Salt detector
I6	Soak cycle switch	ST	START
I6H	6-hour delay switch	T..	Delay-tymer contact
IAQS	Aquastop switch	T1	Power supply earth cable -Thermostat 45°C
ID	Switch display	T2	Lid earth -Thermostat 55°C
IE	Saving switch	T3	Timer earth -Thermostat 65°C
IEXD	Exstra dray switch	T36	36°C N.O. Thermostat
IG	Main switch	T4	Heating element earth
IMV	Off motor fan switch	T46	46°C N.O. Thermostat
IP	High temperature switch	T5	Drain pump earth
IS	Cut-off switch	T57	57°C N.O. Thermostat
ISB	Polisher led switch	T6	Wash motor earth
ISS	Salt LED switch	T8	External lid earth
ITR	Heating element switch	TE	Relay switch
L	Mains LED	THP	Thermoprotector
L1	Cycle 1 lamp	TM	Timer
L1/2	Lamp cycle half-load	TS	Safety thermostat
L2	Cycle 2 lamp	TS 40	Thermostat 40 °C
L3	Cycle 3 lamp	TS 50	Thermostat 50 °C
L4	Cycle 4 lamp	TS 62	Thermostat 62 °C
L5	Cycle 5 lamp	TS1	Min. temperature thermostat
L6	Cycle 6 lamp	TS2	Max. temperature thermostat
LA	Drying LED	TT	Terminal box support earth
LAQ	Aquastop on lamp	Tcp	nner-door earthing connection
LC	Cycle ranning lamp	Tfa	Radio interference
LD	Delay activated lamp	Tml	Pump wash motor earthing connection
LE	Saving cycle	Tpg	Large door earthing connection
LH2	2-hour delay lamp	Tpi	Inspection door earthing connection
LH4	4-hour delay lamp	Tpr	Pressure switch
LH6	6-hour delay lamp	Tps	Discharge pump earthing connection
LL	Wash LED	Tr	Heating element
LP	High temperature LED	Tte	Delay-timer earthing connection