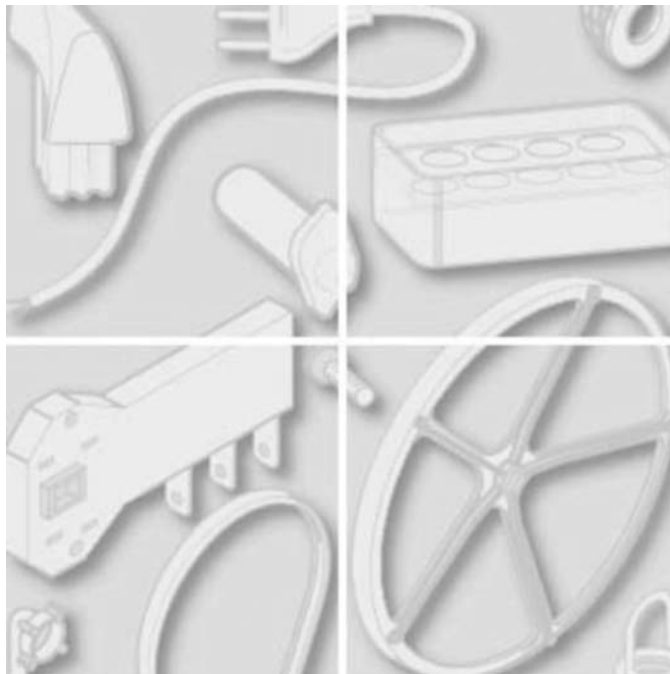


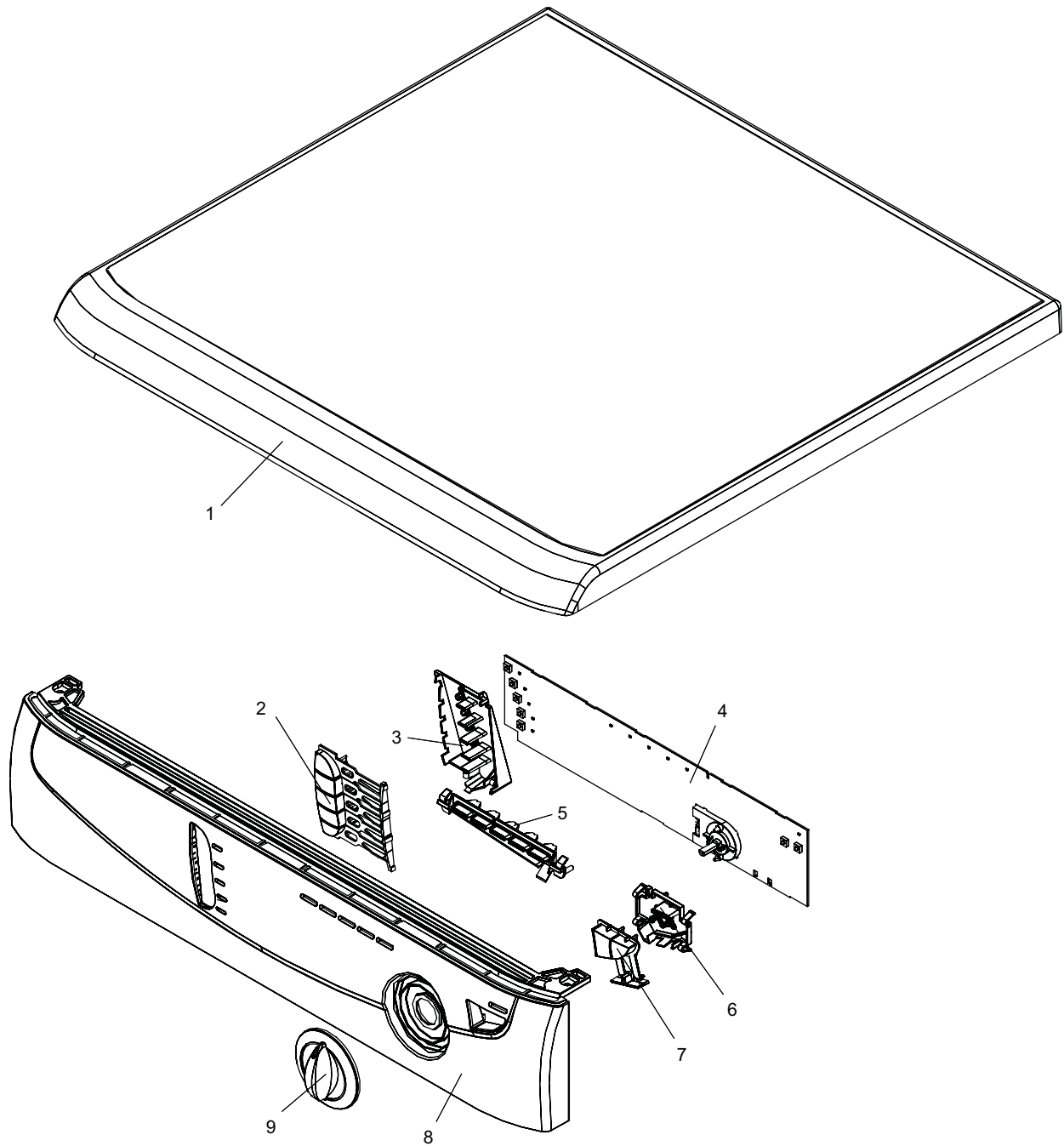


ARISTON

REPAIR PART DIAGRAMS

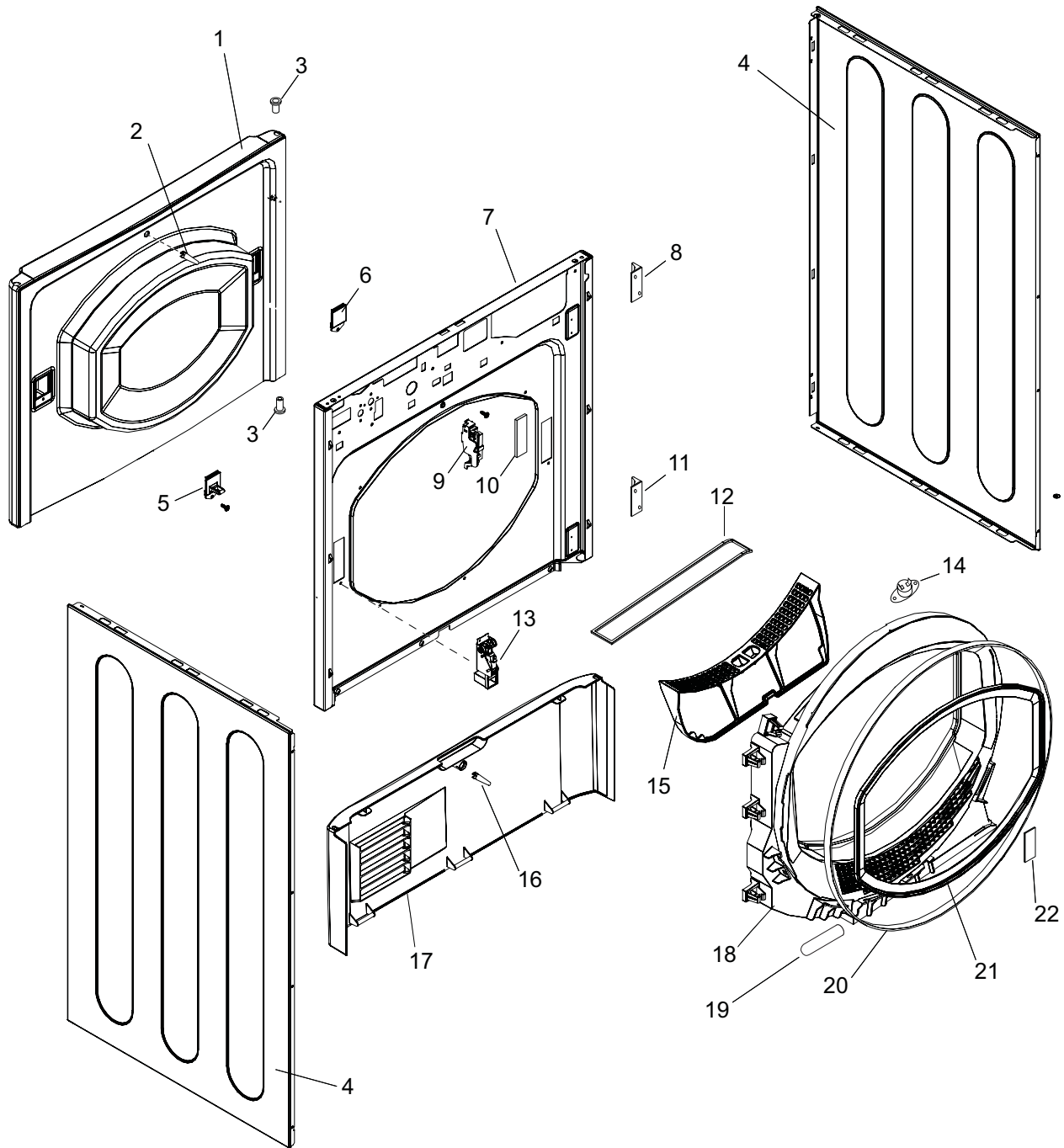


PRODUCT: DRYER
MODEL: ASL75CXS NA

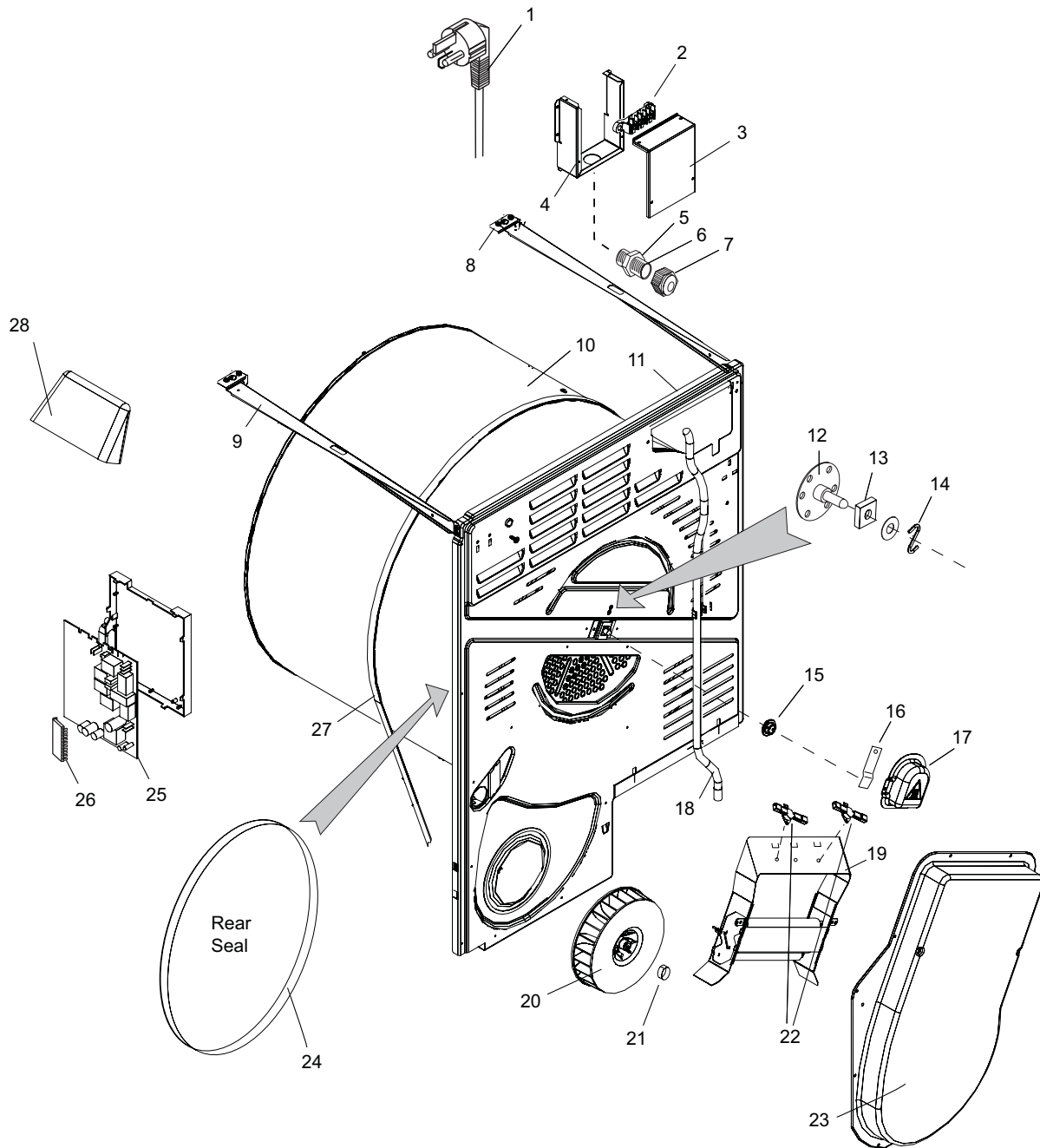


Stacking Kit 142830

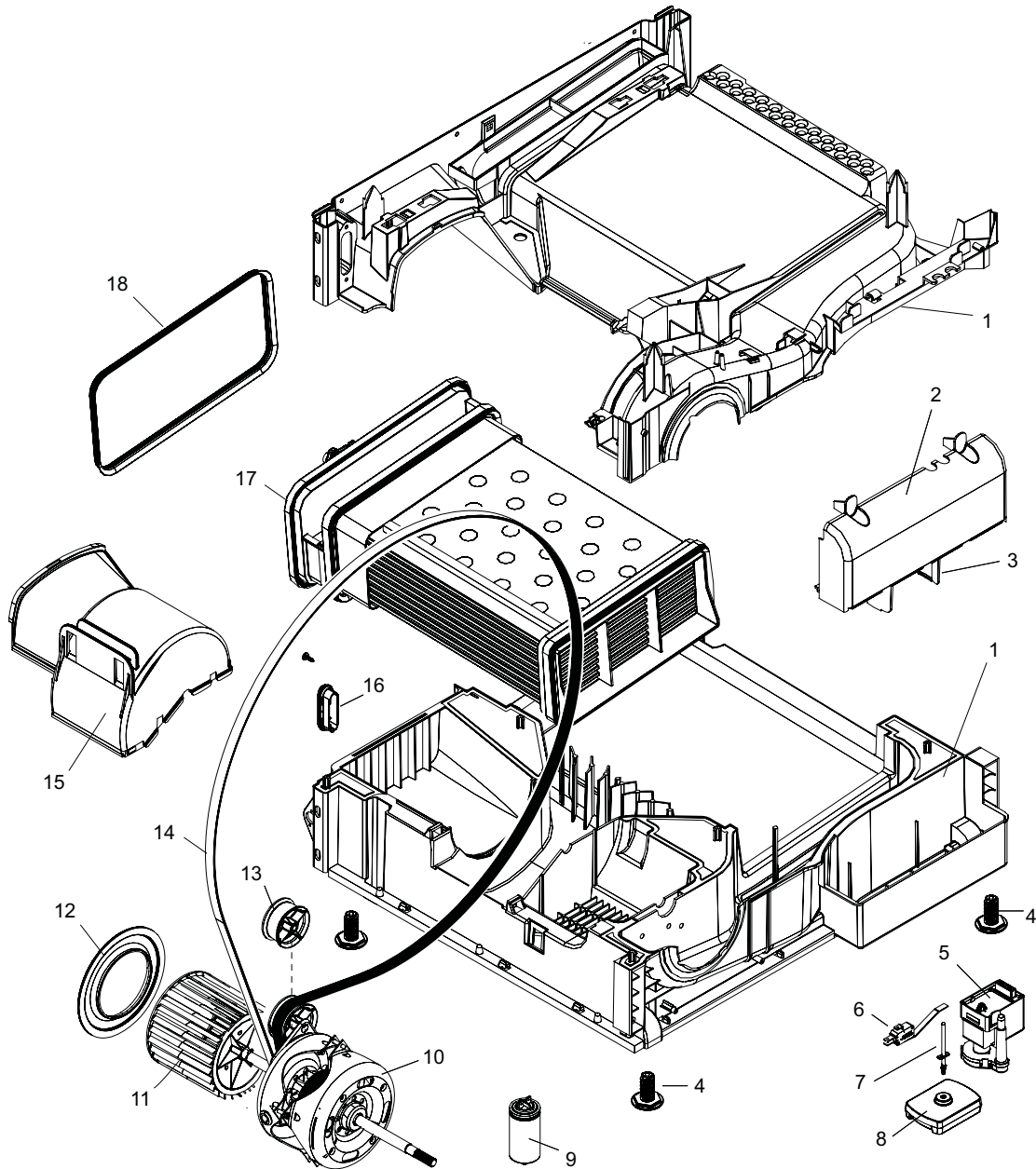
Item	Part #	Description	Item	Part #	Description
1	142755	Top Panel, Platinum	6	142757	Light Guide, On / Off
2	142493	Button Assembly, Platinum	7	142492	On / Off Button, Platinum
3	142700	Light Guide, Function	8	142752	Control Panel, Platinum
4	113983	Program Board	9	142754	Control Knob, Platinum
5	142758	Light Guide, Cycle			



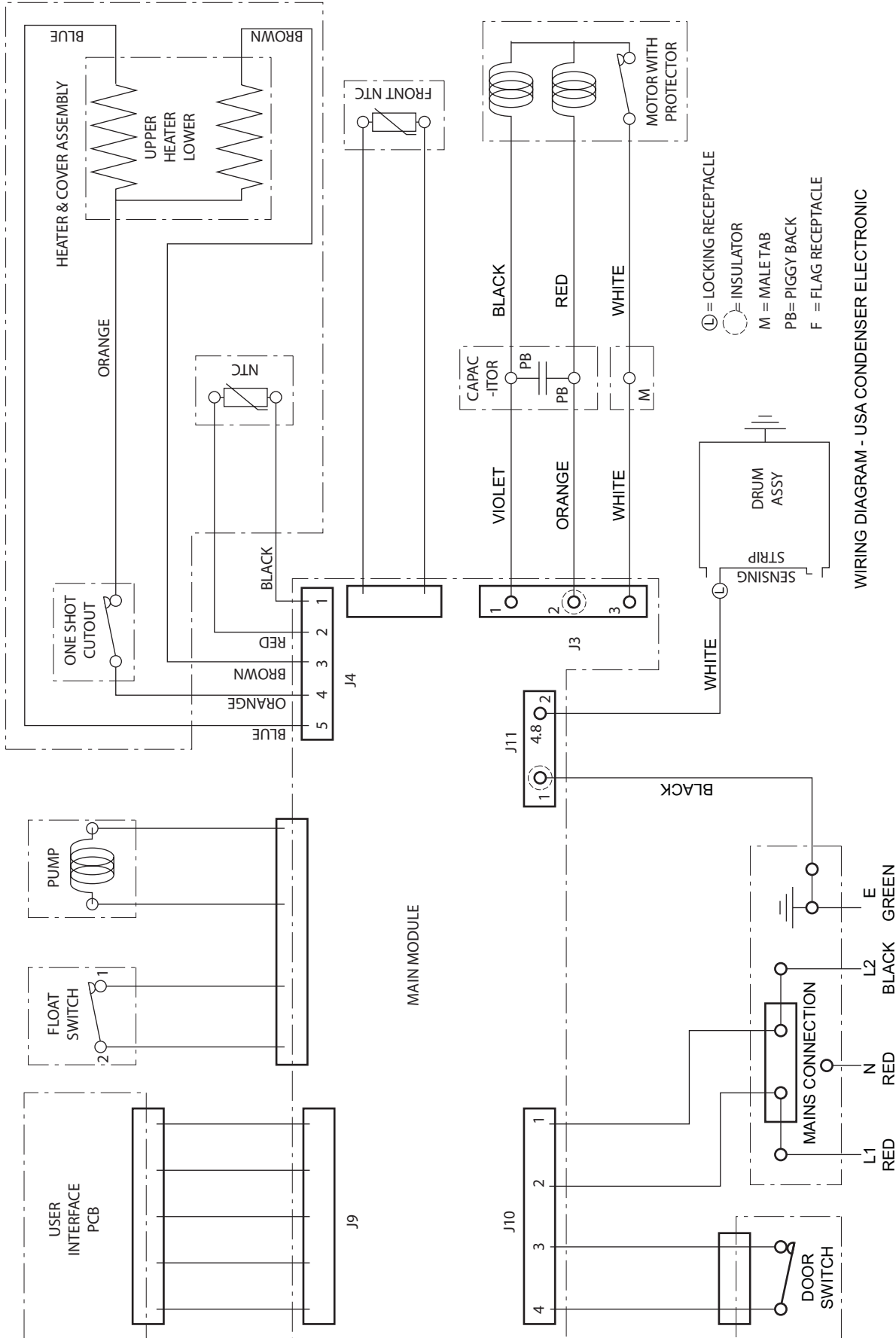
Item	Part #	Description	Item	Part #	Description
1	142767	Door Panel, Platinum	12	142773	Seal, Air Duct
2	113847	Plunger	13	098235	Door Latch
3	095516	Bushing	14	142702	Thermostat
4	142772	Side Panel, Platinum	15	113848	Filter
5	119841	Door Latch	16	115798	Latch, Toe Kick
6	095515	Cover, Door Latch	17	142768	Lower Panel, Platinum
7	142769	Front Panel, Platinum	18	142771	Front Air Duct
8	113851	Upper, Door Hinge	19	141612	Strip, Dryness Sensor
9	142770	Door Switch	20	142613	Seal, Drum Front
10	098255	Blank, Door Latch	21	113853	Door Seal
11	113852	Lower, Door Hinge	22	112144	Bearing Pad



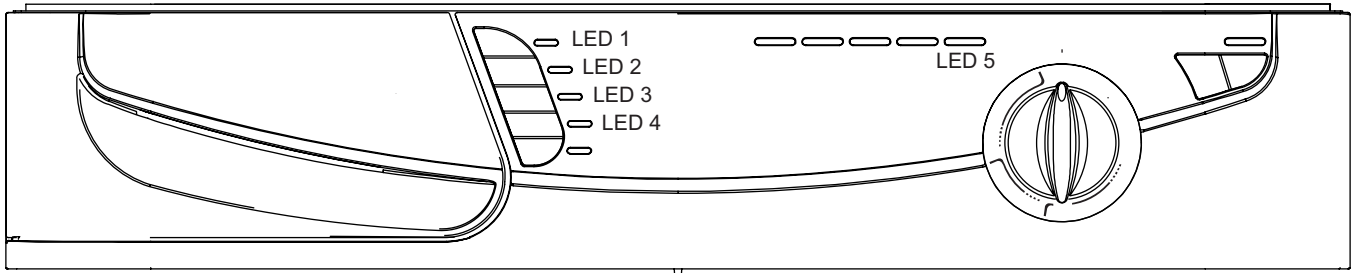
Item	Part #	Description	Item	Part #	Description
1	142680	Main Plug	15	142631	Collar, Drum Shaft
2	142684	Terminal Block	16	095552	Grounding Strip
3	142807	Cover, Terminal Block	17	095553	Bearing Cover
4	142806	Box, Terminal Block	18	142801	Drain Hose
5	142689	Nut, Main Plug	19	142803	Heater Assembly
6	142687	Sleeve, Main Plug	20	142804	Fan, Outer
7	142688	Bushing, Main Plug	21	096476	Clip, Impeller
8	142805	Side Strut, Left	22	142802	Thermostats
9	113902	Side Strut, Right	23	142800	Heater Cover
10	142797	Drum	24	113823	Rear Seal
11	142798	Rear Panel	25	143874	Control Board (must also order 142826)
12	113038	Drum Spacer Kit	26	142826	EEPROM (must also order 143874)
13	142628	Rear Drum Bearing	27	142785	Belt
14	095551	Pin	28	142638	Tumbler



Item	Part #	Description	Item	Part #	Description
1	142774	Base	10	142783	Motor
2	113892	Tank Cover, Horizontal	11	142779	Fan, Inner
3	113893	Tank Cover, Vertical	12	142778	Inlet Ring
4	142775	Foot	13	113879	Jockey Wheel
5	142788	Drain Pump	14	142785	Belt
6	142776	Float Switch	15	142780	Fan Cover
7	142787	Float Pin	16	142794	Cap
8	113883	Float	17	142795	Condensing Unit
9	119849	Motor Capacitor	18	142796	Seal, Condensing Unit Cover



WIRING DIAGRAM - USA CONDENSER ELECTRONIC



FAULT	LED 1	LED 2	LED 3	LED 4	LED 5	FAULT	LED 1	LED 2	LED 3	LED 4	LED 5
F 1	OFF	OFF	OFF	FLASH	OFF	F 10	FLASH	OFF	FLASH	OFF	OFF
F 2	OFF	OFF	FLASH	OFF	OFF	F 11	FLASH	OFF	FLASH	FLASH	OFF
F 3	OFF	OFF	FLASH	FLASH	OFF	F 12	FLASH	FLASH	OFF	OFF	OFF
F 4	OFF	FLASH	OFF	OFF	OFF	F 13	FLASH	FLASH	OFF	FLASH	OFF
F 5	OFF	FLASH	OFF	FLASH	OFF	F 14	FLASH	FLASH	FLASH	OFF	OFF
F 6	OFF	FLASH	FLASH	OFF	OFF	F 15	FLASH	FLASH	FLASH	FLASH	OFF
F 7	OFF	FLASH	FLASH	FLASH	OFF	F 16	OFF	OFF	OFF	OFF	FLASH
F 8	FLASH	OFF	OFF	OFF	OFF	F 17	OFF	OFF	OFF	FLASH	FLASH
F 9	FLASH	OFF	OFF	FLASH	OFF	F 18	OFF	OFF	FLASH	OFF	FLASH

F1. Motor Triac Short

Check Continuity of Motor.
 Check Motor / Control Board Wiring Connections.
 Replace Control Board and EEPROM.
 Or, Replace Motor.

F2. Main Motor

Check Motor Rotation.
 Check Continuity of Motor.
 Check Motor / Control Board Wiring Connections.
 Check Fan Blades for Blockage
 Replace Motor.
 Or, Replace Control Board and EEPROM.

F3. Front NTC Open / Short

Check Wiring Continuity to Control Board.
 Check NTC for 500K ohms, Replace NTC.
 Or, Replace Control Board and EEPROM.

F4. Condensation Pump

Check Condensation Pump for Blockage.
 Check Float.
 Check Wiring Continuity to Control Board.
 Check Voltage to Pump.
 Replace Pump.
 Or, Replace Control Board and EEPROM.

F5. Condensation Pump

Check Condensation Pump for Blockage.
 Check Float.
 Check Wiring Continuity to Control Board.
 Check Voltage to Pump.
 Replace Pump.
 Or, Replace Control Board and EEPROM.

F6. Not Used

F7. Not Used

F8. Heater Relay Shorted

Check Wiring Continuity at Control Board.
 Check Continuity of Heating Element – 48 ohms.

F9. EEPROM Error

Incorrect Version of EEPROM.
 Change EEPROM.

F10. Heating Element Open or High Limit Cut Out

Check Continuity of Heating Element – 48 ohms.
 Check Continuity of High Limit Cut Out.
 Check Wiring Continuity at Control Board.

F11. Condensation Pump

Check Condensation Pump for Blockage.
 Check Float.
 Check Wiring Continuity to Control Board.
 Check Voltage to Pump.
 Replace Pump.
 Or, Replace Control Board and EEPROM.

F12. No Communication Between Display and Control Board

Check Wiring Continuity.
 Voltage Check from Control Board to Display.

F13. Rear NTC Open or Shorted

Check Wiring Continuity to Control Board.
 Check NTC for 500K ohms, Replace NTC.
 Or, Replace Control Board and EEPROM.

F14. Not Used

F15. Heater

Check Wiring Continuity at Control Board.
 Check Continuity of Heating Element – 48 ohms.

F16. Not Used

F17. Control Board Main Relay

Replace Control Board and EEPROM.

F18. Not Used