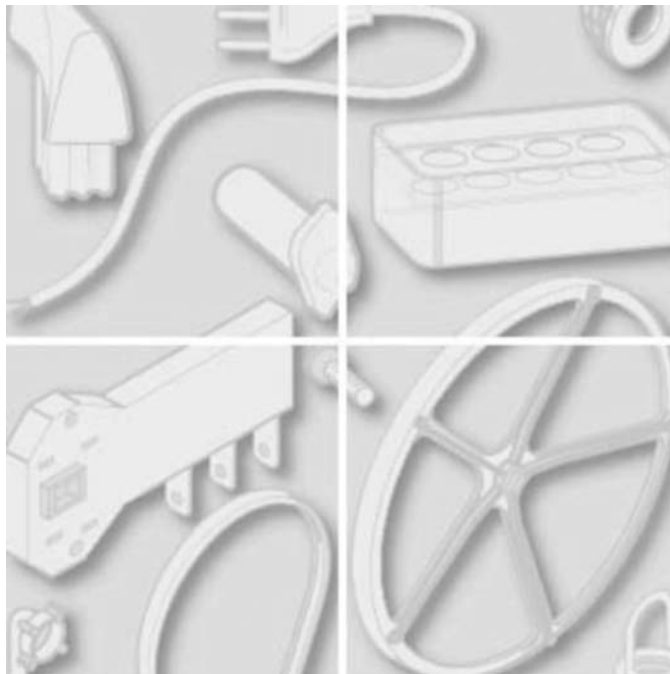




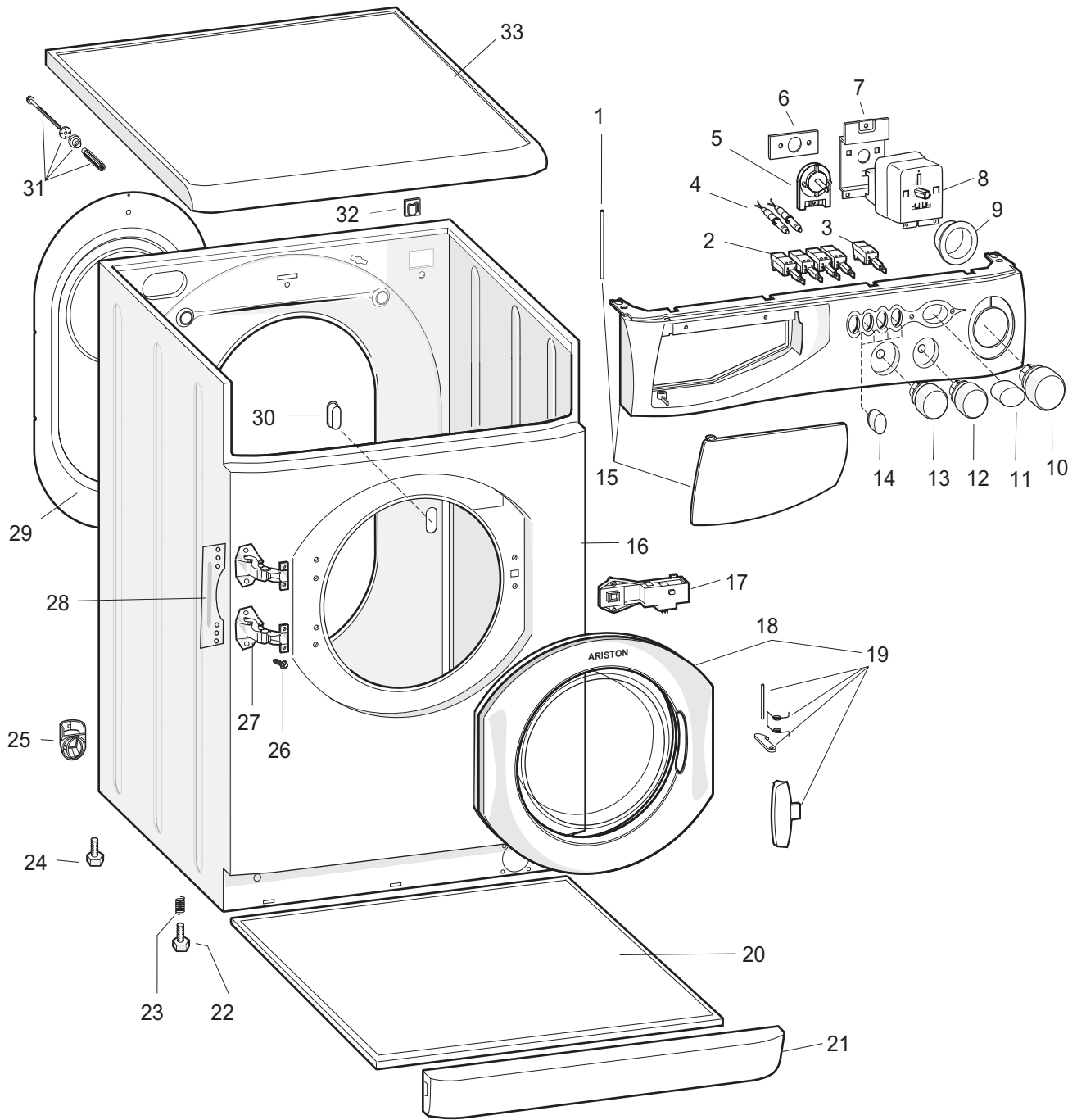
ARISTON

REPAIR PART DIAGRAMS

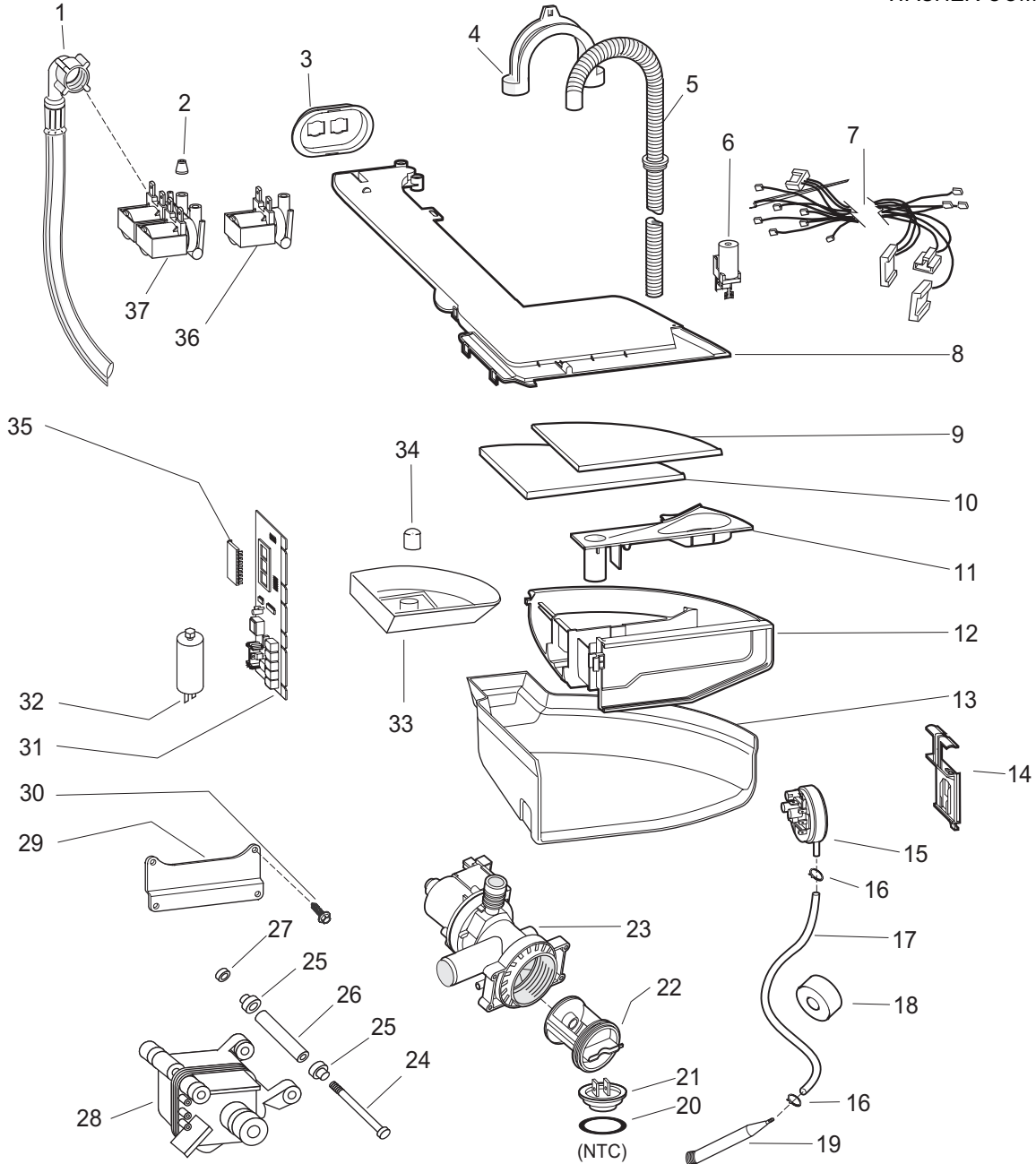


PRODUCT: WASHER

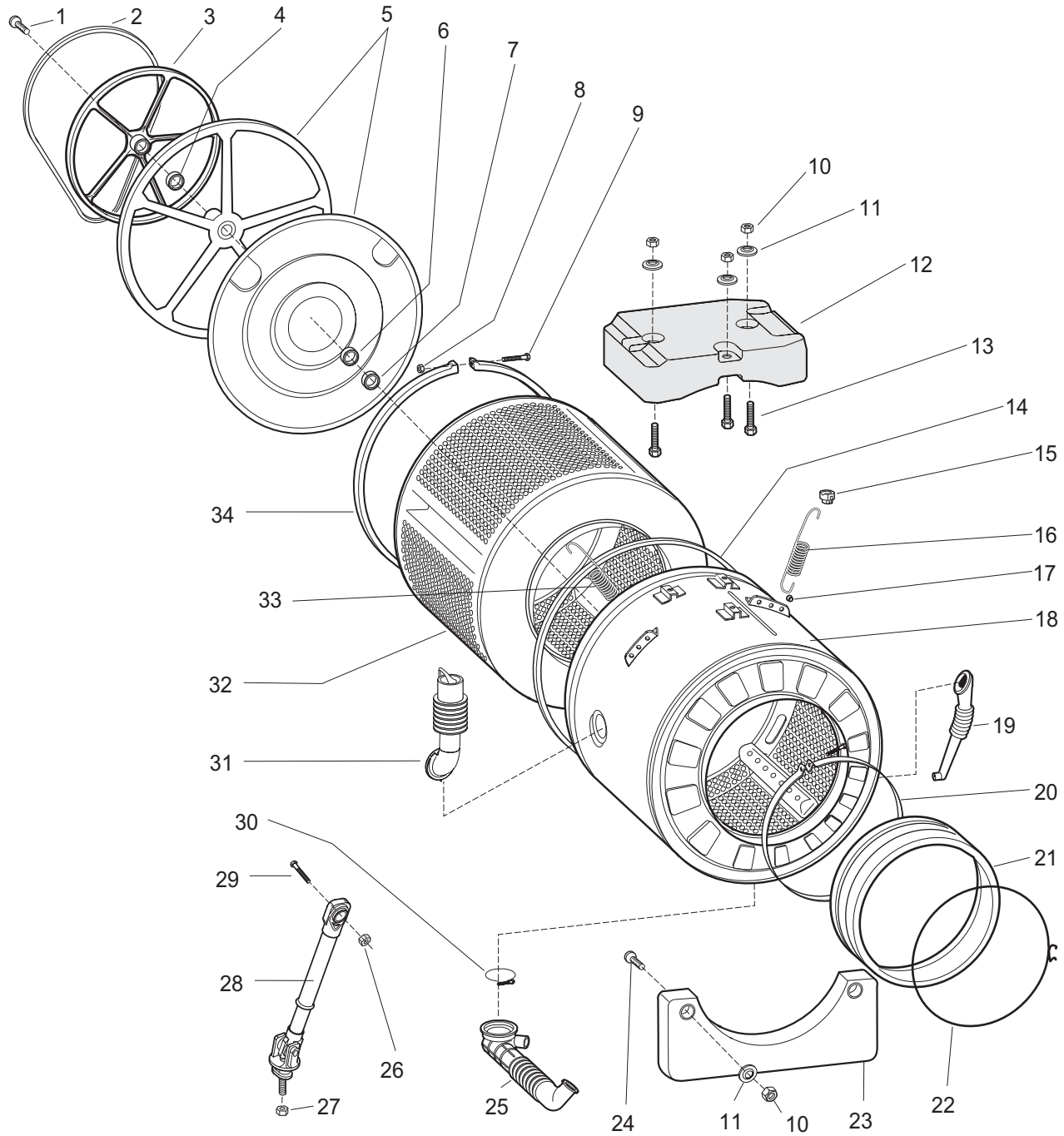
MODEL: AW 120



Item	Part #	Description	Item	Part #	Description
1	065186	Pivot Pin, Dispenser Drawer	18	064540	Door Assy.
2	088394	Selector Switch	19	065250	Door Handle Assy.
3	090218	On / Off Switch	20	098183	Base Plate
4	086663	Indicator Lamp	21	064505	Toe Kick, White
5	085195	Potentiometer, Spin Speed or Water Temp.	22	081702	Front Leveling Leg
6	099627	Mounting Plate, On-Off Switch	23	059869	Spring
7	064784	Bracket, Timer Support	24	081701	Rear Leveling Leg
8	090195	Program Selector	25	046666	Collar, Drain Hose
9	109547	Program Disc	26	074149	Bolt M4X9
10	064506	Wash Timer Knob, White	27	064541	Door Hinge Assy.
11	064509	Button, White	28	064539	Plate, Door Hinge
12	099637	Thermostat Knob, White	29	081698	Rear Cover, White
13	074147	Spin Speed Knob, White	30	084817	Cap
14	064507	Button, White	31	098182	Shipping Bolt Kit
15	109504	Control Panel Assy., White	32	041575	Adhesive Hook
16	099624	Cabinet, White	33	099649	Top Panel, White
17	090199	Door Interlock			

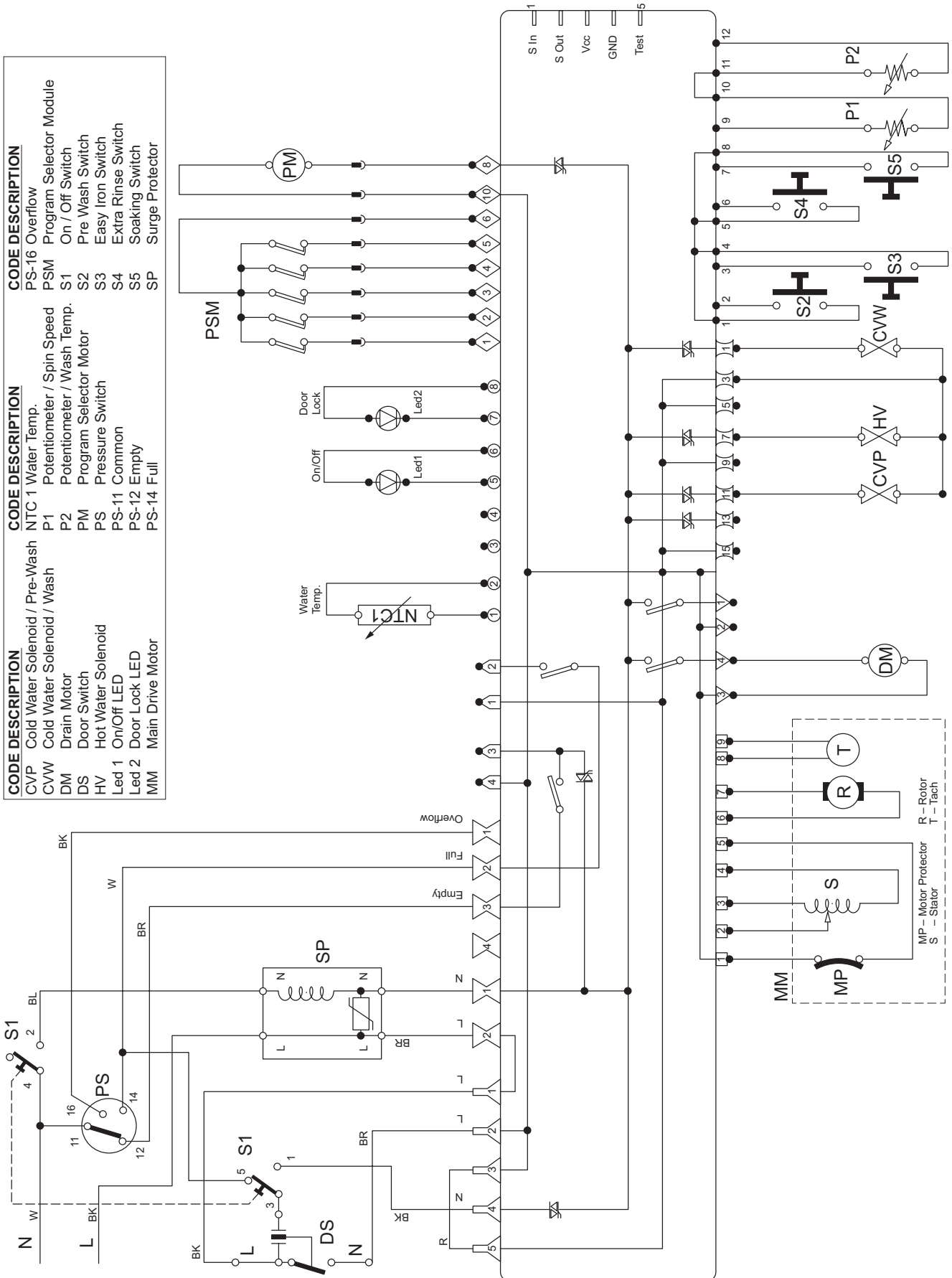


Item	Part #	Description	Item	Part #	Description
1	069227	Inlet Hose	20	085458	Gasket, Temperature Sensor
2	064534	Seal, Water Valve	21	080767	Temperature Sensor (NTC)
3	086586	Support, Water Valve	22	045027	Filter, Drain Pump
4	019902	Support, Drain Hose	23	090207	Drain Pump
5	027466	Drain Hose	24	074152	Bolt M6 X 30
6	090332	Filter, Electronics	25	074151	Rubber Bushing
7	109538	Wire Harness	26	074153	Spacer
8	109514	Dispenser Cover	27	065152	Nut M6
9	109505	Program Guide	28	090196	Main Motor
10	065733	Support, Program Guide	29	081720	Mounting Plate
11	046154	Fabric Softener Cover	30	041611	Screw M8X15
12	046148	Soap Dispenser Drawer	31	090505	Control Board (must also order 109535)
13	092176	Soap Dispenser Housing	32	091054	Surge Protector
14	064537	Support, Pressure Switch	33	046152	Additive Container
15	090200	Pressure Switch	34	046157	Stopper, Detergent Dispenser
16	092412	Hose Clamp	35	109535	EEPROM Program Chip (must also order 090505)
17	041785	Hose, Air Trap	36	099640	Water Valve (hot)
18	019755	Foam Vibration Damper	37	109513	Water Valve, Dual (cold)
19	053409	Air Trap			



Item	Part #	Description	Item	Part #	Description
1	064786	Bolt M8X20	18	095720	Outer Drum
2	082812	Belt	19	081750	Hose, Detergent Recovery
3	066080	Drum Pulley	20	090145	Boot Clamp
4	013563	Bearing	21	081747	Boot
5	082638	Star Wheel	22	064546	Boot Clamping Ring
6	002591	Bearing	23	082326	Front Counterweight
7	035999	Bearing Seal	24	051581	Bolt M8X35
8	055305	Nut, Clamping Band	25	083293	Hose, Tank to Pump
9	055304	Bolt, Clamping Band	26	098723	Nut M8
10	091062	Nut	27	065152	Nut M6X20X1
11	041607	Washer	28	098722	Shock Absorber
12	082325	Upper Counterweight	29	098724	Bolt M8X45
13	052788	Screw M8X55	30	061958	Clamp
14	036066	Tub Gasket, Stainless Steel	31	092161	Hose, Dispenser to Tank
15	064515	Spring Anchor	32	083703	Inner Drum
16	082322	Spring, RH	33	089967	Spring, LH
17	074041	Spring Ring	34	036065	Clamping Band

CODE DESCRIPTION	CODE DESCRIPTION	CODE DESCRIPTION
CVP Cold Water Solenoid / Pre-Wash	NTC 1 Water Temp.	PS-16 Overflow
CVW Cold Water Solenoid / Wash	P1 Potentiometer / Spin Speed	PSM Program Selector Module
DM Drain Motor	P2 Potentiometer / Wash Temp.	S1 On / Off Switch
DS Door Switch	PM Program Selector Motor	S2 Pre Wash Switch
HV Hot Water Solenoid	PS Pressure Switch	S3 Easy Iron Switch
Led 1 On/Off LED	PS-11 Common	S4 Extra Rinse Switch
Led 2 Door Lock LED	PS-12 Empty	S5 Soaking Switch
MM Main Drive Motor	PS-14 Full	SP Surge Protector





FAULT CODES

A repair fault is signaled by the continuous rotating of the Program Knob and the flashing of the Door Locked LED. The Fault Code is determined by counting the sequence of individual flashes of the LED (2 flashes = F2). The LED will flash the Fault Code sequence and then delay for approximately eight (8) seconds, repeating the Fault Code sequence and eight second delay continually.

TECH NOTE: The unit can be turned off without harm and the Fault Code sequence will repeat when power is reapplied.

F1. Triac Short

Replace Control Board.

F2. Main Motor

Check Main Motor connections.
Replace Main Motor.
Or, replace Control Board.

F3. NTC (Water Temp) Open / Short

Check wiring continuity to Control Board.
Replace NTC.
Or, replace Control Board.

F4. Pressure Switch

Check wiring continuity to Control Board.
Replace Pressure Switch.
Or, replace Control Board.

F5. Blocked Drain Motor or Pressure Switch shorted in Empty position

Check Drain Hose.
Check Drain Motor clean out for obstruction.
Check voltage at Drain Motor.
Check Pressure Switch wiring continuity.
Replace Drain Motor / Pressure Switch.
Or, replace Control Board.

F6. Program Selector

Check wiring continuity to Control Board.
Replace Program Selector.
Or, replace Control Board.

F7. Not Used

F8. Pressure Switch Shorted in Full Position

Check Pressure Switch wiring continuity.
Or, replace Pressure Switch.
Or, replace Control Board.

F9. Control Board Error

Incorrect version of Control Board or EEPROM.
Change Control Board and EEPROM.

F10. Pressure Switch Shorted

Check wiring continuity to Control Board.
Replace Pressure Switch.
Or, replace Control Board.

F11. Drain Motor

Check wiring continuity to Control Board.
Check Drain Motor clean out for obstruction.
Voltage check at Drain Motor.
Check Pressure Switch.
Replace Drain Motor.
Or, replace Control Board.

F12. Not Used

F13 - F16 Apply Only to AWD 120

F13. NTC (Dryer Temp) Open / Short

Check wiring continuity to Control Board.
Replace NTC.
Or, replace Control Board.

F14. Dryer Heating Element is Open

Check Dryer Heating Element continuity.
Check wiring from Element to Control Board.
Replace Heating Element.
Or, replace Control Board

F15. Dryer Heating Element Relay Shorted

Check Dryer Heating Element continuity.
Check wiring from Element to Control Board.
Replace Control Unit.

F16. Not Used