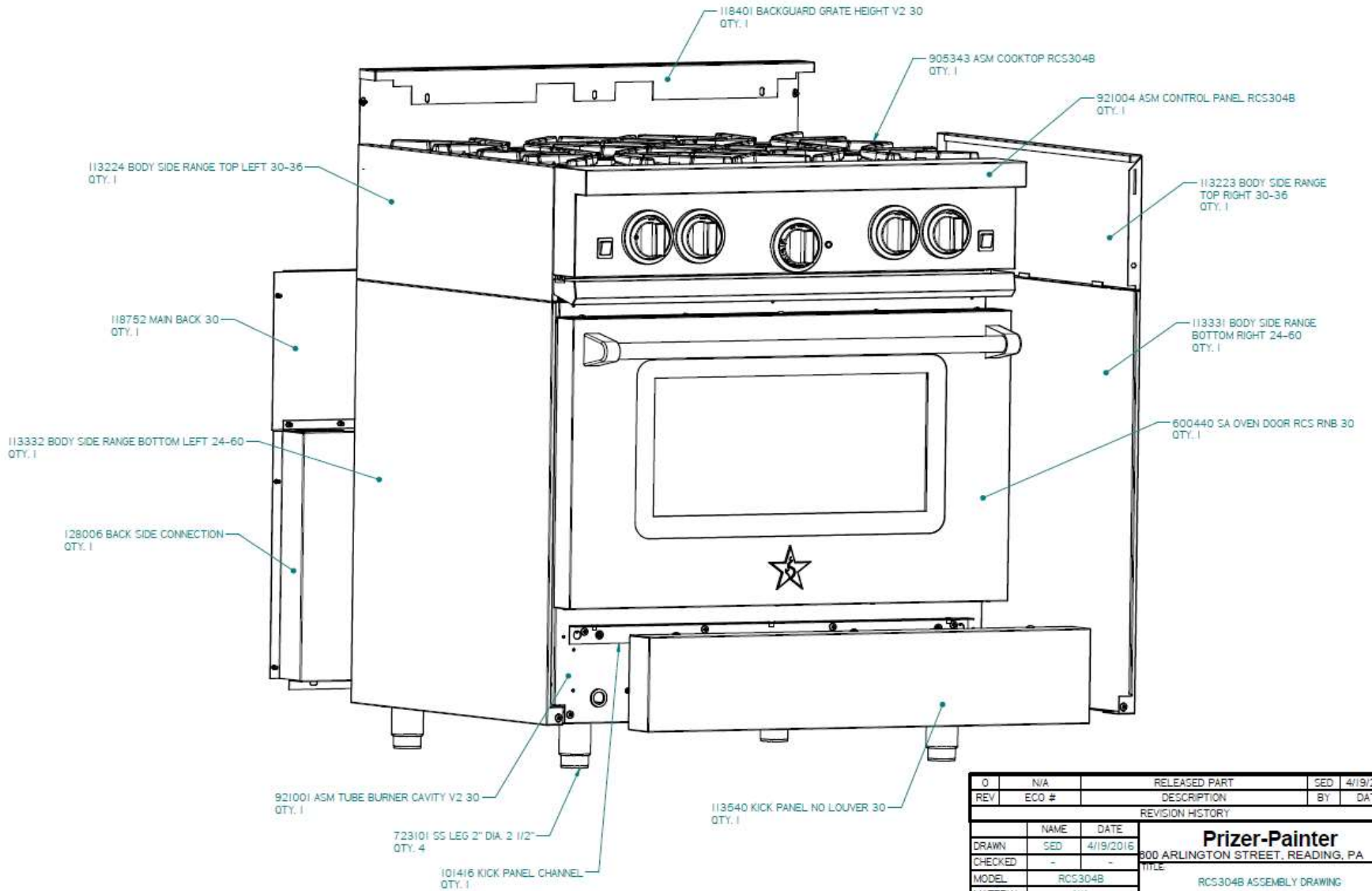


Factory Assembly Drawings

RCS304B

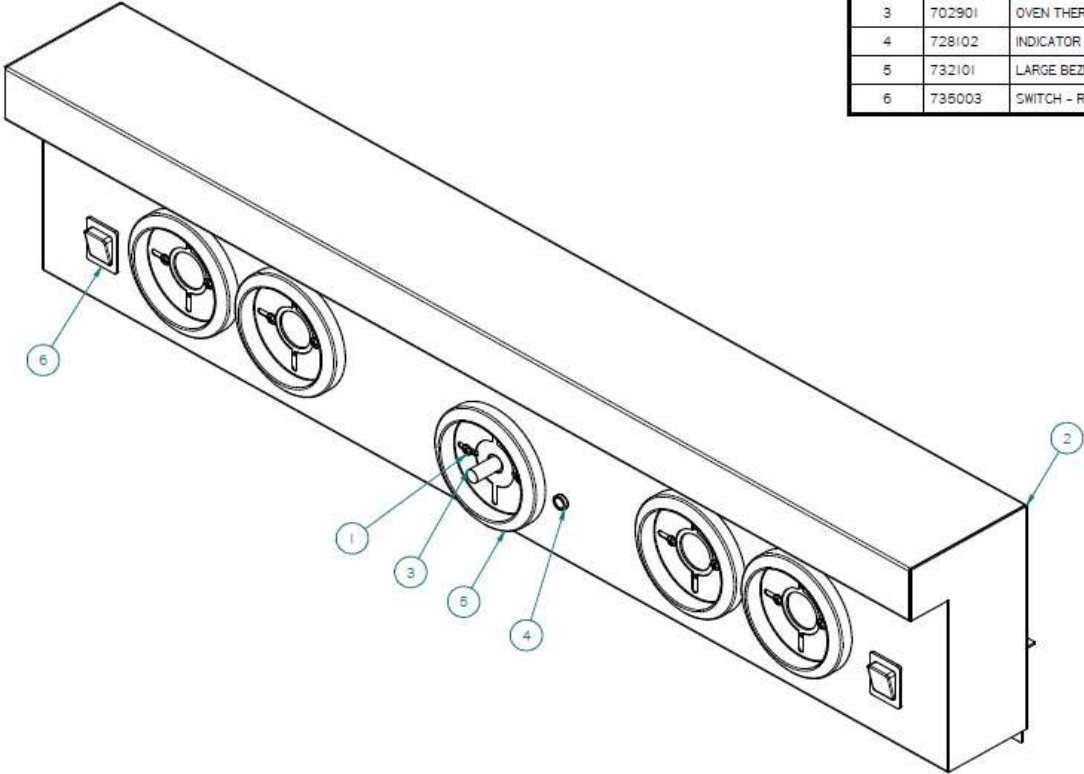
Blue Star RCS 30" – 4 Burner Gas Range

Accurate as of 3/1/2016

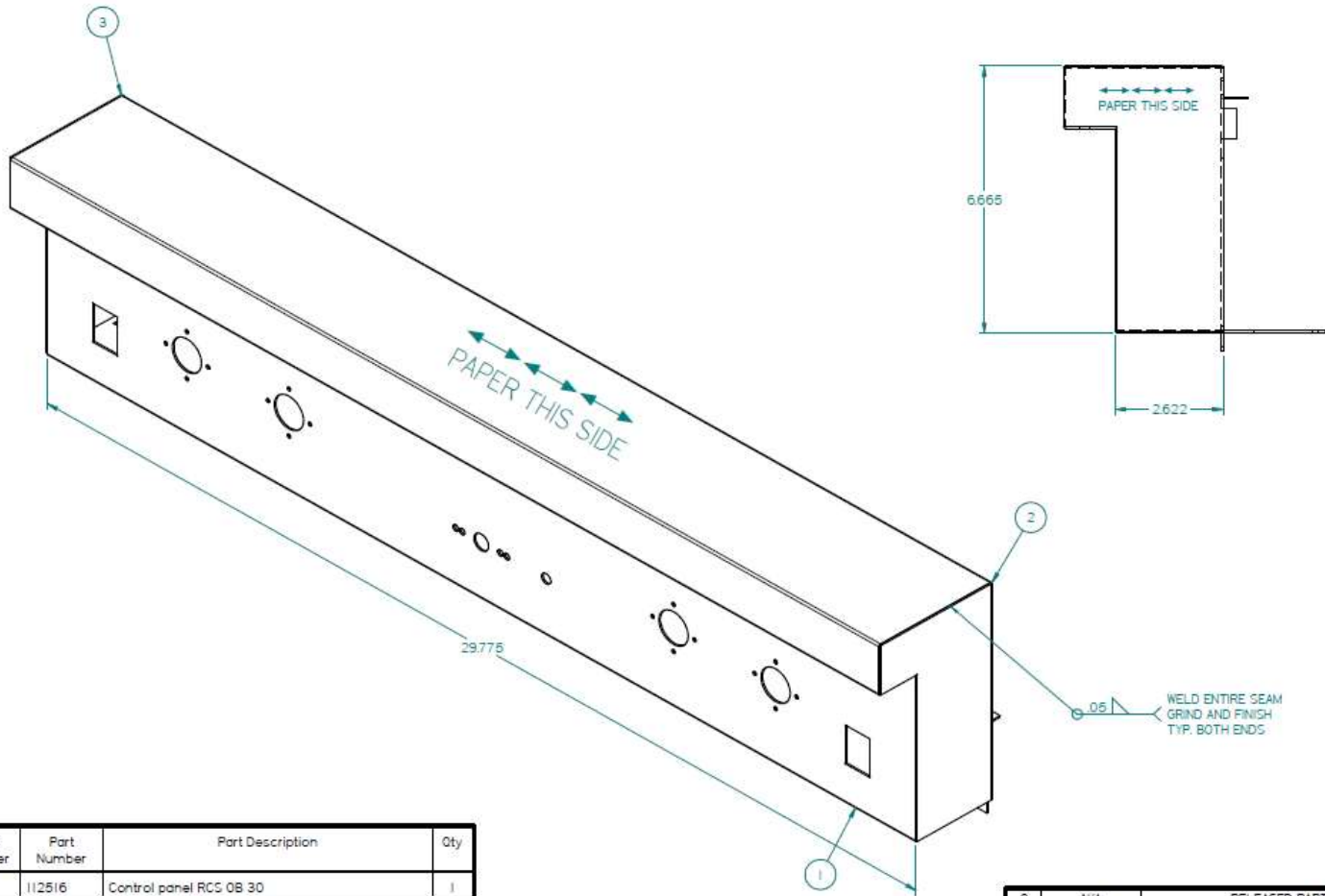


| | | | | |
|---|-------|---------------|---|--------------|
| 0 | N/A | RELEASED PART | SED | 4/19/2016 |
| REV | ECO # | DESCRIPTION | BY | DATE |
| REVISION HISTORY | | | | |
| | NAME | DATE | Prizer-Painter 300 ARLINGTON STREET, READING, PA 19611 TITLE RCS304B ASSEMBLY DRAWING | |
| DRAWN | SED | 4/19/2016 | | |
| CHECKED | - | - | | |
| MATERIAL | N/A | | | |
| UNLESS OTHERWISE SPECIFIED DIMENSIONS ARE IN INCHES ANGLES ±1.0° DECIMAL ±0.016 FRACTION ±1/32 | | | SIZE PART NO | REV |
| | | | C | RCS304B |
| FILE: RCS304B ASSEMBLY DRAWING.dwg | | | | SHEET 1 OF 1 |

| Item Number | Part Number | Part Description | Qty |
|-------------|-------------|--------------------------|-----|
| 1 | 305201 | SCREW 6-32 x PAN HEAD | 10 |
| 2 | 600247 | WA CONTROL PANEL RCS304B | 1 |
| 3 | 702901 | OVEN THERMOSTAT (712101) | 1 |
| 4 | 728102 | INDICATOR LAMP - BLUE | 1 |
| 5 | 732101 | LARGE BEZEL | 5 |
| 6 | 738003 | SWITCH - ROCKER | 2 |



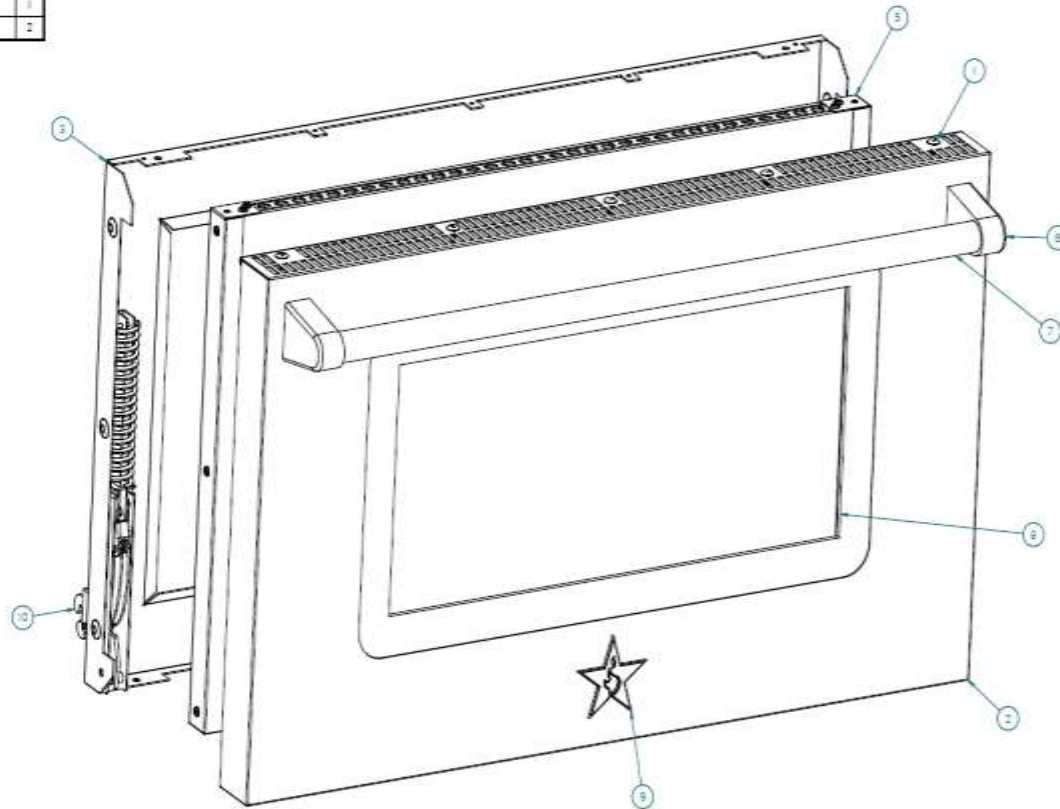
| Q | N/A | RELEASED PART | SED | 4/19/2016 |
|--|---------|--|--------------|-----------|
| REV | ECO # | DESCRIPTION | BY | DATE |
| REVISION HISTORY | | | | |
| | NAME | DATE | | |
| DRAWN | SED | 4/19/2016 | | |
| CHECKED | - | - | | |
| MODEL | RCS304B | Prizer-Painter 800 ARLINGTON STREET, READING, PA 19611 TITLE: | | |
| MATERIAL | N/A | | | |
| UNLESS OTHERWISE SPECIFIED DIMENSIONS ARE IN INCHES ANGLES ±10° DECIMAL ±0.016 FRACTION ±1/32 | | SIZE | PART NO | REV |
| | | C | 921004 | 0 |
| FILE: 921004 ASM CONTROL PANEL RCS304B.dwg | | | SHEET 1 OF 1 | |



| Item Number | Part Number | Part Description | Qty |
|-------------|-------------|--------------------------------|-----|
| 1 | 112516 | Control panel RCC OB 30 | 1 |
| 2 | 149313 | CNTRL PNL END CAP RIGHT RCS SB | 1 |
| 3 | 149314 | CNTRL PNL END CAP LEFT RCS SB | 1 |

| REV | ECO # | DESCRIPTION | BY | DATE |
|--|---------|---------------|---|-----------|
| 0 | N/A | RELEASED PART | SED | 4/19/2016 |
| REVISION HISTORY | | | | |
| DRAWN | NAME | DATE | Prizer-Painter 800 ARLINGTON STREET, READING, PA 19611 TITLE: WA CONTROL PANEL RCS304B | |
| CHECKED | SED | 4/19/2016 | | |
| MODEL | - | - | | |
| MATERIAL | RCS304B | N/A | | |
| UNLESS OTHERWISE SPECIFIED DIMENSIONS ARE IN INCHES ANGLES ±1.0° | | | SIZE | PART NO |
| DECIMAL ±0.016 FRACTION ±1/32 | | | C | 500247 |
| | | | | REV |
| | | | | 0 |
| FILE 500247 WA CONTROL PANEL RCS304B.dwg SHEET 1 OF 1 | | | | |

| Item Number | Part Number | Part Description | Qty |
|-------------|-------------|---------------------------------|-----|
| 1 | 309220 | # 10 x 1-2 Phillips Trust Head | 14 |
| 2 | 17485 | DOOR PANEL VC 30 | 1 |
| 3 | 174846 | DOOR LINER VC 30 | 1 |
| 5 | 810025 | BSP 30 GLASS PACK | 1 |
| 6 | 703001 | Handle End | 2 |
| 7 | 703116 | TUBE DOOR HANDLE BSP 30 | 1 |
| 8 | 703503 | DOOR GLASS 30 STENCIL SHORT BSP | 1 |
| 9 | T40482 | BLUESTAR LOGO STAR SS | 1 |
| 10 | T40705 | HUGE KEYSTONE RED | 2 |



| REV | DATE | DESCRIPTION | BY | DATE |
|--|-------------------------|--------------------------------------|-------|----------|
| 0 | NA | RELEASED PART | SED | 01/10/08 |
| 1 | 000 # | DESCRIPTION | BY | DATE |
| REVISION HISTORY: | | | | |
| DATE | TIME | DATE | | |
| DRAWN | ... | 01/10/08 | | |
| CHECKED | ... | ... | | |
| MODEL | SA 010V DOOR RIB RCT 30 | | | |
| MATERIAL | | | | |
| UNLESS OTHERWISE SPECIFIED DIMENSIONS ARE IN INCHES ANGLES IN DEGREES DECIMAL FRACTIONS 1/32 | | SIZE PART NO | QTY | |
| | | D 600440 | 0 | |
| | | FILE 600440 for 010V DOOR RIB RCT 30 | SHEET | 1 OF 1 |

Prizer-Painter

600 ARLINGTON STREET, READING, PA. 19601

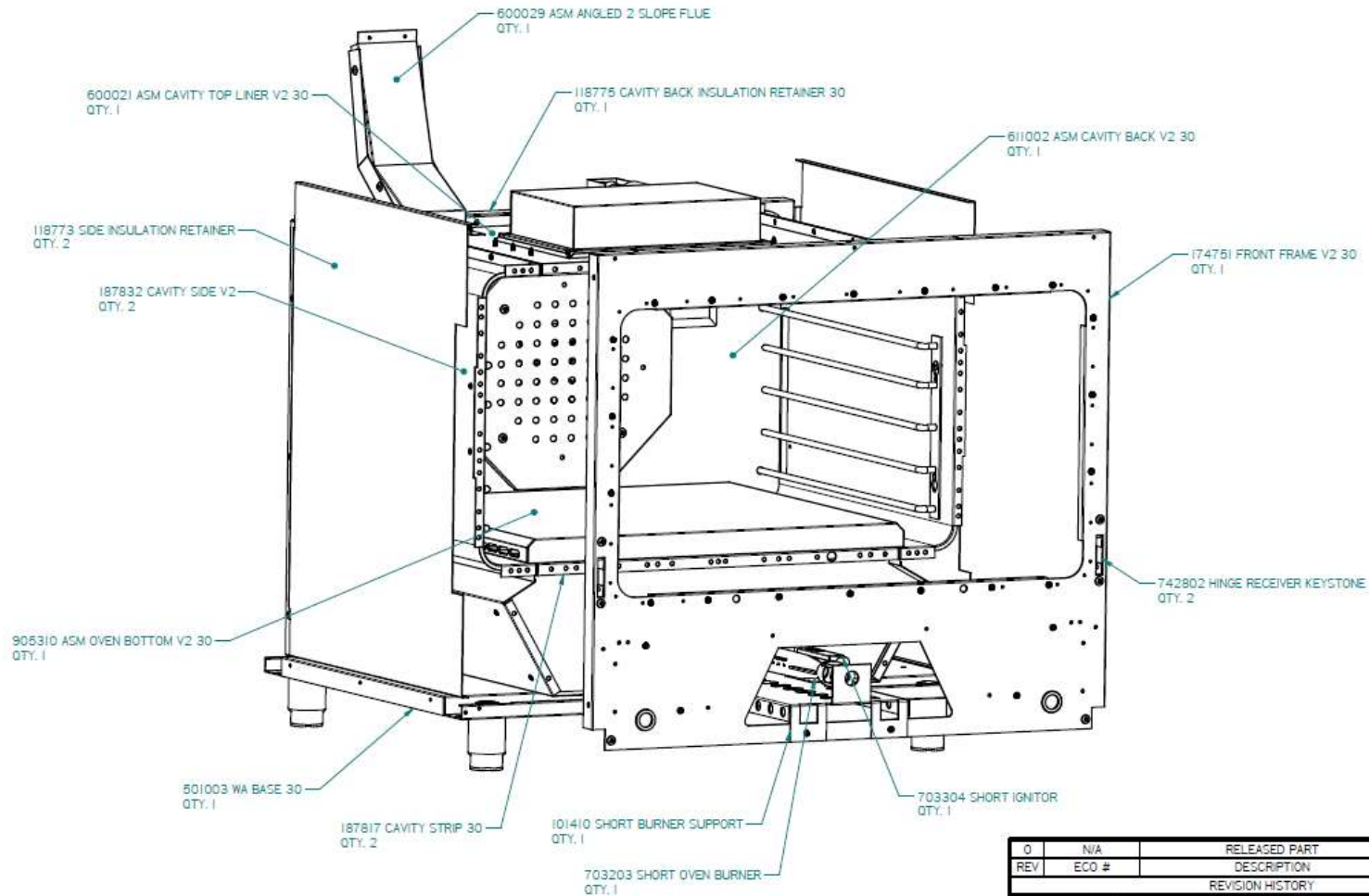
SA 010V DOOR RIB RCT 30

600440

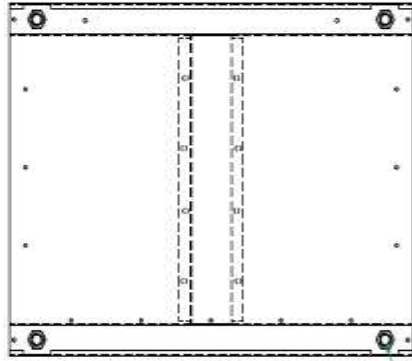
0

FILE 600440 for 010V DOOR RIB RCT 30

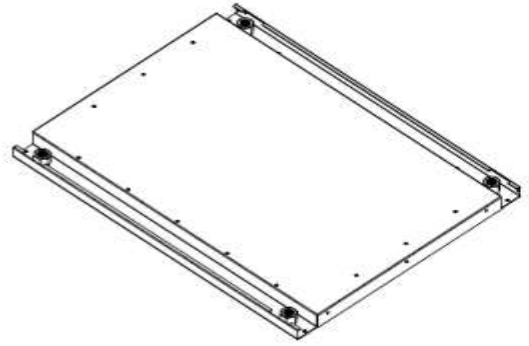
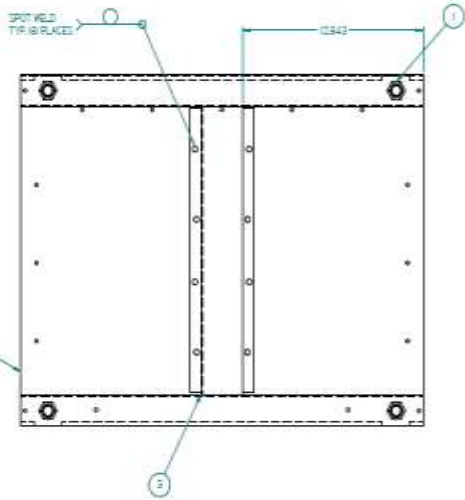
SHEET 1 OF 1



| | | | | |
|--|---------|---------------|---|--------------|
| 0 | N/A | RELEASED PART | SED | 2/17/2016 |
| REV | ECO # | DESCRIPTION | BY | DATE |
| REVISION HISTORY | | | | |
| | NAME | DATE | | |
| DRAWN | SED | 2/17/2016 | Prizer-Painter 800 ARLINGTON STREET, READING, PA 19611 TITLE ASM TUBE BURNER CAVITY V2 30 | |
| CHECKED | - | - | | |
| MODEL | RNB/RCS | | | |
| MATERIAL | N/A | | | |
| UNLESS OTHERWISE SPECIFIED DIMENSIONS ARE IN INCHES ANGLES ±1.0° | | | SIZE | PART NO |
| DECIMAL ±0.016 FRACTION ±1/32 | | | C | 921001 |
| | | | REV | 0 |
| | | | FILE: 921001 ASM TUBE BURNER CAVITY V2 30 | SHEET 1 OF 1 |



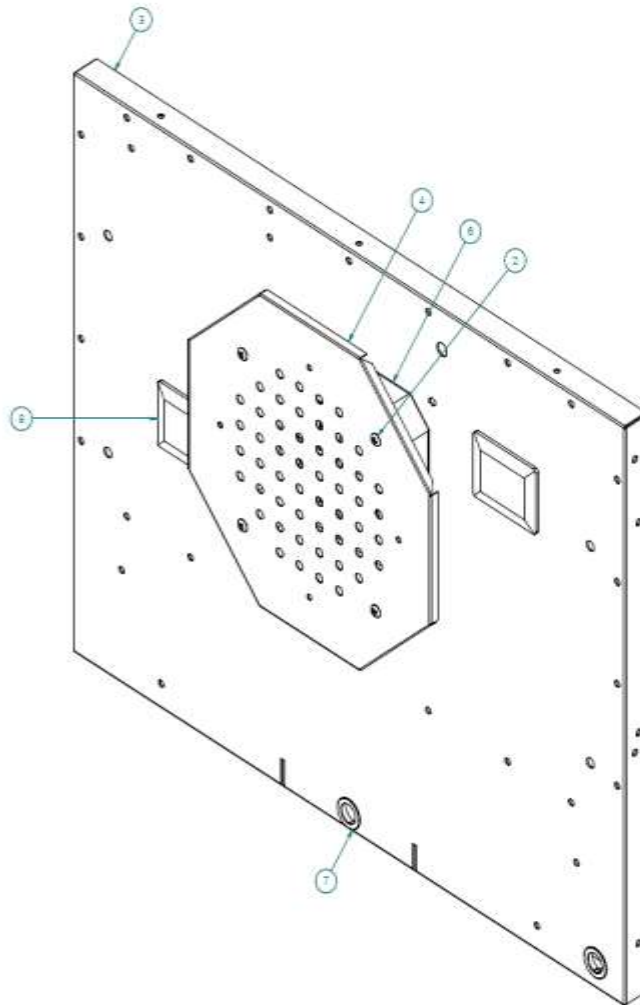
CENTER NUT OVER HOLE
AND WELD IN PLACE OR PLACE



| Item Number | Part Number | Part Description | Qty |
|-------------|-------------|------------------|-----|
| 1 | 20241 | 2-4 x 10 Nut | 4 |
| 2 | 112006 | RANGE BASE 20 | 1 |
| 3 | 112012 | Base Offener | 1 |

| REV | BY | DATE | DESCRIPTION |
|-----|----|------|-------------|
| | | | |

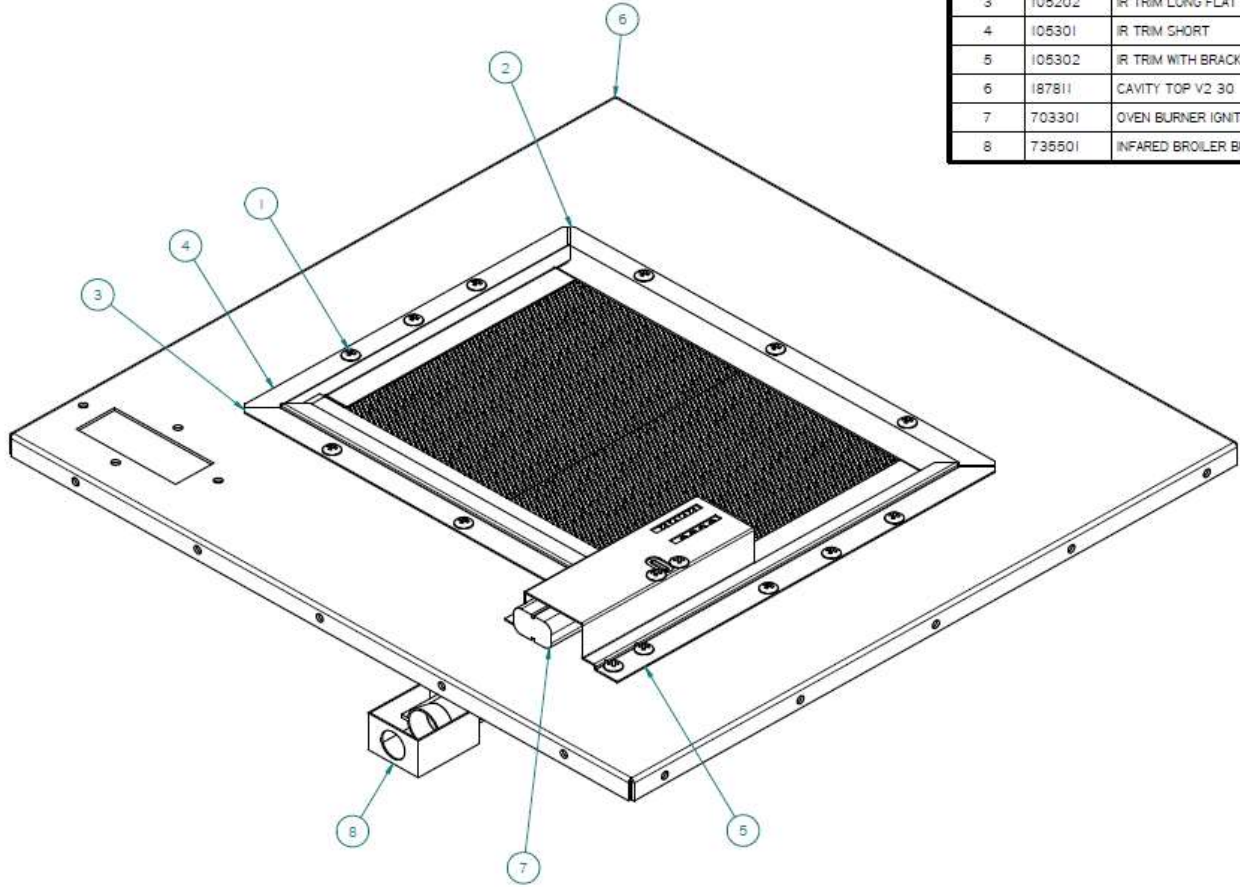
| | |
|-------------|----------------|
| DATE | 2/15/2018 |
| DESIGNED BY | Prizer-Painter |
| CHECKED BY | |
| MODEL | 112006 |
| MATERIAL | 304 SS |
| QUANTITY | 1 |
| UNIT | INCHES |
| SCALE | 1:1 |
| SHEET | 1 OF 1 |



| Item Number | Part Number | Part Description | Qty |
|-------------|-------------|-----------------------------------|-----|
| 2 | 30023 | 10 x 1 1/2 Phillips Truss Head | 4 |
| 3 | 87848 | CAVITY BACK VC 30 | 1 |
| 4 | 99058 | DIEN FAN SHIELD ELECTRIC | 1 |
| 5 | 308404 | Rimula #16 1004 | 4 |
| 6 | 800039 | FAN GR | 1 |
| 7 | 741001 | 1" DMIP SLUSHING | 2 |
| 8 | 748104 | Lamp Assy - 25 W Halogen - Narrow | 2 |

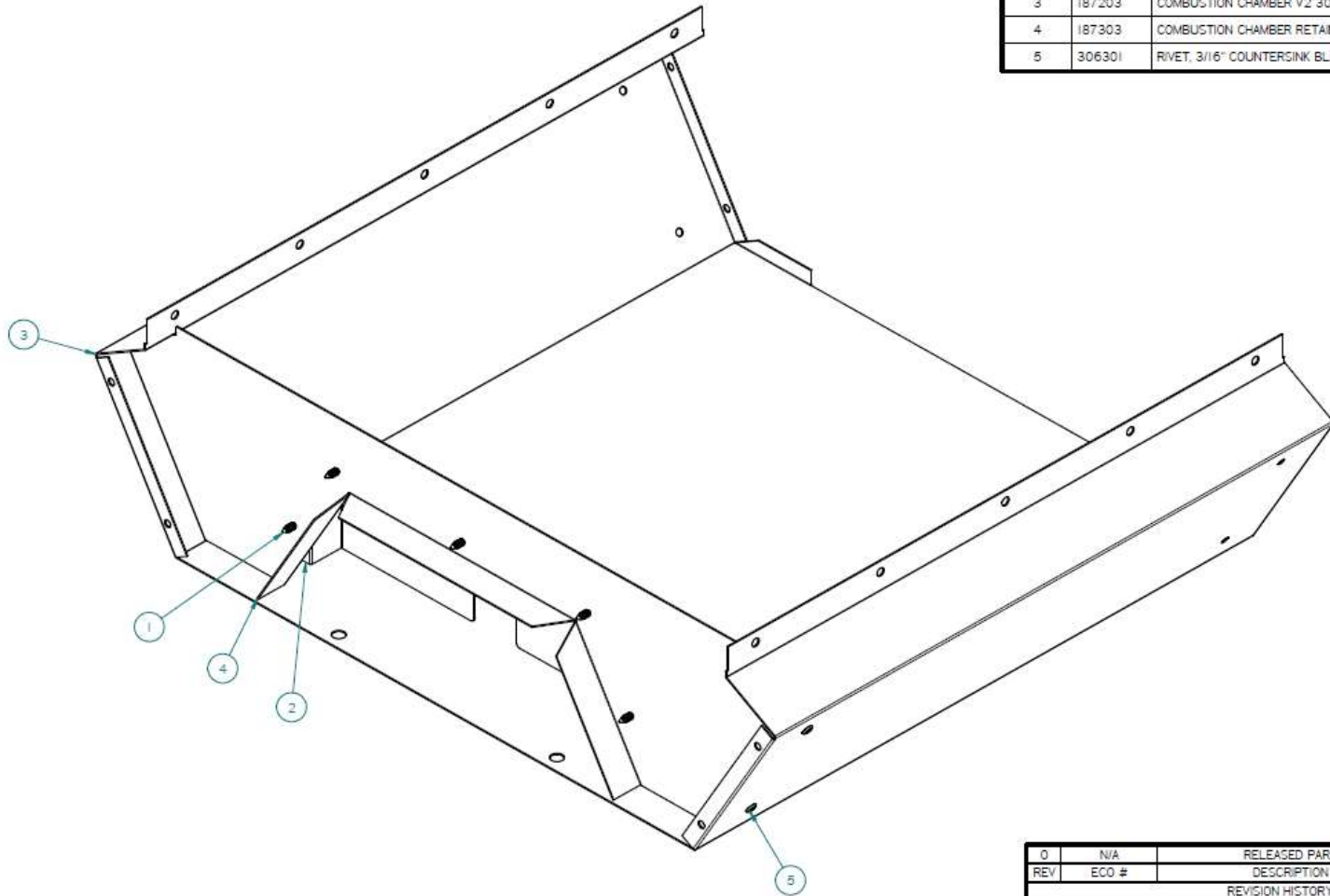
| | | | |
|---|------------|--|--------------|
| 0 | N/A | RELEASED PART | 02/11/2016 |
| REV | ECC # | DESCRIPTION | BY DATE |
| REVISION HISTORY: | | | |
| ISSUE | DATE | Prizer-Painter 300 ARLINGTON STREET, READING, PA 19601 | |
| 0001 | 02/11/2016 | | |
| CHECKED | DATE | 100 | |
| MODEL | PROJCD | IGW CAVITY BACK VC 30 | |
| MATERIAL | FIN | | |
| UNLESS OTHERWISE SPECIFIED: DIMENSIONS ARE IN INCHES ANGLES 45° | | | ISSUE # |
| DECIMAL 40:6 FRACTION 4/32 | | | NO |
| | | | 0 |
| PLA 611002 400 CAVITY BACK VC 30.dwg | | | SHEET 1 OF 1 |

| Item Number | Part Number | Part Description | Qty |
|-------------|-------------|--------------------------------|-----|
| 1 | 303201 | # 10 x 1-2 Phillips Truss Head | 18 |
| 2 | 105201 | IR TRIM LONG | 1 |
| 3 | 105202 | IR TRIM LONG FLAT END | 1 |
| 4 | 105301 | IR TRIM SHORT | 1 |
| 5 | 105302 | IR TRIM WITH BRACKET | 1 |
| 6 | 187811 | CAVITY TOP V2 30 | 1 |
| 7 | 703301 | OVEN BURNER IGNITOR 1593500 | 1 |
| 8 | 735501 | INFARED BROILER BURNER 3/8" | 1 |



| REV | ECO # | DESCRIPTION | BY | DATE |
|--|-----------|---|-----|-----------|
| 0 | N/A | RELEASED PART | SED | 2/17/2016 |
| REVISION HISTORY | | | | |
| NAME | DATE | Prizer-Painter 800 ARLINGTON STREET, READING, PA 19611 TITLE: ASM CAVITY TOP LINER V2 30 | | |
| DRAWN | 2/17/2016 | | | |
| CHECKED | - | | | |
| MODEL | RNB/RCS | | | |
| MATERIAL | N/A | UNLESS OTHERWISE SPECIFIED DIMENSIONS ARE IN INCHES ANGLES ±1.0° DECIMAL ±0.016 FRACTION ±1/32 | | |
| SIZE | PART NO | REV | | |
| C | 600021 | 0 | | |
| FILE: 600021 ASM CAVITY TOP LINER V2 30.dft SHEET 1 OF 1 | | | | |

| Item Number | Part Number | Part Description | Qty |
|-------------|-------------|-----------------------------------|-----|
| 1 | 303201 | # 10 x 1-2 Phillips Truss Head | 5 |
| 2 | 101414 | COMB. CHAMBER FRONT RETAINER | 1 |
| 3 | 187203 | COMBUSTION CHAMBER V2 30 | 1 |
| 4 | 187303 | COMBUSTION CHAMBER RETAINER V2 30 | 1 |
| 5 | 306301 | RIVET, 3/16" COUNTERSINK BLIND | 4 |

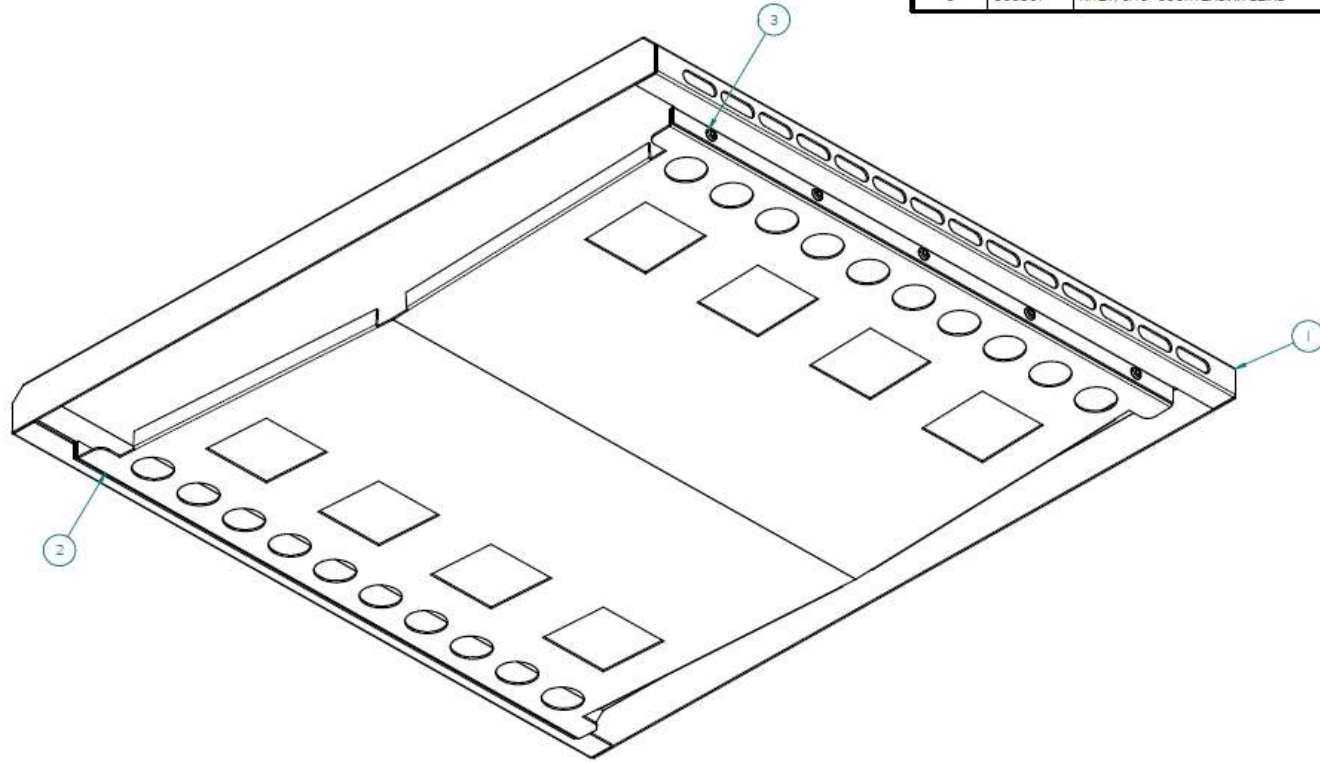


| | | | | |
|---|---------|---------------|--|-----------|
| 0 | N/A | RELEASED PART | SED | 2/17/2016 |
| REV | ECO # | DESCRIPTION | BY | DATE |
| REVISION HISTORY | | | | |
| | NAME | DATE | | |
| DRAWN | SED | 2/17/2016 | | |
| CHECKED | - | - | | |
| MODEL | RNB/RCS | | | |
| MATERIAL | N/A | | | |
| UNLESS OTHERWISE SPECIFIED DIMENSIONS ARE IN INCHES ANGLES ±1.0° DECIMAL ±0.016 FRACTION ±1/32 | | | SIZE | REV |
| | | | C | 0 |
| | | | PART NO 611004 | |
| | | | FILE: 611004 ASM COMBUSTION CHAMBER V2 30 SHEET 1 OF 1 | |

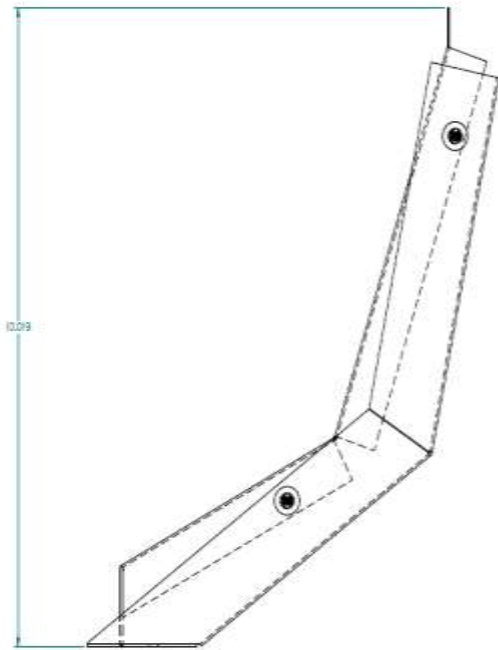
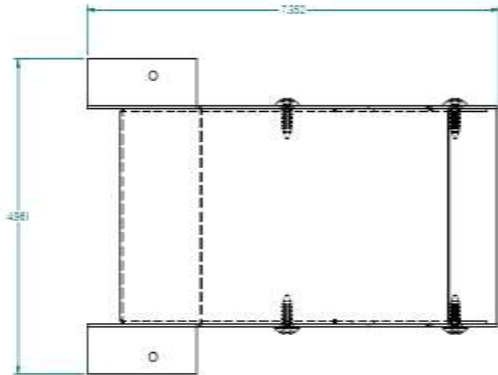
Prizer-Painter
300 ARLINGTON STREET, READING, PA 19811

TITLE
ASM COMBUSTION CHAMBER V2 30

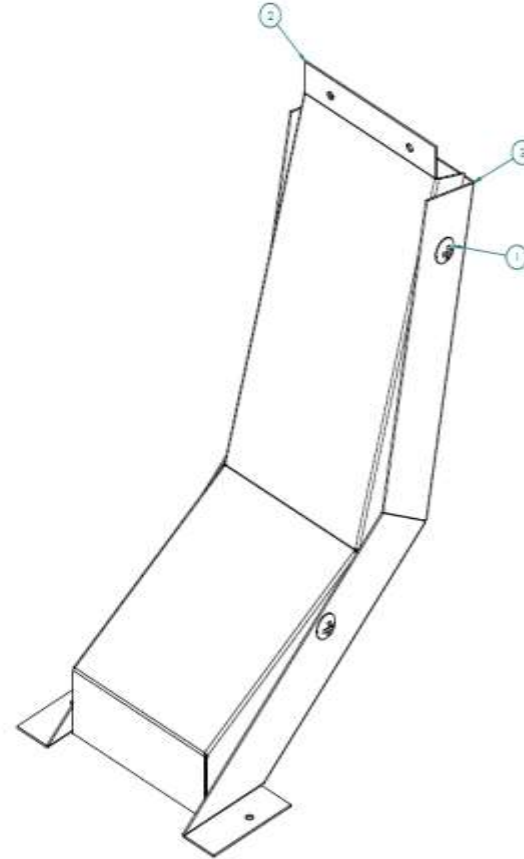
| Item Number | Part Number | Part Description | Qty |
|-------------|-------------|--------------------------------|-----|
| 1 | 188903 | OVEN BOTTOM V2 30 | 1 |
| 2 | 188903 | FLAME DIVERTER V2 30 | 1 |
| 3 | 306301 | RIVET, 3/16" COUNTERSINK BLIND | 10 |



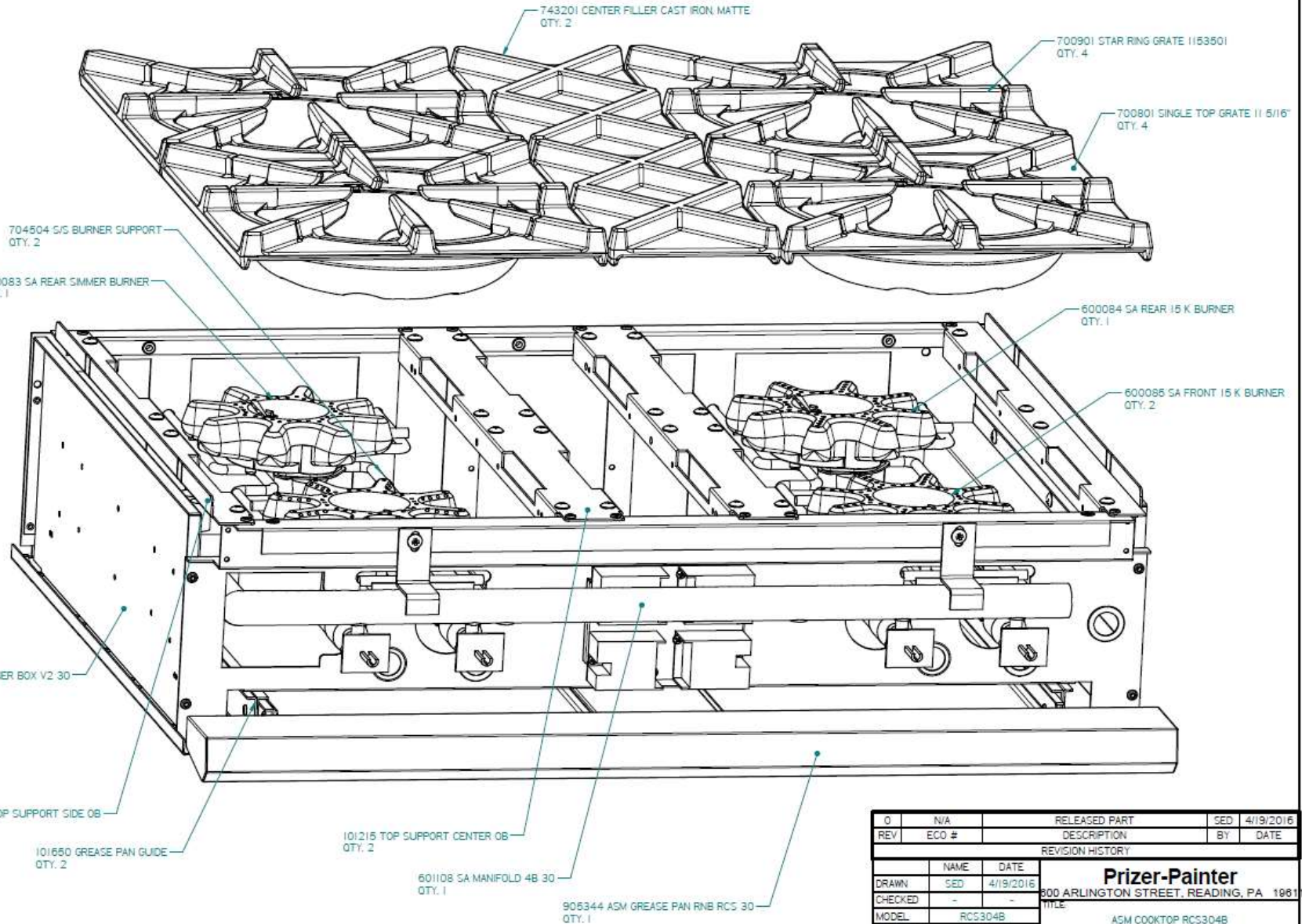
| REV | ECO # | DESCRIPTION | BY | DATE | |
|--|---------|---------------|--|-----------|--------------|
| 0 | N/A | RELEASED PART | SED | 2/17/2016 | |
| REVISION HISTORY | | | | | |
| DRAWN | NAME | DATE | Prizer-Painter 900 ARLINGTON STREET, READING, PA 19611 TITLE: ASM OVEN BOTTOM V2 30 | | |
| CHECKED | - | - | | | |
| MODEL | RNB/RCS | | | | |
| MATERIAL | N/A | | | | |
| UNLESS OTHERWISE SPECIFIED DIMENSIONS ARE IN INCHES ANGLES ±1.0° | | | SIZE | PART NO | REV |
| DECIMAL ±0.016 FRACTION ±1/32 | | | C | 905310 | 0 |
| FILE: 905310 ASM OVEN BOTTOM V2 30.dft | | | | | SHEET 1 OF 1 |



| Item Number | Part Number | Part Description | Qty |
|-------------|-------------|------------------------------|-----|
| 1 | 30320 | #10 x 1/2 Philips Truss Head | 4 |
| 2 | 16614 | ANGLED 2 SLOPE FLUE TOP | 1 |
| 3 | 16615 | ANGLED 2 SLOPE FLUE BOTTOM | 1 |

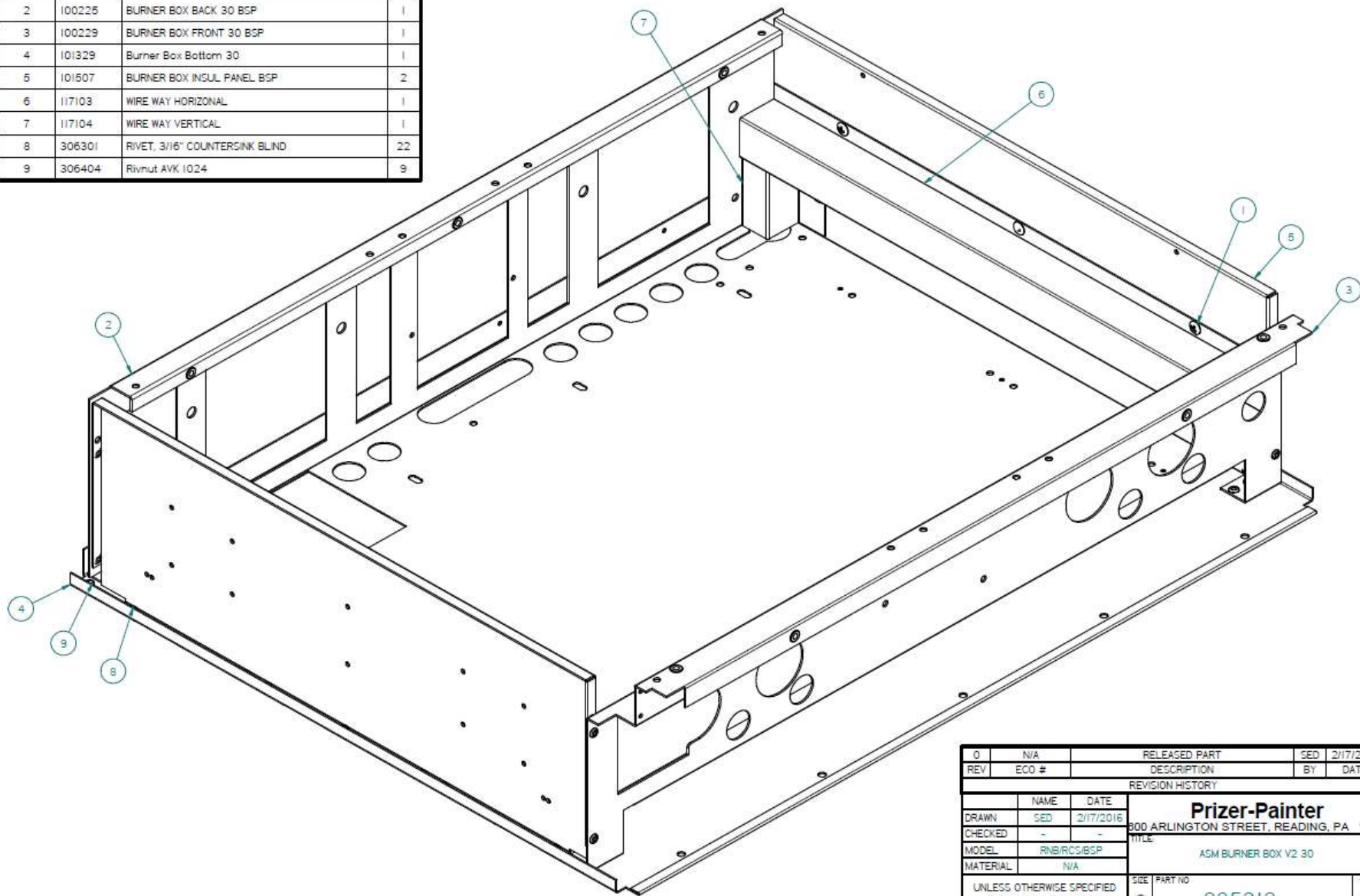


| REV | ISS | RELEASED PART | ISS | DATE |
|---|--------|---------------|-----|------|
| 1 | ECC # | DESCRIPTION | BY | DATE |
| REVISION HISTORY | | | | |
| DATE | ISS | DATE | | |
| Prizer-Painter | | | | |
| 800 ARLINGTON STREET, READING, PA. 19601 | | | | |
| TEL: 610-771-1111 | | | | |
| FAX: 610-771-1112 | | | | |
| WWW.PRIZER-PAINTER.COM | | | | |
| MATERIAL: 304 SS | | | | |
| UNLESS OTHERWISE SPECIFIED: DIMENSIONS ARE IN INCHES ANGLES 45° | | | | |
| DECIMALS: 40±0.0005 FRACTIONS: 1/32 | | | | |
| ISS | ISS | ISS | ISS | ISS |
| D | 600029 | 0 | | |
| PLS 30320 FOR ANGLED 2 SLOPE FLUE | | | | |
| SHEET 1 OF 1 | | | | |



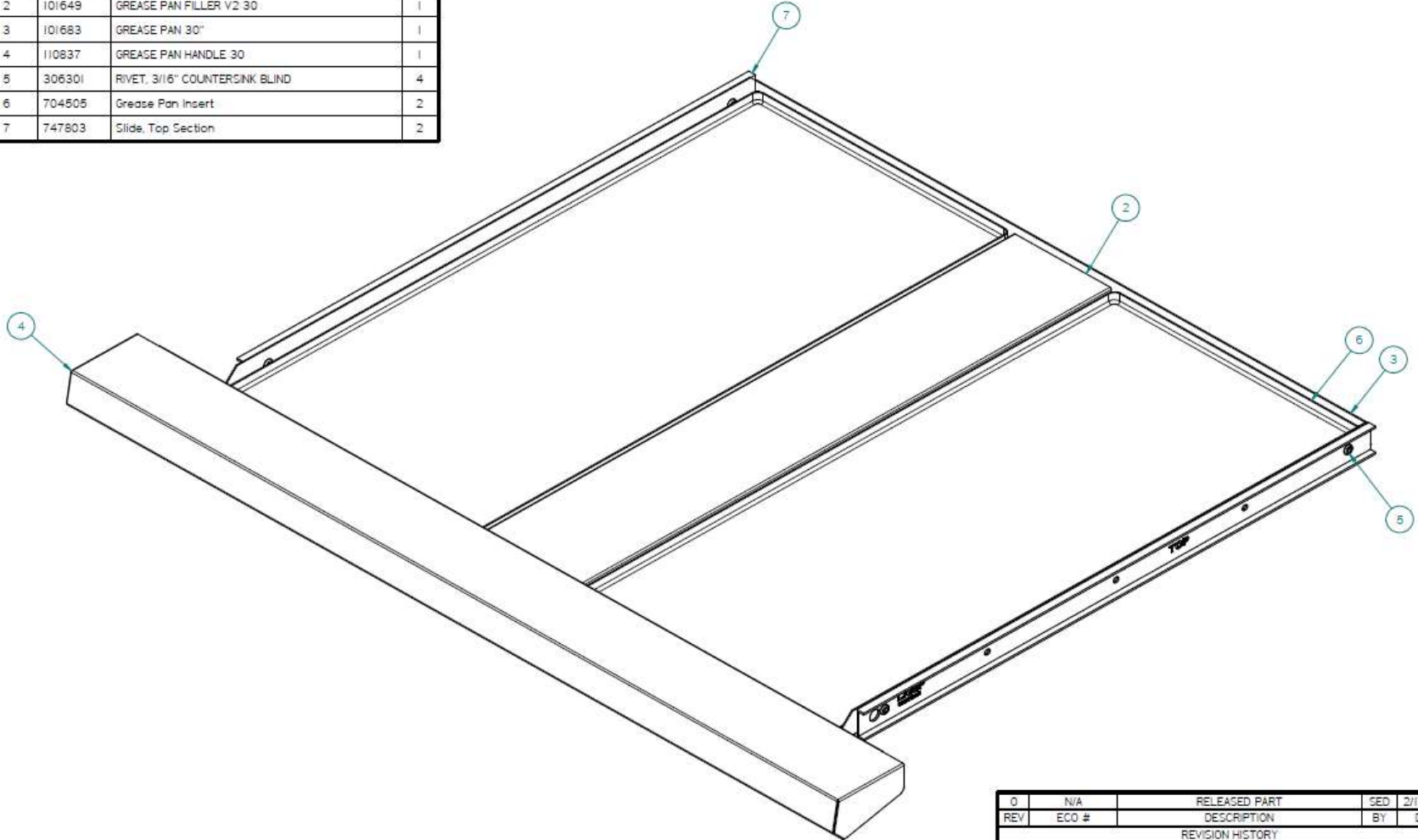
| | | | | |
|---|---------|---|--------------------------|--------------|
| 0 | N/A | RELEASED PART | SED | 4/19/2016 |
| REV | ECO # | DESCRIPTION | BY | DATE |
| REVISION HISTORY | | | | |
| | NAME | DATE | | |
| DRAWN | SED | 4/19/2016 | | |
| CHECKED | - | - | | |
| MODEL | RCS304B | 800 ARLINGTON STREET, READING, PA 19811 | | |
| MATERIAL | N/A | TITLE ASM COOKTOP RCS304B | | |
| UNLESS OTHERWISE SPECIFIED DIMENSIONS ARE IN INCHES ANGLES ±1.0° DECIMAL ±0.016 FRACTION ±1/32 | | | SIZE C | REV 0 |
| FILE: 905343 ASM COOKTOP RCS304B.dft | | | PART NO 905343 | SHEET 1 OF 1 |

| Item Number | Part Number | Part Description | Qty |
|-------------|-------------|--------------------------------|-----|
| 1 | 303201 | # 10 x 1-2 Phillips Truss Head | 7 |
| 2 | 100225 | BURNER BOX BACK 30 BSP | 1 |
| 3 | 100229 | BURNER BOX FRONT 30 BSP | 1 |
| 4 | 101329 | Burner Box Bottom 30 | 1 |
| 5 | 101507 | BURNER BOX INSUL PANEL BSP | 2 |
| 6 | 117103 | WIRE WAY HORIZONTAL | 1 |
| 7 | 117104 | WIRE WAY VERTICAL | 1 |
| 8 | 306301 | RIVET, 3/16" COUNTERSINK BLIND | 22 |
| 9 | 306404 | Rivnut AVK 1024 | 9 |



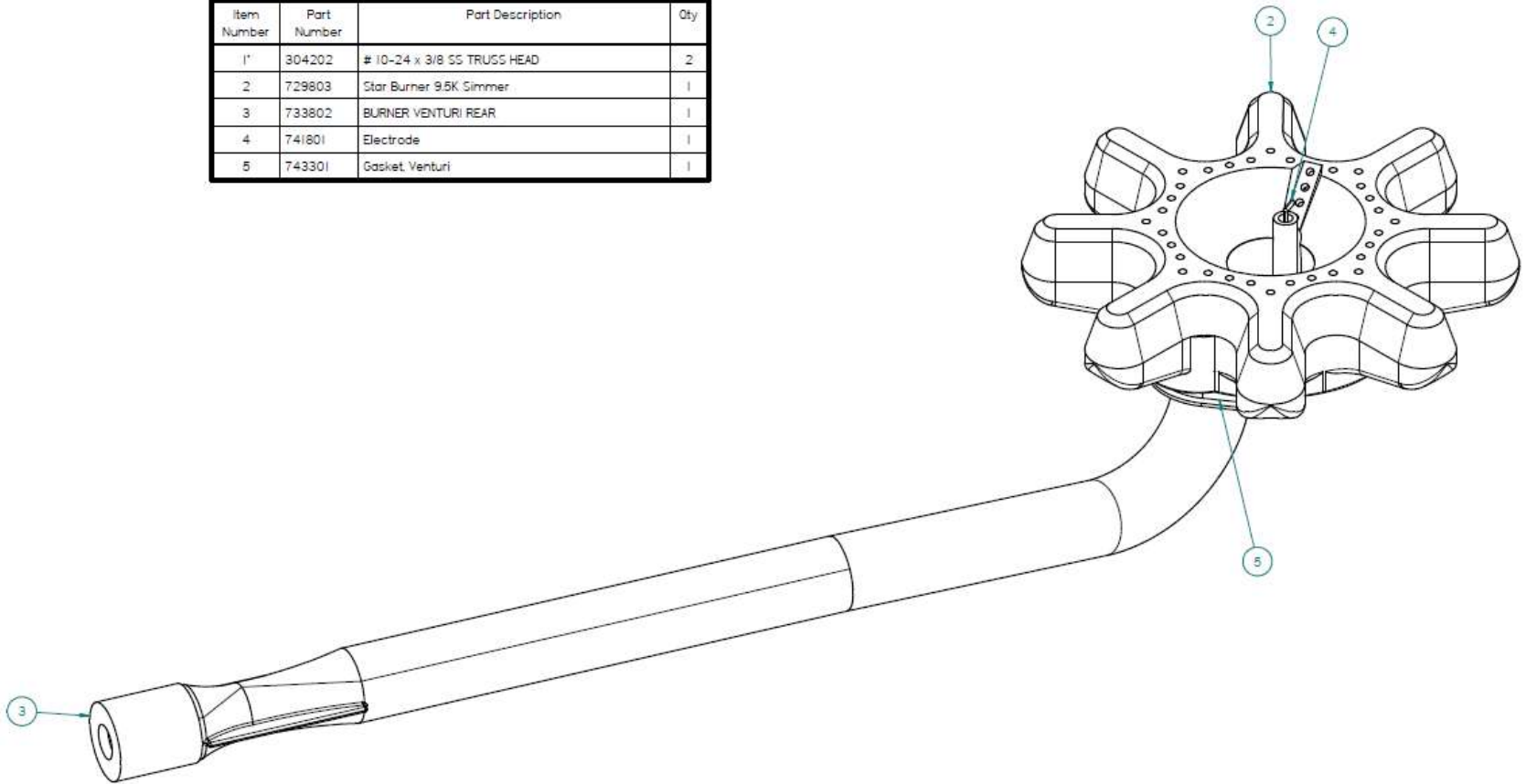
| | | | | |
|---|-------------|---------------|---|-----------------|
| 0 | N/A | RELEASED PART | SED | 2/17/2016 |
| REV | ECO # | DESCRIPTION | BY | DATE |
| REVISION HISTORY | | | | |
| | NAME | DATE | | |
| DRAWN | SED | 2/17/2016 | Prizer-Painter 800 ARLINGTON STREET, READING, PA 19611 TITLE ASM BURNER BOX V2 30 | |
| CHECKED | - | - | | |
| MODEL | RNB/RCS/BSP | | | |
| MATERIAL | N/A | | | |
| UNLESS OTHERWISE SPECIFIED DIMENSIONS ARE IN INCHES ANGLES ±1.0° DECIMAL ±0.016 FRACTION ±1/32 | | | SIZE / PART NO C / 905313 | REV 0 |
| FILE: 905313 ASM BURNER BOX V2 30.dft | | | SHEET 1 OF 1 | |

| Item Number | Part Number | Part Description | Qty |
|-------------|-------------|--------------------------------|-----|
| 1 | 303201 | # 10 x 1-2 Phillips Truss Head | 4 |
| 2 | 101649 | GREASE PAN FILLER V2 30 | 1 |
| 3 | 101683 | GREASE PAN 30" | 1 |
| 4 | 110837 | GREASE PAN HANDLE 30 | 1 |
| 5 | 306301 | RIVET, 3/16" COUNTERSINK BLIND | 4 |
| 6 | 704505 | Grease Pan Insert | 2 |
| 7 | 747803 | Slide, Top Section | 2 |



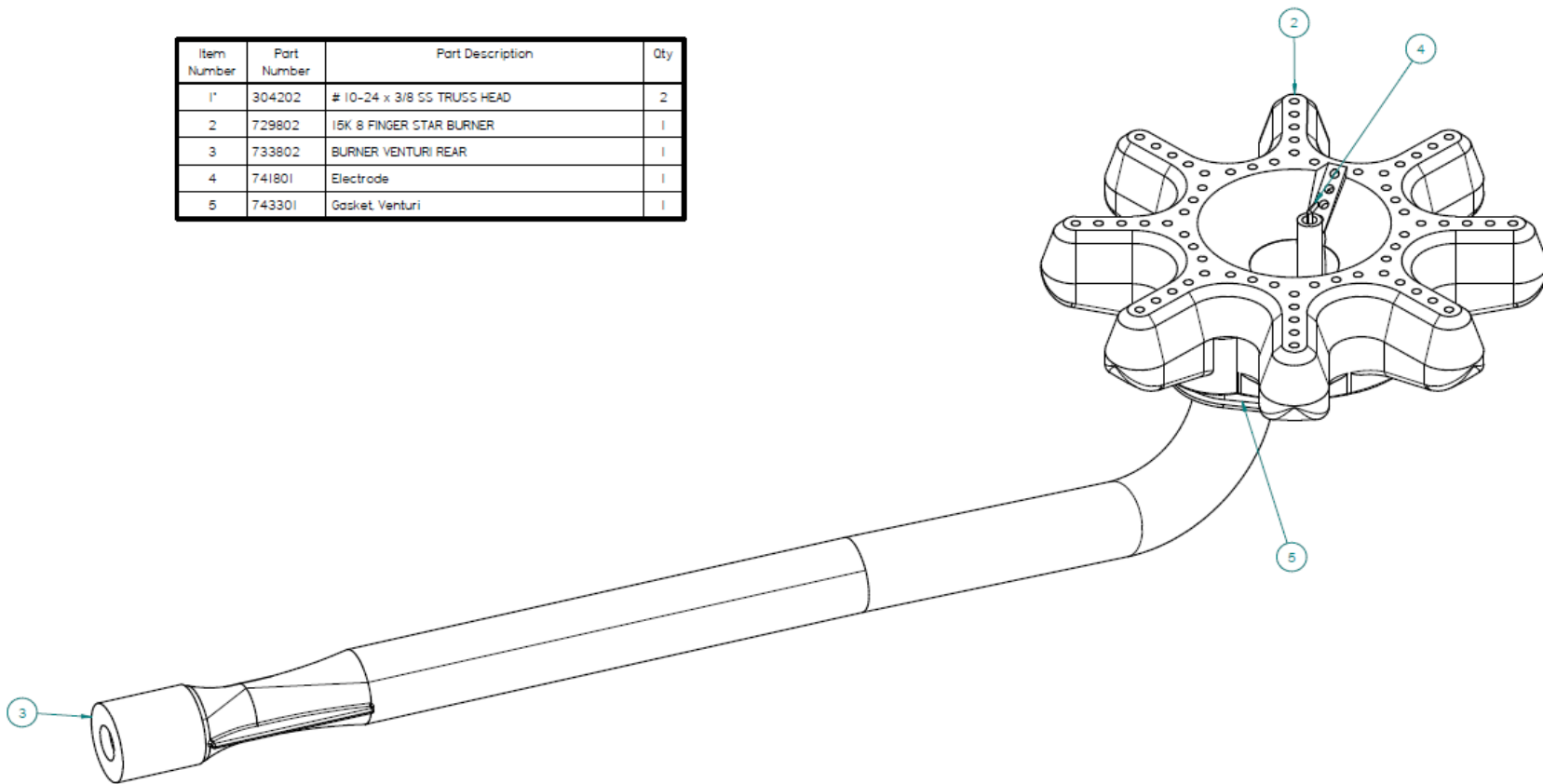
| REV | ECO # | DESCRIPTION | BY | DATE |
|--|---------|---------------|--|--------------|
| 0 | N/A | RELEASED PART | SED | 2/17/2016 |
| REVISION HISTORY | | | | |
| DRAWN | NAME | DATE | Prizer-Painter 800 ARLINGTON STREET, READING, PA 19611 TITLE ASM GREASE PAN RNB / RCS 30 | |
| CHECKED | - | - | | |
| MODEL | RNB/RCS | | | |
| MATERIAL | N/A | | | |
| UNLESS OTHERWISE SPECIFIED DIMENSIONS ARE IN INCHES ANGLES ±10° DECIMAL ±0.016 FRACTION ±1/32 | | | SIZE / PART NO C / 905344 | REV 0 |
| FILE: 905344 ASM GREASE PAN RNB RCS 30.dwg | | | | SHEET 1 OF 1 |

| Item Number | Part Number | Part Description | Qty |
|-------------|-------------|-----------------------------|-----|
| 1' | 304202 | # 10-24 x 3/8 SS TRUSS HEAD | 2 |
| 2 | 729803 | Star Burner 9.5K Simmer | 1 |
| 3 | 733802 | BURNER VENTURI REAR | 1 |
| 4 | 741801 | Electrode | 1 |
| 5 | 743301 | Gasket, Venturi | 1 |



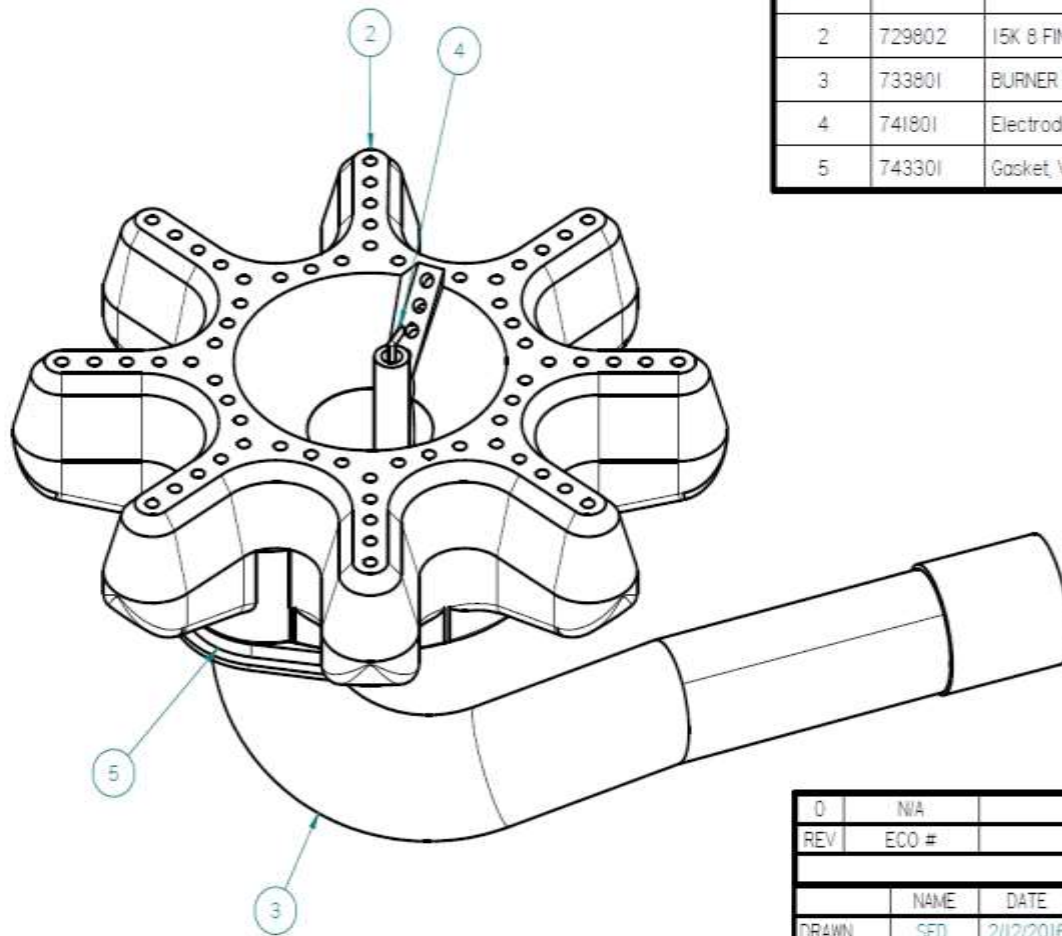
| | | | | |
|---|--------------|---------------|--|--------------|
| 0 | N/A | RELEASED PART | SED | 2/12/2016 |
| REV | ECO # | DESCRIPTION | BY | DATE |
| REVISION HISTORY | | | | |
| | NAME | DATE | | |
| DRAWN | SED | 2/12/2016 | Prizer-Painter 300 ARLINGTON STREET, READING, PA 19611 TITLE SA REAR SIMMER BURNER | |
| CHECKED | - | - | | |
| MODEL | RNB PLATINUM | | | |
| MATERIAL | N/A | | | |
| UNLESS OTHERWISE SPECIFIED DIMENSIONS ARE IN INCHES ANGLES ±1.0° DECIMAL ±0.016 FRACTION ±1/32 | | | SIZE PART NO | REV |
| | | | C 600083 | 0 |
| FILE: 600083 SA REAR SIMMER BURNER.dft | | | | SHEET 1 OF 1 |

| Item Number | Part Number | Part Description | Qty |
|-------------|-------------|-----------------------------|-----|
| 1* | 304202 | # 10-24 x 3/8 SS TRUSS HEAD | 2 |
| 2 | 729802 | 15K 8 FINGER STAR BURNER | 1 |
| 3 | 733802 | BURNER VENTURI REAR | 1 |
| 4 | 741801 | Electrode | 1 |
| 5 | 743301 | Gasket Venturi | 1 |



| REV | ECO # | DESCRIPTION | BY | DATE | |
|---|--------------|---------------|---|------------|-----|
| 0 | N/A | RELEASED PART | SED | 2/12/2016 | |
| REVISION HISTORY | | | | | |
| DRAWN | NAME | DATE | Prizer-Painter 800 ARLINGTON STREET, READING, PA 19811 TITLE: SA REAR 15K BURNER | | |
| CHECKED | SED | 2/12/2016 | | | |
| MODEL | RNB PLATINUM | | | | |
| MATERIAL | N/A | | | | |
| UNLESS OTHERWISE SPECIFIED DIMENSIONS ARE IN INCHES ANGLES ±1.0° DECIMAL ±0.016 FRACTION ±1/32 | | | SIDE | PART NO | REV |
| | | | C | 600084 | 0 |
| FILE: 600084 SA REAR 15K BURNER.djt | | | | SHEET OF | |

| Item Number | Part Number | Part Description | Qty |
|-------------|-------------|-----------------------------|-----|
| 1* | 304202 | # 10-24 x 3/8 SS TRUSS HEAD | 2 |
| 2 | 729802 | 15K 8-FINGER STAR BURNER | 1 |
| 3 | 733801 | BURNER VENTURI FRONT | 1 |
| 4 | 741801 | Electrode | 1 |
| 5 | 743301 | Gasket, Venturi | 1 |



| | | | | |
|-----|-------|---------------|-----|-----------|
| 0 | N/A | RELEASED PART | SED | 2/12/2016 |
| REV | ECO # | DESCRIPTION | BY | DATE |

REVISION HISTORY

| | NAME | DATE | TITLE |
|----------|--------------|-----------|---|
| DRAWN | SED | 2/12/2016 | Prizer-Painter 800 ARLINGTON STREET, READING, PA 19610 SA FRONT 15K BURNER |
| CHECKED | - | - | |
| MODEL | RNB PLATINUM | | |
| MATERIAL | N/A | | |

| | | | |
|---|------|----------|--------------|
| UNLESS OTHERWISE SPECIFIED DIMENSIONS ARE IN INCHES ANGLES ±1.0° DECIMAL ±0.016 FRACTION ±1/32 | SIZE | PART NO. | REV |
| | B | 600085 | 0 |
| FILE: 600085 SA FRONT 15K BURNER.dwg | | | SHEET 1 OF 1 |