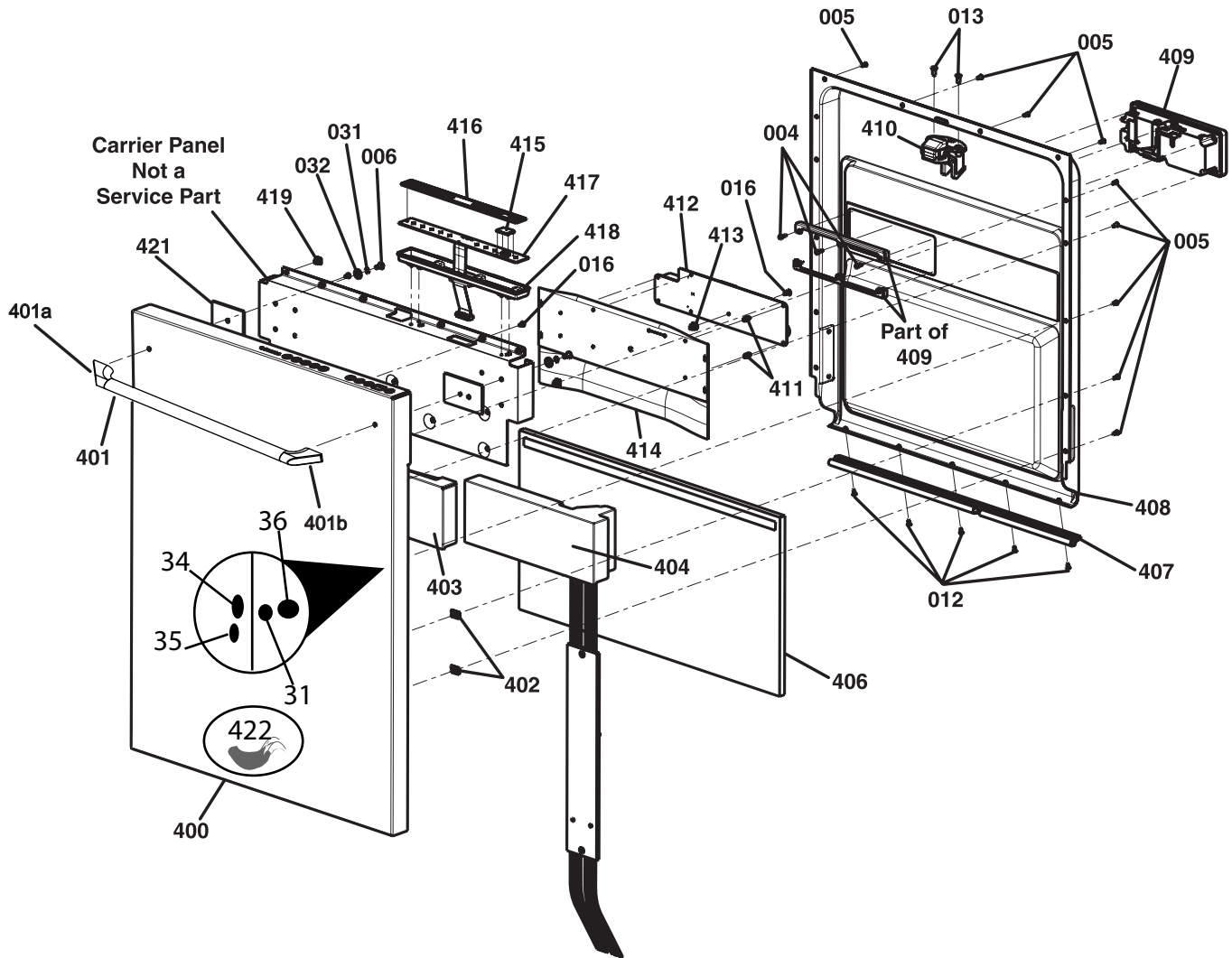



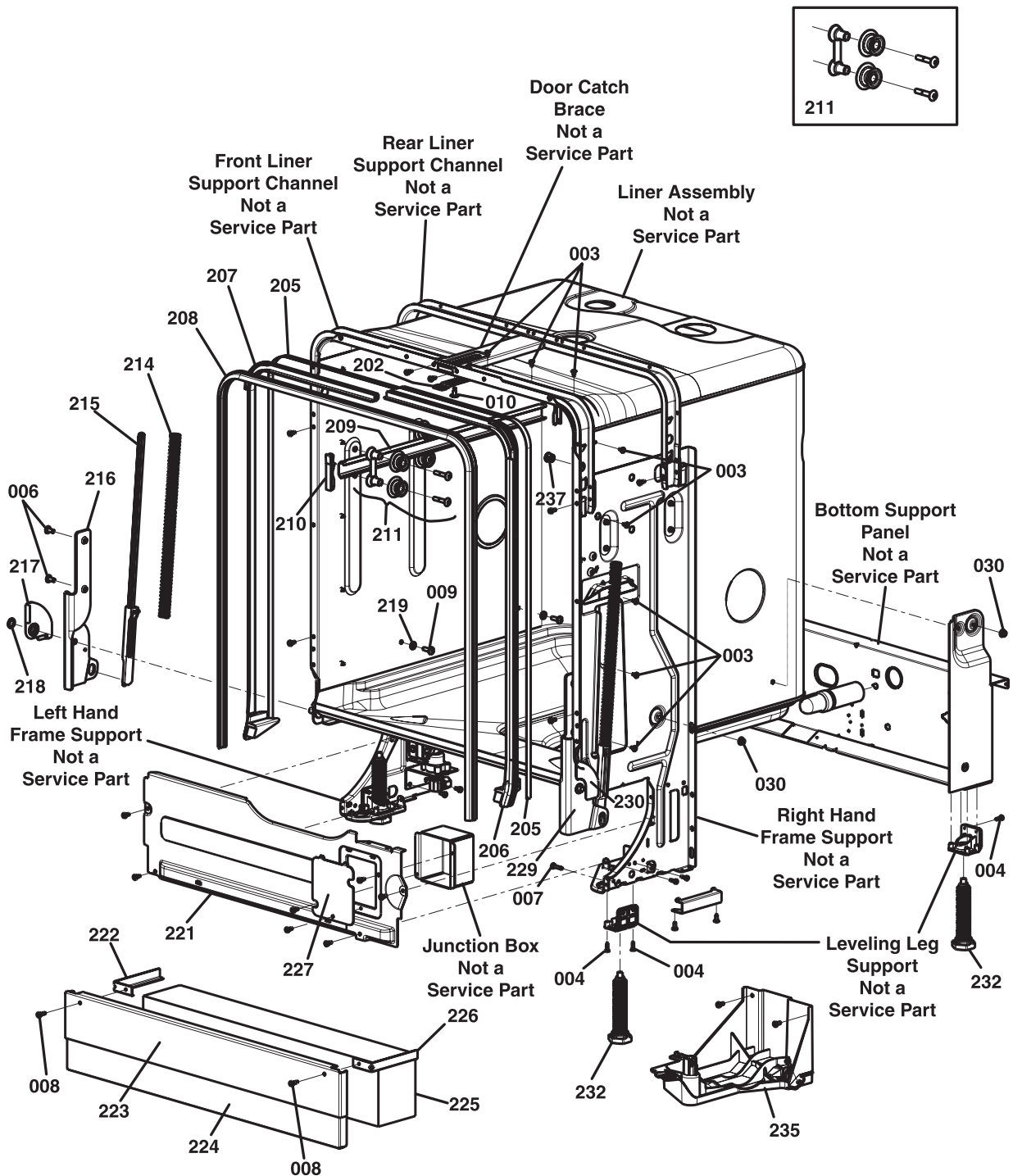
# EDW24S - Door and Control Panel



**DOOR AND CONTROL PANEL**

# EDW24S - Door and Control Panel Parts

Ref #	Part #	Description
004	101348	Screw, Pan HD HI/LO #7-19x1/2
005	101349	Screw, C/Sunk #6HD #8x11AB
006	101350	Screw, Taptite, M5x6 TRUSS HD ZC
012	101351	Screw, CSKAB 6x3/8 PH, S/S
013	101352	Screw, Inox, 5.2x14
016	101353	Screw, Flange HD, #7x12 PH
031	101354	Washer, INT.S/PROOF, 3/16
032	101355	Washer, Flat, 15x5.5x1.2
034	101373	Single Terminal
035	101374	Nut, BSW ZN 3/16
036	101375	Screw, P/HD 3/16x3/8
400	101356	Panel, Door, Top Integrated
401	106235 <sup>1</sup>	Handle, Door <sup>1</sup>
401a	102866-01 <sup>1</sup>	End Cap, Epicure, Chrome <sup>1</sup>
401b	102866-02 <sup>1</sup>	End Cap, Epicure, Chrome <sup>1</sup>
402	101358	Nut, UTYPE, #8AB
403	101359	Brace, Door Stiffening, LH
404	101360	Brace, Door Stiffening, RH
406	101361	Insulation, Door, Lower
407	101362	Seal, Door, Bottom
408	101363	Panel, Door, Inner, Complete
409	101364	Dispenser, w/ Reed Switch
410	101365	Lock, Door Unit
411	101366	Support, Main Controller
412	101367	Board, Main Controller
413	101368	Grommet, 4.8mm
414	101369	Shield, Main Controller
415	101370	Lens, Top Display
416	101371	Panel, Buttons, Elastomer
417	101372	Board, Top Switch
418	103618	Housing, Switch Button
419	103619	Grommet, Carrier Integrated
421	103620	Backing Plate
422	72510CH	Dacor, Logo
-	102325	Wire Harness (Not shown)
<sup>1</sup> Screws needed for Door Handle. (Click note) 		



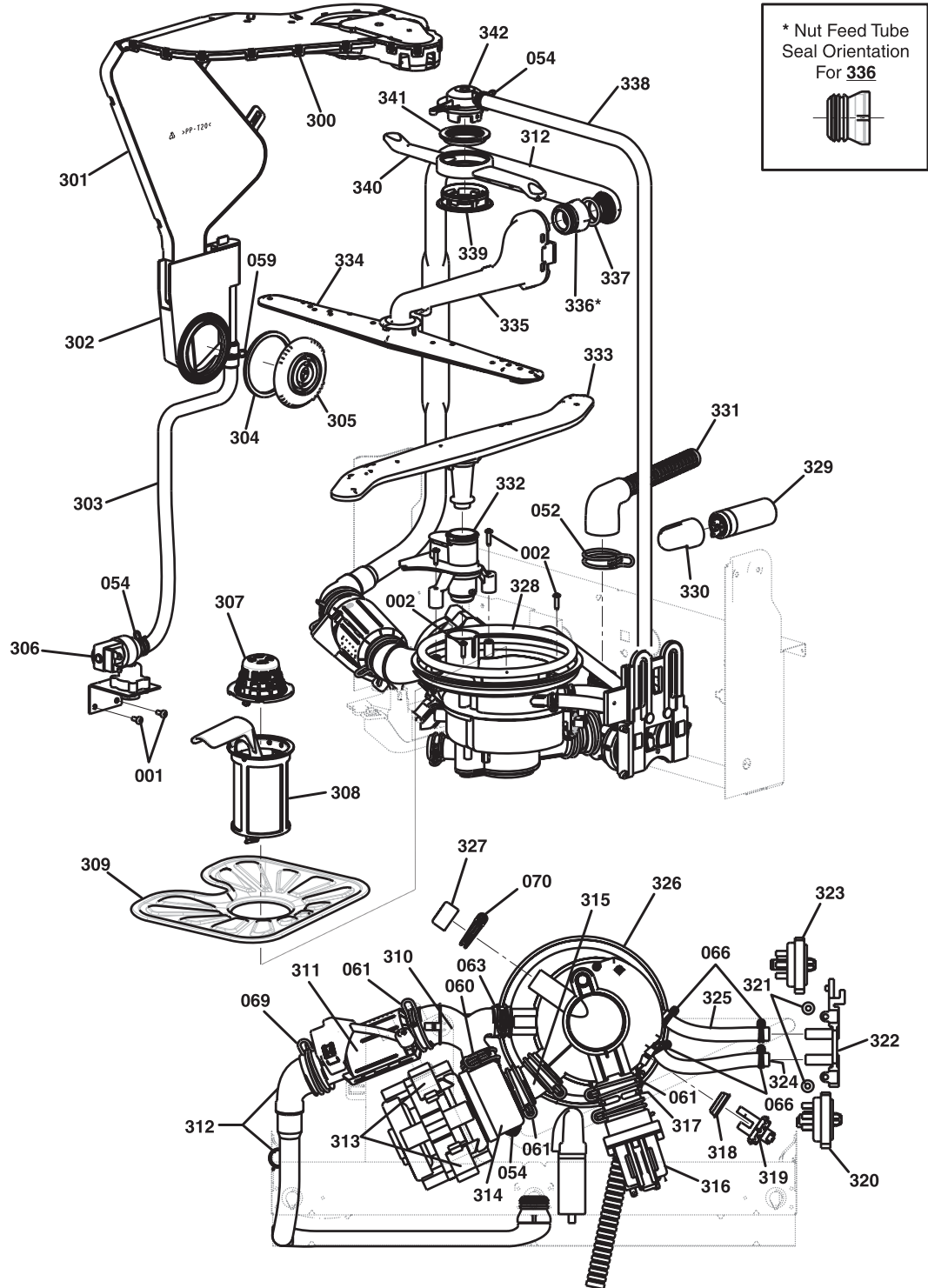
## TUB AND FRAME

# DACOR BUILT-IN DISHWASHER SERVICE MANUAL

## Tub and Frame

Pos. #	Dacor #	Description
001	101376	SCREW, EXTRUDE TITE, M4X10 PN HDPH
003	101377	SCREW, FLANGE HD, #7-1 9X8 HI/LO
004	101348	SCREW, PANHDHI/LO, #7-19 X1/2
006	101350	SCREW, TAPTITE, M5X6 TRUSS HD, ZC
007	101378	SCREW, PHPAN HD, #8X19
008	101379	SCREW, ALKON TT0812, #8X13, BLACK
009	101380	SCREW, TRUSS PHHD, M5X16, S/S
010	101381	SCREW, E4TORX, M5X13 PHHD
030	101382	LOCK NUT, WHIZZY, M5X0.8 HEX
202	101383	CATCH, DOOR
205	101384	SEAL, RETAINER, DOOR SEAL
206	101385	RETAINER, DOOR SEAL, RH
207	101386	RETAINER, DOOR SEAL, LH
208	101387	SEAL, DOOR, BLACK
209	101388	RAIL, UPPER RACK
210	101389	STOP, UPPER RACK RAIL
211	101390	SUPPORT, ROLLER ASSY.
214	101391	SPRING, DOOR HINGE
215	101392	SUPPORT, DOOR SPRING
216	101393	HINGE, DOOR, LH
217	101394	GUARDPAD, DOOR HINGE, LH
218	101395	CLIP, DOOR PIVOT
219	101396	WASHER, SEALING
221	101397	PANEL, FRONT COVER
222	101398	BRACKET, KICK PLATE, LH
223	101399	PANEL, ADJ. KICKPLATE, BLACK, TOP
224	101400	PANEL, ADJ. KICK PLATE, BLACK, BOTTOM
225	101401	INSULATION, KICK PLATE
226	101402	BRACKET, KICK PLATE, RH
227	101403	COVER, JUNCTION BOX
229	101404	HINGE, DOOR, RH
230	101405	GUARD PAD, DOOR HINGE, RH
232	101406	LEG, LEVELING ASSY.
235	101407	SUPPORT, MOTOR/PUMP
237	101408	CONE, DOOR GUIDE

# SECTION 6 - PARTS BREAKDOWN



## MOTORS AND PUMPS

# DACOR BUILT-IN DISHWASHER SERVICE MANUAL

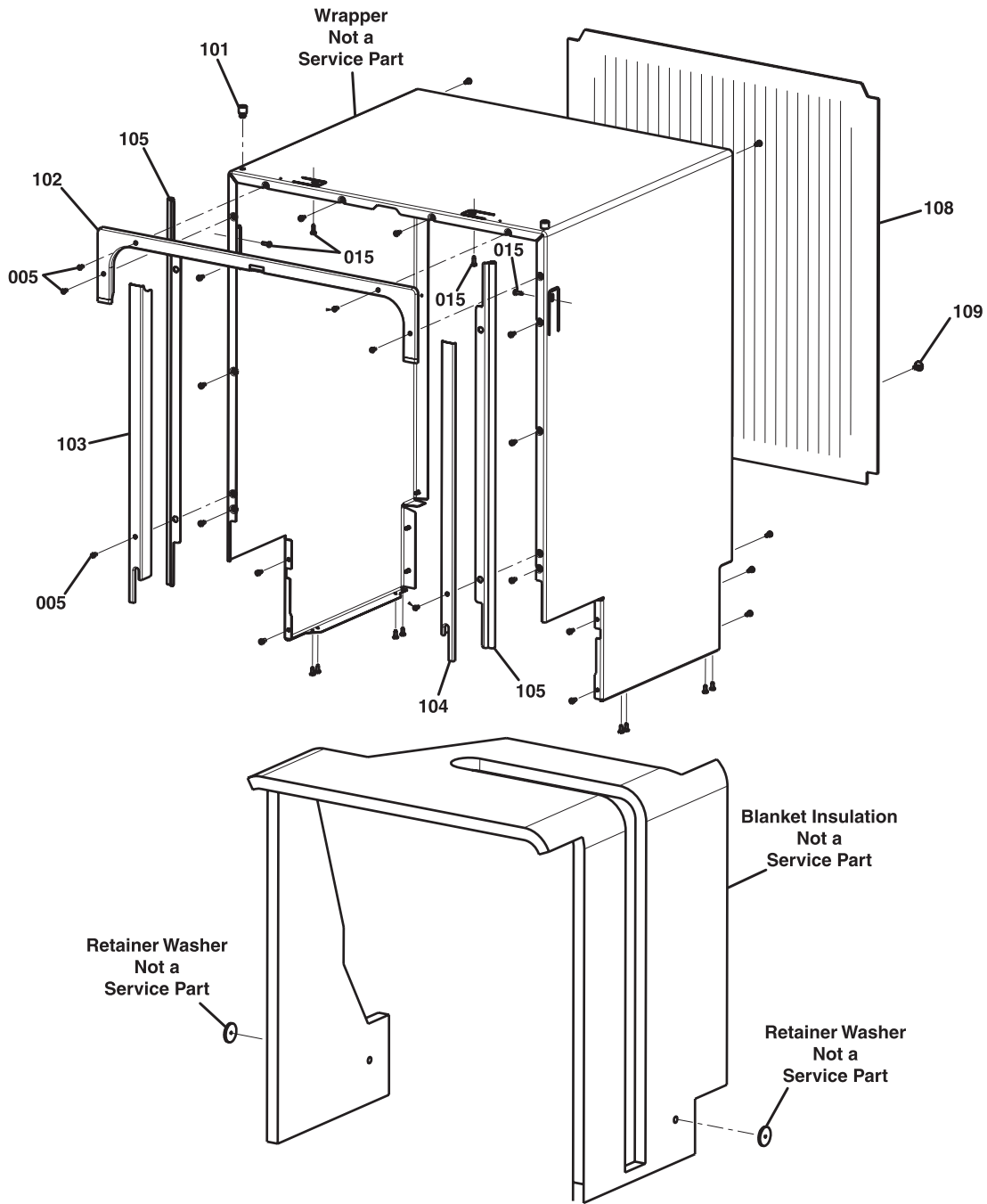
## Motors and Pumps

Pos. #	Dacor #	Description
001	101376	SCREW, EXTRUDETITE, M4X10PNHDPH
002	101409	SCREW, INOX, 4X16 TT
052	101410	CLAMP, DRAINHOSE
054	101411	CLAMP, HOSE, 15.5MM, BLACK
059	101412	CLAMP, HOSE, 17.7MM
060	101413	CLAMP, HOSE, 38MM
061	101414	CLAMP, HOSE, 44MM
063	101415	CLAMP, HOSE, 32MM
066	101416	CLAMP, HOSE, PRESSURE SWITCH
069	101417	CLAMP, HOSE, 47MM, UPPER SPRAY ARM
070	101418	CLAMP, HOSE, 28MM
300	101419	FAN, DRY UNIT, 120V/60HZ
301	101420	DUCT, CONDENSER, COMPLETE
302	101421	INLET, SYPHON BREAK
303	101422	HOSE, SYPHON BREAK
304	101423	GASKET, AIR VENT
305	101424	VENT, AIR
306	101425	VALVE, WATER INLET, 120V/60HZ
307	101426	COVER, FILTER, DRAIN CUP
308	101427	FILTER, MICRO MESH
309	101428	FILTER, PRIMARY, STAINLESS
310	101429	HOSE, PUMP/SUMP
311	101430	ELEMENT, IN-LINE, 1200W, 120V
312	101431	TUBE ASSEMBLY, HEATER, UPPER SPRAY ARM, COMPLETE
313	101432	BRACKET, MOTORMOUNTING
314	101433	PUMP MOTOR, RECIRCULATING, 120V/60HZ
315	101434	HOSE, RECIRC. PUMP
316	101435	PUMP MOTOR, DRAIN, 120V/60HZ
317	101436	HOSE, SUMP/DRAIN
318	101437	SEAL, NTC SWITCH
319	101438	SWITCH, NTC W/ TURBIDITY, 10KO
320	101439	SWITCH, PRESSURE, ULP2, SAFETY
321	101440	SEAL, PRESSURE SWITCH, PORT
322	101441	SUPPORT, PRESSURE SWTCHS
323	101442	SWITCH, PRESSURE, UL, FILL LEVEL
324	101443	TUBE, PRESSURE SWITCH, SAFETY
325	101444	TUBE, PRESSURE SWITCH, P1 LEVEL
326	101445	HOUSING, SUMP

## SECTION 6 - PARTS BREAKDOWN

### Motors and Pumps (continued)

Pos. #	Dacor #	Description
327	101446	PLUG, WATER SOFTENER
328	101447	SEAL, SUMP
329	101448	CAPACITOR, 10 UFUL
330	101449	CAP, CAPACITOR
331	101450	HOSE, DRAIN, 1/2"
332	101451	SUPPORT, SPRAY ARM, LOWER
333	101452	SPRAY ARM, LOWER ASSY
334	101453	SPRAY ARM, UPPER ASSY.
335	101454	TUBE, SPRAY ARM, UPPER
336	101455	NUT, FEED TUBE, COMPLETE
337	101456	SEAL, O-RING
338	101457	HOSE, UPPER SPRAY ARM, TO PUMP
339	101458	NUT LOCK, SPRAY ARM, 3RD LEVEL
340	101459	SPRAY ARM, 3RD LEVEL
341	101460	SEAL, ADAPTOR
342	101461	ADAPTOR, SPRAY ARM, 3RD LEVEL



All Screws Not Labeled Are Item **001** Screws

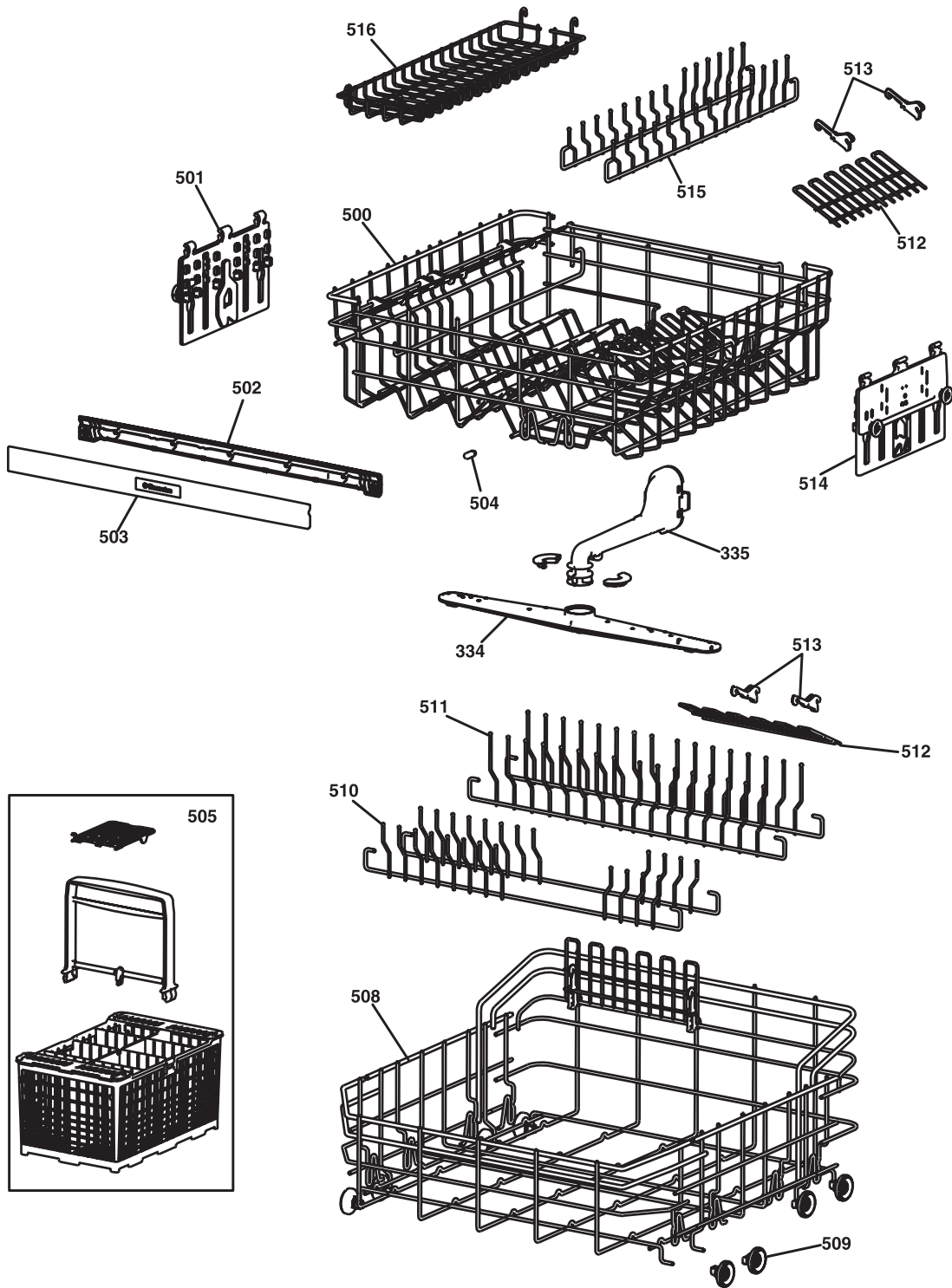
## WRAPPER AND TRIM



**Wrapper and Trim**

---

<b>Pos. #</b>	<b>Dacor #</b>	<b>Description</b>
001	101376	SCREW, EXTRUDE TITE, M4X10 PN HDPH
005	101349	SCREW, C/SUNK #6HD, #8X11AB
015	101462	SCREW, SAB, 8X1/2 PNHD, ZC
101	101463	BUMPER, WRAPPER TOP
102	101464	TRIM, CABINET TOP, STAINLESS
103	101465	TRIM, CABINET SIDE, STAINLESS, LH
104	101466	TRIM, CABINET SIDE, STAINLESS, RH
105	101467	EXTRUSION, SIDE TRIM
108	101468	PANEL, BACK
109	101469	CLIP, BACK PANEL



## RACKS

## SECTION 6 - PARTS BREAKDOWN

### Racks

Pos. #	Dacor #	Description
334	101453	SPRAY ARM, UPPER ASSY.
335	101454	TUBE, SPRAY ARM, UPPER
500	101470	RACK, UPPER ASSEMBLY, COMPLETE
501	101471	ROLLER, EASY LIFT ASSY., LH
502	101472	HANDLE, FRONT, INTERIOR
503	101473	HANDLE, FRONT, EXTERIOR
504	101474	BUMPER, DOOR
505	101475	BASKET, SILVERWARE ASSY
508	101476	RACK, LOWER ASSEMBLY, COMPLETE
509	101477	ROLLER ASSEMBLY, LOWER RACK
510	101478	FENCE, FOLD DOWN, FRONT, LOWER RACK
511	101479	FENCE, FOLD DOWN, REAR, LOWER RACK
512	101480	RACK, CUP, HINGED
513	101481	CLIP, CUP RACK
514	101482	ROLLER, EASY LIFT ASSY., RH
515	101483	FENCE, FOLD DOWN, UPPER RACK
516	101484	BASKET, UTENSIL

# DACOR BUILT-IN DISHWASHER SERVICE MANUAL

## Electrical Diagram

