

Model type:

**C0571GD(X)EX**

Commercial code:

**F023701**

## General notes

### Technical Documentation guidelines

---



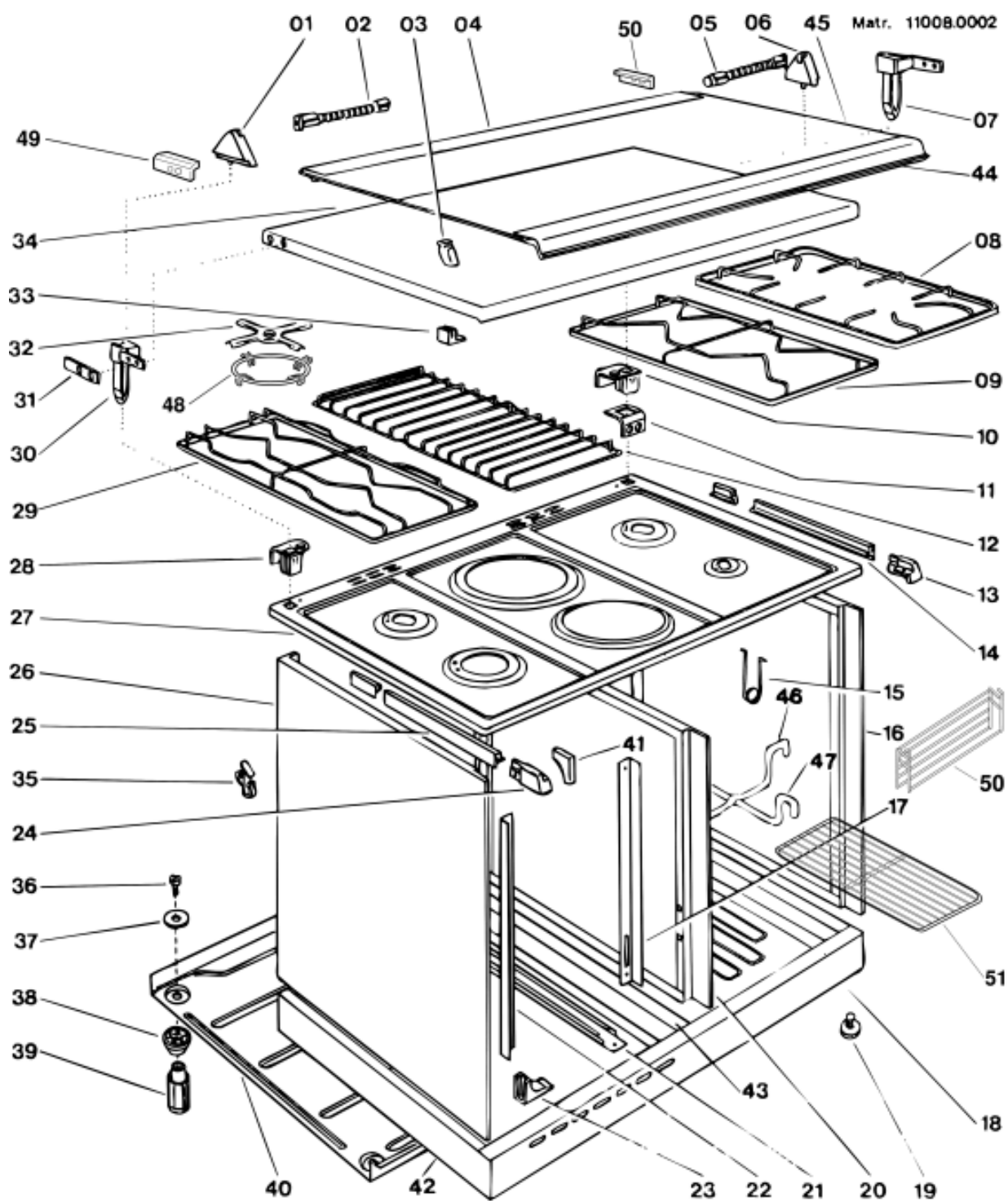
---

You can find herewith some generic information to simplify consulting of technical documentation:

1. Models of same range share the same exploded views, which report the richest set of spare parts: generally, a model does not necessarily have a related spare part for each particular shown on exploded views.
2. Some spare parts can not be represented directly on the exploded views (instruction booklets, specific kit, etc...). You can find those codes in the spare parts list with the same reference of particular where spares are installed or with references 099, 999. Instruction booklets, once managed, appear with 000 reference.
3. On the higher right site of each exploded view there is a serial number which indicates the beginning of the production of certain range: some models might have more than an exploded view for a given category, each distinguished by a different serial no. and linked to another spare parts list. In this case, serial no. is required to supply the right spare part code. Exploded view to be considered is the one with a more recent serial no. but previous than the one of the model that needs assistance.
4. Exploded views might require further updates even after publishing. Addition of new spares will go on following the already existing numeration references. Revision number of an exploded view is shown into last four digits of serial number into upper right hand corner.
5. The spare parts list associated to an exploded view shows related codes of spares managed for a certain model; for each spare part other informations are available:  
  
REF: reference no of spare into a table; SUBSTITUTE: list of spare(s) which can replace a code but that keeps same functional characteristics  
  
INDUSTRIAL CODE: list of variables of a model (shown into model label) where such spare is used; NOTICE: code of information(s) to refer to complete technical intervention, track for changes or to find correct spare part code.
6. Some notices, into a same section are generic therefore cannot be directly linked to a spare part. In order to assist a model in the best way as possible, it is helpful to pay attention to all notices and constantly verify documentation updates
7. Technical documentation cover shows model name and its commercial codes

4160620

Exploded views



4160620

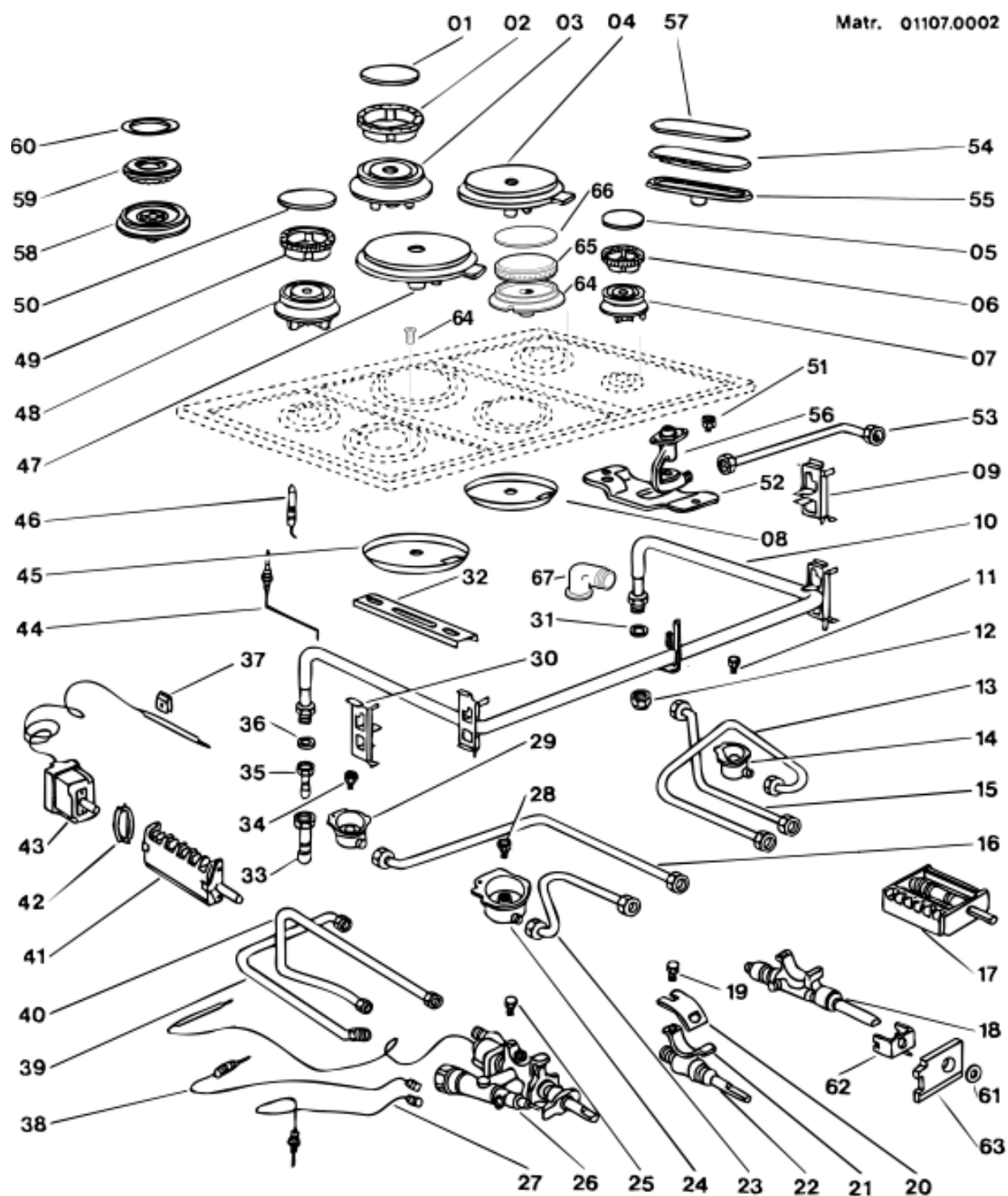
4160620

Spare parts list

Ref.	Code	From	To S/N	Substitute	Description	Notice	Industrial
000	C00037404				user instructions booklet maxi		
001	C00036435				cover support sx 54-90 en		
002	C00076153			1 x C00036426	hinge sx for glass cover 90		
003	C00076226			1 x C00036437	rubber buffer (glass cover)		
004	C00040088				glass cover with lat. profil g84c		
005	C00076156			1 x C00036425	hinge dx for glass cover 90		
006	C00066463				cover support dx 54 s2000		
008	C00076553				grid for double crown burner		
009	C00074646				black enamel grid		
012	C00033404				chromed grid en.		
013	C00036431				front terminal right 54-90 en		
014	C00036429				fire-screen profile right 54-90 en		
016	C00033459				side panel 57 inox dx		
024	C00036433				front terminal left 54-90 en		
025	C00036430				fire-screen profile left 54-90 en		
026	C00033460				side panel 57 inox sx		
027	C00037409				working table 90 en. inox 4+c		
032	C00064003				reducing grid - pan grids c60		
037	C00037385				reinforcement washer for foot		
038	C00076160			1 x C00037386	foot fastening black		
039	C00076161			1 x C00037389	black foot body		
048	C00058280			1 x C00042679	reducing grid 'star'		

4160710

Exploded views



4160710

4160710

Spare parts list

Ref.	Code	From	To S/N	Substitute	Description	Notice	Industrial
001	C00032428				burner cap - large burner black		
002	C00076165			1 x C00027167	large flame-splitter		
003	C00076166			1 x C00023997	queimador rapido		
005	C00032430				burner cap - small burner black		
006	C00076167			1 x C00027179	ausiliar.flame splitter		
010	C00043601				distributing pipe u 90x57 5+0		
013	C00076170			1 x C00033381	feed pipe front burners dx		
014	C00076171			1 x C00030706	burner cup - small burner		
015	C00076172			1 x C00033382	supply tube for dx medium burner		
016	C00076173			1 x C00033383	supply tube for sx medium burner		
018	C00066002			1 x C00046673	tap with valves by-pass kit 30/100		
018	C00076174			1 x C00045381	tap with valves 0.41		
018	C00076526				tap with valves		
020	C00076175			1 x C00044980	fixing bracket		
020	C00076176				fixing bracket		
022	C00076177			1 x C00046673	thermostat with valve0.30		
023	C00076178			1 x C00017439	feed pipe front burners sx		
024	C00076179			1 x C00030708	cup for large burner		
026	C00040118				one-way valve thermostat x bridle		
027	C00076222			1 x C00028639	thermocouple l=1200		
028	C00076280				kit injector gas metano 'star'		
029	C00076182			1 x C00030707	burner cup - medium burner		
035	C00056384			1 x C00121674	liquid gas pipe		
036	C00010506				sealing washer - gas elbow/pipe		
039	C00021033				oven feeding pipe		
040	C00040112				maxi oven feeding pipe		
044	C00030732				thermocouple r450		
046	C00018102			1 x C00087386	spark ignition plug		
046	C00028642				spark plugs grill + nut		
046	C00061930			1 x C00025319	spark plugs+ cable		
048	C00076189			1 x C00030726	burner base - medium burner		
049	C00076190			1 x C00027172	medium flame splitter pig iron		
050	C00032429				burner cap - medium burner black		
052	C00034812				burner support		
053	C00076528				feed pipe for fishburner		

4160710

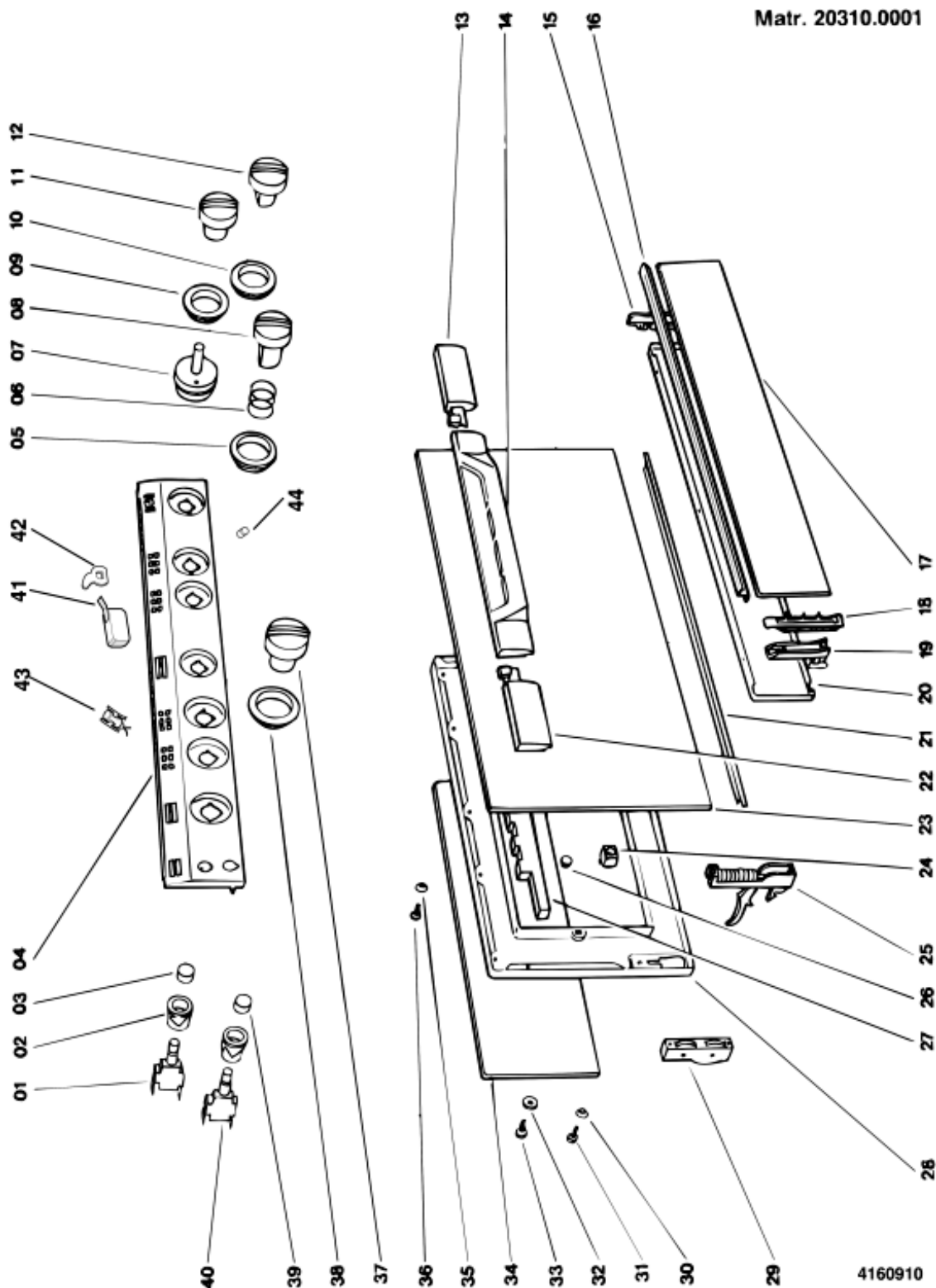
Spare parts list

Ref.	Code	From	To S/N	Substitute	Description	Notice	Industrial
056	C00027728				large burner support		
058	C00039929				safety ultrarapid ignition venturi		
059	C00034818				flame splitter ultra rapid		
060	C00034813				burner cap - double burner		

4160910

Exploded views

Matr. 20310.0001





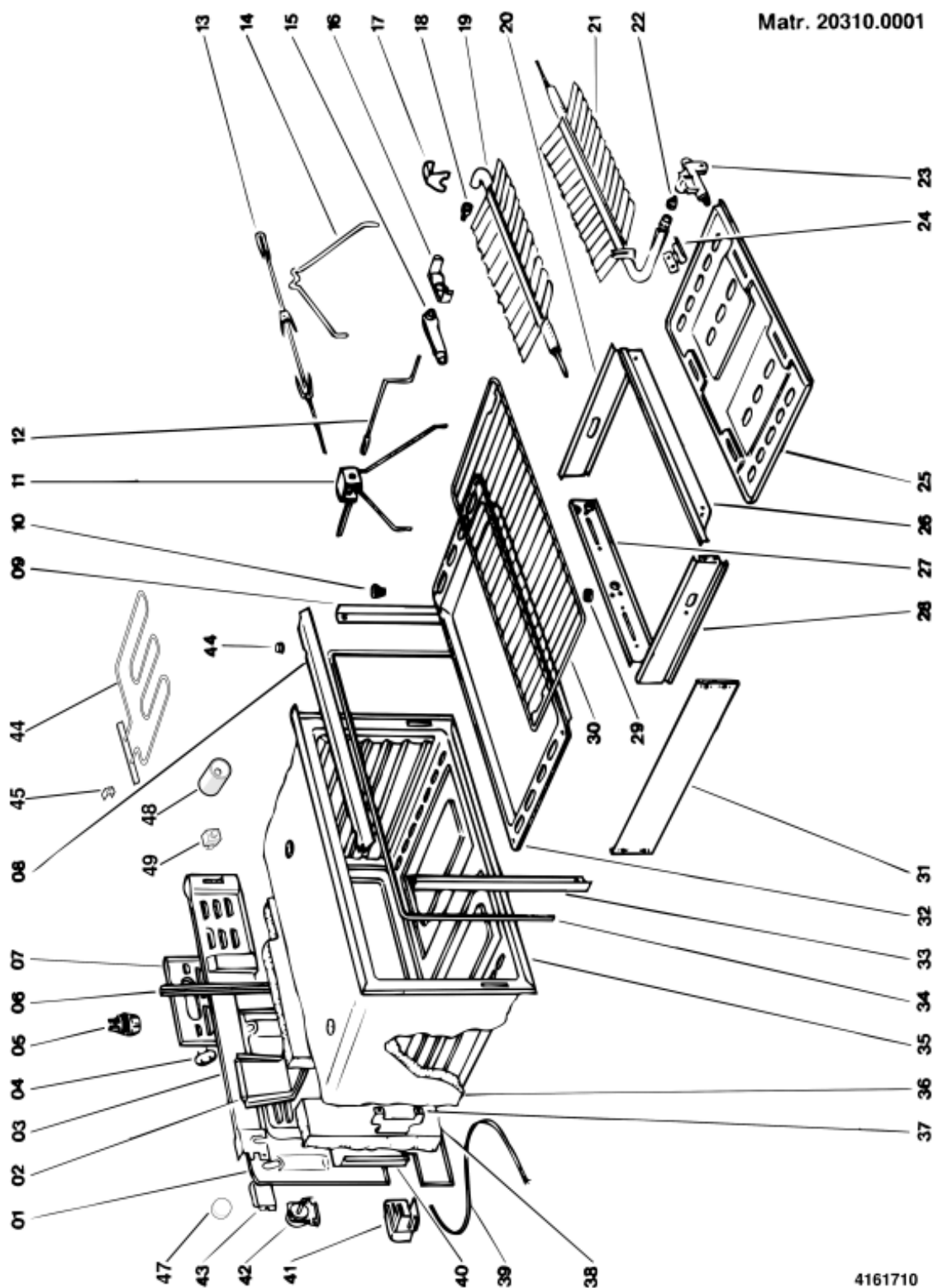
4160910

Spare parts list

Ref.	Code	From	To S/N	Substitute	Description	Notice	Industrial
001	C00074265			1 x C00033335	lamp switch		
002	C00074266			1 x C00040109	switch support		
003	C00040111				maxi oven light - black turnspit		
004	C00040108				dashboard g84c g8 ex		
006	C00076194			1 x C00016035	knob disc spring		
007	C00052527				minute timer d = 6mm		
009	C00058048				knob disc timer black		
010	C00040084				knob disc gas burners black		
011	C00058047				knob timer black d=6mm		
012	C00040081				knob gas burners black		
013	C00040105				handle terminal dx oven maxi		
014	C00040115				maxioven door handle pipe		
015	C00076195			1 x C00037373	grey stopper door/inner-door sv dx		
017	C00037368				inox dishwarmer door maxi		
018	C00076198			1 x C00037374	grey stopper door/inner-door sv sx		
019	C00076199			1 x C00022741	hinge dishwarmer door		
020	C00037369				black warming-drawer inner-door		
022	C00040106				handle terminal sx maxi oven		
023	C00040107				maxi oven door glass		
025	C00037377				hinge for oven door maxi		
026	C00030757				gum oven door		
027	C00016062				handle insulating material		
028	C00040116				oven inner door maxi 2v. black		
029	C00037388				hinge saupporting piece maxi		
034	C00042685				internal glass for oven door		
037	C00040096				knob gas oven black		
038	C00076592				knob disc for		
039	C00074267			1 x C00040110	cap for ignition switch		
040	C00074264			1 x C00045793	pushbutton		
041	C00040100				handle spacer oven maxi		

4161710

Exploded views



4161710

Spare parts list

Ref.	Code	From	To S/N	Substitute	Description	Notice	Industrial
002	C00033357				chimney		
005	C00015910				oven lamp e14 220v 15w		
005	C00038035				oven lamp assembly		
008	C00076207			1 x C00021015	knob deflector		
011	C00076209			1 x C00021021	turnspit support with gear		
013	C00040117				spit rodmaxi		
014	C00076211			1 x C00021020	turnspit support		
015	C00076212			1 x C00026277	gas injector body		
016	C00025311				support for gas injector body		
017	C00021006				fixing bracket		
019	C00033177				grill burner		
021	C00037395			1 x C00033176	oven burner maxi		
025	C00021016				bottom		
030	C00076216			1 x C00021066	oven grid		
032	C00031854				drip tray black maxi		
034	C00076219			1 x C00037372	oven gasket maxi		
035	C00037394				black oven x maxi en		
036	C00076220				gas oven insulation		
037	C00033569				moulding fissing oven en		
037	C00076186			1 x C00015560	flat spring retainer-thermostat		
038	C00076221			1 x C00037393	back insulating material oven		
039	C00076223			1 x C00035727	mains supply cable 6a 3x0.75		
041	C00076224			1 x C00039460	terminal block 2 p+t		
042	C00008563				turspit motor-reducer 110/220v		
043	C00031160				ignition transf. dischar. 7p.		

## Notices

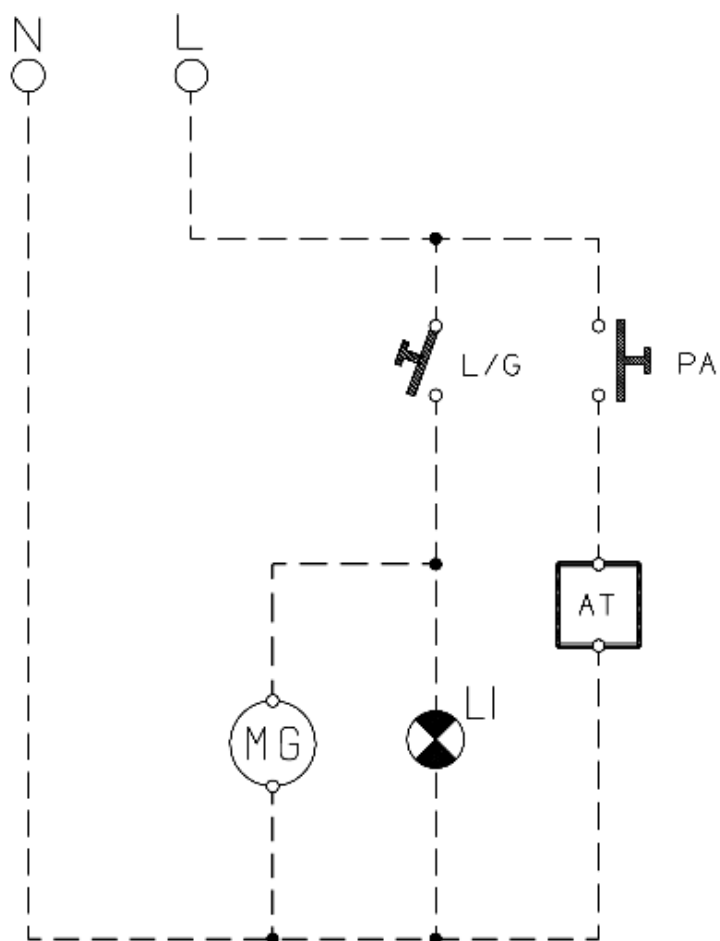
n1015015: Method to remove the external glass of the oven door.

---

On all built-in cooker and oven models, when it is necessary to remove the glass from the oven door handle (to avoid breaking the handle) the glass is not removed upwards, but should be oscillated towards the right and left until the two silicone points, that unite the glass to the handle, detach.

## Electric schemes and links

Cod. 416057b



L/G: INTER. LUCE/GIRARROSTO    MG : GIRARROSTO  
LI : LUCE FORNO    PA : PULSANTE ACCENSIONE  
AT : ACCENSIONE ELETTRONICA

4150999A

## Legend

Legend: 416057b

AE	Ignition transformer	PE	Plate electric (Normal and Rapid)
AT	Ignition transformer	PEL	Wall socket
CF	Oven commutator	PIF	Cooking programmer
CP	Plate commutator(Normal end Rapid)	POT	Thermostated potentiometer
CT	Plate commutator(Automatic)	PT	Termoprotector
DC DR	Double Knob double crown burner control card	PTC	Thermostated sensor
EV	Electro-Valve	RCE	Grill heating element ex- ternal
FC	End of cooking programmer	RCI	Grill heating element internal
FRONT	Daschboard	RE	Energy regulator
I/LF	OVEN LIGHT SWITCH	RF	Oven lower heating element
I/LF-MG	OVEN LIGHT SWITCH + ROTISSERIE	RG	Grill heating element
I/MG	TURNSPIT SWITCH	RG COM	Grill heating element un- ion
IL	Knobs' Lighting	RV	Heating element ventilated oven
ILG	Lamp switch turnspit	SA	Boiler operating led
IT	Thermostated switch	SB	Thermostated burner led
L	Line (Feed)	SF	Warning light working
LF	Oven light	SO	Probe temperature
LI	Oven light	SP	Operating Indicator Light for the Plate
M	Suction motor handle	ST	Warning light thermostat
MG	Turnspit motor	TH	Thermostat fixed
MO	Terminal board	TH2	Thermostated burner cooling
MUFF	Oven	THR	Adjustable thermostat
MV	Fan motor	TP	Termoprotector
N	Neutral (Feed)	TRAV	Support terminal board
PA	Ignition push-button	TRM	Thermostated burner control card