

Model type:

ARWDF129SNA

Commercial code:

F063064

General notes

Technical Documentation guidelines

You can find herewith some generic information to simplify consulting of technical documentation:

1. Models of same range share the same exploded views, which report the richest set of spare parts: generally, a model does not necessarily have a related spare part for each particular shown on exploded views.
2. Some spare parts can not be represented directly on the exploded views (instruction booklets, specific kit, etc...). You can find those codes in the spare parts list with the same reference of particular where spares are installed or with references 099, 999. Instruction booklets, once managed, appear with 000 reference.
3. On the higher right site of each exploded view there is a serial number which indicates the beginning of the production of certain range: some models might have more than an exploded view for a given category, each distinguished by a different serial no. and linked to another spare parts list. In this case, serial no. is required to supply the right spare part code. Exploded view to be considered is the one with a more recent serial no. but previous than the one of the model that needs assistance.
4. Exploded views might require further updates even after publishing. Addition of new spares will go on following the already existing numeration references. Revision number of an exploded view is shown into last four digits of serial number into upper right hand corner.
5. The spare parts list associated to an exploded view shows related codes of spares managed for a certain model; for each spare part other informations are available:

REF: reference no of spare into a table; SUBSTITUTE: list of spare(s) which can replace a code but that keeps same functional characteristics

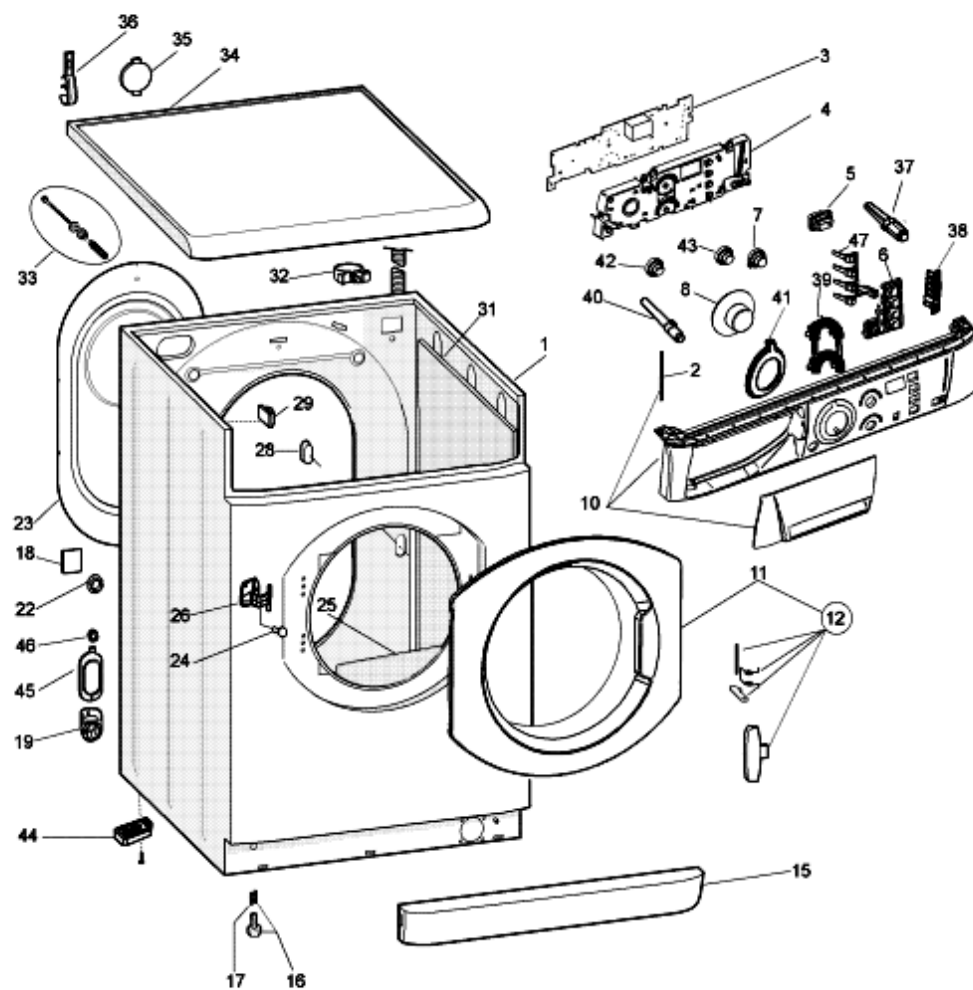
INDUSTRIAL CODE: list of variables of a model (shown into model label) where such spare is used; NOTICE: code of information(s) to refer to complete technical intervention, track for changes or to find correct spare part code.
6. Some notices, into a same section are generic therefore cannot be directly linked to a spare part. In order to assist a model in the best way as possible, it is helpful to pay attention to all notices and constantly verify documentation updates
7. Technical documentation cover shows model name and its commercial codes

1140140C

Exploded views

Matr. 71015.0001

DIGIT



1140140C

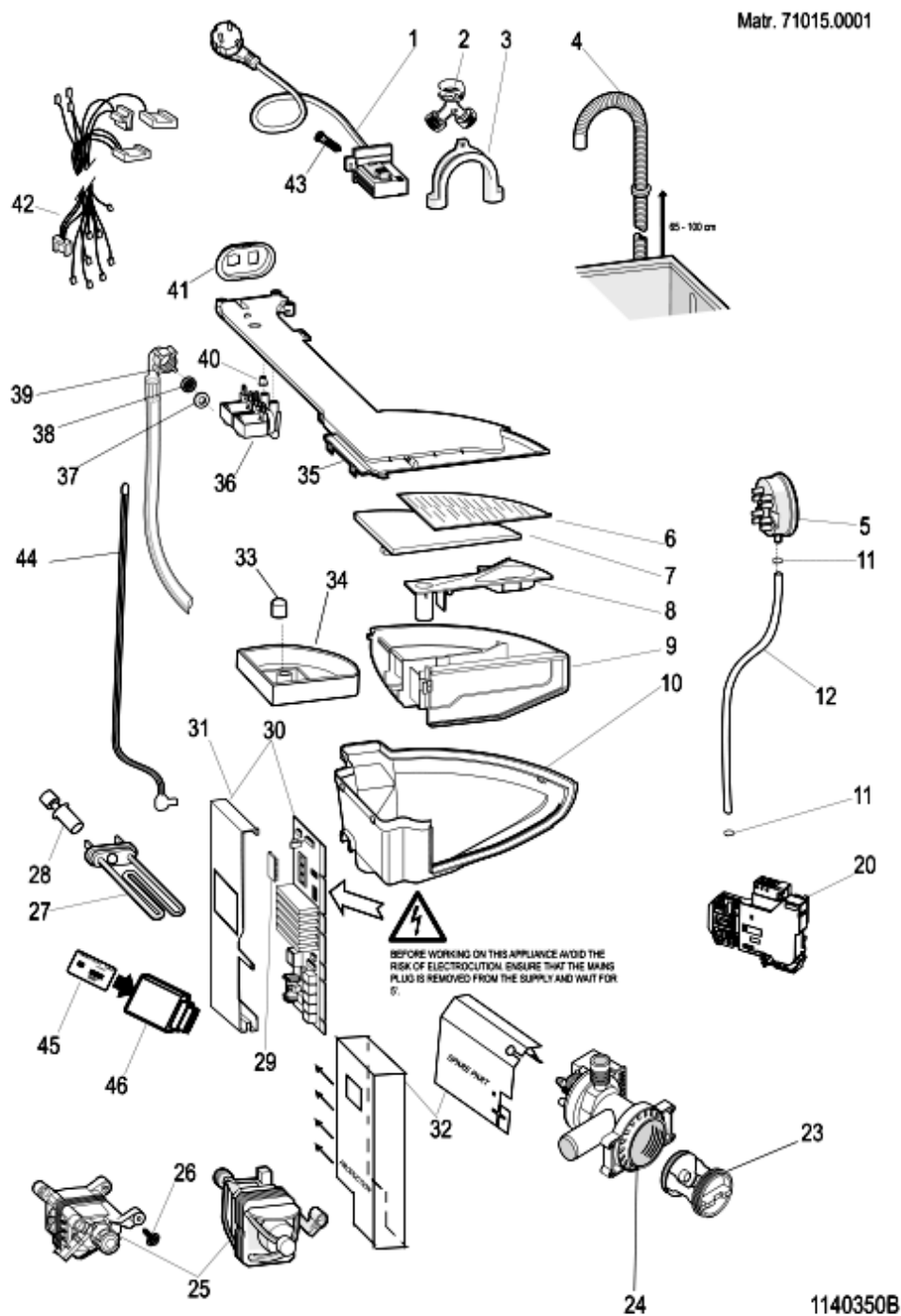
1140140C

Spare parts list

| Ref. | Code | From | To S/N | Substitute | Description | Notice | Industrial |
|------|-----------|------|--------|---------------|------------------------------------|--------|------------|
| 001 | C00115663 | | | | cabinet silver evo ii standard | | |
| 002 | C00091882 | | | | pivot pin drawer front 106.5x5 | | |
| 003 | C00262638 | | | 1 x C00277184 | control digit arsf | | |
| 004 | C00266911 | | | | support display module | | |
| 005 | C00278488 | | | | pushbutton silver start/pause usa | | |
| 006 | C00278580 | | | | option button (5) | | |
| 007 | C00278577 | | | | temperature pushbutton silver | | |
| 008 | C00281701 | | | | wash timer knob .prne16 digit | | |
| 010 | C00281700 | | | | control panel & handle arwdf 129 | | |
| 011 | C00281699 | | | | door frame+glass ariston greywd | | |
| 012 | C00278327 | | | | door handle kit - gray ariston usa | | |
| 015 | C00081310 | | | | plinth grey 2 | | |
| 016 | C00087084 | | | | foot | | |
| 017 | C00083828 | | | | foot spring (11x8.5mm) | | |
| 019 | C00064755 | | | | drain hose collar | | |
| 022 | C00065871 | | | | blanking plug | | |
| 023 | C00278387 | | | | rear cover - grey | | |
| 024 | C00256725 | | | | screw testfer m4 x 16 mm | | |
| 026 | C00254619 | | | | hinge | | |
| 028 | C00065185 | | | | bolt m4,5 x 8 | | |
| 028 | C00143911 | | | | blanking plate-rear(test plug) ul | | |
| 029 | C00141387 | | | | cable clamp hose | | |
| 033 | C00145769 | | | | transit bolt | | |
| 034 | C00143924 | | | | top silver+ plate ariston | | |
| 036 | C00046667 | | | | wiring stop | | |
| 036 | C00064550 | | | | drain hose holder | | |
| 037 | C00255691 | | | | start lens | | |
| 038 | C00255147 | | | | light guide status | | |
| 039 | C00255695 | | | | lens (temp./ spin) | | |
| 040 | C00255704 | | | | on/off neon lens | | |
| 041 | C00255689 | | | | programme knob lens | | |
| 042 | C00278575 | | | | pushbutton on/off silver arsf | | |
| 043 | C00281702 | | | | spin speed pushbutton silver | | |
| 047 | C00264223 | | | | light guide status digit ar/hp | | |
| 099 | C00012687 | | | | self-tapping screw hi-lo 3,5x13 | | |

1140350B

Exploded views



1140350B

Spare parts list

| Ref. | Code | From | To S/N | Substitute | Description | Notice | Industrial |
|------|-----------|------|----------|---------------|------------------------------------|--------|------------|
| 001 | C00276595 | | | | supply cable usa | | |
| 003 | C00019902 | | | | plastic -u- to make drain hose | | |
| 004 | C00091775 | | | | drain hose to sink | | |
| 005 | C00257922 | | 10205... | 1 x C00284971 | pressure switch 1 l. 85-60 ul | | |
| 008 | C00046154 | | | | additive cover | | |
| 009 | C00046148 | | | 1 x C00281253 | soap dispenser drawer (rotary) | | |
| 010 | C00276598 | | | | dispenser body usa ul | | |
| 011 | C00092412 | | | | hose clamp | | |
| 012 | C00144077 | | | | pipe pressostat l= 540mm. evo ii | | |
| 020 | C00065185 | | | | bolt m4,5 x 8 | | |
| 020 | C00257924 | | | | thermal lock ul | | |
| 023 | C00045023 | | | | filter handle | | |
| 023 | C00045025 | | | | filter seal | | |
| 023 | C00045027 | | | | pump filter kit | | |
| 024 | C00112504 | | | | self cleaning pump 120v 60hz | | |
| 025 | C00257889 | | | | motor three phase (stator 40) vpl | | |
| 026 | C00094744 | | | | screw locking motor/tub | | |
| 027 | C00112437 | | | | hole for heating element | | |
| 028 | C00083915 | | | | thermistor ntc | | |
| 030 | C00254529 | | | | module three phase + eeprom | | |
| 031 | C00115069 | | | | support cover 3 f | | |
| 031 | C00115070 | | | | bracket for module 3 f | | |
| 032 | C00293617 | | | | protecting module (mylar) america | | |
| 033 | C00046157 | | | | stopper detergent container | | |
| 034 | C00046152 | | | 1 x C00287239 | additive container | | |
| 035 | C00276599 | | | | hopper cover 2e 3u r 2.5 wm usa | | |
| 036 | C00110452 | | | | electrovalve 1way 5,5lt hot rst2.5 | | |
| 036 | C00116117 | | | | 3-way electrovalve 1e-3u 7 l | | |
| 037 | C00005572 | | | | sealing washer-mains inlet hose | | |
| 038 | C00005781 | | | | inlet hose filter | | |
| 039 | C00112930 | | | | inlet hose with usa | | |
| 040 | C00064534 | | | | seal - dispenser to valve | | |
| 041 | C00257907 | | | | electrovalve support 2 ev usa | | |
| 043 | C00092348 | | | | self-scraping screw 3,5x8 | | |
| 044 | C00256761 | | | | emergency door release strap | | |

1140350B

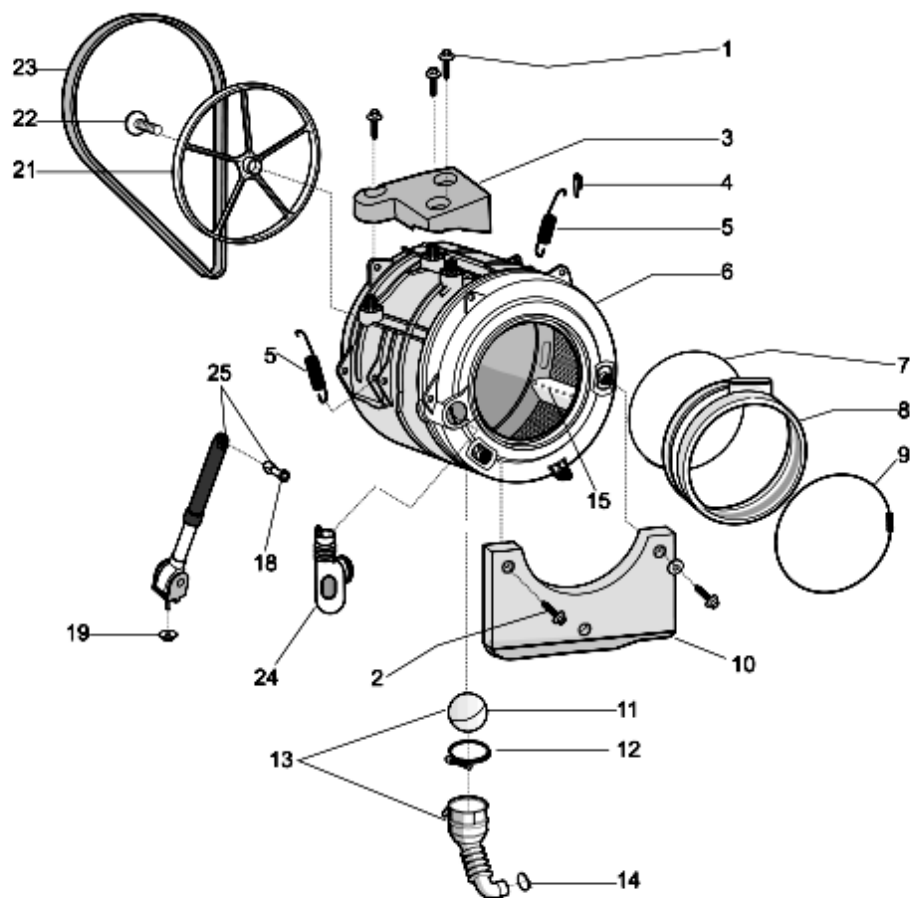
Spare parts list

| Ref. | Code | From | To S/N | Substitute | Description | Notice | Industrial |
|------|-----------|------|--------|------------|----------------------------------|--------|------------|
| 045 | C00281703 | | | | card arwdf129s(na) 8kb sw | | |
| 046 | C00272306 | | | | smart reader for card 8kb 32kb + | | |
| 099 | C00257890 | | | | supressor filter ul | | |

1180270B

Exploded views

Matr. 70803.0001



1180270B

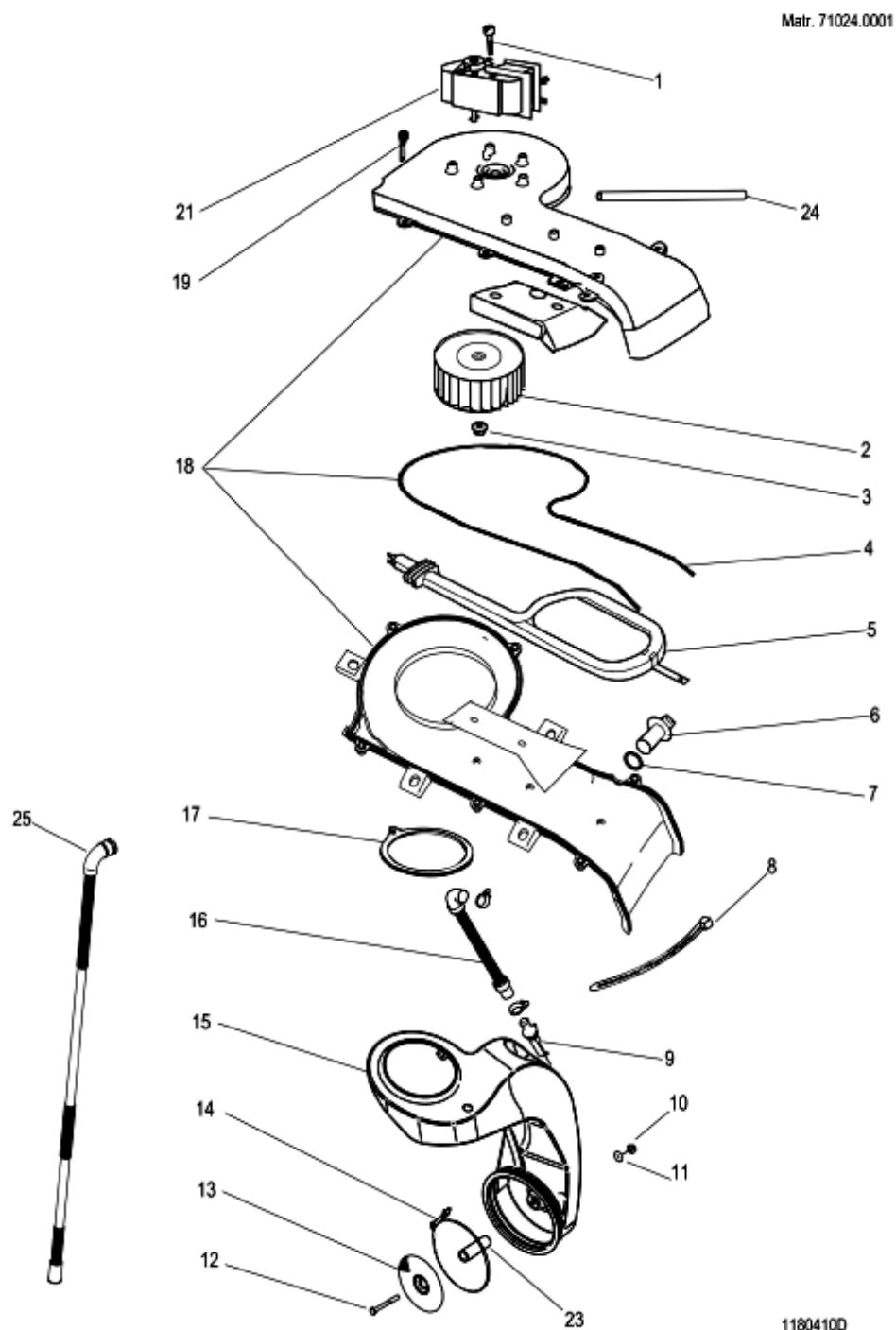
1180270B

Spare parts list

| Ref. | Code | From | To S/N | Substitute | Description | Notice | Industrial |
|------|-----------|------|--------|--------------------------------|-----------------------------------|----------|------------|
| 001 | C00194612 | | | | screw larger diameter 11.3x50 kit | n4011c00 | |
| 002 | C00194611 | | | | screw.pl28 9.5x50 tmtfr t40 | n4011c00 | |
| 003 | C00255400 | | | | upper counterweight vpl 9 kg wdl | | |
| 004 | C00141682 | | | | anchorage pad - suspension | | |
| 005 | C00145754 | | | | suspension spring - tank | | |
| 006 | C00259977 | | | | tank plastic pl 52l wd usa | | |
| 007 | C00092155 | | | | door seal- rear retainer | | |
| 008 | C00259981 | | | | door bellows seal wd vpl | | |
| 009 | C00092156 | | | | door seal retainer front | | |
| 010 | C00145205 | | | | front counterweight 11,4 kg | | |
| 011 | C00092172 | | | | ball oko evo ii | | |
| 012 | C00094908 | | | | hose clamp | | |
| 013 | C00274662 | | | | outlet hose | | |
| 014 | C00092411 | | | 1 x C00094908 | hose clamp | | |
| 015 | C00064789 | | | 1 x C00268109 | lifter - extractable | | |
| 018 | C00280757 | | | | plastic expansion peg new | | |
| 019 | C00271652 | | | | nut romob m6x20x1,5 | | |
| 021 | C00199343 | | | | drum pulley d=280 mm h=20 mm | | |
| 022 | C00051739 | | | 1 x C00064786 1 x C00143260 | m8 x 20 tefl. 10.9 screw | | |
| 023 | C00119126 | | | | belt 1201 - 1198 j6 | | |
| 024 | C00255405 | | | | hose dispenser to tank vp-wd | | |
| 025 | C00140744 | | | | shock absorber 100 n kit | | |

1180410D

Exploded views



1180410D

Spare parts

list

| Ref. | Code | From | To S/N | Substitute | Description | Notice | Industrial |
|------|-----------|----------|----------|---|----------------------------------|----------|------------|
| 001 | C00257959 | | | | screw amsp m3.5x35 t.e. | | |
| 002 | C00255435 | | | | blower fan for motor wd vpl | | |
| 003 | C00032972 | | | | blower fixing nut | | |
| 004 | C00255437 | | | | blower manifold seal vpl | | |
| 005 | C00257859 | | | | dryer heating element 120v | | |
| 006 | C00290251 | | | | thermistor ntc epcos wd | | |
| 007 | C00255434 | | | | o-ring d= 8.75 wd vpl | | |
| 008 | C00255718 | | | | hose clamp | | |
| 009 | C00032845 | | | | restrictor seat | | |
| 010 | C00080960 | | 00221... | | self blocking nut m5 | n4211c00 | |
| 011 | C00097378 | | 00221... | | connection gasket | n4211c00 | |
| 012 | C00259997 | | 00221... | | bolt m5x55 te inox430 x wd vpl | n4211c00 | |
| 013 | C00143949 | | 00221... | | lint filter | n4211c00 | |
| 013 | C00280633 | 00222... | | | steam filter new | n4211c00 | |
| 014 | C00080774 | | | | hose clamp | | |
| 015 | C00255440 | 00222... | | | steam condenser vpl | n4211c00 | |
| 015 | C00280826 | | 00221... | | steam condenser vpl | n4211c00 | |
| 016 | C00080769 | | | | hose electrovalve condenser | | |
| 017 | C00255433 | | 01211... | | seal - condenser / tank vpl | | |
| 017 | C00284582 | 01212... | | | seal - condenser / tank vpl | | |
| 018 | C00268332 | | | 4 x C00289755 1 x C00289760 1 x C00289764 1 x C00290385 1 x C00290386 | blower manifold kit vpl 52 lt | | |
| 018 | C00286406 | | | | screw plast 9.5x25 tc-t30 | | |
| 019 | C00054790 | | | | screw trilob m5 x 16 tcb t.e. st | | |
| 021 | C00110434 | | | | dryer fan motor 115v.60hz | | |
| 023 | C00255439 | | 00221... | | spacer condenser | n4211c00 | |
| 099 | C00115565 | | | | screw m8x30 t30 | | |

Notices

n4211c00: INTRODUCED NEW LINTER FILTER

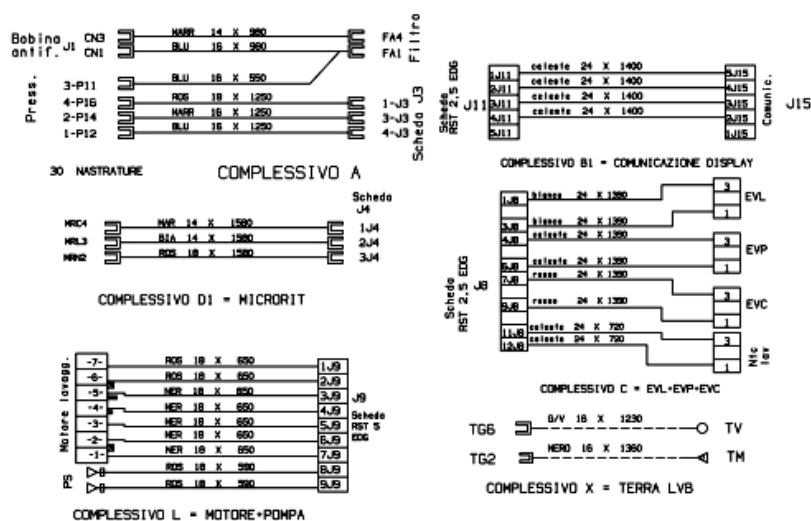
When the pre-modification items are no longer available, all new parts will have to be ordered and replaced.

When replacing the original “Steam Condenser”

It may also be necessary to fit a new “Restrictor Seat” if the original cannot be re-used.

Electric schemes and links

Cod. 16002090200



16002090200

Legend

Legend: 16002090200