

Model type:

ARW XF129WNA

Commercial code:

69068

General notes

Technical Documentation guidelines

You can find herewith some generic information to simplify consulting of technical documentation:

1. Models of same range share the same exploded views, which report the richest set of spare parts: generally, a model does not necessarily have a related spare part for each particular shown on exploded views.
2. Some spare parts can not be represented directly on the exploded views (instruction booklets, specific kit, etc...). You can find those codes in the spare parts list with the same reference of particular where spares are installed or with references 099, 999. Instruction booklets, once managed, appear with 000 reference.
3. On the higher right site of each exploded view there is a serial number which indicates the beginning of the production of certain range: some models might have more than an exploded view for a given category, each distinguished by a different serial no. and linked to another spare parts list, In this case, serial no. is required to supply the right spare part code. Exploded view to be considered is the one with a more recent serial no. but previous than the one of the model that needs assistance.
4. Exploded views might require further updates even after publishing. Addition of new spares will go on following the already existing numeration references. Revision number of an exploded view is shown into last four digits of serial number into upper right hand corner.
5. The spare parts list associated to an exploded view shows related codes of spares managed for a certain model; for each spare part other informations are available:

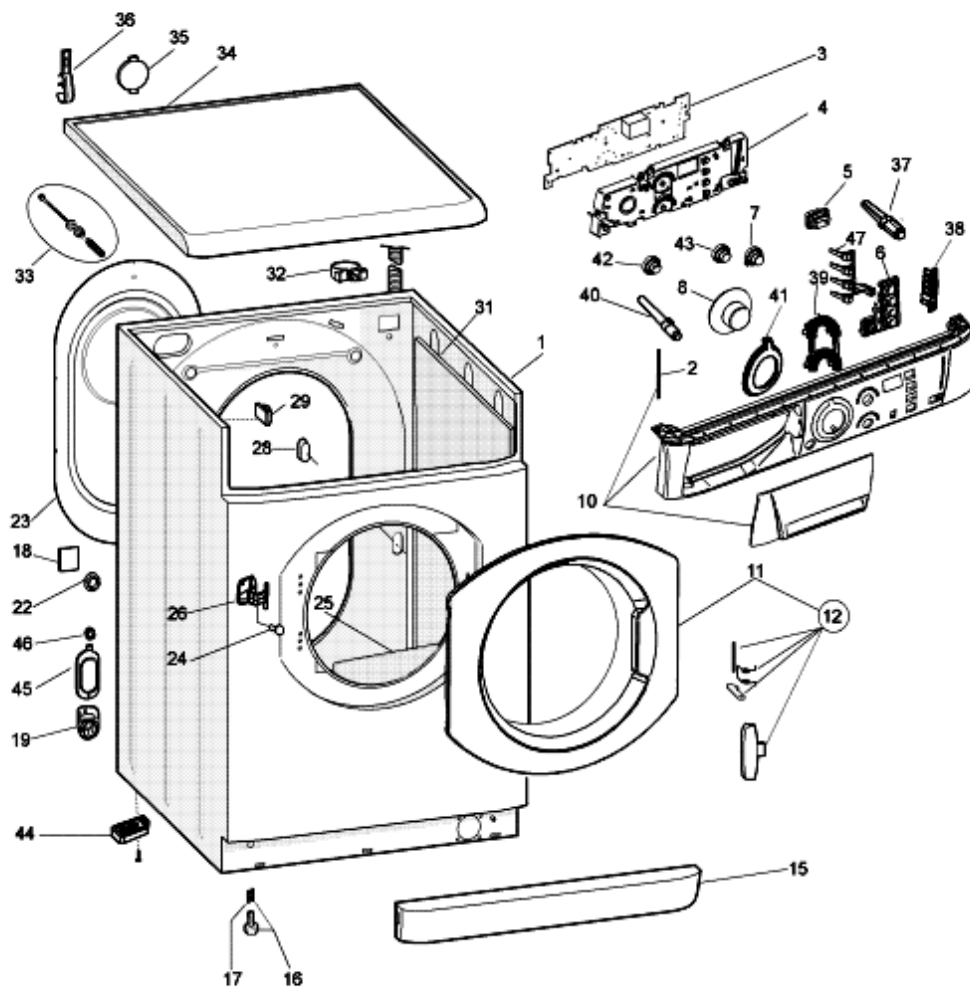
REF: reference no of spare into a table; SUBSTITUTE: list of spare(s) which can replace a code but that keeps same functional characteristics

INDUSTRIAL CODE: list of variables of a model (shown into model label) where such spare is used; NOTICE: code of information(s) to refer to complete technical intervention, track for changes or to find correct spare part code.
6. Some notices, into a same section are generic therefore cannot be directly linked to a spare part. In order to assist a model in the best way as possible, it is helpful to pay attention to all notices and constantly verify documentation updates
7. Technical documentation cover shows model name and its commercial codes

1140140C

Exploded views

Matr. 71015.0001
DIGIT



1140140C

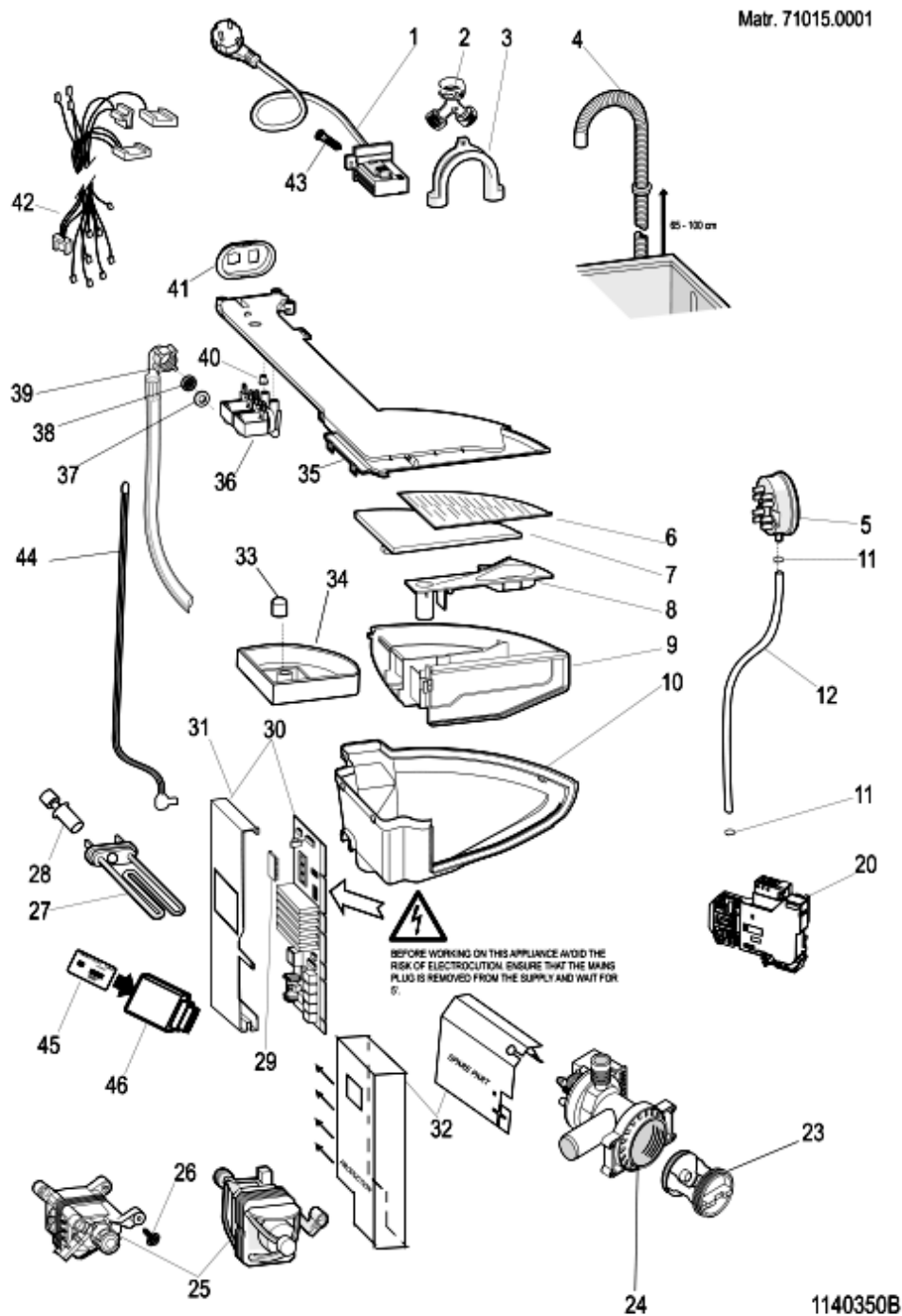
1140140C

Spare parts list

Ref.	Code	From	To S/N	Substitute	Description	Notice	Industrial
001	C00116539				cabinet white standard pw evoui		
002	C00091882				pivot pin drawer front 106.5x5		
003	C00262638			1 x C00277184	control digit arsf		
004	C00266911				support display module		
005	C00276618				pushbutton white pw start/pause		
006	C00277523				option button (5)		
007	C00277521				temperature pushbutton white pw		
008	C00280964				wash timer knob white pw prne17		
010	C00280963				control panel & handle pw		
011	C00276591				door frame+glass ariston usa wm		
012	C00276593				door handle kit - white pw ariston		
015	C00270809				plinth white pw na		
016	C00087084				foot		
017	C00083828				foot spring (11x8.5mm)		
019	C00064755				drain hose collar		
023	C00116851			1 x C00116923	rear cover - white pw		
024	C00256725				screw testfer m4 x 16 mm		
026	C00254619				hinge		
028	C00065185				bolt m4,5 x 8		
028	C00143911				blanking plate-rear(test plug) ul		
029	C00141387				cable clamp hose		
033	C00145769				transit bolt		
034	C00270807				top pw + plate ariston na		
036	C00046667				wiring stop		
036	C00064550				drain hose holder		
037	C00255691				start lens		
038	C00255147				light guide status		
039	C00255695				lens (temp./ spin)		
040	C00255704				on/off neon lens		
041	C00255689				programme knob lens		
042	C00277520				pushbutton white pw on/off arsf		
043	C00277527				spin speed pushbutton white pw		
047	C00264223				light guide status digit ar/hp		
099	C00090932				base cabinet plate usa normal ph		

1140350B

Exploded views



1140350B

Spare parts list

Ref.	Code	From	To S/N	Substitute	Description	Notice	Industrial
001	C00276595				supply cable usa		
003	C00019902				plastic -u- to make drain hose		
004	C00091775				drain hose to sink		
005	C00257922		10205...	1 x C00284971	pressure switch 1 l. 85-60 ul		
005	C00284971	10206...			pressure switch 1 l. 76-51 ul usa		
008	C00046154				additive cover		
009	C00046148			1 x C00281253	soap dispenser drawer (rotary)		
010	C00276598				dispenser body usa ul		
011	C00092412				hose clamp		
012	C00144077				pipe pressostat l= 540mm. evo ii		
020	C00065185				bolt m4,5 x 8		
020	C00257924				thermal lock ul		
024	C00112504				self cleaning pump 120v 60hz		
025	C00257889				motor three phase (stator 40) vpl		
026	C00094744				screw locking motor/tub		
027	C00112437				hole for heating element		
028	C00083915				thermistor ntc		
030	C00254529				module three phase + eeprom		
033	C00046157				stopper detergent container		
034	C00046152				additive container		
035	C00276599				hopper cover 2e 3u r 2.5 wm usa		
036	C00110452				electrovalve 1way 5,5lt hot rst2.5		
036	C00110453				electrovalve ie2u 7lt.rst2,5 120v		
039	C00112930				inlet hose with usa		
040	C00064534				seal - dispenser to valve		
041	C00257907				electrovalve support 2 ev usa		
042	C00276642				wiring pressure switch-sensor-		
042	C00276643				wiring evp evl ntc (module j8)		
042	C00276644				wiring comunic. display		
042	C00276645				cablage door lock (j4)		
042	C00276646				wiring pump-motor-module j9		
042	C00276647				wiring earth		
043	C00092348				self-scraping screw 3,5x8		
044	C00256761				emergency door release strap		
045	C00280965		10205...		card arwxf129wna 8kb sw		

1140350B

Spare parts list

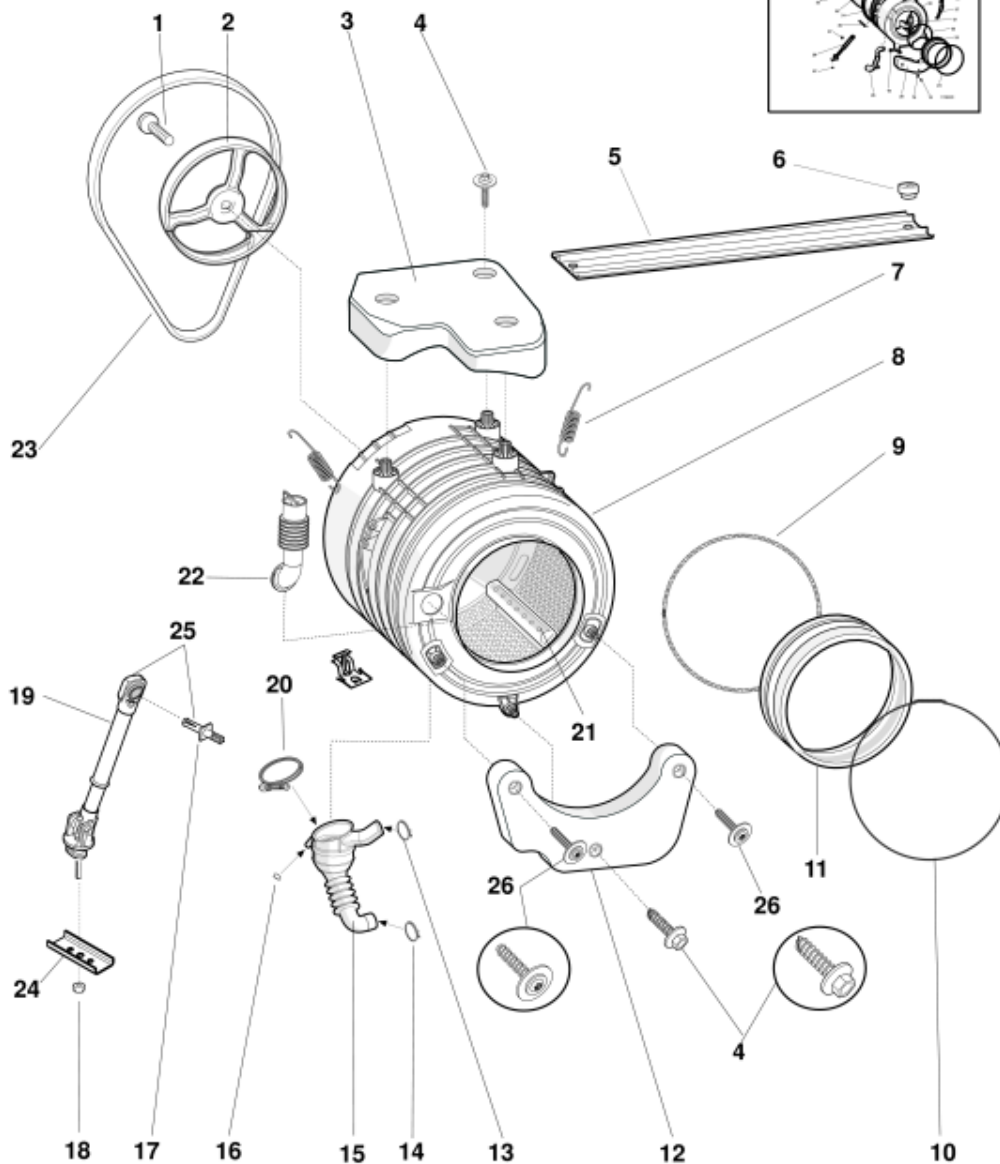
Ref.	Code	From	To S/N	Substitute	Description	Notice	Industrial
045	C00284976	10206...			card arwxf129wna 8kb sw		
046	C00272306				smart reader for card 8kb 32kb +		
099	C00257890				supressor filter ul		

1180250

Exploded views

Matr. 30716.0003
EVIZZAZIONE - EVOII

NO: S/N < 30801.0001 (WIEW 1140220 or 1180220)
NO: S/N > 30801.0001 NO EVOII TUB (WIEW 1140220 or 1180220) →
OK: S/N > 30801.0001 EVOII TUB



1180250

1180250

Spare parts list

Ref.	Code	From	To S/N	Substitute	Description	Notice	Industrial
001	C00051739			1 x C00064786 1 x C00143260	m8 x 20 tefl. 10.9 screw		
002	C00199343				drum pulley d=280 mm h=20 mm		
003	C00119110				upper counterweight 12.5 kg		
004	C00194611				screw.pl28 9.5x50 tmtfr t40	n4011c00	
006	C00141682				anchorage pad - suspension		
007	C00145754				suspension spring - tank		
008	C00276312				tank plastic 52lt.allp.ultra usa ul		
009	C00092155				door seal- rear retainer		
010	C00092156				door seal retainer front		
011	C00262267			1 x C00111416	door seal 30x30mm (hl)		
012	C00145205				front counterweight 11,4 kg		
014	C00092411			1 x C00094908	hose clamp		
015	C00092172				ball oko evo ii		
015	C00274662				outlet hose		
017	C00280757				plastic expansion peg new		
018	C00271652				nut romob m6x20x1,5		
020	C00094908				hose clamp		
021	C00064789			1 x C00268109	lifter - extractable		
022	C00066183				hose dispenser to tank		
023	C00119126				belt 1201 - 1198 j6		
025	C00140744				shock absorber 100 n kit		
026	C00194612				screw larger diameter 11.3x50 kit	n4011c00	