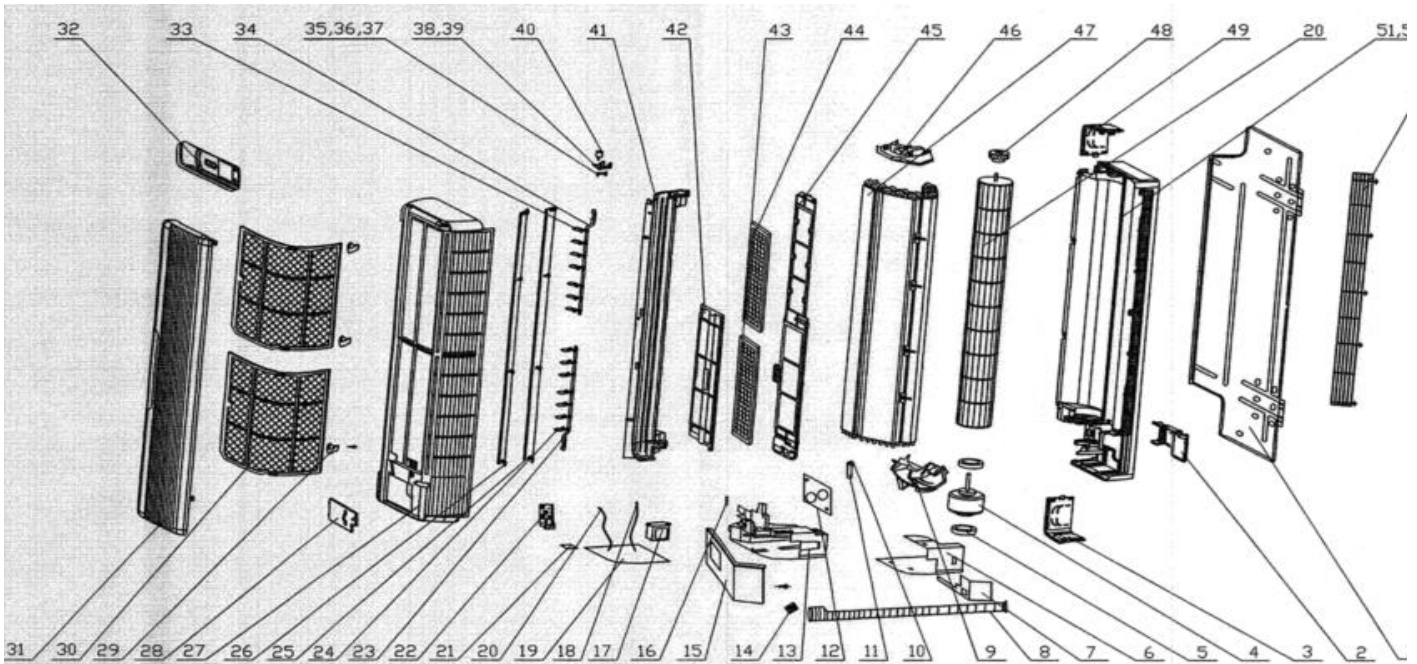


ComfortStar®



CCH012CD-13 208/230V - 1PH - 60HZ

NO.	Part Description	Part Code
1	Wall Mounting Frame	01252218
2	Pipe Clamp	24242014
3	Right Gate of Rear Case	26112012
4	Fan Motor	150120673
5	O-Gasket of Bearing	76512205
6	Down Shield Cover	01592045
7	Up Shield Cover	01592044
8	Drainage Pipe	0523001401
9	Right Fixer of Evaporator	26112098
10	Sensor Insert	42020063
11	Tube Sensor Bushing	05212423
12	Across-line Board	02122007
13	Electric Box	20112022
14	Terminal Board	42011233
15	Lid of electrical box	20112023
16	Wire Clip	26112089
17	Transformer	43110025
18	Temperature Sensor	390000591
19	Main Board	30035523
20	Ambient Temperature Sensor	390000451
21	Receiver Board	30046080
22	Indicator Light Support	24212007
23	Right Connecting Rod of Swing Louver	10582015

24	Right Swing Louver	105120141
25	Upper Guide Louver	10512011
26	Lower Guide Louver	10512012
27	Front Case Sub-assy	20002012
28	Lid of electrical box	20112023
29	Screw Cover	24252011
30	Filter Sub-Assy	11122022
31	Front Panel	20002010
32	Remote Controller	30515028
33	Left Swing Louver	105120131
34	Left Connecting Rod of Swing Louver	10582014
35	Upper Swing Link	10582011
36	Lower Swing Link	10582012
37	Connecting Bar	10582013
38	Axile Bush of Guide Louver	10542011
39	Motor Holder	26152011
40	Step Motor	15212101
41	Water Tray Components	201820105
	Water Tray	20182011
42	Air Cleaner Frame	26112013
43	Air Cleaner B	11012022
44	Air Cleaner A	11012021
45	Air Cleaner Fixing Holder	24222014
46	Left Evaporator Supporter	01072011
47	Evaporator Assy	0100215213
48	Fan Bearing	76512210
49	Left Gate of Rear Case	26112011
50	Cross Flow Fan	10352021
51	Rear Case	22202011
52	Drainage Plate	22202012
53	Wind Gap Mesh Enclosure	01472002