

The Dacor logo is written in a bold, italicized, sans-serif font. The letters are black with a white outline, giving it a three-dimensional appearance. A registered trademark symbol (®) is located at the end of the word.

dacor®

Family-Owned. American-Made.

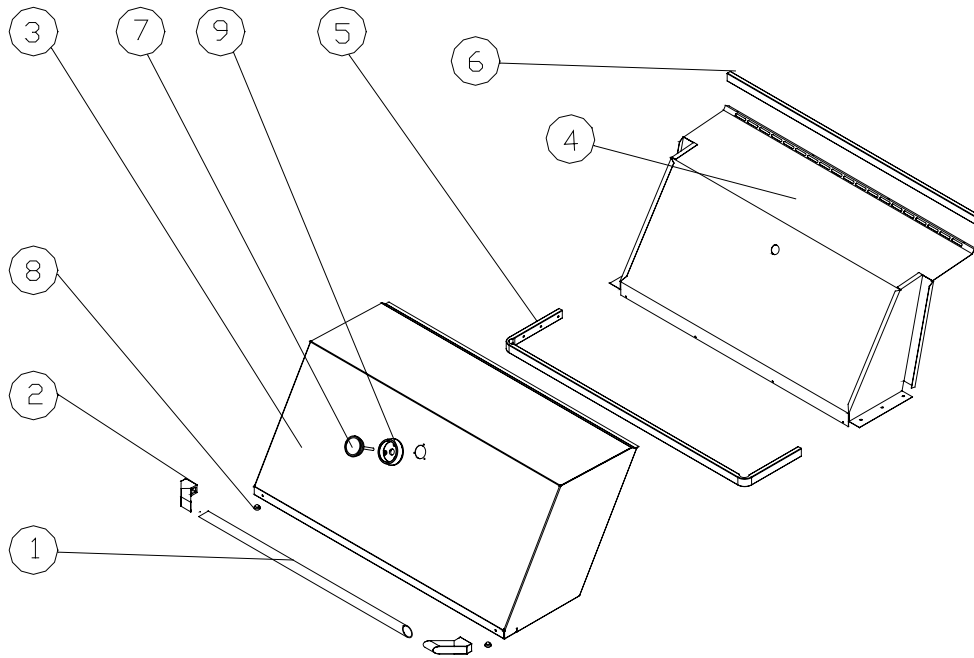
A photograph of a stainless steel Dacor EOG36 BBQ grill set in a kitchen. The grill has six burners on top and two oven compartments below. The background shows a kitchen counter with various items like a bowl, a bottle, and a basket.

**PARTS
CATALOG**

EOG36 BBQ

Canopy	Chassis
Firebox	Control Panel

EOG36 Canopy Assembly

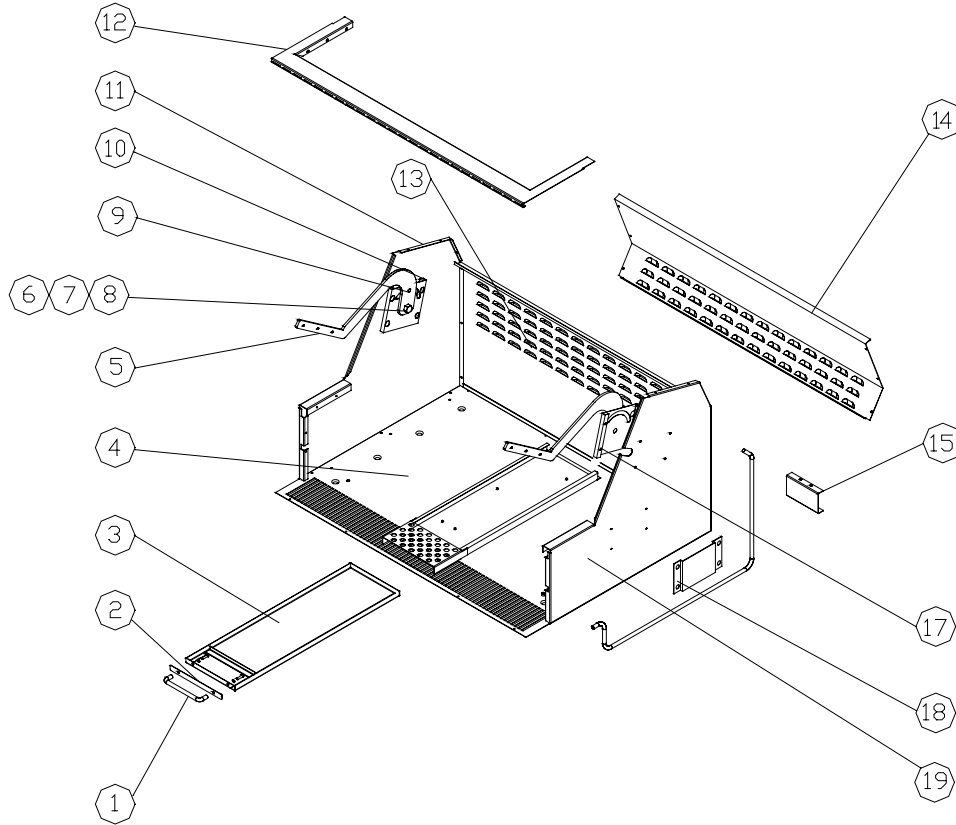


Item #	Part #	Description
1	72175	HANDLE, CANOPY
2	72178	END-CAP, CANOPY HANDLE
3	27730	WELD, CANOPY
4	27731	WELD, CANOPY LINER
5	36682	CANOPY FRAME
6	36683	CANOPY REAR STIFFENER
7	72686	TEMPERATURE GAUGE
8	72165	RUBBER BUMPER, HI-TEMP
9	72184	TEMP GAUGE TRIM RING

**Not Shown 83663 Temp Gauge Washer



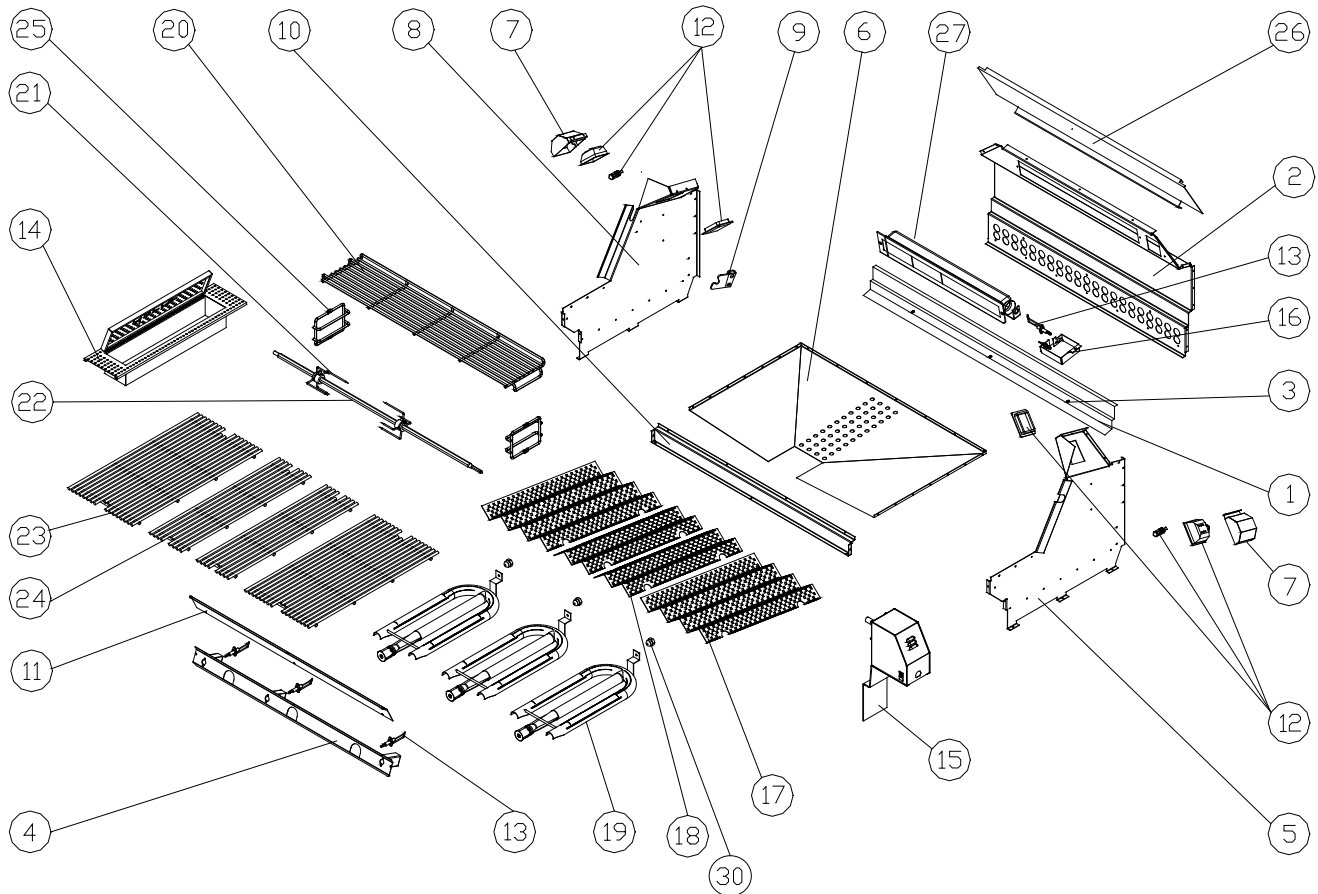
EOG36 Chassis Assembly



ITEM #	PART #	DESCRIPTION
1	72173	HANDLE, GREASE TRAY
2	36626	GREASE TRAY FACIA
3	38241	GREASE TRAY EDGE
4	27627	WELD, CHASSIS BOTTOM
5	72158	CANOPY ARM
6	83459	HINGE PIVOT, 3/8 - 16
7	83009	NUT, KEPS, #10 - 24
8	83049	NUT, HEX KEPS, #1/4-20
9	83462	SHOULDER BOLT, HINGE GUIDE
10	36653	HINGE BRACKET, LH
11	36638	CHASSIS SIDE, LH
12	36627	FRONT TRIM, 36"
13	36637	CHASSIS REAR, 36"
14	36640	SERVICE PANEL, CHASSIS RR
15	36365	BRACKET, TERM BLOCK
16	72179	INFRARED GAS TUBING, 3/8
17	36674	HINGE BRACKET, RH
18	36675	ROTIS POCKET
19	36639	CHASSIS SIDE, RH



EOG Firebox Assembly



1	38256	FIREBOX RR DEFLECTOR	16	38244	IR BROILER IGNITER BOX
2	38257	FIREBOX BACK, 36"	17	36628	FLAME SPREADER, LARGE
3	83204	SCREW, WELD, 8-32 x 3/8	18	36661	FLAME SPREADER, SMALL
4	27744	HEAT SHIELD	19	72153	U-BURNER, BBQ GRILL
5	36630	FIREBOX SIDE RIGHT	20	72159	WARMING RACK
6	36645	FIREBOX BOTTOM	21	72162	SPIT ROD FORK, 36"
7	36676	FIREBOX LAMP HOUSING	22	72163	SPIT ROD, 36"
8	36650	FIREBOX SIDE, LEFT	23	72157	GRILL, SS
9	36663*	ROTIS SPIT BRACKET	24	72177	GRILL, 4", SS
10	36650	FRONT FRAME FIREBOX	25	72185	WARMING RACK SUPPORT
11	36681	FIRE BOX ACCESS PANEL	26	36629BP	FIREBOX TOP, PORCELAIN, 36"
12	62175**	LIGHT ASSEMBLY	27	72172	IR BROILER, S16-31
13	72164	SPARK ELECTRODE	28	83534	WAFERHEAD SCREW (not shown)
14	27738	SMOKER TRAY	29	72265	POWER CORD (not shown)
15	13532***	ROTIS MOTOR ASSEMBLY	30	83287	ACORN NUT 8-32

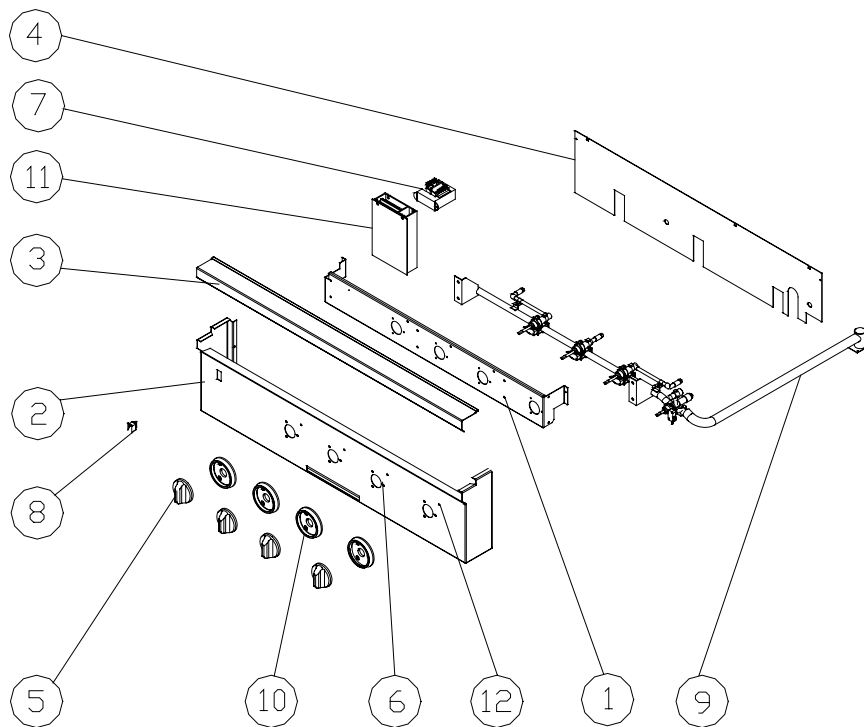
* Use PN 36767 for natural gas units Rev E and higher, and for LP gas units Rev D and higher.

** PN 62175 includes the lens and light bulb. To order lens separately, order PN 92376. To order light bulb separately, order PN 86573.

*** Use PN 13652 for natural gas units Rev E and higher, and for LP gas units Rev D and higher.

dacor

EOG36 Control Panel Assembly



ITEM #	PART #	DESCRIPTION	ITEM #	PART #	DESCRIPTION
1	36642	CONTROL SUB-PANEL	9D	66557NGSL	THERM SAFETY VALVE
2	38242	CONTROL PANEL	-	66557NGHA	THERM SAFETY VALVE
3	38243	LANDING LEDGE	-	66557LPSL	THERM SAFETY VALVE
4	36625	CONTROL PLENUM	-	66557LPHA	THERM SAFETY VALVE
5	62021B	KNOB, EPICURE	10	62020C	TRIM RING, CLEAR COAT
6	62036	INDICATOR LIGHT, BLUE	11	86526	SPARK MODULE
7	62057*	TRANSFORMER	12	82343	IND. LITE, RED, NEON, W/L
8	72169	LIGHT SWITCH	13	72176	THERMOCOUPLE
9	72190NGSL	MANIFOLD, NAT. GAS	NOT SHOWN:		
-	72190LPSL	MANIFOLD, LP GAS	14	72385**	WIRE HARNESS ASSEMBLY (complete)
9A	66565NGSL	LEFT OUTSIDE VALVE	15	66323	4 AMP FUSE
-	66565NGHA	LEFT OUTSIDE VALVE	16	66324	FUSE HOLDER
-	66565LPSL	LEFT OUTSIDE VALVE	17	83313	PANHEAD SCREW
-	66565LPHA	LEFT OUTSIDE VALVE	18	83534	WAFERHEAD SCREW
9B	66561NGSL	CENTER VALVE	19	72284	REGULATOR NG/SL 4" WC
-	66561LPSL	CENTER VALVE	20	86425	SPACER, MICROSWITCH
-	66561NGHA	CENTER VALVE	21	72310	REGULATOR LP/SL 11" WC
-	66561LPHA	CENTER VALVE	22	106831	IGNITER WIRE SET
9C	66569NGSL	RIGHT OUTSIDE VALVE			
-	66569LPSL	RIGHT OUTSIDE VALVE			
-	66569NGHA	RIGHT OUTSIDE VALVE			
-	66569LPHA	RIGHT OUTSIDE VALVE			

* Use PN 62808 for natural gas units Rev G and higher, and for LP gas units Rev F and higher.

** Use PN 92110 for natural gas units Rev G and higher, and for LP gas units Rev F and higher.

dacor