

A professional-grade stainless steel Dacor ERD36 range is shown in a kitchen setting. The range features a large cooktop with multiple burners, a control panel with several knobs, and a large oven door. The background is a blurred kitchen with various items on the counter.

dacor.

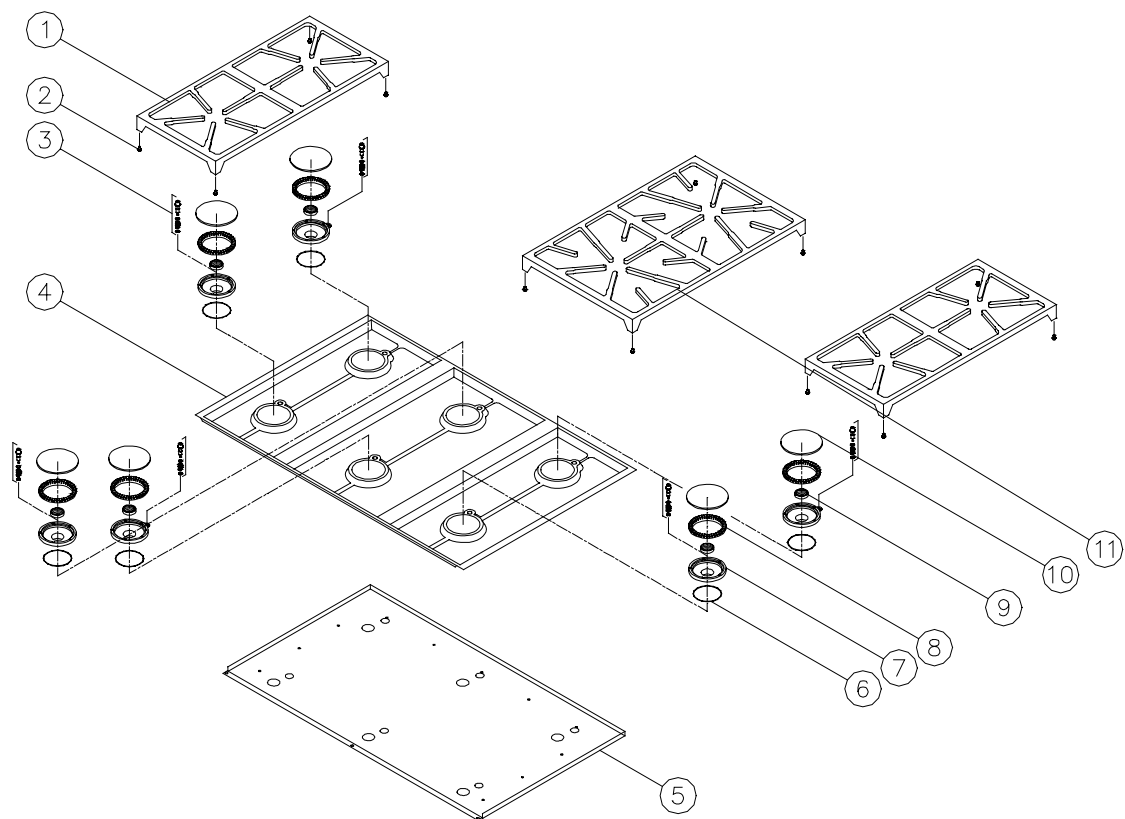
Family-Owned. American-Made.

PARTS CATALOG

ERD36 Range

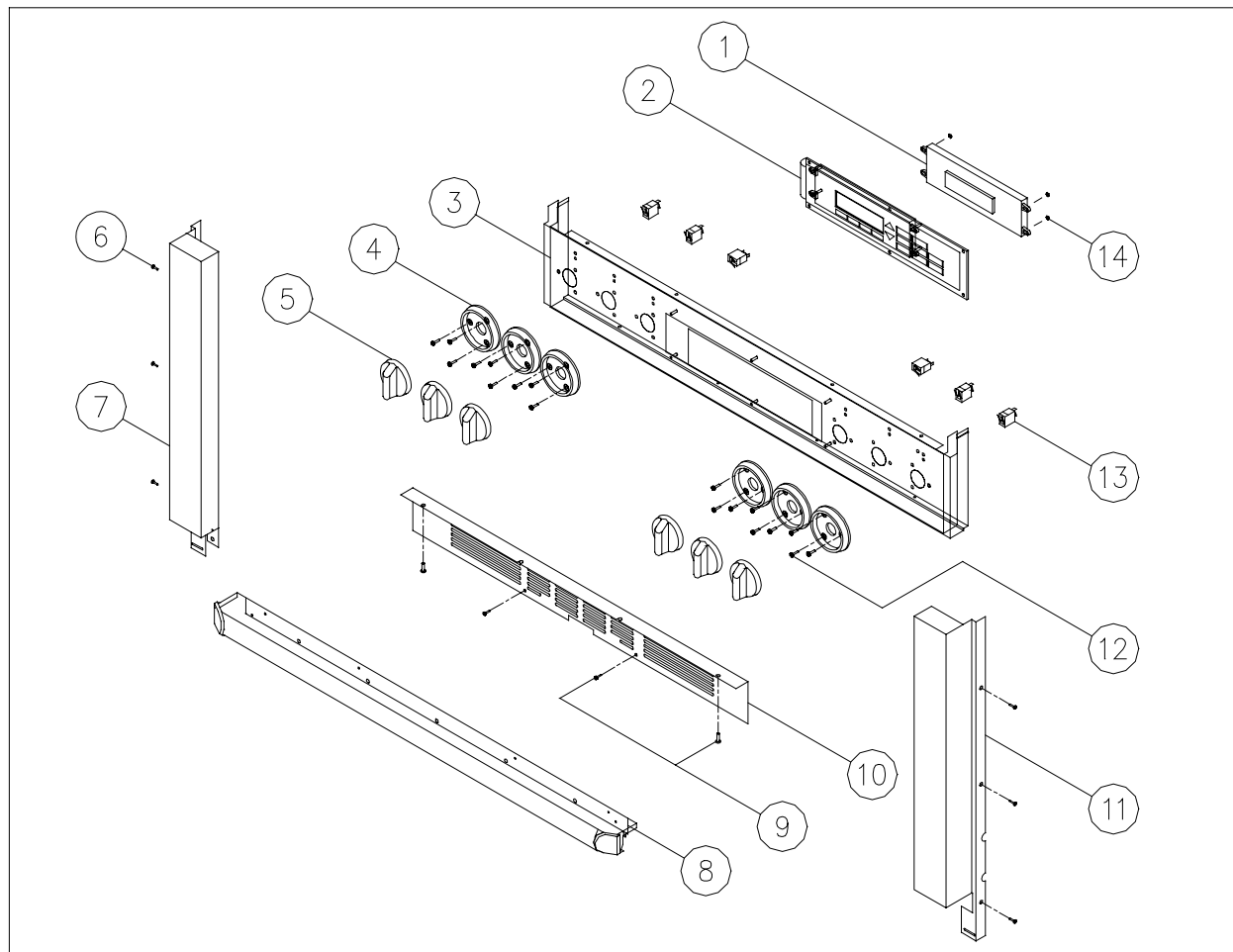
| | | |
|------------|---------------|-----------|
| Top Frame | Control Panel | Manifold |
| Gas Tubing | Cell | Oven Case |
| Base | Door | Updates |

ERD36 - TOP FRAME



| Ref. # | Part # | Description |
|--------|---------|-------------------------|
| 1 | 72433SB | Grate 10" |
| 2 | 86474 | Grate Support Pad |
| 3 | 66281 | Ignitor Assembly |
| 4 | 26959BP | Spill Tray |
| 5 | 36186 | Heat Shield, Spill Tray |
| 6 | 86395 | O-Ring, "D" Burner Head |
| 7 | 82563 | Burner Head, "D" Burner |
| 8 | 82564 | Burner Ring |
| 9 | 86405 | Brass Nut |
| 10 | 62022BM | Burner Cap, "D" Burner |
| 11 | 72434SB | Grate 14 " |

ERD36 - CONTROL PANEL



| REF. # | PART # | DESCRIPTION |
|-------------|-------------|-----------------------------|
| 1 | 62707 | OVEN CONTROL |
| 2 | 62309 | MEMBRANE (TOUCH PAD; BLACK) |
| 3 | 13178 | CONTROL PANEL ASSEMBLY |
| 4 | 62020C | TRIM RING, CHROME |
| 5 | 62021B | KNOB |
| 6 | 83026 | SCREW, 10 X 3/4" |
| 7 | 26919 | SIDE FRAME, LH |
| 8 | 86570BK | BLACK BULLNOSE ASSEMBLY |
| * | 86570BR | BRASS BULLNOSE ASSEMBLY |
| * | 86570CH | CHROME BULLNOSE ASSEMBLY |
| * | 86570CP | COPPER BULLNOSE ASSEMBLY |
| 9 | 83571 | SCREW WASHER HEAD 8 X 3/8" |
| 10 | 26950 | INTAKE GRILL W/BUMPERS |
| 11 | 26918 | SIDE FRAME, RH |
| 12 | 83534 | SCREW, WAFFER HEAD, 8 X 3/8 |
| 13 | 82086 | INDICATOR LIGHT, BLUE NEON |
| 14 | 83308 | 6-32 KEPS NUT |
| **Not Shown | 66153BR, CH | CONTROL PANEL ASSEMBLY |
| | 72652 | Rubber Bumpers |



Field Service Bulletin

dacor

P.O. Box 6530
Diamond Bar, CA 91765

Page of

| | | | |
|--|--------------------------------|--------------------------------|-----------------------|
| Issued By: Technical Service | Date Issued: 2-2004 | Distribution: Parts/Service | Supercedes: |
| Subject: Part Changes | Product Type: Epicure Range | Model No: ERD36, 48 | Bulletin No: 04-01 |
| Membrane Change | | | |

A change has been made to the ERD36 and ERD48. The membrane has been replaced with a new membrane that has no Standard Bake Mode.
P/N 62309 – membrane on the ERD36 was replaced with p/n **72942B**.
ERD48 – Membrane Part Number 62310 - was replaced with p/n **72943B**.
This change was made **February 2, 2004**.

Effective on revision level '**M**' for all **ERD36** ranges and on '**P**' for all ERD48 ranges, the **BAKE** mode has been removed from the membrane. If you are replacing the membrane for either of these two ranges, check the serial number of the unit before ordering the part to be sure that you have the correct part number.

******Membranes will continue to be available with the *bake mode pad* for use with units that currently have bake on the membrane. Membranes should always be swapped out with like membranes.



Date: 6-24-04

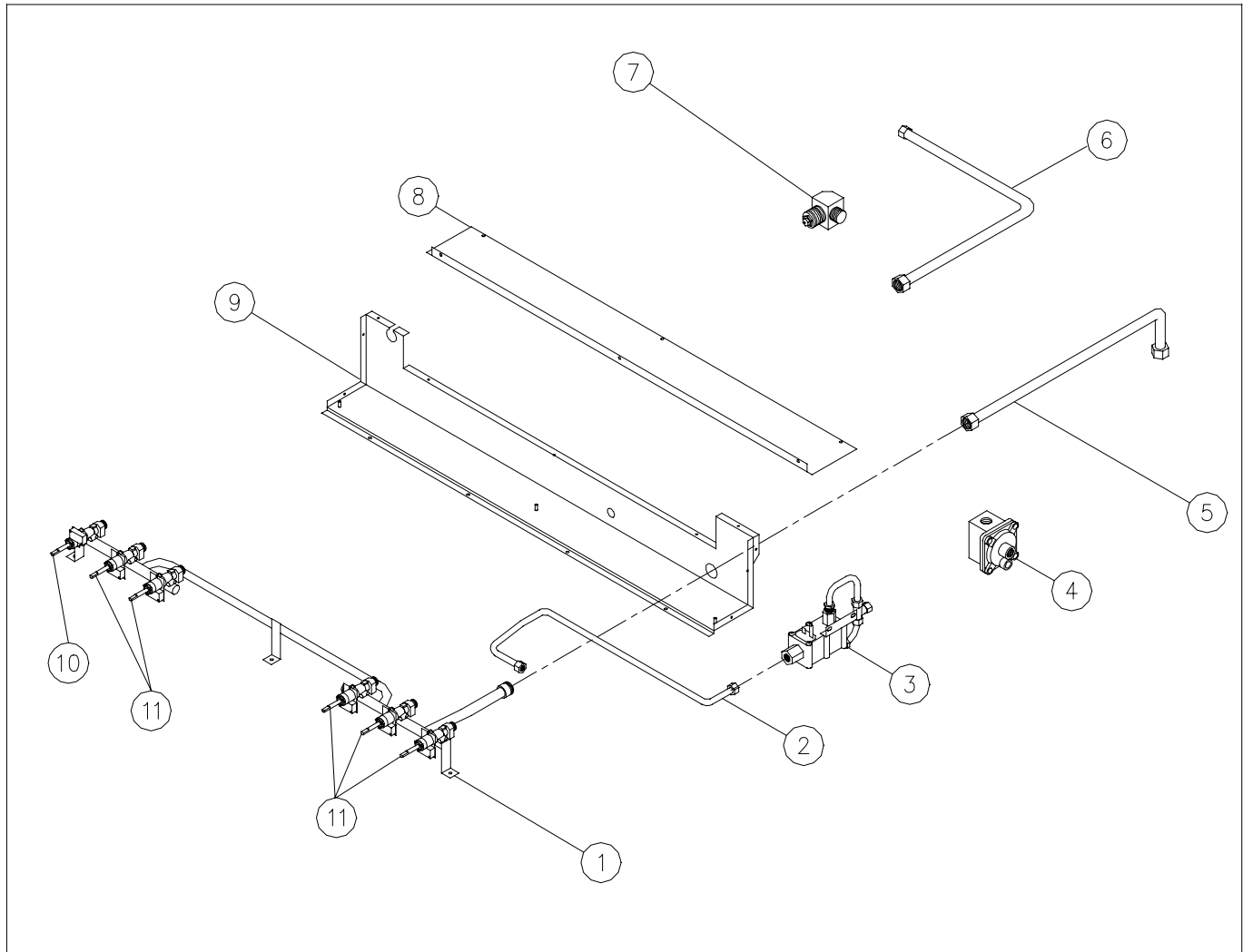
Re: Bullnose Parts Changes

Products Covered:
ERD36/ERG36

Revision Level Change:
ERD/ERG – FC01000000

Condition:
For units *without* grate supports, AFTER the serial break, use part number 66831SBK, SBR, SCH, SCP
For units *with* grate supports, BEFORE the serial break, use part number 86570BK, BR, CH, CP

ERD36 - MANIFOLD



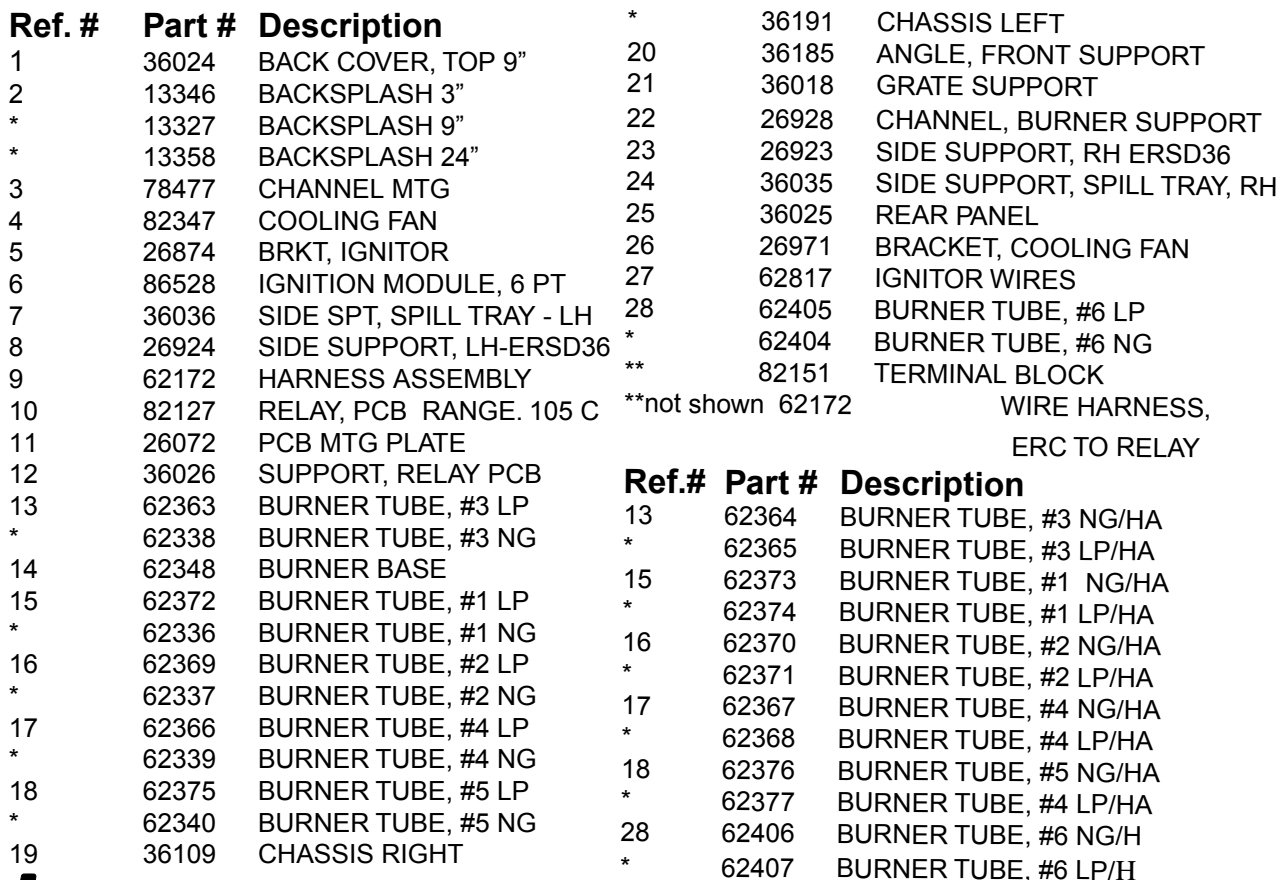
REF# PART # DESCRIPTION

| | | |
|----|-------|----------------------------------|
| 1 | 62332 | MANIFOLD ASSEMBLY WITH VALVES-NG |
| * | 62335 | MANIFOLD ASSEMBLY WITH VALVES-LP |
| 2 | 62341 | 3/8" ALUMINUM TUBING |
| 3 | 13233 | GAS VALVE ASSEMBLY |
| 4 | 62834 | PRESSURE REGULATOR - NG |
| * | 62434 | PRESSURE REGULATOR - LP |
| 5 | 62343 | 5/8" ALUMINUM TUBING |
| 6 | 62342 | 3/8" ALUMINUM TUBING |
| 7 | 62344 | FITTING ORIFICE - NG |
| * | 62956 | FITTING ORIFICE - LP |
| 8 | 36168 | MANIFOLD ENCLOSURE |
| 9 | 27359 | MANIFOLD ENCLOSURE ASSEMBLY |
| 10 | 86555 | VALVE - NG |
| * | 86558 | VALVE - LP |
| 11 | 86556 | VALVE - NG |
| * | 86559 | VALVE - LP |

HIGH ALTITUDE CHART

| | | |
|----|-------|-------------------------------------|
| 1 | 62334 | MANIFOLD ASSEMBLY WITH VALVES NG/HA |
| 1 | 62333 | MANIFOLD ASSEMBLY WITH VALVES LP/HA |
| 10 | 86564 | VALVE - LP/HA |
| 10 | 86561 | VALVE - NG/HA |
| 11 | 86565 | VALVE - LP/HA |
| 11 | 86562 | VALVE - NG/HA |

dacor®





Date: 7-6-04

Re: Wire Harness Changes

Products Covered:

ERD30S06, ERD36, ERD48, ERD60S06

Revision Level Change:

Revision Level was changed from: S to T on ERD30S06

M to N on ERD36

P to Q on ERD48

D to E on ERD60S06

Part # Changes

| Model # | Description | Old Part # | New Part # |
|--------------------|--------------|------------|------------|
| ERD30S06/ ERD60S06 | Wire Harness | 62615 | 72004 |
| ERD36 | Wire Harness | 62172 | 72007 |
| ERD48 | Wire Harness | 62396 | 72010 |
| All | Transformer | 62057 | 62808 |



Date: 3-17-05

Re: Relay Board

Products Covered:

ECS127, 130, 136 – MCS127, 130 – PCS130 – ERD30S06 – ERD60S06, ERD36, ERDE36, MRES30S, RSD30

Revision Level Change:

| Model# | Old Rev | New Rev |
|--|---------|---------|
| ECS127B/R/SBK/ SBR/SCH/SCP, MCS127B/R/S | H | J |
| ECS127B/R/SBK/SCH/SBR/SCP/208V, MCS127B/R/S/208V, ERD60S06 | F | G |
| ECS130B/R/SBK/SBR/SCH/SCP, MCS130B/R/S, PCS130BRS | J | K |
| ECS130B/R/SBK/SBR/SCH/SCP/208V, MCS130B/R/S/208V, PCS130B/R/S/208V | G | H |
| ECS136SBK/SBR/SCH/SCP | E | F |
| ERD30S06 | U | V |
| ERDE36, MRES30S | B | C |
| ERD36 | N | P |
| RSD30 | L | M |

Condition:

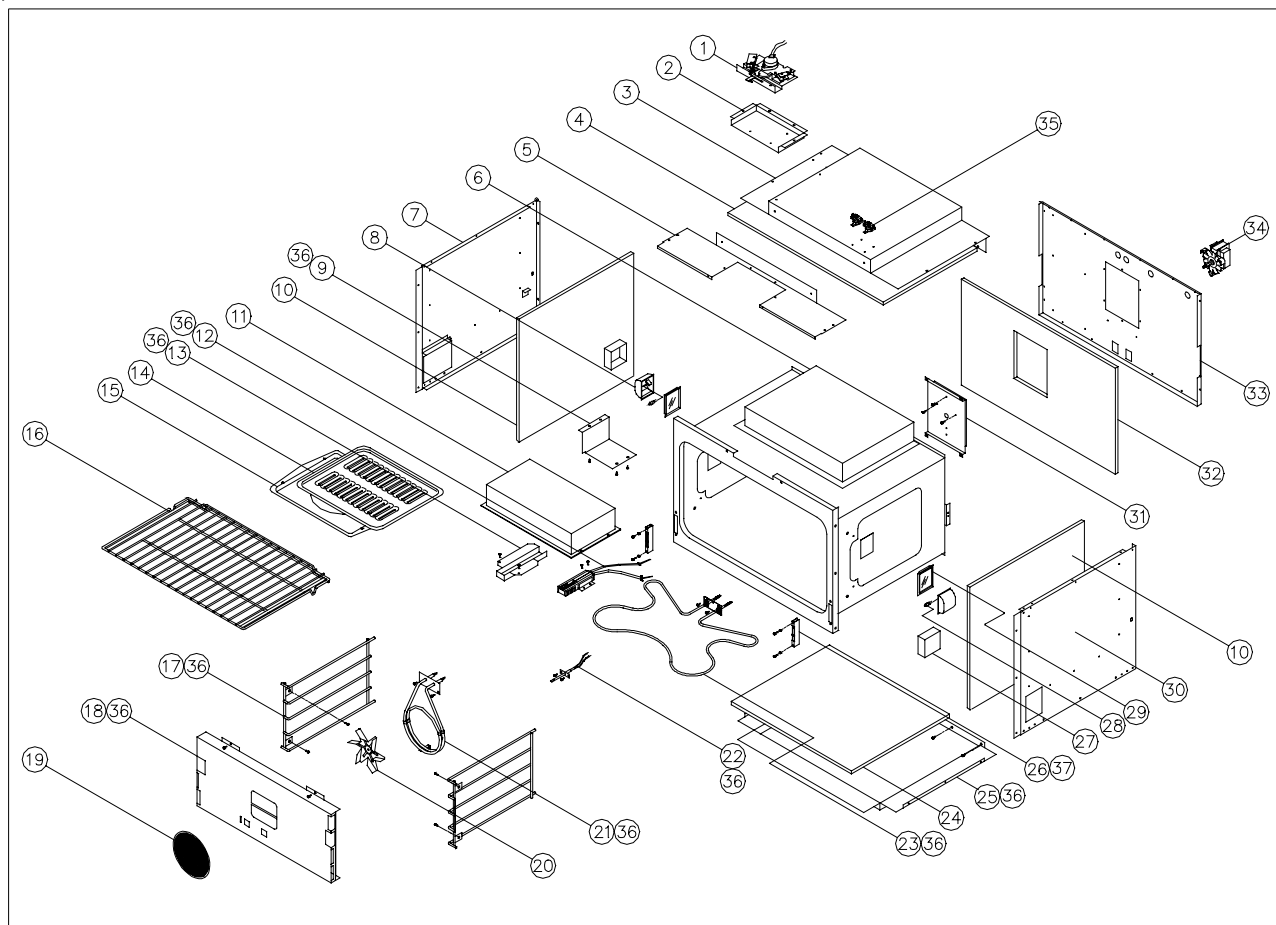
This replacement was implemented to improve reliability and to reduce warranty cost due to service issues relative to flickering lights. Relay boards ***ARE*** backwards compatible and can be used as service replacements.

Correction:

| Description | Old Part # | New Part # |
|-------------|------------|------------|
| Relay Board | 82127 | 92028 |

This change IS backward compatible, new parts can be used on any unit.

ERD36- 36" CELL ASSEMBLY



| REF # | PART # | DESCRIPTION | | | |
|-------|----------------|----------------------------|----|-------|------------------------------|
| 1 | 86166 | DOOR LATCH MECHANISM | 19 | 82891 | CONVECTION FILTER |
| 2 | 26598 | LATCH PLATE | 20 | 82651 | FAN BLADE |
| 3 | 38038 | CASE TOP REAR | 21 | 82377 | CONVECTION ELEMENT, 2200W |
| 4 | 80030 | INSULATION, TOP REAR | 22 | 62593 | TEMPERATURE SENSOR |
| 5 | 26873 | CASE TOP FRONT | 23 | 62601 | BAKE ELEMENT, 4000W |
| 6 | NotReplaceable | OVEN CELL | 24 | 80040 | INSULATION, CASE BOTTOM |
| 7 | 27530 | CASE SIDE LEFT | 25 | 26974 | CASE BOTTOM |
| 8 | 62175 | *HALOGEN LIGHT ASSEMBLY | 26 | 62075 | HINGE RECEPTACLE |
| 9 | 36098 | SHIELD, VENTURI TUBE | 27 | 36105 | HEAT SHIELD, OVEN LIGHT |
| 10 | 80032 | INSULATION, CELL SIDE | 28 | 86573 | HALOGEN BULB, 10W |
| 11 | 62262 | IR BROILER | 29 | 86574 | HALOGEN LIGHT SHIELD |
| 12 | 82473 | HOT SURFACE IGNITOR | 30 | 27529 | CASE SIDE, RIGHT |
| 13 | 66628 | IGNITOR SHIELD, IR BROILER | 31 | 36280 | CONV MOTOR MTG PLATE |
| 14 | 82106 | PLATED GRILL - BROILER PAN | 32 | 80031 | INSULATION, CASE BACK |
| 15 | 82107 | PORCELAIN PAN | 33 | 26882 | CASE BACK |
| 16 | 62783 | OVEN RACK | 34 | 62101 | CONVECTION MOTOR |
| 17 | 62784 | SUPPORT RACK | 35 | 82987 | THERMAL SW, HI TEMP CUT-OUT |
| 18 | 36576BP | CONVECTION BAFFLE | 36 | 83534 | SCREW, WAFER HD, #8 X 3/8" |
| | | | 37 | 83420 | SCREW, BTN HD, #10-32 X .50" |

dacor®

**Not Shown 62176 Light Assy
82089 LIGHT BULB



Date: 5-7-02

Re: ERD36/48 Rack Supports and Convection Baffles

Products Covered:
ERD36/48

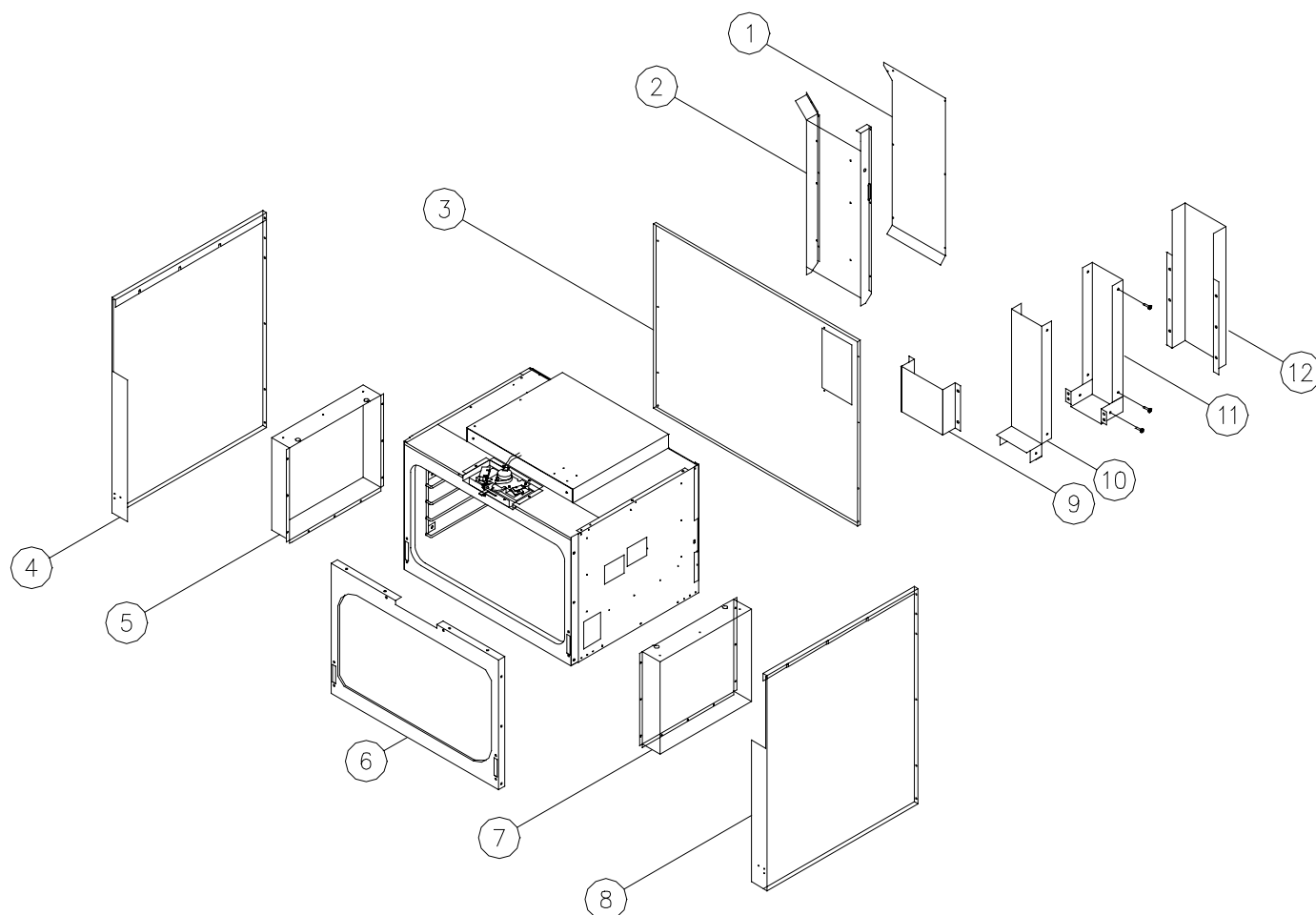
Revision Level Change:
ERD36 Changed from FF to FG
ERD48 changed from FG to FH

Correction:

The convection baffle changed to part # 36818BP
The rack support changed to part # 62972

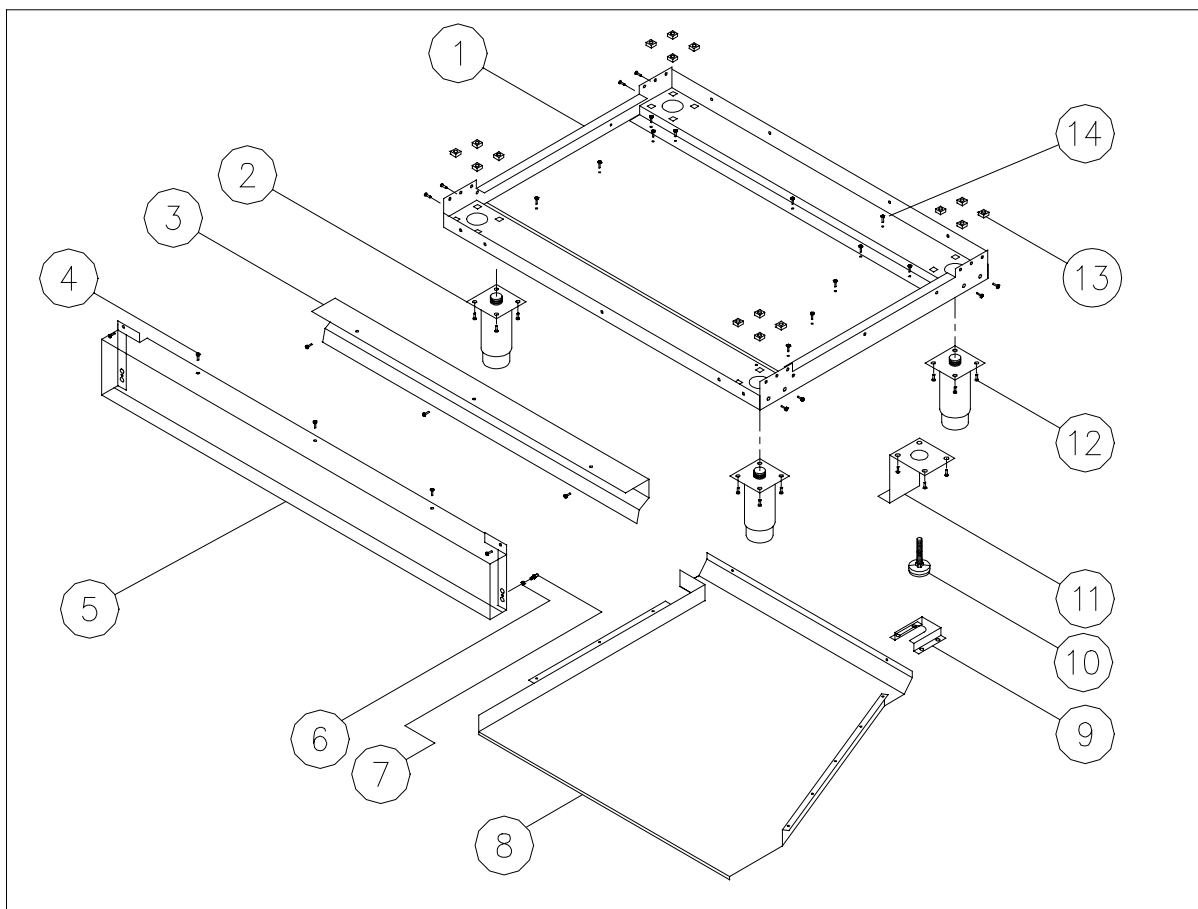
****NOTE:** When changing to the new convection baffle, both the baffle and rack supports must be ordered and installed.

ERD36 - OVEN CASE ASSEMBLY



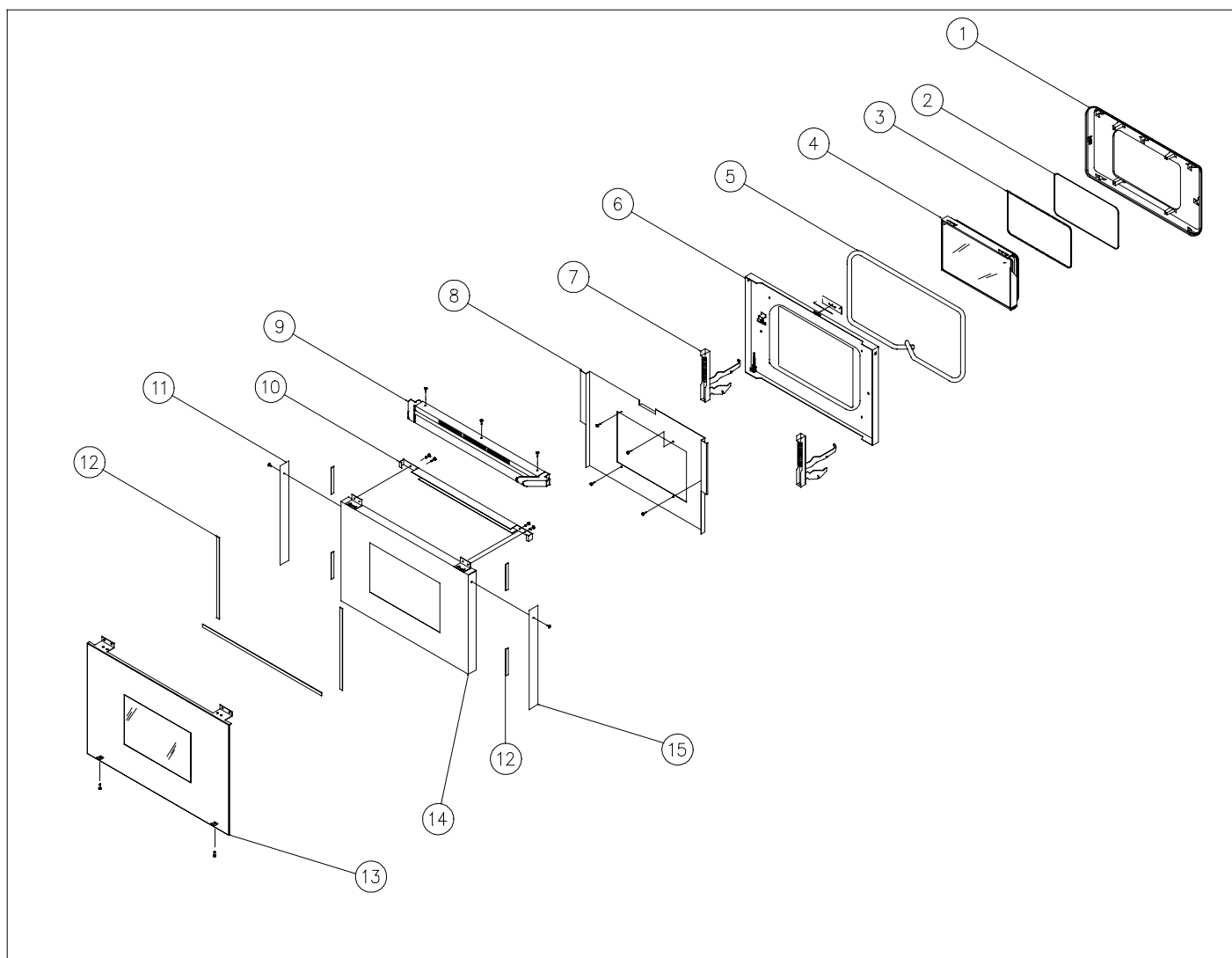
| Ref. # | Part # | Description |
|--------|---------|------------------------|
| 1 | 36020 | EXHAUST DUCT COVER |
| 2 | 36019 | EXHAUST DUCT |
| 3 | 36184 | BACK PANEL |
| 4 | 36183 | SIDE PANEL - LH |
| 5 | 36008 | RACEWAY SIDE PANEL |
| 6 | 36086 | FACE FRAME |
| 7 | 36008 | RACEWAY SIDE PANEL |
| 8 | 36182 | SIDE PANEL - RH |
| 9 | 36051 | FLUE DUCT FRONT SHIELD |
| 10 | 36075BP | FLUE DUCT, BASE 9" |
| 11 | 36131BP | FLUE DUCT, COVER 9" |
| 12 | 78557 | FLUE DUCT COVER 9" |

ERD36 - BASE ASSEMBLY



| REF. # | PART # | DESCRIPTION |
|--------|--------|-----------------------------|
| 1 | 13179 | BASE ASSEMBLY |
| * 2 | 700000 | ADJUSTABLE LEG |
| 3 | 36165 | EXHAUST DEFLECTOR |
| 4 | 83534 | SCREW, WAFER HD #8 X 3/8" |
| 5 | 26922 | KICK PANEL |
| 6 | 83308 | 6-32 KEPS NUT |
| 7 | 83412 | BALL STUD EXTENDED |
| 8 | 27373 | EXHAUST DUCT ASSEMBLY |
| 9 | 26041 | ANTI-TIP BRACKET |
| 10 | 83034 | LEVELER, ANTI TIP BRACKET |
| 11 | 27274 | ANTI-TIP BRACKET ASSEMBLY |
| 12 | 83397 | SCREW, CAP 1/4-20 X 5/8 |
| 13 | 83398 | NUT, RETAINER 1/4 - 20 |
| 14 | 83023 | SCREW, SLOT HWH, #10 X 3/8" |
| ** | 66813 | Plastic Leg Insert |

ERD36 - DOOR ASSEMBLY



| REF # | PART # | DESCRIPTION |
|-------|----------------------|--|
| 1 | 27349BP | INNER LINER ASSEMBLY |
| 2 | 82790 | "J" TRIM |
| 3 | 26429 | THERMOCORD WINDOW PACK |
| 4 | 13140 | WINDOW PACK AfterSN#FG13220823Order72148 |
| 5 | 62813 | DOOR GASKET |
| 6 | 86753 | OUTER LINER ASSEMBLY |
| 7 | 62436 | DOOR HINGE |
| 8 | 26908B | HEAT SHIELD |
| 9 | 13407SCH,SCP,SBK,SCP | HANDLE ASSEMBLY |
| 10 | 26970B | BACKING PANEL |
| 11 | 36002 | TRIM - DOOR EDGE, LEFT |
| 12 | 83573 | TAPE, DOUBLE SIDED |
| 13 | 66092 | DOOR SKIN ASSEMBLY |
| 14 | 27327B | MOUNTING FRAME ASSEMBLY |
| 15 | 36003 | TRIM - DOOR EDGE, RIGHT |



Date: 4-5-02

Re: Grates

Products Covered:

ERD30

ERD36

ERD48

ESG

EOG

Revision Level Change:

ERD30 – FK2141737

ERD36 FF2141685

ERD48 FG2141665

Grates were changed – the new grates have a smooth porcelain finish rather than the matted black finish of the previous grate

| Model # | Old Part # | New Part # |
|------------------------------------|-------------------|-------------------|
| ERD30/36/48, ESG366/486 | 62881BM | 72434SB |
| ERD36, ESG366 | 62883BM | 72433SB |
| EOG52 | 82368BM | 72436SB |



Date: 9-9-04

Re: Revisions to alleviate an uneven spill tray.

Products Covered:

Part # 46130BP (front support angle, spill tray) and part # 83064 (foam countertop seal, qty 32.5) was added to all ERD36 and ERDE36 models.

Revision Level Change:

The revision level was not changed. The first units to be manufactured with this change for the ERD36SCP/NG is FN04322302 and for the ERDE36SBK/NG is FB043220305.

Condition:

This bracket corrects sloping grates or uneven spill trays. It is a retro-fittable and can be used on any revision ERD36 or ERDE36.