

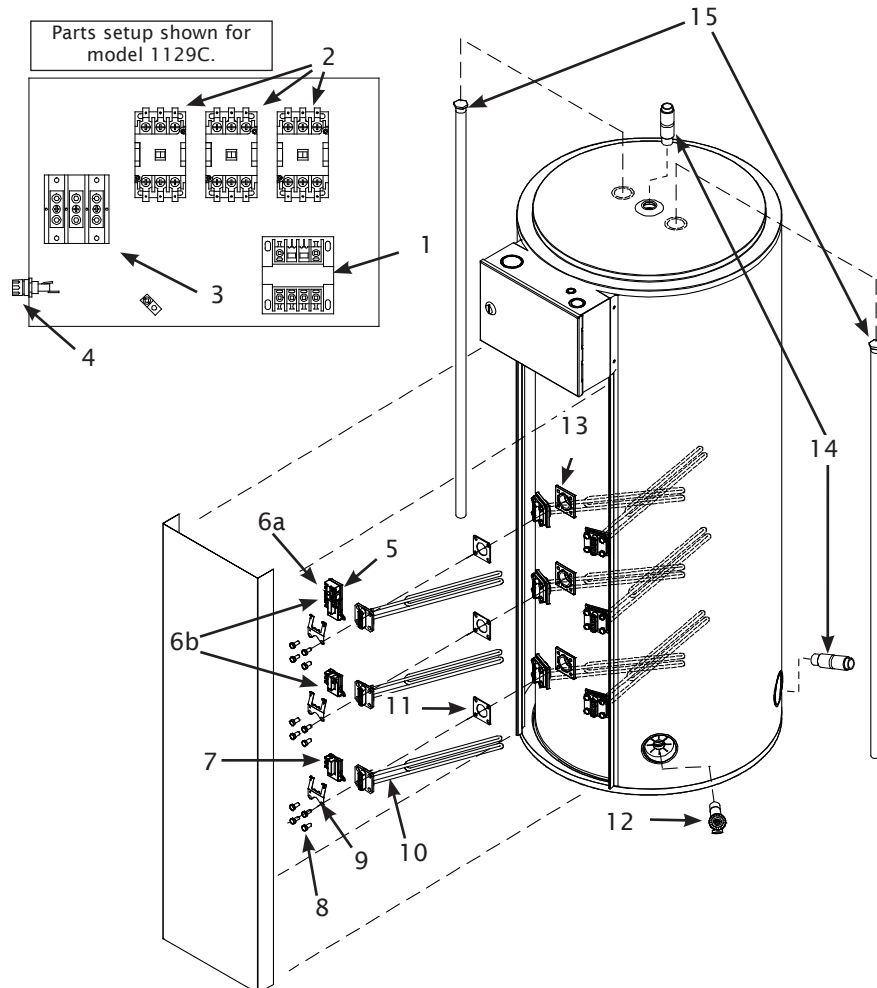
COMMERCIAL ELECTRIC WATER HEATERS MODELS

1022, 1023, 1024, 1026, 1122, 1123, 1124, 1126, 1129

| I.D. | Part # | Description | For Use With Models |
|------|------------|-----------------------------------|---|
| 1 | TF485000 | Transformer | 1023, 6/1123, 6, 9 (600 volts) |
| 2 | CM586000 | Magnetic contactor 42BF | 1023, 6/1123, 6, 9 (600 volts) |
| | CM586001 | Magnetic contactor 42CF | 1023, 6/1123, 6, 9 (208/240 volts) with less than 40 amps/contactor |
| | CM586002 | Magnetic contactor 42DF | 1023, 6/1123, 6, 9 (208/240 volts) with greater than 40 amps/contactor |
| 3 | TB587000 | Terminal block end | Three phases |
| | TB587001 | Terminal block end | Single phase |
| 4 | FH588000 | Fuse holder with fuse | All except 1022, 4/1122, 4 |
| 5 | TH38X007 | Upper thermostat with reset 180°F | All |
| 6a | TH3ZX001 | High limit reset control | All |
| 6b | TH38X003 | Upper thermostat 180°F | All 1129 |
| 7 | TH38X005 | Lower thermostat 180°F | All except 1023/1123 |
| 8 | 45000006-A | Hexagonal washer head screw | All |
| 9 | 18G0001 | Thermostat bracket | All |
| 10 | See table | Square flange element | All |
| 11 | 18G0002 | Square flange element gasket | All |
| 12 | DV3Z0070 | Brass drain valve | All |
| 13 | 99001204-A | Twist-lock element flange | All |
| 14 | NP032400 | Inlet/outlet nipple | All |
| 15 | 20166430-A | Magnesium anode rod | 1022, 3, 4, 6 |
| | MS166530 | Magnesium anode rod | 1122, 3, 4, 6, 9 |

ELEMENTS

| Part # | Watts | Volts |
|----------|--------|-------|
| 9AG30/80 | 3 000W | 208V |
| 9AG45/80 | 4 500W | 208V |
| 9AG50/80 | 5 000W | 208V |
| 9AG60/80 | 6 000W | 208V |
| 10G30/80 | 3 000W | 240V |
| 10G45/80 | 4 500W | 240V |
| 10G50/80 | 5 000W | 240V |
| 10G60/80 | 6 000W | 240V |
| 12G20/80 | 2 000W | 347V |
| 12G30/80 | 3 000W | 347V |
| 12G40/80 | 4 000W | 347V |
| 12G45/80 | 4 500W | 347V |
| 12G50/80 | 5 000W | 347V |
| 12G60/80 | 6 000W | 347V |
| 12G70/80 | 7 000W | 347V |



REPLACEMENT PARTS LIST

