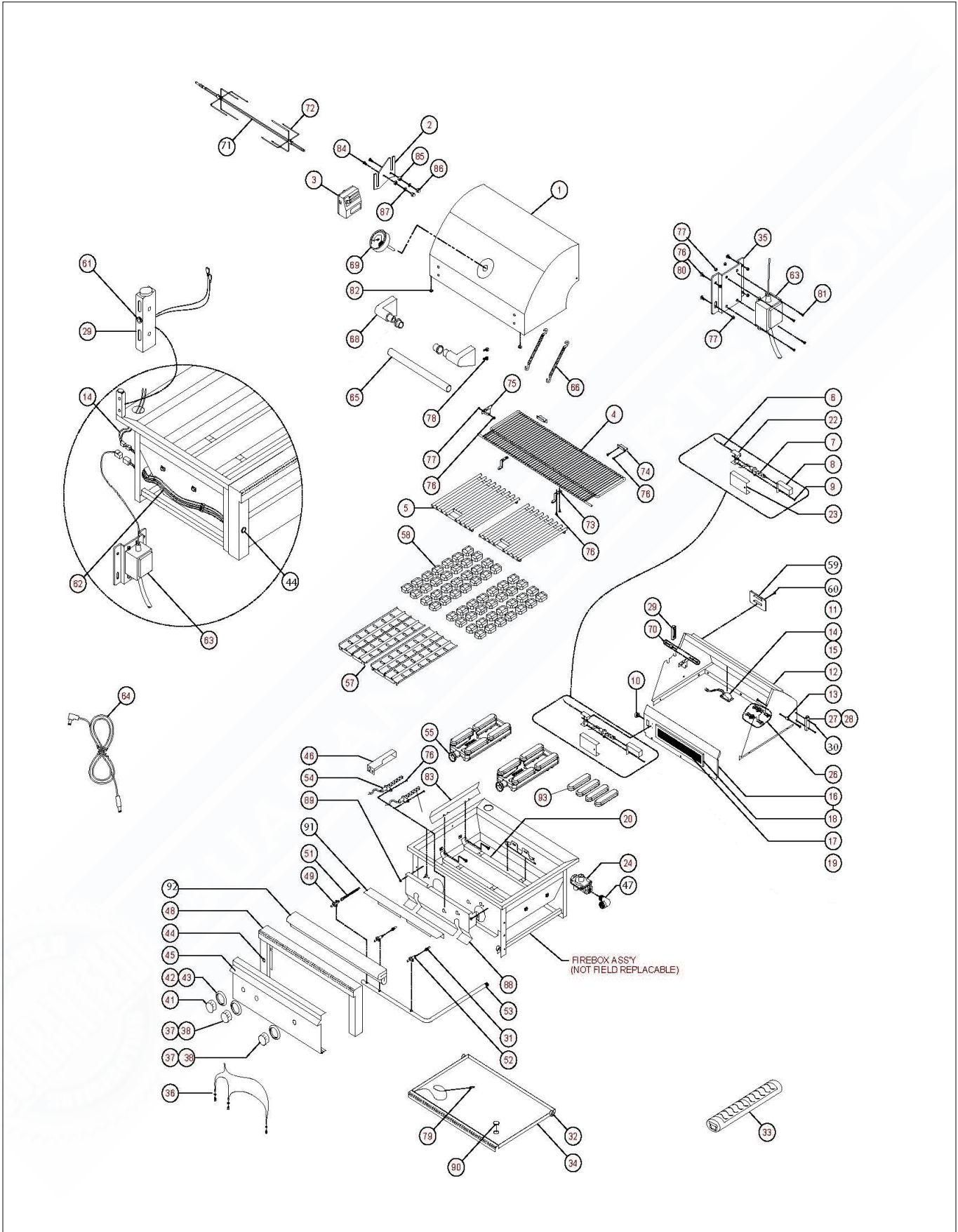


L36R-3 Parts Breakdown



L36R-3 Parts Breakdown

Item	Part No.	Name	Qty	Uom	NOTES
1	80310	FRONT HOOD ASSY, 36"	1	EA	
2	90132	MOTOR MOUNTING BRACKET, KIT, ALL PRO	1	EA	
3	80277	MOTOR ASSY, HEAVY DUTY 3 SPEED	1	EA	
4	32110	WARMING SHELF, PRO 36"	1	EA	
5	34706	(2) GRATES 16 1/2" X 18 1/2"	2	EA	
6	20018	IR THERMOCOUPLE	1	EA	
7	33052	IR ELECTRODE, HOT SURFACE	1	EA	
NI	80487	WIRE ASSEMBLY, ROTIS	1	EA	
8	33093	GAS COLLECTOR BOX, IR ROTIS	1	EA	
9	14018	SCREW, #6-32 X 1/4 PH. PAN HD	3	EA	
10	31795	IR BRASS ELBOW, 7/16-20 MALE THREAD	1	EA	
11	32441	LIGHT PANEL FOR DUAL LIGHTS, 36"	1	EA	
12	81423	REAR HOOD ASSEMBLY 36	1	EACH	
13	90237	HOOD SPACER KIT	1	EA	
14	80447	HOOD LIGHT ASSY, DUAL W/10W BULB	1	EA	
15	31979	BULB, REPLACEMENT, 10W HALOGEN	1	EA	
NI	32322	GLASS REPLACEMENT COVER W/CLIP	1	EA	
16	80274	IR PANEL ASSY, 36" (INCLUDES BURNER)	1	EA	
17	32989	IT ROTIS. BURNER ONLY (21 IN.)	1	EA	
18	32992	IR BURNER FRAME ONLY (21 IN.)	1	EA	
19	32644	SCREW, #8-32 X 5/16 PH. FLAT HD	2	EA	
20	36674	BURNER-HANGER, 36	2	EA	
22	80790	IR IGNITER BRACKET, ALL PRO	1	EA	
23	33136	IR IGNITER COVER, 4-1/8"	1	EA	
24	30781	REGULATOR 4/11 N/G ONLY	1	EA	

L36R-3 Parts Breakdown

Item	Part No.	Name	Qty	Uom	NOTES
24	13053	REGULATOR W/30" HOSE DOUBLE STAGE - LP	1	EA	
26	90128	ROLLER BEARING KIT - ROTISSERIE (2 PARTS EA)	1	EA	
27	32468	HOOD STOP	1	EA	
28	32470	BUMPER FOR HOOD STOP, .750 DIA	2	EA	
29	33389	HOOD STOP, LEFT, ALL PRO	1	EA	
30	32469	SCREW/HOOD STOP - #8-32 X 1" PH TRUSS HD	4	EA	
31	PRENGK	COMPLETE ORIFICE FIELD KIT - LP TO NG	1	EA	
31	PRELPK	COMPLETE ORIFICE FIELD KIT - NG TO LP	1	EA	
NI	13013	ORIFICE, BURNER, NG #41 SHORT	3	EA	
NI	13019	ORIFICE, BURNER, LP #53 SHORT	3	EA	
NI	13016	ORIFICE, IR ROTIS, NG (#50 SHORT)	1	EA	
NI	13021	ORIFICE, IR ROTIS, LP (#57 SHORT)	1	EA	
32	90129	ROLLER BEARING KIT	1	EA	
33	34586	SMOKER BOX KIT	1	EA	
34	31494	DRIP PAN, 36"	1	EA	
35	36467	BRACKET, MOUNT, POWER SUPPLY, FLAMTRAK	1	EA	
36	80436	LED HARNESS ASSY, L600/L700 W/IR	1	EA	
NI	32554	LED HOLDER (INCLUDES NUT)	4	EA	
NI	32055	WASHER	4	EA	
37	90137	KNOB, BURNER, STAINLESS	3	EA	
38	90139	STAINLESS KNOB KIT (3 BURNER + 1 ROTIS)	1	EA	
41	90136	KNOB, ROTIS, STAINLESS	1	EA	
42	10001	BEZEL	4	EA	
43	31929	BEZEL SCREW, #6-32 X 1/8 PH PAN	8	EA	
44	33148	LIGHT SWITCH + HARNESS, BLUE LIGHTED	1	EA	

L36R-3 Parts Breakdown

Item	Part No.	Name	Qty	Uom	NOTES
45	80538	FRONT PANEL, PRO 36"	1	EA	
NI	11074	LOGO, LYNX	1	EA	
46	36438	GAS COLLECTOR BOX, CERAMIC-BURNER	3	EA	
47	13010	ELBOW, STREET, 1/2" 90 DEGREE - NG ONLY	1	EA	
47	13054	ELBOW, 3/8" FLARE TO 1/2" FIP - LP ONLY	1	EA	
48	80515	BULLNOSE ASS'Y, PRO 36"	1	EA	
49	31772	IR BURNER VALVE W/MICROSWITCH	1	EA	
51	31794	FLEX HOSE, 9MM X 38" W/ 7/16 FITTINGS	1	EA	
52	34103	MAIN BURNER VALVE W/MICROSWITCH	3	EA	
NI	32845	MICROSWITCH	3	EA	
NI	34197	SCREW	3	EA	
53	80228	MANIFOLD ASS'Y W/VALVES, 36" LP	1	EA	
53	80230	MANIFOLD ASS'Y W/VALVES, 36" NG	1	EA	
54	33051	ELECTRODE, MAIN BURNER, HOT SURFACE	1	EA	
NI	80432	IGNITION WIRE HARNESS 36 & 42	1	EA	
55	90274	Ceramic Burner Enhancement kit, See LISO-0004A	3	each	
	NOTE	(REPLACES ORIGINAL)		EA	
	81430	BURNER, CERAMIC ASSY	3	EA	
	NOTE	(CAN USE AFTER KIT IS INSTALLED)		EA	
57	80643	BRIQUETTE TRAY, 27", 36"	3	EA	
NI	90189	COMPLETE TRAY W/BRIQUETTES & CLIPS	3	EA	
58	90053	BRIQUETTES, 35 PER BOX	3	EA	
NI	31588	BRIQUETTE, SINGLE		EA	
59	30417	IR ACCESS COVER	1	EA	
60	14012	SCREW, 1/4-20 X 3/8 PH TRUSS HD, S/S	1	EA	

L36R-3 Parts Breakdown

Item	Part No.	Name	Qty	Uom	NOTES
61	80440	ROTISERIE JACK + INTERNAL HARNESS	1	EA	
NI	33129	JACK ONLY, DC PANEL MOUNT	1	EA	
62	80533	MAIN POWER HARNESS (27IR, 30, 36, 42, 54)	1	EA	
63	36971	POWER SUPPLY (5 AMP)	1	each	
	NOTE	(MUST ALSO ORDER ITEM 35 FOR UNITS BUILT BEFORE 7/12/22)		EA	
64	33416	ROTISERIE EXTERNAL CORD	1	EA	
65	32523	HOOD HANDLE, 36"	1	EA	
66	31780	EXTENSION SPRING	2	EA	
NI	14024	LOCK NUT, #8-32, S/S	4	EA	
NI	31782	SHOULDER SCREW	4	EA	
68	31736	END CAP, HOOD HANDLE WITH INSU	2	EA	
69	35765	HOOD THERMOMETER, SEALED BLACK	1	EA	
NI	33573	WASHER FOR HOOD THERMOMETER	1	EA	
70	14013	PIVOT SCREW, 1/4-20 X 1" HEX DRIVE	2	EA	
NI	14009	PIVOT SCREW NUT, HEX, 1/4-20 S/S	2	EA	
NI	14026	PIVOT WASHER, SPLIT LOCK, 1/4 S/S	6	EA	
71	32129	SPIT ROD, PRO 36"	1	EA	
72	36995	FORK ROTIS, L500-L36, SMALL	2	EA	
NI	31061	THUMB SCREW	2	EA	
73	33033	FRONT RETAINING BKT, WARMING RACK	2	EA	
74	32133	REAR RETAINING BRACKET, WARMING RACK	2	EA	
75	33597	LEFT RETAINING BRACKET, WARMING RACK	1	EA	
76	14014	SCREW	4	EA	
77	14024	LOCK NUT, #8-32, S/S	4	EA	
78	31930	BOLT, HEX HEAD, 1/4-20 X 3/8" S/S	4	EA	

L36R-3 Parts Breakdown

Item	Part No.	Name	Qty	Uom	NOTES
79	31031	ALTERNATE LIGHT DEVICE, MATCH HOLDER	1	EA	
80	31013	SCREW, #8 X 1/2 PH TRUSS HD TYPE 'A'	1	EA	
81	31649	SCREW, #8-32 X 5/8, PHP, SS	4	EA	
82	32477	BUMPER 1/2" DIA, RUBBER, PRESS IN	2	EA	
83	33751	BRIQUETTE HEAT DIVIDER	2	EA	
84	14099	SCREW, #10-24 X 3/4 PH FLAT HD S/S	6	EA	
85	32939	ROTIS. SPACER	2	EA	
86	32196	NUT, ACORN, #10-24, S/S	2	EA	
87	32197	WASHER, #10 SPLIT LOCK, S/S	2	EA	
88	33658	HEAT SHIELD, PRO 36"	1	EA	
89	14023	NUT, COMBINATION (FOR HEAT SHIELD)	2	EA	
90	90151	DRAIN PLUG AND SEAL KIT, DRIP PAN	1	EA	
91	34630	RETAINER, INSULATION	1	EA	
92	90249	INSULATION (36" X 6")	1	EA	
93	90265	BURNER CAP (SET OF 4)	3	EA	
94	33556	IGNITER SHORT, HOT POINT	2	EA	
NI	CC36	36" GRILL COVER BUILT-IN	1	EA	
NI	CC36F	36" GRILL COVER FREESTANDING	1	EA	
NI	CC36FCB	36" GRILL COVER FREESTANDING WITH SIDE BURNER	1	EA	
NI	20011	DRIP PAN, PORCELAIN	1	EA	
NI	90126	WINDSCREEN 36"	1	EA	
NI	LIJ36	36" INSULATED JACKET	1	EA	