

8 7 6 5 4 3 2 1

F  
E  
D  
C  
B  
A

10982.00 Glass Support Front 30

S11462.00 CTI304 Glass Replacement Kit  
Service Only

10999.00 Extrusion 30"

10975.00 Glass Windcrest 30

10850.00 Induction CTL LH

10947.00 Ribbon Cable With-MICAO

10981.00 Glass Support Side 30,36

10850.02 Induction CTL RH

11066.00 Terminal Block

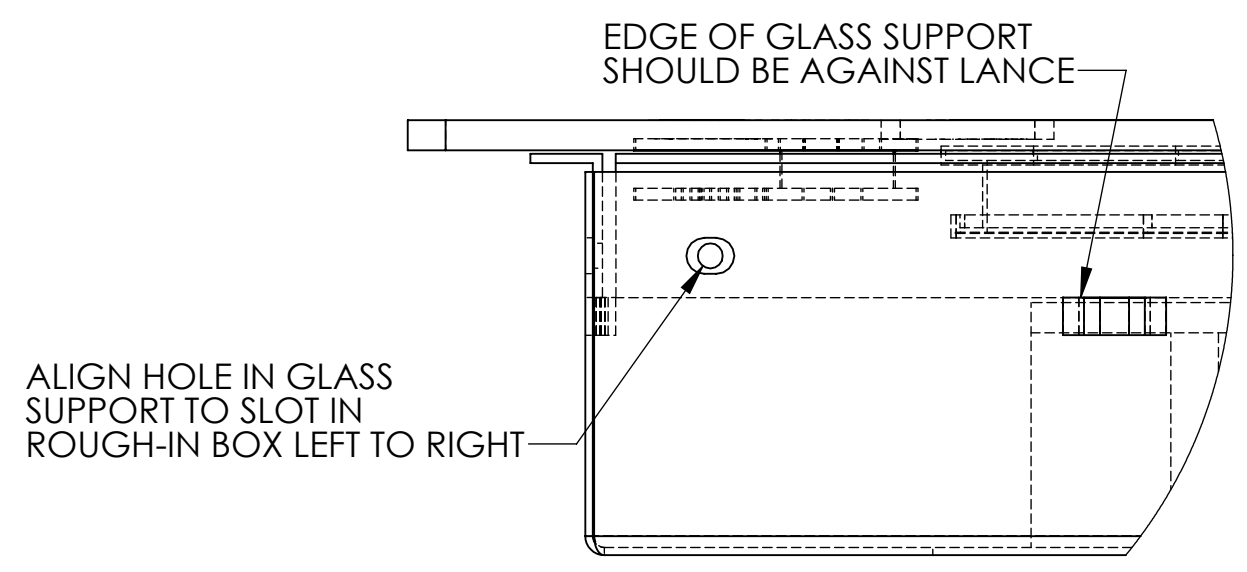
10851.02 Generator Dual

10851.02 Generator Dual

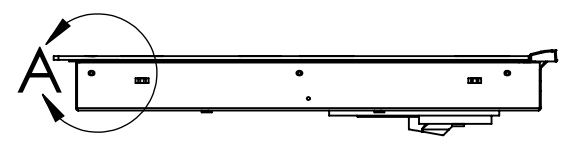
10985.00 Rough-In Box 30

10406.00 Conduit Connector

10984.00 Conduit Bracket 30,36

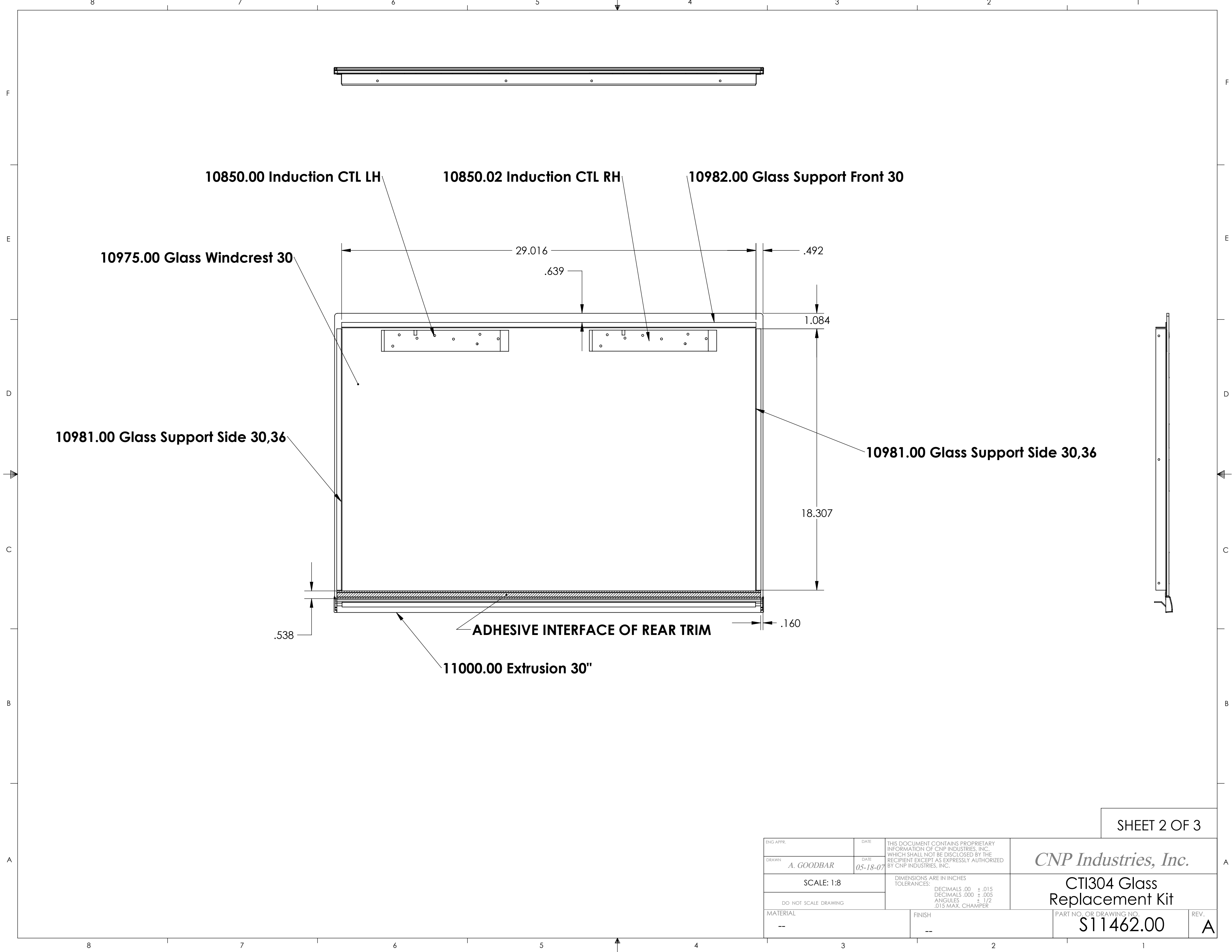


DETAIL A  
SCALE 1:1



ENG. APPR.	DATE	THIS DOCUMENT CONTAINS PROPRIETARY INFORMATION OF CNP INDUSTRIES, INC. WHICH SHALL NOT BE DISCLOSED BY THE RECIPIENT EXCEPT AS EXPRESSLY AUTHORIZED BY CNP INDUSTRIES, INC.	<b>CNP Industries, Inc.</b>
DRAWN <i>A. GOODBAR</i>	DATE 11-22-04		
SCALE: 1:8		DIMENSIONS ARE IN INCHES TOLERANCES: DECIMALS .00 ± .015 DECIMALS .000 ± .005 ANGLES ± 1/2 .015 MAX. CHAMFER	<b>CTI304D Assembly</b>
DO NOT SCALE DRAWING			PART NO. OR DRAWING NO.
MATERIAL	FINISH		

8 7 6 5 4 3 2 1



SHEET 2 OF 3

ENG APPR.	DATE	THIS DOCUMENT CONTAINS PROPRIETARY INFORMATION OF CNP INDUSTRIES, INC. WHICH SHALL NOT BE DISCLOSED BY THE RECIPIENT EXCEPT AS EXPRESSLY AUTHORIZED BY CNP INDUSTRIES, INC.	<b>CNP Industries, Inc.</b>
DRAWN <i>A. GOODBAR</i>	DATE <i>05-18-07</i>		
SCALE: 1:8		DIMENSIONS ARE IN INCHES TOLERANCES: DECIMALS .00 ± .015 DECIMALS .000 ± .005 ANGLES ± 1/2 .015 MAX. CHAMFER	<b>CTI304 Glass Replacement Kit</b>
DO NOT SCALE DRAWING			
MATERIAL --	FINISH --	PART NO. OR DRAWING NO. <b>S11462.00</b>	REV. <b>A</b>

