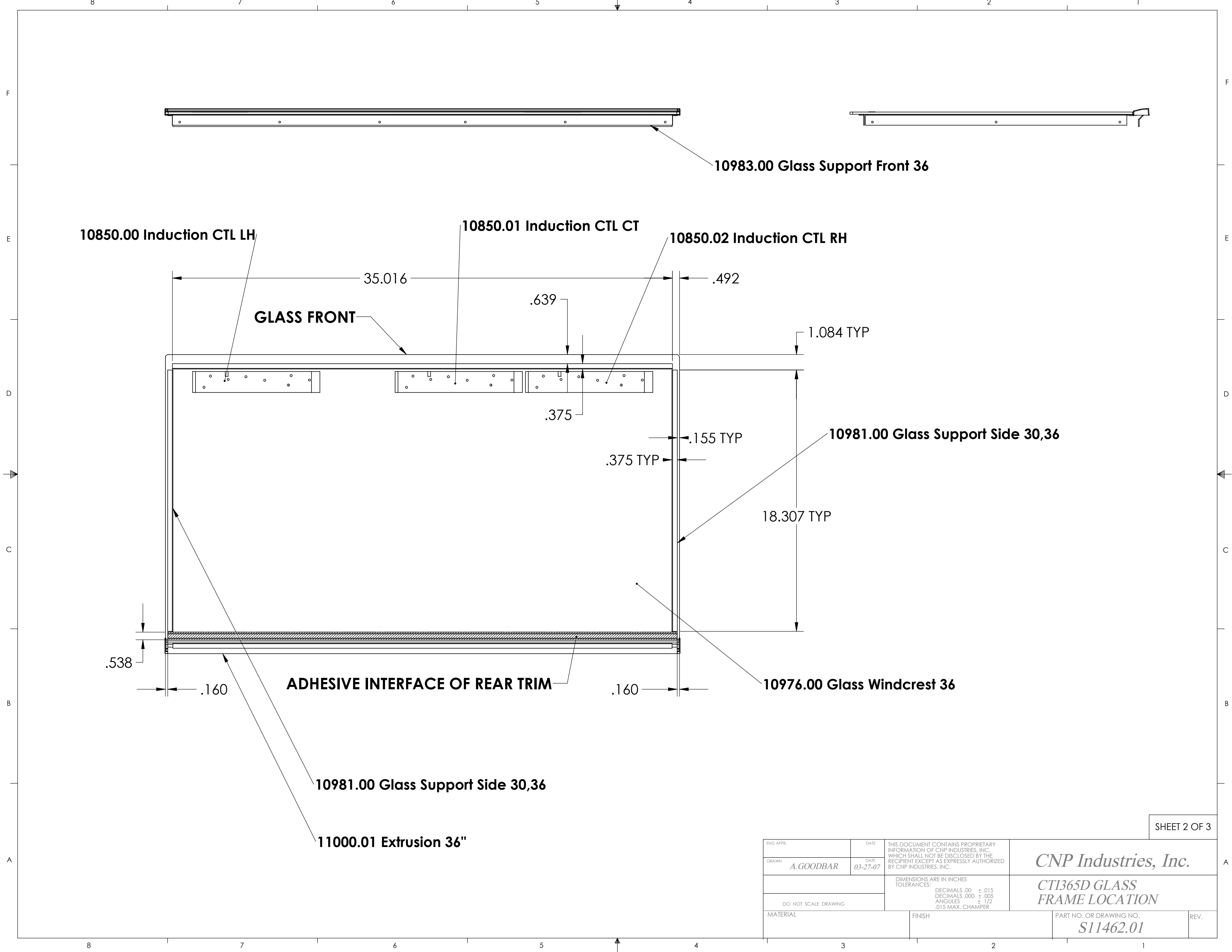


ENG. APPR.	DATE	THIS DOCUMENT CONTAINS PROPRIETARY INFORMATION OF CNP INDUSTRIES, INC. WHICH SHALL NOT BE DISCLOSED BY THE RECIPIENT EXCEPT AS EXPRESSLY AUTHORIZED BY CNP INDUSTRIES, INC.	<b>CNP Industries, Inc.</b>
DRAWN <i>A. GOODBAR</i>	DATE <i>11-08-06</i>		
SCALE: 1:8		DIMENSIONS ARE IN INCHES TOLERANCES: DECIMALS .00 ± .015 DECIMALS .000 ± .005 ANGLES ± 1/2 .015 MAX. CHAMFER	<b>CTI365D Assembly</b>
DO NOT SCALE DRAWING			PART NO. OR DRAWING NO. <b>CTI365</b>
MATERIAL	FINISH		



ENG. APPR.	DATE	THIS DOCUMENT CONTAINS PROPRIETARY INFORMATION OF CNP INDUSTRIES, INC. WHICH SHALL NOT BE DISCLOSED BY THE RECIPIENT EXCEPT AS EXPRESSLY AUTHORIZED BY CNP INDUSTRIES, INC.	<b>CNP Industries, Inc.</b>	
DRAWN <i>A. GOODBAR</i>	DATE <i>03-27-07</i>			
DO NOT SCALE DRAWING		DIMENSIONS ARE IN INCHES TOLERANCES: DECIMALS .00 ± .015 DECIMALS .000 ± .005 ANGLES ± 1/2 .015 MAX. CHAMFER	<b>CTI365D GLASS FRAME LOCATION</b>	
MATERIAL	FINISH		PART NO. OR DRAWING NO. <b>S11462.01</b>	REV.

