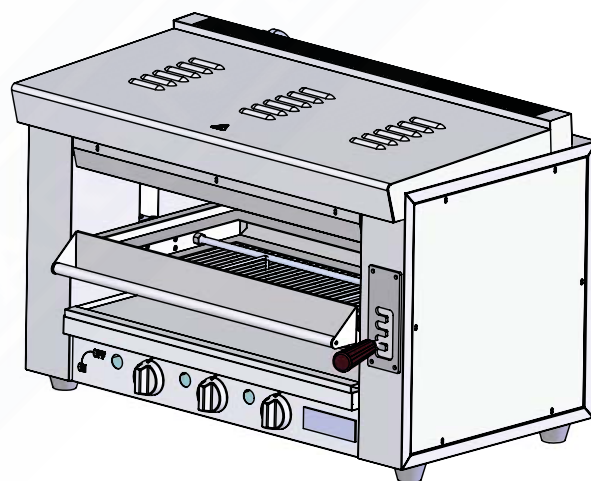
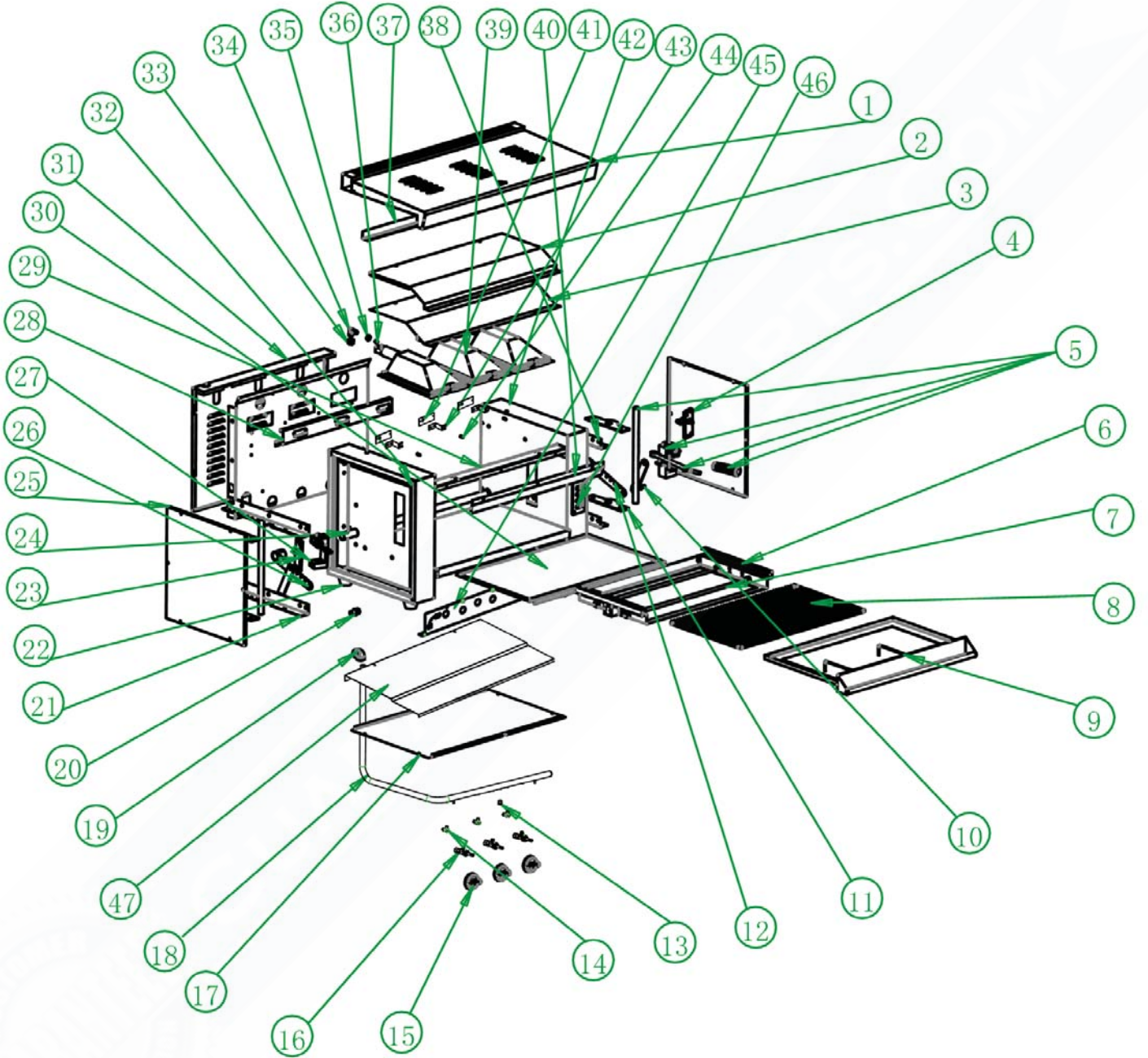


# INSTRUCTION MANUAL

## Gas Salamander



# Parts Diagram for the Gas Salamander



Drawing Number	Part Numbers	Description	Quantity
1		Top cover plate	1
2		Top cotton pressure plate	1
3		Chamber top plate	1
4		Right sliding sleeve cover plate	1
5	SAL-5-1	Right sliding assembly	1
6		Lifting assembly	1
7		Screw	2
8		Rack	1
9	SAL-9	Rack supporting assembly	1
10		Shaft pin	2
11		Shaft plate	4
12		Right arm assembly	1
13		Testing plug screw	1
14		NG/LPG Adjusting Valve	3
15		Zinc-alloy knob	3
16	SALCH-16	Gas valve	3
17		Gas inlet pipe	1
18		Bottom plate	1
19		1/2 elbow	1
20		1/2 copper connector	1
21		Left strengthen plate	2
22	SALCH-22	Rubber foot	4
23		Left sliding sleeve cover plate	1
24		Connecting shaft	1
25		Left/Right side sealing plate	2
26	SAL-26	Left arm assembly	1
27		Left sliding assembly	1
28		Probe supporting plate	1
29		Front beam	1
30		Oil tray	1
31		Rear sealing plate	1
32		Left side plate	1
33		Pipe connecting screw	3
34	SALCH-34	Nozzle holder	3
35		Flat nut	3
36		Nozzle	6
37		Rear beam	1
38		Right strengthen plate	2
39		Burner assembly	3
40		Baffle plate	1
41		Pilot Bracket	3
42		Right Side Plate	1
43		Fixed Plate	3
44		Pilot	3
45		Front panel	1
46		Gear plate	1
47		Cotton Insulation Plate	1