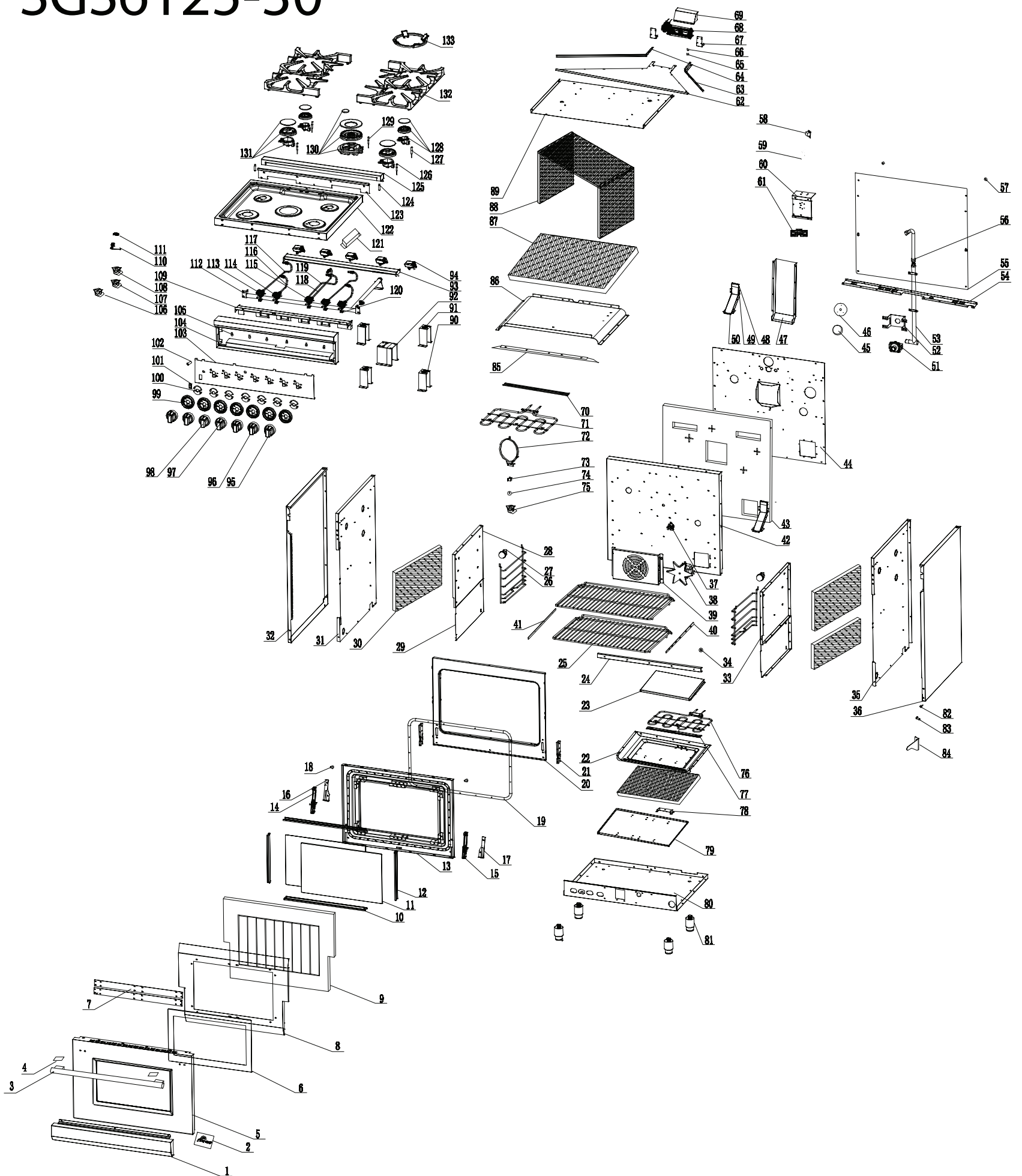


FFSGS6125-30



FFSGS6125-30

No.	Material Name	Material Code	Quantity
1	30" drawer panel	G30X01-120102Z	1
2	metal logo	G36R05-020010	1
3	30" handle	G30R04-101900	1
4	handle rubber mat	G36R03-100700	2
5	30" door stainless steel cover	G30R03-100401Z	1
6	door outer glass	G30R03-101100	1
7	30" door outer glass black pressing plate	G30R03-101400-02	2
8	30" door insulation plate	G30X03-101401	1
9	30" door glass wool	G30X03-103500	1
10	door inner glass top/down stip	G30X03-101501	2
11	30" inner door glass	G30R03-100500	2
12	door inner glass R/L strip	G36X03-101601	2
13	30" door blue enameled component	G30R03-100602Z	1
14	30" door hinge L	G30R03-110000	1
15	30" door hinge R	G30R03-110010	1
16	door strengthen part L	G36X03-101001	1
17	door strengthen part R	G36X03-101000	1
18	door round rubber mat	EM265A-109000	2
19	30" door seal bar	G48R03-071200	1
20	30" front panel	G30R03-070100Z	1
21	door hinge mount	G36X03-110000-1	1
22	30" cavity down blue enameled plate	C30X03-070704Z	1
23	30" oil baffle plate	C30X04-215102	1
24	30" cavity strengthen part	G30X03-070200	1
25	30" baking rack	G30R05-071900	2
26	side rack X01 series	G36X01-073800	2
27	lamp	G36X03-180100	2
28	cavity top left side blue enameled plate	G36X04-070509	1
29	cavity downside plate	G36X03-070400	2
30	cavity top left glass wool	G36X03-073300	2
31	left outside plate inside component	G36R03-071101Z	1
32	left outside plate X01 series	G36X01-071000	1
33	cavity top right side blue enameled plate	G36X04-070508	1
34	side rack protect cover	G36X03-073900	8
35	right outside plate inside component	G36R03-071100Z	1
36	right outside plate X01 series	G36X01-071001	1
37	thermo-sensor fixed part	G20A01-031100	1
38	fan motor	G20A01-091501	1
39	fan motor cover	G20H08-091701	1
40	right slid rail X01 series	G36X01-120701	2

41	slide rail L X01 series	G36X01-120700	2
42	30" cavity blue enameled back plate	C48R05-070300	1
43	30" cavity back plate glass wool	G30X03-072900	1
44	30" cavity back insulation plate	C30R03-072200	1
45	fan motor glass wool	C36X03-072800	1
46	fan motor baffle plate	C36A01-073100	1
47	smoke outlet component	C36R05-075600	1
48	chimney outer plate	C36R03-074200	1
49	chimney inside plate	C36R03-074100	1
50	chimney fixed support	C36R03-074300	3
51	regulator	G36X03-034000	1
52	pressure adjustable valve fixed support	G36X03-034500	1
53	cavity back gas manifold	G36X03-030801	1
54	bottom fixed plate for baffle plate	C30R05-072400	1
55	30" baffle plate	C30X03-072001	1
56	3/4" corrugated pipe 170mm	G36X03-215300	1
57	anti-wall rubber mat	G36X03-212600	2
58	LED light transformer	G36R04-180305	1
59	power cord	G20A14-160100	1
60	safety valve big support	G36X03-076600	1
61	power cord terminal	E20F01-106400	1
62	Wind board	C30R05-075000	1
63	Right side plate for wind board	C30R05-075100	1
64	Left side plate for wind board	C30R05-075200	1
65	Thermo-controller 140	E24F01-076200	1
66	Thermo-controller 50	C36R05-076200	1
67	cooling fan fixed support	C36X04-075400	2
68	cooling fan	C36R05-200900	1
69	fan heat insulation cover	C36X04-075300	1
70	heat element cushion plate-2	C36X04-080600	1
71	broil heat element (inside+outside)	C36R05-091000	1
72	back heat element	C20A01-091602	1
73	wire clamp	G36X03-072300	2
74	ground piece	G36R05-080700	2
75	wires	C30R05-180300	1
76	30" oven bottom heat element	C30R05-091200	1
77	heat element cushion plate-1	C30X04-080600	1
78	cavity bottom heat element ground support	C36X04-080700	1
79	30" drawer insulation plate	C30X04-072100	1
80	30" bottom plate	G30R05-071800	1
81	2.5" oven legs	G36R05-071500	4
82	drawer panel fixed screw	G36X03-130100	2

83	screw for anti-tip step	G36X03-111000	1
84	anti-tip support X01 series	G36X01-212501	1
85	30" front panel strip	G30X03-214500	1
86	30" cavity top plate	C30R05-070600Z	1
87	30" cavity bottom plate glass wool	G30X01-036000	2
88	30" cavity structure frame glass wool	G30X03-070800	1
89	30" cavity insulation plate	C30R03-074500Z	1
90	top burner support-1	C36R03-170600	2
91	top burner support-2	G36R03-170600	2
92	30" cooktop back support	G30X03-022000	1
93	/	/	/
94	ignition	G36R03-170100	5
95	knob for double gas outlets	G36R04-030101	1
96	knob for single gas outlet	G36R04-030100	4
97	knob for oven function	C36R05-030105	1
98	knob for oven temperature setting	C36R05-030101	1
99	knob ring R04	G36R04-030200	7
100	knob shining PCB	G36R04-031000	7
101	switch with lock-red	G48X03-170200	1
102	red indicator	G36X03-031000-7	1
103	30" control panel	C30R04-030300	1
104	30" control panel inner plate	C30R04-032300Z	1
105	red LED light	G36X04-031000-7	7
106	30" wires for knobs	C30R05-180303	1
107	30" wires for LED light	C30R05-180302	1
108	wires for LED light transformer	G36R04-180301	1
109	30" cooktop front support	C30R03-022100	1
110	thermo-control component switch	C36R05-030900	1
111	switch 5+0	C36R05-170800	1
112	30" control panel gas manifold	C30R05-030700	1
113	top valve 0.62	C36R05-030401	2
114	top valve 0.68	C36R05-030403	2
115	main gas valve 0.68 & 0.27	C36R04-030400	1
116	L/F Al. pipe	G36R03-020700	2
117	R/R Al. pipe	G36R03-020400	2
118	30" M/F main Al. pipe	G30R05-020300	1
119	30" M/R support Al. pipe	G30R05-020200	1
120	top valve support	G36X03-030500	5
121	magic eye switch	G36R04-170200	1
122	30" cooktop plate-1	G30R05-020100	1
123	30" cooktop back connection plate	G30R04-073600	1
124	backsplash bolt	G36X03-110800	2

125	30" backsplash component	G30R04-011500Z	1
126	top burner spark plug rear 660	G36R03-170501	2
127	top burner spark plug front 380	G36R03-170500	2
128	9,000btu burner	G36R03-040000	2
129	top burner spark plug 700	G36R04-170501	1
130	20,000btu burner	G36R03-040300	1
131	15,000btu burner	G36R03-040100	2
132	30" cast iron grates	G30R04-021500	2
133	pan support	G48R03-021400	1
134	ignition support (3)	G36R03-212300	1
135	ignition support (2)	G48R03-212300	1
136	screw nut	BZ-0000000909	4