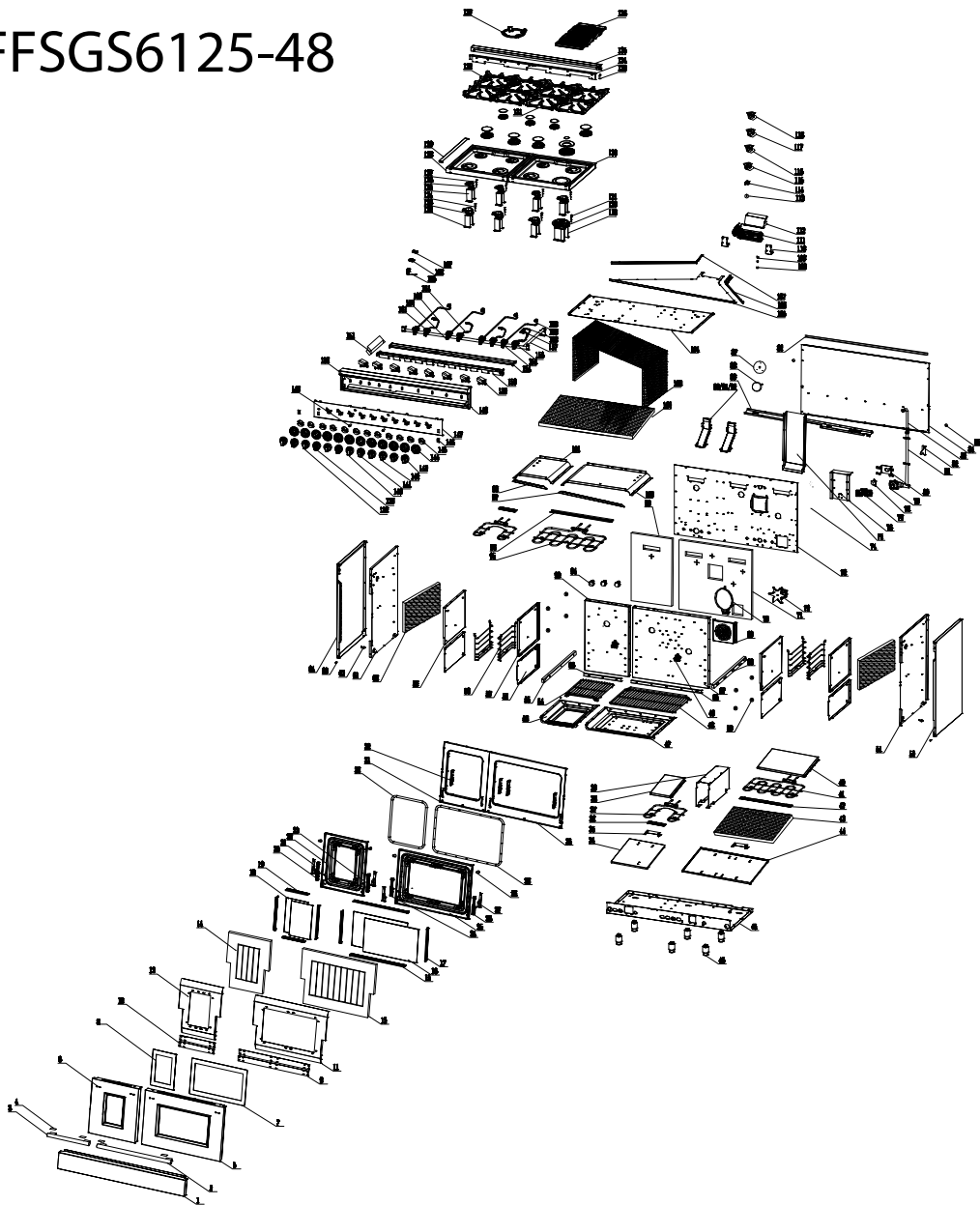


FFSGS6125-48



FFSGS6125-48

No.	Material Name	Material Code	Quantity
1	48" drawer panel	G48X01-120102Z	1
2	handle	G30R04-101900	1
3	18" handle	G18R04-101900	1
4	handle rubber mat	G36R03-100700	4
5	door stainless steel cover	G48R03-100401	1
6	18" door stainless steel cover	G18R03-100401	1
7	door outer glass	G30R03-101100	1
8	18" door outer glass	G18R03-101100	1
9	door outer glass black pressing plate	G30R03-101400-02	2
10	18" door outer glass black pressing plate	G18R03-101400-02	2
11	door insulation plate	G30X03-101401	1
12	18" door insulation plate	G18X03-101401	1
13	door glass wool	G30X03-103500	1
14	18" door glass wool	G18X03-103500	1
15	door inner glass top/down stip	G30X03-101501	2
16	innder door glass	G30R03-100500	2
17	door inner glass R/L strip	G36X03-101601	4
18	18" innder door glass	G18R03-100500	2
19	18" door inner glass top/down stip	G18X03-101501	2
20	18" door hinge L	G18R03-110000	1
21	door strengthen part L	G36X03-101001	2
22	18" door blue enameled component	G18R03-100602Z	1
23	18" door hinge R	G18R03-110010	1
24	door hinge L	G30R03-110000	1
25	door blue enameled component	G30R03-100602Z	1
26	door hinge R	G30R03-110010	1
27	door strengthen part R	G36X03-101000	2
28	door round rubber mat	EM265A-109000	4
29	door seal bar	G48R03-071200	1
30	18" door seal bar	G18R03-071200	1
31	18" front panel	G18R03-070100Z	1
32	door hinge mount	G36R03-110010-1	4
33	front panel	G48R03-070100Z	1
34	18" drawer insulation plate	C18X04-072100	1
35	cavity bottom heat element ground support	C36X04-080700	1
36	18" heat element cushion plate	C18X04-080600	2
37	18" heat element (top & down) 1700W	C18R05-091000	2
38	18" oil baffle plate	C18X04-215102	1
39	48" U shape downside plate	G48X03-070400	1
40	oil baffle plate	C30X04-215102	1

41	oven bottom heat element 2000W	C30R05-091200	1
42	heat element cushion plate	C30X04-080600	1
43	cavity bottom plate glass wool	G30X01-036000	1
44	drawer insulation plate	C30X04-072100	1
45	48" bottom plate	G48R05-071800	1
46	2.5" oven legs	G36R05-071500	6
47	cavity down blue enameled plate	C30X03-070704Z	1
48	baking rack	G30R05-071900	2
49	thermo-sensor fixed part	G20A01-031100	2
50	side rack protect cover	G36X03-073900	16
51	right outside plate inside component	G36R03-071100Z	1
52	right outside plate X01 series	G36X01-071001	1
53	18" cavity down blue enameled plate	C18X03-070704Z	1
54	18" baking rack	G18R05-071900	2
55	slide rail L X01 series	G36X01-120700	4
56	cavity downside plate	G36X03-070400	2
57	48" cavity top right side blue enameled plate	G36X04-070508	2
58	side rack X01 series	G36X01-073800	4
59	48" cavity top left side blue enameled plate	G36X04-070509	2
60	cavity top left glass wool	G36X03-073300	6
61	left outside plate inside component	G36R03-071101Z	1
62	screw for anti-tip step	G36X03-111000	1
63	drawer panel fixed screw	G36X03-130100	2
64	left outside plate X01 series	G36X01-071000	1
65	cavity strengthen part	G30X03-070200	1
66	18" cavity strengthen part	G18X03-070200	1
67	cavity blue enameled back plate	C48R05-070300	1
68	right slid rail X01 series	G36X01-120701	4
69	fan motor cover	G20H08-091701	1
70	back heat element	C20A01-091602	1
71	cavity back plate glass wool	G30X03-072900	1
72	fan motor	G20A01-091501	1
73	cavity back insulation plate	C48R05-072200	1
74	power cord	G20A14-160100	1
75	smoke outlet component	C36R05-075600	1
76	ignition support part	G36X03-212300	1
77	power cord terminal	E20F01-106400	1
78	LED light transformer	G36R04-180305	1
79	regulator	G36X03-034000	1
80	pressure adjustable valve fixed support	G36X03-034500	1
81	cavity back gas manifold	G36X03-030801	1
82	anti-tip support X01 series	G36X01-212501	1

83	3/4" corrugated pipe 170mm	G36X03-215300	1
84	baffle plate	C48R05-072001	1
85	anti-wall rubber mat	G36X03-212600	2
86	48" baffle plate strengthen part	G48X03-072300	1
87	fan motor baffle plate	C36A01-073100	1
88	fan motor glass wool	C36X03-072800	1
89	48" bottom fixed plate for baffle plate	C48R05-072400	1
90	chimney outer plate	C36R03-074200	2
91	chimney inside plate	C36R03-074100	2
92	chimney fixed support	C36R03-074300	6
93	18" cavity blue enameled back plate	C18R05-070300	1
94	lamp	G36X03-180100	3
95	broil heat element (inside+outside)	C36R05-091000	1
96	heat element cushion plate-2	C36X04-080600	1
97	front panel strip	G30X03-214500	1
98	18" front panel strip	G18X03-214500	1
99	18" cavity back plate glass wool	G18X03-072900	1
100	cavity top plate	C30R05-070600Z	1
101	18" cavity top plate	C18R03-070600Z	1
102	48" cavity top glass wool	G48X03-036000	1
103	cavity structure frame glass wool	G48X03-070800	1
104	48" cavity insulation plate	C48R05-074500Z	1
105	Wind board	C48R05-075000	1
106	Right side plate for wind board	C48R05-075100	1
107	Left side plate for wind board	C48R05-075200	1
108	Thermo-controller 140	E24F01-076200	2
109	Thermo-controller 50	C36R05-076200	1
110	cooling fan fixed support	C36X04-075400	2
111	cooling fan	C36R05-200900	1
112	fan heat insulation cover	C36X04-075300	1
113	ground piece	G36R05-080700	2
114	wire clamp	G36X03-072300	3
115	48" wires	C48R05-180300	1
116	48" wires for knobs	C48R05-180303	1
117	48" wires for LED light	C48R05-180302	1
118	wires for LED light transformer	G36R04-180301	1
119	/	/	/
120	20,000btu burner	G36R03-040300	1
121	top burner spark plug 700	G36R04-170501	1
122	top burner support-1	C36R03-170600	3
123	15,000btu burner	G36R03-040100	4
124	top burner spark plug rear 660	G36R03-170501	4

125	top burner support-2	G36R03-170600	3
126	9,000btu burner	G36R03-040000	3
127	top burner spark plug front 380	G36R03-170500	3
128	cooktop plate-1	G24R03-020100	1
129	48" cooktop decoration bar	G48R04-025000	1
130	48" cooktop plate	G48R03-020100	1
131	48" cast iron grates	G48R04-021400	1
132	cast iron grates	G36R04-021400	3
133	backsplash bolt	G36X03-110800	2
134	cooktop back connection plate	G48R04-073600	1
135	48" backsplash component	G48R04-011500Z	1
136	griddle	G36R03-021400	1
137	pan support	G48R03-021400	1
138	18" knob for oven temperature setting	C36R05-030100	1
139	18" knob for oven function	C36R05-030104	1
140	48" knob for oven temperature setting	C36R05-030103	1
141	knob for oven function	C36R05-030105	1
142	knob for single gas outlet	G36R04-030100	7
143	knob for double gas outlets	G36R04-030101	1
144	knob ring R04	G36R04-030200	12
145	knob shining PCB	G36R04-031000	12
146	switch with lock-red	G48X03-170200	2
147	48" control panel	C48R04-030300	1
148	48" control panel inner plate	C48R04-032300Z	1
149	red indicator	G36X03-031000-7	2
150	red LED light	G36X04-031000-7	12
151	LED lights manual switch	G36R05-170200	1
152	cooktop front support plate	G36X03-022200	1
153	48" cooktop front support	C48R05-022100	1
154	48" cooktop back support	G48R04-022000	1
155	top valve 0.68	C36R05-030403	4
156	main gas valve 0.68 & 0.27	C36R04-030400	1
157	48" control panel gas manifold	C48R05-030700	1
158	R/F main Al. pipe	G36R03-020500	1
159	R/F support Al. pipe	G36R03-020600	1
160	R/R Al. pipe	G36R03-020400	4
161	top valve 0.62	C36R05-030401	3
162	top valve support	G36X03-030500	8
163	L/F Al. pipe	G36R03-020700	1
164	M/F Al. pipe	G36R03-020300	2
165	thermo-control component switch	C36R05-030900	2
166	switch 3+0	C18R05-170800	1

167	switch 5+0	C36R05-170800	1
168	ignition	G36R03-170100	8
169	ignition support (2)	G48R03-212300	4
170	screw nut	BZ-0000000909	6