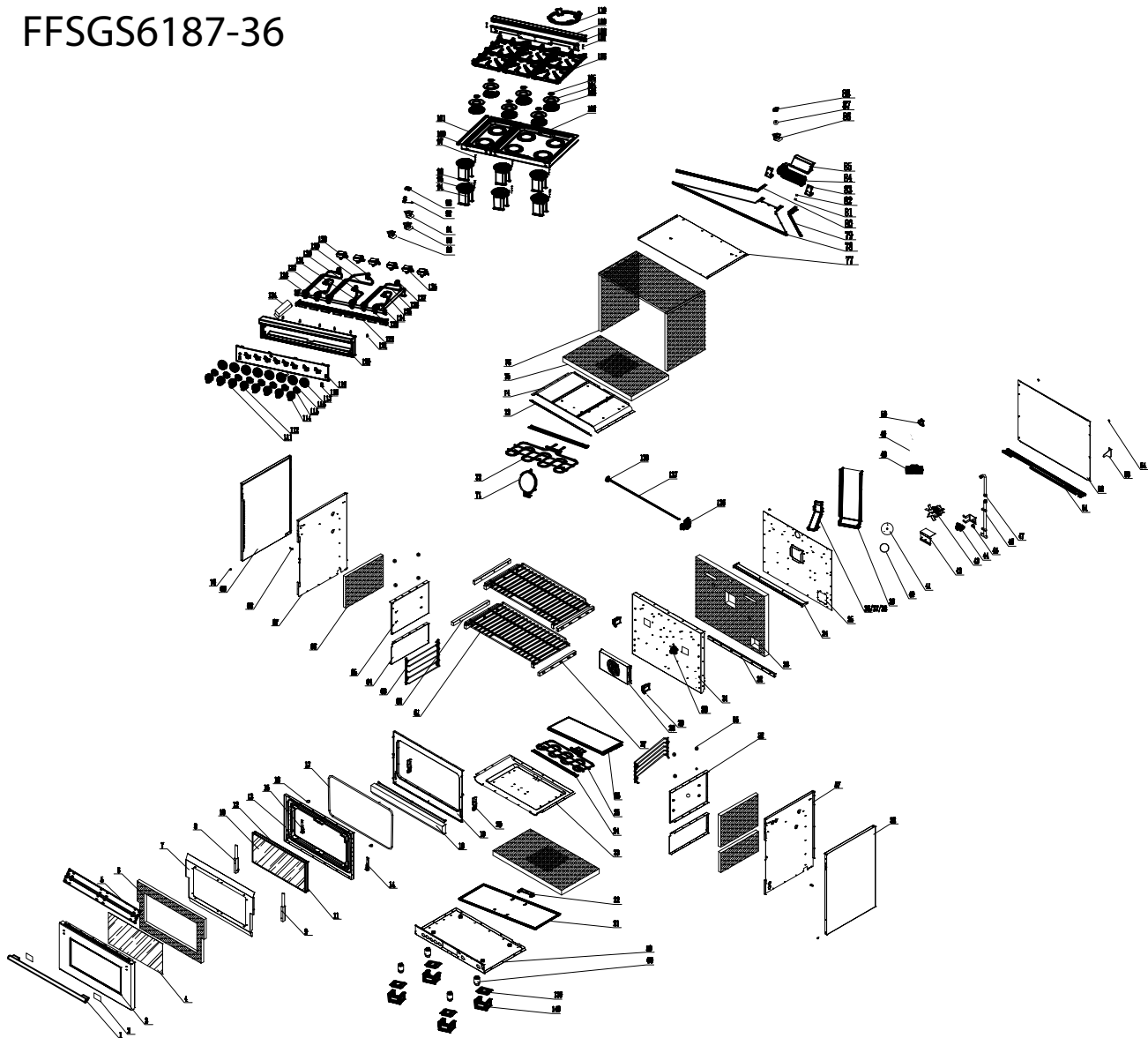


FFSGS6187-36



## FFSGS6187-36

No.	Material Name	Material Code	Quantity
1	36" handle	G36R04-101900	1
2	handle rubber mat	G36R03-100700	2
3	36" door stainless steel cover-R03-2	G36R03-100401Z	1
4	36" door outer glass	G36R03-101100	1
5	36" door outer glass black pressing plate	G36R03-101400-02	2
6	36" door glass wool	G36X03-103500	1
7	36" door insulation plate	G36X03-101401	1
8	36" door hinge L	G36R03-110000	1
9	36" door hinge R	G36R03-110010	1
10	36" innder door glass	G36R03-100500	2
11	door inner glass R/L strip	G36X03-101601	2
12	36" door inner glass top/down stip	G36X03-101500	2
13	36" door blue enameled component	G36R03-100602Z	1
14	door strengthen part R	G36X03-101000	1
15	door strengthen part L	G36X03-101001	1
16	door round rubber mat	EM265A-109000	2
17	36" door seal bar	G36R03-071200	1
18	36" drawer panel-X01	G36X01-120102Z	1
19	36" front panel	G36R03-070100Z	1
20	door hinge mount	G36X03-110000-1	2
21	36" drawer insulation plate-X04-DF	C36X04-072100	1
22	cavity bottom heat element ground support	C36X04-080700	1
23	36" cavity down blue enameled plate-DF	C36X03-070704Z	1
24	heat element cushion plate-1	C36X04-080600	2
25	36" oven bottom heat element	C36R05-091200	1
26	36" oil baffle plate-X04-blue enameled	C36X04-215102	1
27	right slid rail X01 series	G36X01-120701	3
28	fan motor cover-H08-1	G20H08-091701	1
29	Oven lamp-square shape	G36X04-180100	2
30	thermo-sensor fixed board	G20A01-031100	1
31	36" cavity blue enameled back plate-R04-DF	C36R04-070300	1

32	36" cavity strengthen part	G36X03-070200	1
33	36" cavity back plate glass wool-X03	G36X03-072900	1
34	36" cooktop back support	G36X03-022000	1
35	36" cavity back insulation plate-DF	C36R05-072200	1
36	chimney outer plate	C36R03-074200	1
37	chimney inside plate	C36R03-074100	1
38	chimney fixed support	C36R03-074300	3
39	36" back ventilation channel	C36R05-075600	1
40	fan motor glass wool	G36X03-072800	1
41	fan motor baffle plate-A01	C36A01-073100	1
42	safety valve big support	G36X03-076600	1
43	fan motor-1	G20A01-091501	1
44	regulator	G36X03-034000	1
45	pressure adjustable valve fixed support	G36X03-034500	1
46	cavity back gas manifold-1	G36X03-030801	1
47	3/4" corrugated pipe 170mm	G36X03-215300	1
48	power cord terminal	E20F01-106400	1
49	power cord #14	G20A14-160100	1
50	LED light transformer	G36R04-180305	1
51	36" bottom fixed plate for baffle plate	C36R05-072400	1
52	36" baffle plate-DF	C36X03-072001	1
53	anti-tip support X01 series	G36X01-212501	1
54	anti-wall rubber mat	G36X03-212600	2
55	side rack protect cover	G36X03-073900	8
56	36" cavity top right side blue enameled plate	G36R04-070500Z	1
57	right outside plate inside component	G36R03-071100Z	1
58	right outside plate X01 series	G36X01-071001	1
59	36" bottom plate-R03-1	G36R04-071800	1
60	oven leg	G36X03-071500	4
61	36" baking rack-stainless steel	G36R05-071901	3
62	slide rail L X01 series	G36X01-120700	3
63	36" side rack-stainless steel	G36X01-073801	2
64	cavity downside plate	G36X03-070400	2

65	36" cavity top left side blue enameled plate	G36R04-070501	1
66	36" cavity top left glass wool	G36X03-073300	2
67	left outside plate inside component	G36R03-071101Z	1
68	screw for anti-tip step	G36X03-111000	1
69	left outside plate X01 series	G36X01-071000	1
70	drawer panel fixed screw	G36X03-130100	2
71	back heat element	C20A01-091602	1
72	broil heat element (inside+outside)	C36R05-091000	1
73	36" front panel strip	G36X03-214500	1
74	36" cavity top plate component-R05	C36R05-070600Z	1
75	36" cavity bottom plate glass wool	G36X03-036000	2
76	36" cavity structure frame glass wool	G36X03-070800	1
77	36" cavity insulation plate-R05-DF	C36R05-074500Z	1
78	36" Wind board	C36R05-075000	1
79	36" Right side plate for wind board	C36R05-075100	1
80	36" Left side plate for wind board	C36R05-075200	1
81	Thermo-controller 140	E24F01-076200	1
82	Thermo-controller 50	C36R05-076200	1
83	cooling fan fixed support	C36X04-075400	2
84	cooling fan	C36R05-200900	1
85	fan heat insulation cover	C36X04-075300	1
86	36" wires-R04-DF	C36R04-180300	1
87	ground piece	G36R05-080700	2
88	wire clamp	G36X03-072300	2
89	36" wires for LED knobs-DF	C36R05-180303	1
90	36" wires for LED light-R05	C36R05-180302	1
91	wires for LED light transformer	G36R04-180301	1
92	thermo-control component switch	C36R05-030900	1
93	switch 5+0	C36R05-170800	1
94	/	/	/
95	20,000btu burner-brass	G36R03-040301	6
103		G36R03-040302	6
104		G36R03-040203	6

105		G36R03-040204	6
96	top burner spark plug 400	G36R04-170505	2
97	top burner spark plug 700	G36R04-170501	4
98	/	/	/
99	/	/	/
100	12" cooktop plate-2	G12R04-020100	1
101	36" cooktop plate decoration strip	G36X03-025000	1
102	24" cooktop plate-2	G24R04-020100	1
106	36" cast iron grates-R04	G36R04-021400	3
107	backsplash bolt	G36X03-110800	2
108	36" cooktop back connection plate	G36R04-073600	1
109	36" backsplash component-R04	G36R04-011500Z	1
110	pan support	G48R03-021400	1
111	knob for oven temperature setting	C36R05-030101	1
112	36" knob for oven function-R05	C36R05-030105	1
113	/	/	/
114	knob for double gas outlets	G36R04-030101	6
115	knob shining PCB	G36R04-031000	8
116	red indicator	G36X03-031000-7	1
117	knob ring R04	G36R04-030200	8
118	48" switch with lock-black	G48X04-170200	2
119	36" control panel-R04-DF-2	C36R04-030301	1
120	36" control panel inner plate-R04-DF	C36R04-032300Z	1
121	red LED light	G36X04-031000-7	8
122	36" cooktop front support-R05-DF	C36R05-022100	1
123	top valve support	G36X03-030500	6
124	36" R/F support Al. pipe	G36R03-020600	2
125	36" R/F main Al. pipe	G36R03-020500	2
126	R/R support Al. pipe	G48R04-020500	2
127	R/R main Al. pipe	G48R04-020600	2
128	20,000btu burner back Al. pipe	C48R04-020400	1
129	M/L/R Al. pipe	C48R03-020200	1
130	M/F main Al. pipe	G36R04-020400	1

131	M/F support Al. pipe	G36R04-020300	1
132	main gas valve 0.68 & 0.27	C36R04-030400	6
133	36" control panel gas manifold-R05	C36R05-030700	1
134	magic eye switch	G36R04-170200	1
135	ignition support (2)	G48R03-212300	3
136	ignition	G36R03-170100	6
137	Rotisserie motor	G20A01-200101	1
138	rotisserie rod 770mm & rotisserie fork	G36R03-200500	1
139	roasted axis support	G20A01-200700	1
140	oven leg cover	G36X01-104000	4
141	oven leg coat	G36X01-071600	4
142	screw nut	BZ-0000000908	4