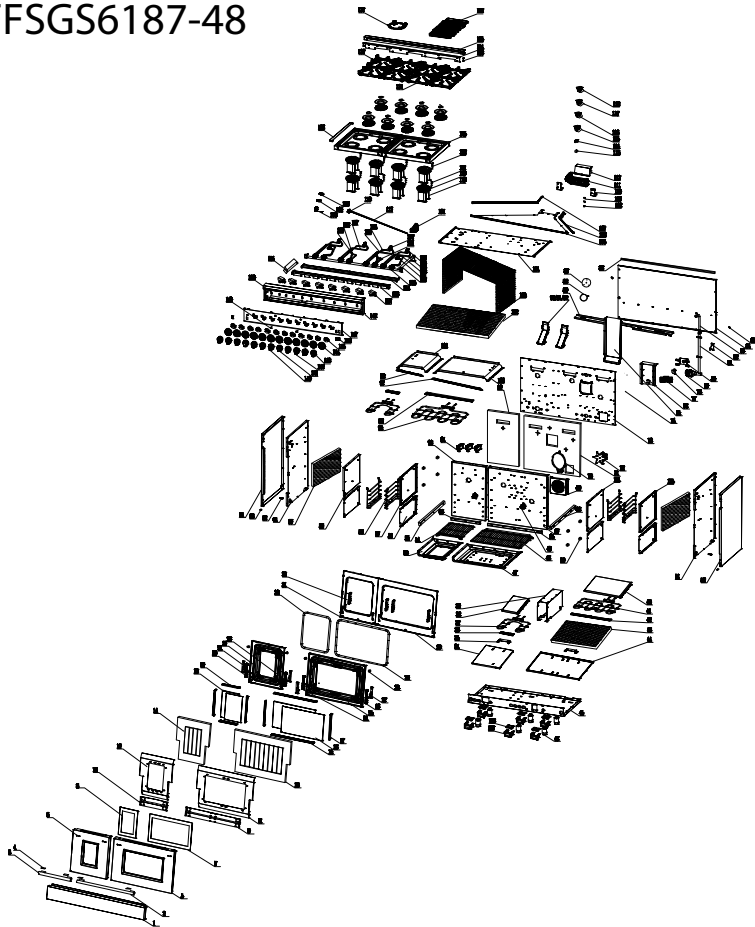


FFSGS6187-48



FFSGS6187-48

No.	Material Name	Material Code	Quantity
1	48" drawer panel-X01	G48X01-120102Z	1
2	30" handle	G30R04-101900	1
3	handle	G18R04-101900	1
4	handle rubber mat	G36R03-100700	4
5	30" door stainless steel cover-R03-2	G48R03-100401Z	1
6	18" door stainless steel cover-R03-2	G18R03-100401Z	1
7	30" door outer glass	G30R03-101100	1
8	18" door outer glass	G18R03-101100	1
9	30" door outer glass black pressing plate	G30R03-101400-02	2
10	18" door outer glass black pressing plate	G18R03-101400-02	2
11	30" door insulation plate	G30X03-101401	1
12	18" door insulation plate	G18X03-101401	1
13	30" door glass wool	G30X03-103500	1
14	18" door glass wool	G18X03-103500	1
15	30" door inner glass top/down stip	G30X03-101501	2
16	30" inner door glass	G30R03-100500	2
17	door inner glass R/L strip	G36X03-101601	4
18	18" inner door glass	G18R03-100500	2
19	18" door inner glass top/down stip	G18X03-101501	2
20	18" door hinge L	G18R03-110000	1
21	door strengthen part L	G36X03-101001	2
22	18" door blue enameled component	G18R03-100602Z	1
23	18" door hinge R	G18R03-110010	1
24	30" door hinge L	G30R03-110000	1
25	30" door blue enameled component	G30R03-100602Z	1
26	30" door hinge R	G30R03-110010	1
27	door strengthen part R	G36X03-101000	2
28	door round rubber mat	EM265A-109000	4
29	30" door seal bar	G48R03-071200	1
30	18" door seal bar	G18R03-071200	1
31	18" front panel	G18R03-070100Z	1

32	door hinge mount	G36R03-110000-1	4
33	front panel	G48R03-070100Z	1
34	18" drawer insulation plate-X04	C18X04-072100	1
35	cavity bottom heat element ground support	C36X04-080700	2
36	18" heat element cushion plate	C18X04-080600	2
37	18" heat element (top & down) 1700W	C18R05-091000	2
38	18" oil baffle plate-X04-blue enameled	C18X04-215102	1
39	48" oven U type burner downside plate	G48X03-070400	1
40	30" oil baffle plate-X04-blue enameled	C30X04-215102	1
41	30" oven bottom heat element	C30R05-091200	1
42	heat element cushion plate	C30X04-080600	1
43	30" cavity bottom plate glass wool-X01	G30X01-036000	1
44	drawer insulation plate	C30X04-072100	1
45	48" bottom plate-R03-1	G48R04-071800	1
46	oven leg	G36X03-071500	6
47	30" cavity down blue enameled plate-DF	C30X03-070704Z	1
48	30" baking rack-stainless steel	G30R05-071901	3
49	thermo-sensor fixed board	G20A01-031100	2
50	side rack protect cover	G36X03-073900	16
51	right outside plate inside component	G36R03-071100Z	1
52	right outside plate X01 series	G36X01-071001	1
53	18" cavity down blue enameled plate-DF	C18X03-070704Z	1
54	18" baking rack-stainless steel	G18R05-071901	3
55	slide rail L X01 series	G36X01-120700	6
56	cavity downside plate	G36X03-070400	2
57	48" cavity top right side blue enameled plate	G36X04-070508	1
58	36" side rack-stainless steel	G36X01-073801	4
59	48" cavity top left side blue enameled plate	G36X04-070509	1
60	36" cavity top left glass wool	G36X03-073300	6
61	left outside plate inside component	G36R03-071101Z	1
62	screw for anti-tip step	G36X03-111000	1
63	drawer panel fixed screw	G36X03-130100	2
64	left outside plate X01 series	G36X01-071000	1

65	30" cavity strengthen part	G30X03-070200	1
66	18" cavity strengthen part	G18X03-070200	1
67	30" cavity blue enameled back plate-R04-DF	C48R04-070300	1
68	right slid rail X01 series	G36X01-120701	6
69	fan motor cover-H08-1	G20H08-091701	1
70	back heat element	C20A01-091602	1
71	30" cavity back plate glass wool	G30X03-072900	1
72	fan motor-1	G20A01-091501	1
73	48" cavity back insulation plate-DF	C48R05-072200	1
74	power cord #14	G20A14-160100	1
75	36" back ventilation channel	C36R05-075600	1
76	ignition support	G36X03-212300	1
77	power cord terminal	E20F01-106400	1
78	LED light transformer	G36R04-180305	1
79	regulator	G36X03-034000	1
80	pressure adjustable valve fixed support	G36X03-034500	1
81	cavity back gas manifold-1	G36X03-030801	1
82	anti-tip support X01 series	G36X01-212501	1
83	3/4" corrugated pipe 170mm	G36X03-215300	1
84	baffle plate	C48R05-072001	1
85	anti-wall rubber mat	G36X03-212600	2
86	48" baffle plate strengthen part	G48X03-072300	1
87	fan motor baffle plate-A01	C36A01-073100	1
88	fan motor glass wool	G36X03-072800	1
89	48" bottom fixed plate for baffle plate-DF	C48R05-072400	1
90	chimney outer plate	C36R03-074200	2
91	chimney inside plate	C36R03-074100	2
92	chimney fixed support	C36R03-074300	6
93	18" cavity blue enameled back plate-R04-DF	C18R04-070300	1
94	Oven lamp-square shape	G36X04-180100	3
95	broil heat element (inside+outside)	C36R05-091000	1
96	heat element cushion plate-1	C36X04-080600	1
97	30" front panel strip	G30X03-214500	1

98	18" front panel strip	G18X03-214500	1
99	18" cavity back plate glass wool	G18X03-072900	1
100	30" cavity top plate component-R05	C30R05-070600Z	1
101	18" cavity top plate component-R03	C18R03-070600Z	1
102	48" cavity top glass wool-X03	G48X03-036000	1
103	cavity structure frame glass wool	G48X03-070800	1
104	48" cavity insulation plate-R05-DF	C48R05-074500Z	1
105	48" Wind board	C48R05-075000	1
106	48" Right side plate for wind board	C48R05-075100	1
107	48" Left side plate for wind board	C48R05-075200	1
108	Thermo-controller 140	E24F01-076200	2
109	Thermo-controller 50	C36R05-076200	1
110	cooling fan fixed support	C36X04-075400	2
111	cooling fan	C36R05-200900	1
112	fan heat insulation cover	C36X04-075300	1
113	ground piece	G36R05-080700	2
114	wire clamp	G36X03-072300	3
115	48" wires-R04-DF	C48R04-180300	1
116	48" wires for LED knobs-DF	C48R05-180303	1
117	48" wires for LED light-R05	C48R05-180302	1
118	wires for LED light transformer	G36R04-180301	1
119	/	/	/
120	20,000btu burner	G36R03-040300	8
121	top burner spark plug 400	G36R04-170505	2
122	top burner spark plug 700	G36R04-170501	6
123	ignition support (2)	G48R03-212300	4
124	ignition	G36R03-170100	8
125	24" cooktop plate-2	G24R04-020100	2
126	48" cooktop plate decoration strip	G48R04-025000	1
127	/	/	/
128	/	/	/
129	/	/	/
130	/	/	/

131	48" cast iron grates-R04	G48R04-021400	1
132	36" cast iron grates-R04	G36R04-021400	3
133	backsplash bolt	G36X03-110800	2
134	48" cooktop back connection plate	G48R04-073600	1
135	48" backsplash component-R04	G48R04-011500Z	1
136	griddle	G36R03-021400	1
137	pan support	G48R03-021400	1
138	/	/	/
139	/	/	/
140	knob for oven temperature setting	C36R05-030101	2
141	18" knob for oven function-R05	C36R05-030104	1
142	36" knob for oven function-R05	C36R05-030105	1
143	knob for double gas outlets	G36R04-030101	8
144	knob ring R04	G36R04-030200	12
145	knob shining PCB	G36R04-031000	12
146	48" switch with lock-black	G48X04-170200	3
147	48" control panel-R04-DF-2	C48R04-030301	1
148	48" control panel inner plate-R04-DF	C48R04-032300Z	1
149	red indicator	G36X03-031000-7	2
150	red LED light	G36X04-031000-7	12
151	magic eye switch	G36R04-170200	1
152	cooktop front support plate	G36X03-022200	1
153	48" cooktop front support-R05-DF	C48R05-022100	1
154	48" cooktop back support	G48R04-022000	1
155	main gas valve 0.68 & 0.27	C36R04-030400	8
156	48" control panel gas manifold-R05	C48R05-030700	1
157	36" R/F support Al. pipe	G36R03-020600	2
158	36" R/F main Al. pipe	G36R03-020500	2
159	36" R/R Al. pipe	G36R03-020400	2
160	R/R main Al. pipe	G48R04-020600	2
161	M/F Al. pipe	C36R03-020300	1
162	M/F main Al. pipe	G36R04-020400	1
163	M/R Al. pipe	C36R03-020200	1

164	20,000btu burner back Al. pipe	C48R04-020400	2
165	M/L/F Al. pipe	C48R03-020300	1
166	48" front Al. pipe-DF	C48R04-020500	1
167	M/L/R Al. pipe	C48R03-020200	1
168	thermo-control component switch	C36R05-030900	2
169	switch 3+0	C18R05-170800	1
170	switch 5+0	C36R05-170800	1
171	Rotisserie motor	G20A01-200101	1
172	rotisserie rod 618mm&rotisserie fork	G36R03-200501	1
173	roasted axis support	G20A01-200700	1
174	36" cavity top left side blue enameled plate	G36R04-070501	1
175	36" cavity top right side blue enameled plate	G36R04-070500Z	1
176	oven leg cover	G36X01-104000	6
177	oven leg coat	G36X01-071600	6
178	screw nut	BZ-0000000908	6