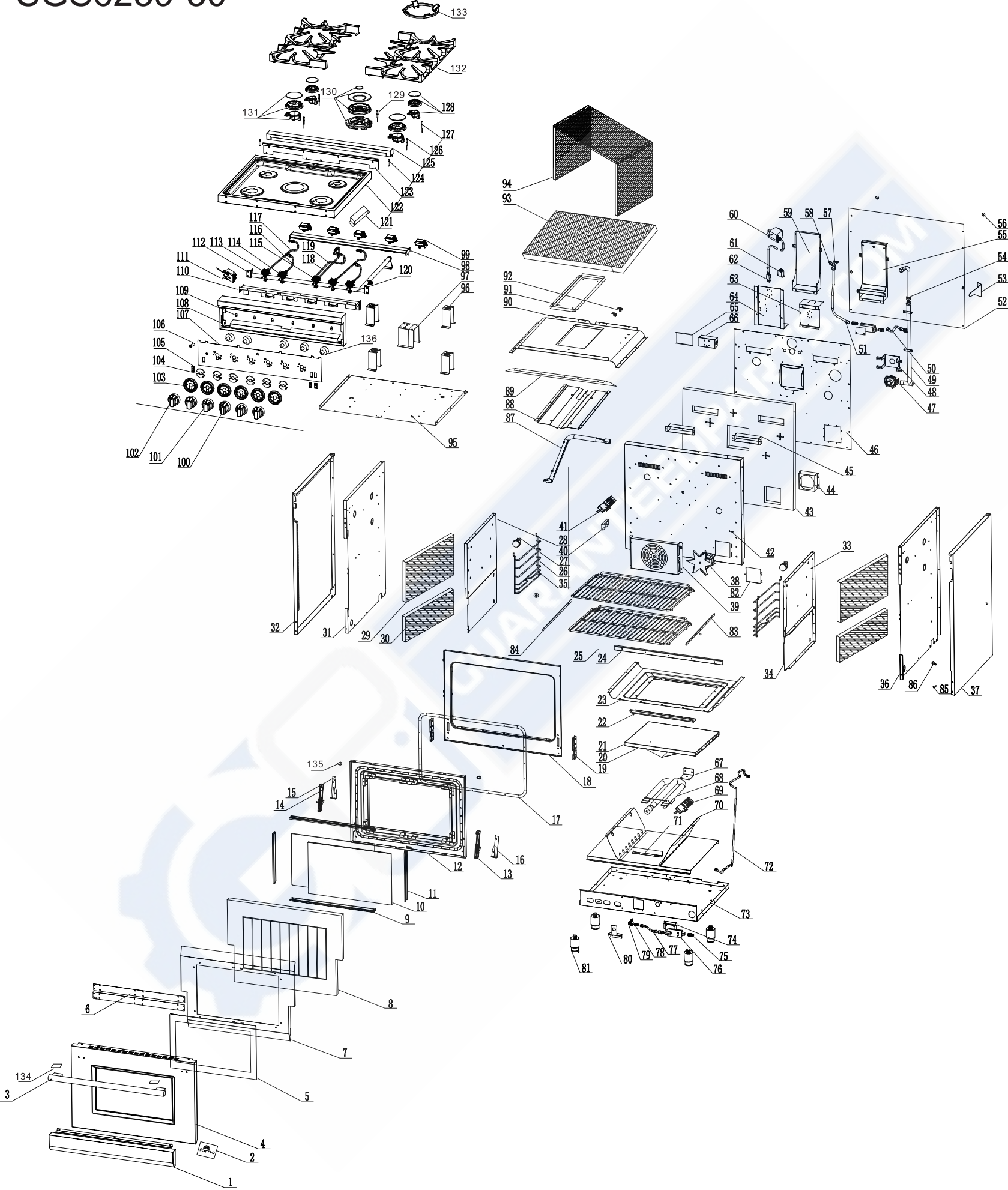


# FFSGS6239-30



FFSGS6239-30			
No.	Material Name	Material Code	Quantity
1	30" drawer panel	G30X01-120102-Z	1
2	metal logo	G36R03-020010	1
3	30" handle	G30R04-101900	1
4	30" door stainless steel cover	G30R03-100401	1
5	door outer glass	G30R03-101100	1
6	30" door outer glass black pressing plate	G30R03-101400-02	2
7	30" door insulation plate	G30X03-101401	1
8	30" door glass wool	G30X03-103500	1
9	door inner glass top/down strip	G30X03-101501	2
10	30" inner door glass	G30R03-100500	2
11	door inner glass R/L strip	G36X03-101601	2
12	30" door blue enameled component	G30R03-100602-Z	1
13	30" door hinge L	G30R03-110000	1
14	30" door hinge R	G30R03-110010	1
15	door strengthen part R	G36X03-101000	1
16	door strengthen part L	G36X03-101001	1
17	30" door seal bar	G48R03-071200	1
18	30" front panel	G30R03-070100-Z	1
19	door hinge mount	G36X03-110000-1	2
20	30" oven burner reflect board	G30X03-080900	1
21	30" down blue enameled tray	G30R07-210102	1
22	30" cavity down strengthen part	G30X03-070000	1
23	30" cavity down blue enameled plate	G30X03-070704-Z	1
24	30" cavity strengthen part	G30X03-070200	1
25	30" baking rack	G30R05-071900	2
26	side rack X01 series	G36X01-073800	2
27	lamp	G36X03-180100	2
28	cavity top right side blue enameled plate	G36X04-070508	1
29	cavity top left glass wool	G36X03-073300	2
30	cavity down left glass wool	G36X03-073000	2
31	left outside plate inside component	G36X03-071105-Z	1
32	left outside plate X01 series	G36X01-071000	1
33	cavity top left side blue enameled plate	G36X04-070509	1
34	cavity downside plate	G36X03-070400	2
35	side rack protect cover	G36X03-073900	8
36	right outside plate inside component	G36X03-071104-Z	1
37	right outside plate X01 series	G36X01-071001	1
38	fan motor	G20A01-091501	1
39	fan motor cover	G36X03-091701	1

40	grill burner spark plug support	G36X03-090600	1
41	oven cavity spark plug	G36X03-170300-1	2
42	30" cavity blue enameled back plate	G48X03-070303	1
43	30" cavity back plate glass wool	G30X03-072900	1
44	regulator cover	G48X03-034401	1
45	smoke outlet component	G36X03-075000-Z	2
46	30" cavity back insulation plate	G30R07-072201	1
47	regulator	G36X03-034000	1
48	pressure adjustable valve fixed support	G36X03-034500	1
49	cavity back gas manifold	G36X03-030800	1
50	5/8" corrugated pipe 300mm	G20C01-215302	1
51	5/8" corrugated pipe 600mm	G20C01-215307	1
52	30" baffle plate	G30X03-072001	1
53	anti-tip support X01 series	G36X01-212501	1
54	3/4" corrugated pipe 180mm	G36X03-215300	1
55	chimney component	G36R03-074100	2
56	anti-wall rubber mat	G36X03-212600	2
57	grill burner no-Z-Zle mount	G36X03-021100	1
58	grill burner no-Z-Zle NG 1.38	G36X03-021205	1
59	chimney outer plate	G36R03-074200	2
60	LED light transformer	G36R04-180305	1
61	relay	G36X03-190200	1
62	power cord	G20A13-160100	1
63	safety valve big support	G36X03-076600	1
64	ignition support	G36X03-212300	1
65	power cord terminal cover	G36X03-031300	1
66	power cord terminal	G36X03-200200	1
67	U type burner back support	G36X03-080700	1
68	oven U type burner	G36X03-080100	1
69	U type burner baffle plate	G36X03-200800	2
70	30" drawer insulation plate	G30X03-072100	1
71	U type burner downside support	G36X03-080600	1
72	5/8" corrugated pipe 900mm	G20C01-215304	1
73	30" bottom plate	G30R05-071800	1
74	safety valve small support	G36X03-076500	1
75	safety valve gas inlet	G36X03-210500	4
76	safety valve	G36X03-035000-1	2
77	5/8" corrugated pipe 160mm	G20C01-215306	1
78	oven burner no-Z-Zle NG 2.20	G18X03-021206	1
79	oven burner no-Z-Zle mount	G36X03-021101	1

80	oven burner no-Z-Zle mount support	G36X03-090700	1
81	2.5" oven legs	G36R05-071500	4
82	small baffle plate	E20F01-072000	1
83	right slid rail X01 series	G36X01-120701	2
84	slide rail L X01 series	G36X01-120700	2
85	drawer panel fixed screw	G36X03-130100	2
86	screw for anti-tip step	G36X03-111000	1
87	grill burner	G36X03-090100	1
88	grill burner reflect board	G36X03-090300	1
89	30" front panel strip	G30X03-214500	1
90	30" cavity top plate	G30X03-070600-Z	1
91	grill burner cover	G36X03-071600	1
92	thermo-sensor fixed part	G36X03-031100	2
93	30" cavity bottom plate glass wool	G30X01-036000	1
94	30" cavity structure frame glass wool	G30X03-070800	1
95	30" cavity insulation plate	G30R03-074500-Z	1
96	top burner support	G36R03-170600	4
97	/	/	/
98	30" cooktop back support	G30X03-022000	1
99	ignition	G36R03-170100	5
100	knob for double gas outlets	G36R04-030101	1
101	knob for thermostat 1to 2	G36R04-030103	1
102	knob for single gas outlet	G36R04-030100	4
103	knob ring R04	G36R04-030200	6
104	knob shining PCB	G36R04-031000	6
105	switch with lock-red	G48X03-170200	2
106	red indicator	G36X03-031000-7	1
107	30" control panel	G30R04-030301	1
108	30" control panel inner plate	G30R04-032300-Z	1
109	red LED light	G36X04-031000-7	6
110	30" cooktop front support	G30R03-022100	1
111	digital thermostat	G36X03-030900-1	1
112	30" control panel gas manifold	G30R04-030700	1
113	36" top valve 0.62	C36R05-030401	2
114	top valve 0.68-R05	C36R05-030403	2
115	main gas valve 0.68 & 0.27	C36R04-030400	1
116	L/F Al. pipe	G48R05-020700	2
117	R/R Al. pipe	G36R03-020400	2
118	30" M/F main Al. pipe	G30R05-020300	1
119	30" M/R support Al. pipe	G30R05-020200	1

120	top valve support	G36X03-030500	5
121	magic eye switch	G36R04-170200	1
122	30" cooktop plate-1	G30R05-020100	1
123	30" cooktop back connection plate	G30R04-073600	1
124	backsplash bolt	G36X03-110800	2
125	30" backsplash component	G30R04-011500-Z	1
126	top burner spark plug rear 660	G36R03-170501	2
127	top burner spark plug front 380	G36R03-170500	2
128	9,000btu burner	G36R03-040000	2
129	top burner spark plug 700	G36R04-170501	1
130	20,000btu burner	G36R03-040300	1
131	15,000btu burner	G36R03-040100	2
132	30" cast iron grates	G30R04-021500	2
133	pan support	G48R03-021400	1
134	handle rubber mat	G36R03-100700	2
135	door round rubber mat	109000	2
*	nozzle 0.46	G20A01-021235	1
*	nozzle 0.9	G20A01-021203	2
*	nozzle 0.93	G20A01-021222	2
*	nozzle 0.94	G20A01-021236	1
*	nozzle 1.18	G20A01-021237	2
*	oven burner nozzle LP 1.39	G18X03-021207	1
*	30" carton	G30R03-230100	1
*	30" door component	G30R03-100000-Z	1