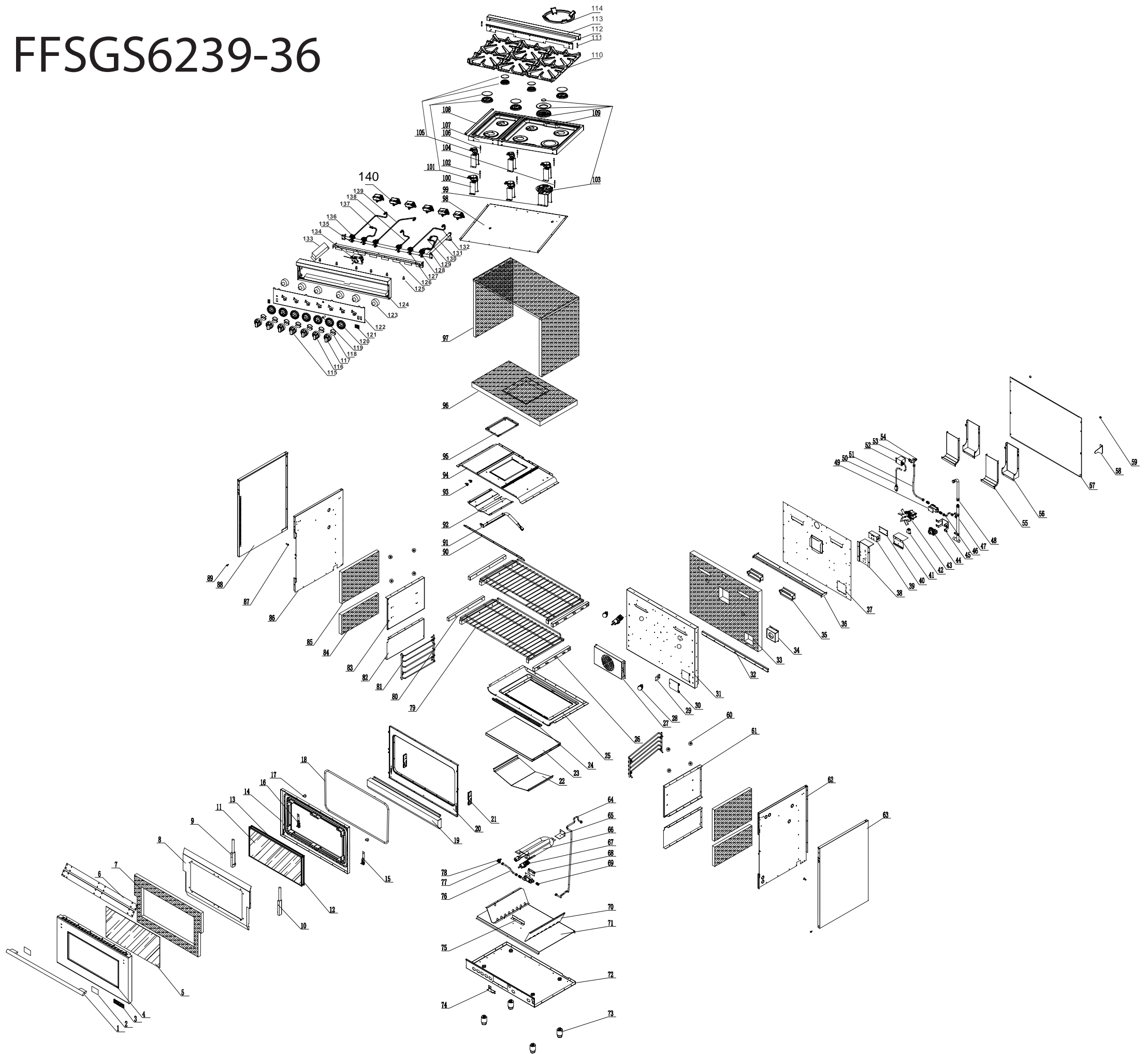


FFSGS6239-36



FFSGS6239-36			
No.	Material Name	Material Code	Quantity
1	36" handle	G36R04-101900	1
2	36" handle rubber mat	G36R03-100700	2
3	36" metal logo	G36R03-020010	1
4	36" door stainless steel cover	G36R03-100401	1
5	36" door outer glass	G36R03-101100	1
6	36" door outer glass black pressing plate	G36R03-101400-02	2
7	36" door glass wool	G36X03-103500	1
8	36" door insulation plate	G36X03-101401	1
9	36" door hinge L	G36R03-110000	1
10	36" door hinge R	G36R03-110010	1
11	36" innder door glass	G36R03-100500	2
12	36" door inner glass R/L strip	G36X03-101601	2
13	36" door inner glass top/down stip	G36X03-101501	2
14	36" door blue enameled component	G36R03-100602-Z	1
15	36" door strengthen part R	G36X03-101001	1
16	36" door strengthen part L	G36X03-101000	1
17	door round rubber mat	109000	2
18	36" door seal bar	G36R03-071200	1
19	36" drawer panel	G36X01-120102-Z	1
20	36" front panel	G36R03-070100-Z	1
21	door hinge mount	G36X03-110000-1	2
22	36" oven burner reflect board	G36X03-080900	1
23	36" down blue enameled tray	G36R07-210102	1
24	36" cavity down strengthen part	G36X03-070000	1
25	36" cavity down blue enameled plate	G36X03-070705-Z	1
26	36" right slid rail X01 series	G36X01-120701	2
27	36" fan motor cover	G36X03-091701	1
28	36" lamp	G36X03-180100	2
29	36" grill burner spark plug support	G36X03-090600	1
30	small baffle plate	E20F01-072000	1
31	36" cavity blue enameled back plate	G36X03-070303	1
32	36" cavity strengthen part	G36X03-070200	1
33	36" cavity back plate glass wool	G36X03-072900	1
34	regulator cover	G48X03-034401	1
35	36" smoke outlet component	G36X03-075000-Z	2
36	36" cooktop back support	G36X03-022000	1
37	36" cavity back insulation plate	G36R07-072201	1
38	36" ignition support	G36X03-212300	1

39	36" power cord terminal	G36X03-200200	1
40	36" power cord terminal cover	G36X03-031300	1
41	36" safety valve big support	G36X03-076600	1
42	36" relay	G36X03-190200	1
43	fan motor	G20A01-091501	1
44	36" regulator	G36X03-034000	1
45	36" pressure adjustable valve fixed support	G36X03-034500	1
46	36" 5/8" corrugated pipe 300mm	G20C01-215302	1
47	36" cavity back gas manifold	G36X03-030800	1
48	36" 3/4" corrugated pipe 180mm	G36X03-215300	1
49	36" safety valve	G36X03-035000-1	2
50	power cord	G20A13-160100	1
51	36" 5/8" corrugated pipe 600mm	G20C01-215307	1
52	LED light transformer	G36R04-180305	1
53	grill burner no-Z-Zle NG 1.38	G36X03-021205	1
54	36" grill burner no-Z-Zle mount	G36X03-021100	1
55	36" chimney component	G36R03-074100	2
56	36" chimney outer plate	G36R03-074200	2
57	36" baffle plate	G36X03-072001	1
58	36" anti-tip support X01 series	G36X01-212501	1
59	anti-wall rubber mat	G36X03-212600	2
60	36" side rack protect cover	G36X03-073900	4
61	cavity top right side blue enameled plate	G36X04-070508	1
62	36" right outside plate inside component	G36X03-071104-Z	1
63	36" right outside plate X01 series	G36X01-071001	1
64	36" 5/8" corrugated pipe 900mm	G20C01-215304	1
65	36" U type burner back support	G36X03-080700	1
66	36" oven U type burner	G36X03-080100	1
67	36" oven cavity spark plug	G36X03-170300-1	2
68	36" safety valve small support	G36X03-076500	1
69	36" safety valve gas inlet	G36X03-210500	4
70	36" U type burner baffle plate	G36X03-200800	2
71	36" drawer insulation plate	G36X03-072100	1
72	36" bottom plate	G36R05-071800	1
73	36" 2.5" oven legs	G36R05-071500	4
74	36" oven burner no-Z-Zle mount support	G36X03-090700	1
75	36" U type burner downside support	G36X03-080600	1
76	36" 5/8" corrugated pipe 195mm	G20C01-215309	1
77	36" oven burner no-Z-Zle mount	G36X03-021101	1
78	36" oven burner no-Z-Zle NG 2.20	G18X03-021206	1

79	36" baking rack	G36R05-071900	2
80	36" slide rail L X01 series	G36X01-120700	2
81	36" side rack X01 series	G36X01-073800	2
82	36" cavity downside plate	G36X03-070400	2
83	cavity top left side blue enameled plate	G36X04-070509	1
84	36" cavity down left glass wool	G36X03-073000	2
85	36" cavity top left glass wool	G36X03-073300	2
86	36" left outside plate inside component	G36X03-071105-Z	1
87	screw for anti-tip step	G36X03-111000	1
88	36" left outside plate X01 series	G36X01-071000	1
89	drawer panel fixed screw	G36X03-130100	2
90	36" front panel strip	G36X03-214500	1
91	36" grill burner	G36X03-090100	1
92	36" grill burner reflect board	G36X03-090300	1
93	36" thermo-sensor fixed part	G36X03-031100	2
94	36" cavity top plate	G36X03-070600-Z	1
95	36" grill burner cover	G36X03-071600	1
96	36" cavity bottom plate glass wool	G36X03-036000	1
97	36" cavity structure frame glass wool	G36X03-070800	1
98	36" cavity insulation plate	G36R03-074500-Z	1
99	/	/	/
100	36" top burner support	G36R03-170600	5
101	15,000btu burner	G36R03-040100	3
102	top burner spark plug rear 660	G36R03-170501	3
103	20,000btu burner	G36R03-040300	1
104	top burner spark plug 700	G36R04-170501	1
105	9,000btu burner	G36R03-040000	2
106	top burner spark plug front 380	G36R03-170500	2
107	36" cooktop plate 12"-1	G12R03-020100	1
108	36" cooktop plate decoration strip	G36X03-025000	1
109	36" cooktop plate -1	G24R03-020100	1
110	/	/	/
111	/	/	/
112	/	/	/
113	/	/	/
114	/	/	/
115	/	/	/
116	/	/	/
117	36" cast iron grates	G36R04-021400	3
118	backsplash bolt	G36X03-110800	2

119	36" cooktop back connection plate	G36R04-073600	1
120	36" backsplash component	G36R04-011500-Z	1
121	36" pan support	G48R03-021400	1
122	36" knob for thermostat 1to 2	G36R04-030103	1
123	36" knob for single gas outlet	G36R04-030100	5
124	36" knob for double gas outlets	G36R04-030101	1
125	36" knob shining PCB	G36R04-031000	7
126	36" red indicator	G36X03-031000-7	1
127	36" knob ring R04	G36R04-030200	7
128	switch with lock-red	G48X03-170200	2
129	36" control panel	G36R04-030301	1
130	/	/	/
131	36" control panel inner plate	G36R04-032300-Z	1
132	36" red LED light	G36X04-031000-7	8
133	36" cooktop front support	G36R03-022100	1
134	top valve 0.68-R05	C36R05-030403	3
135	main gas valve 0.68 & 0.27	C36R04-030400	1
136	36" control panel gas manifold	G36X03-030700	1
137	36" R/F main Al. pipe	G36R03-020500	1
138	36" R/F support Al. pipe	G36R03-020600	1
139	36" R/R Al. pipe	G36R03-020400	2
140	36" magic eye switch	G36R04-170200	1
141	36" digital thermostat KKXT-18-48	G36X03-030900-1	1
142	36" top valve support	G36X03-030500	6
143	36" top valve 0.62	C36R05-030401	2
144	48" L/F Al. pipe	G48R05-020700	1
145	48" M/F Al. pipe	G48R05-020300	1
146	36" M/R Al. pipe	G36R03-020200	1
147	36" ignition	G36R03-170100	6
*	nozzle 0.46	G20A01-021235	1
*	nozzle 0.9	G20A01-021203	2
*	nozzle 0.93	G20A01-021222	2
*	nozzle 0.94	G20A01-021236	1
*	nozzle 1.18	G20A01-021237	3
*	36" oven burner nozzle LP 1.39	G18X03-021207	1
*	36" carton	G36R05-230100	1
*	36" door component	G36R03-100000-Z	1