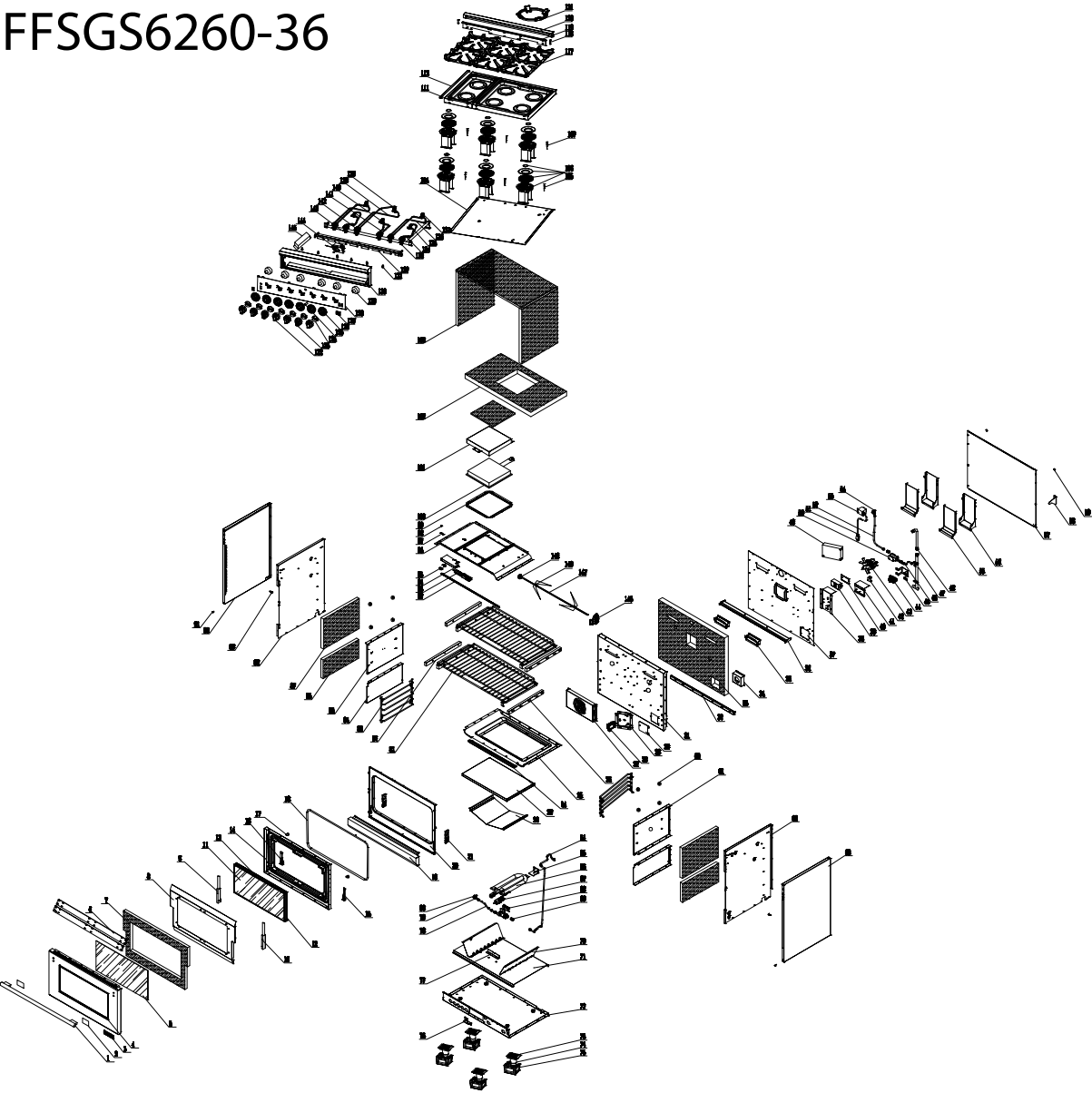


FFSGS6260-36



FFSGS6260-36

No.	Material Name	Material Code	Quantity
1	36" handle	G36R04-101900	1
2	handle rubber mat	G36R03-100700	2
3	metal logo	G36R03-020010	1
4	36" door stainless steel cover-R03-2	G36R03-100401	1
5	36" door outer glass	G36R03-101100	1
6	36" door outer glass black pressing plate	G36R03-101400-02	2
7	36" door glass wool	G36X03-103500	1
8	36" door insulation plate	G36X03-101401	1
9	36" door hinge L	G36R03-110000	1
10	36" door hinge R	G36R03-110010	1
11	36" inner door glass	G36R03-100500	2
12	door inner glass R/L strip	G36X03-101601	2
13	36" door inner glass top/down strip	G36X03-101500	2
14	36" door blue enameled component	G36R03-100602-Z	1
15	door strengthen part R	G36X03-101000	1
16	door strengthen part L	G36X03-101001	1
17	door round rubber mat	02.04.07.109000	2
18	36" door seal bar	G36R03-071200	1
19	36" drawer panel-X01	G36X01-120102-Z	1
20	36" front panel	G36R03-070100-Z	1
21	door hinge mount	G36X03-110000-1	2
22	36" oven burner reflect board-X03-1	G36X03-080900	1
23	36" down blue enameled tray	G36R07-210102	1
24	36" cavity down strengthen part	G36X03-070000	1
25	36" cavity down blue enameled plate	G36X03-070705-Z	1
26	right slid rail X01 series	G36X01-120701	3
27	fan motor cover-X04	G48X04-091701	1
28	Oven lamp-square shape	G36X04-180100	2
29	fan motor baffle plate-X03	G36X03-073100	1
30	small baffle plate	E20F01-072000	1
31	36" cavity blue enameled plate-R04	G36R04-070300	1
32	36" cavity strengthen part	G36X03-070200	1
33	36" cavity back plate glass wool-X04	G36X04-072900	1
34	regulator cover	G48X03-034401	1
35	smoke outlet component	G36X03-075000-Z	2
36	36" cooktop back support	G36X03-022000	1
37	36" cavity back insulation plate-R07-2	G36R07-072201	1
38	ignition support	G36X03-212300	1

39	36" power cord terminal	G36X03-200200	1
40	36" power cord terminal cover	G36X03-031300	1
41	safety valve big support	G36X03-076600	1
42	relay	G36X03-190200	1
43	fan motor-2	G36X03-091500	1
44	regulator	G36X03-034000	1
45	pressure adjustable valve fixed support	G36X03-034500	1
46	5/8" corrugated pipe 300mm	G20C01-215302	1
47	cavity back gas manifold	G36X03-030800	1
48	3/4" corrugated pipe 180mm	G36X03-215300	1
49	ignition	G36R03-170100	6
50	safety valve	G36X03-035000-1	2
51	power cord #13	G20A13-160100	1
52	5/8" corrugated pipe 450mm	G20C01-215308	1
53	LED light transformer	G36R04-180305	1
54	48" nozzle 1.80	G48X04-021207	1
55	chimney component	G36R03-074100	2
56		G36R03-074200	2
57	36" baffle plate	G36X03-072001	1
58	anti-tip support X01 series	G36X01-212501	1
59	anti-wall rubber mat	G36X03-212600	2
60	side rack protect cover	G36X03-073900	8
61	36" cavity top right side blue enameled plate	G36R04-070500-Z	1
62	right outside plate inside component	G36R03-071100-Z	1
63	right outside plate X01 series	G36X01-071001	1
64	5/8" corrugated pipe 900mm	G20C01-215304	1
65	U type burner back support	G36X03-080700	1
66	oven U type burner	G36X03-080100	1
67	oven cavity spark plug	G36X03-170300-1	1
68	safety valve small support	G36X03-076500	1
69	safety valve gas inlet	G36X03-210500	4
70	U type burner baffle plate	G36X03-200800	2
71	36" drawer insulation plate-X03	G36X03-072100	1
72	36" bottom plate-R03-1	G36R04-071800	1
73	oven leg cover	G36X01-104000	4
74	oven leg	G36X03-071500	4
75	oven leg coat	G36X01-071600	4
76	oven burner nozzle mount support	G36X03-090700	2
77	U type burner downside support	G36X03-080600	1
78	36" 5/8" corrugated pipe 200mm	G20C01-215309	1
79	oven burner nozzle mount	G36X03-021101	2

80	oven burner nozzle NG 2.20	G18X03-021206	1
81	36" baking rack-stainless steel	G36R05-071901	3
82	slide rail L X01 series	G36X01-120700	3
83	36" side rack-stainless steel	G36X01-073801	2
84	cavity downside plate	G36X03-070400	2
85	36" cavity top left side blue enameled plate	G36R04-070501	1
86	36" cavity down left glass wool	G36X03-073000	2
87	36" cavity top left glass wool	G36X03-073300	2
88	left outside plate inside component	G36R03-071101-Z	1
89	screw for anti-tip step	G36X03-111000	1
90	left outside plate X01 series	G36X01-071000	1
91	drawer panel fixed screw	G36X03-130100	2
92	36" front panel strip	G36X03-214500	1
93	36" grill infrared ignition plug	G36X04-170300-1	1
94	36" grill infrared ignition plug fixed support	G36X04-090600	1
95	thermo-sensor fixed part	G36X03-031100	2
96	36" cavity top plate component-X04	G36X04-070600-Z	1
97	orifice plate for infrared burner wire	G36X04-071700	1
98	Al. cover for infrared ignition plug wire	G36X04-073900	1
99	36" infrared burner binder plate	G36X04-075000	1
100	36" grill infrared burner	G36X04-090100	1
101	36" grill infrared insulation cover	G36X04-071600	1
102	36" cavity top glass wool	G36X04-036000	1
103	36" cavity structure frame glass wool	G36X03-070800	1
104	36" cavity insulation plate-R03	G36R03-074500-Z	1
105	top burner spark plug 700	G36R04-170501	3
106	20,000btu burner-brass	G36R03-040300	6
107	top burner spark plug 400	G36R04-170505	3
108	/	/	/
109	/	/	/
110	/	/	/
111	12" cooktop plate-2	G12R04-020100	1
112	36" cooktop plate decoration strip	G36X03-025000	1
113	24" cooktop plate-2	G24R04-020100	1
114	/	/	/
115	/	/	/
116	/	/	/
117	36" cast iron grates-R04	G36R04-021400	3
118	backsplash bolt	G36X03-110800	2
119	36" cooktop back connection plate	G36R04-073600	1
120	36" backsplash component-R04	G36R04-011500-Z	1

121	pan support	G48R03-021400	1
122	knob for thermostat 1to 2	G36R04-030103	1
123	knob for double gas outlets	G36R04-030101	6
124	knob shining PCB	G36R04-031000	7
125	red indicator	G36X03-031000-7	1
126	knob ring R04	G36R04-030200	7
127	48" switch with lock-black	G48X04-170200	3
128	36" control panel-R04-1	G36R04-030300	1
129	/		/
130	36" control panel inner plate-R04	G36R04-032300-Z	1
131	red LED light	G36X04-031000-7	7
132	36" cooktop front support-R03	G36R03-022100	1
133	top valve support	G36X03-030500	6
134	36" R/F support Al. pipe	G36R03-020600	2
135	36" R/F main Al. pipe	G36R03-020500	2
136	R/R support Al. pipe	G48R04-020500	2
137	R/R main Al. pipe	G48R04-020600	2
138	M/R main Al. pipe	G48R04-020400	1
139	M/R support Al. pipe	G48R04-020300	1
140	M/F main Al. pipe	G36R04-020400	1
141	M/F support Al. pipe	G36R04-020300	1
142	main gas valve 0.68 & 0.27	C36R04-030400	6
143	36" control panel gas manifold-X03	G36X03-030700	1
144	digital thermostat KKXT-18-48	G36X03-030900-1	1
145	magic eye switch	G36R04-170200	1
146	Rotisserie motor	G20A01-200101	1
147	rotisserie rod 770mm	G36R03-200500	1
148	roasted axis support	G20A01-200700	1
149	rotisserie fork	G20A01-200601	2