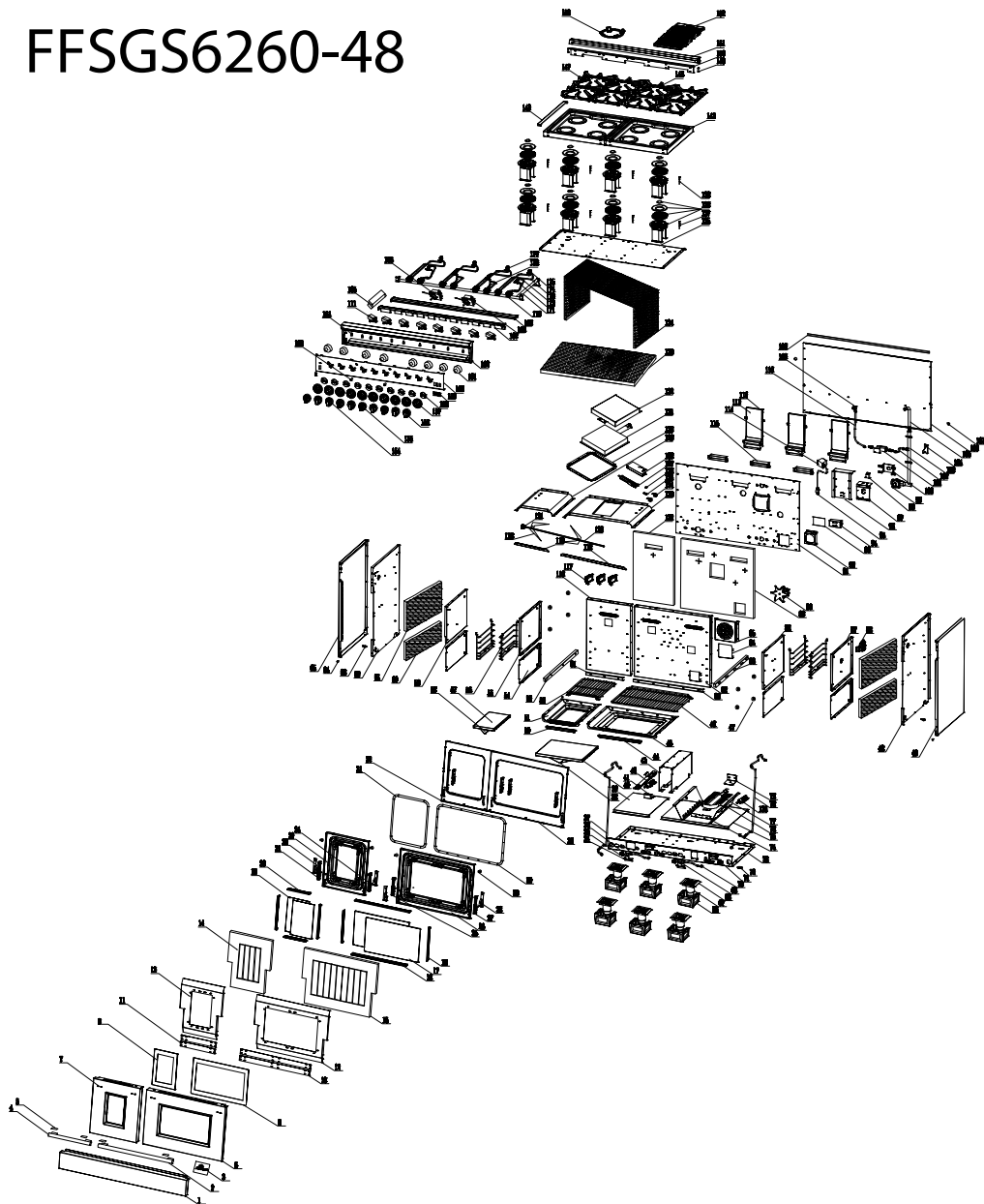


# FFSGS6260-48



## FFSGS6260-48

No.	Material Name	Material Code	Quantity
1	48" drawer panel-X01	G48X01-120102-Z	1
2	30" handle	G30R04-101900	1
3	metal logo	G36R03-020010	1
4	handle	G18R04-101900	1
5	handle rubber mat	G36R03-100700	4
6	30" door stainless steel cover-R03-2	G48R03-100401	1
7	18" door stainless steel cover-R03-2	G18R03-100401	1
8	30" door outer glass	G30R03-101100	1
9	18" door outer glass	G18R03-101100	1
10	30" door outer glass black pressing plate	G30R03-101400-02	2
11	18" door outer glass black pressing plate	G18R03-101400-02	2
12	30" door insulation plate	G30X03-101401	1
13	18" door insulation plate	G18X03-101401	1
14	18" door glass wool	G18X03-103500	1
15	30" door glass wool	G30X03-103500	1
16	30" door inner glass top/down stip	G30X03-101501	2
17	30" inner door glass	G30R03-100500	2
18	door inner glass R/L strip	G36X03-101601	4
19	18" inner door glass	G18R03-100500	2
20	18" door inner glass top/down stip	G18X03-101501	2
21	18" door hinge R	G18R03-110010	1
22	door strengthen part R	G36X03-101000	2
23	18" door blue enameled component	G18R03-100602-Z	1
24	18" door hinge L	G18R03-110000	1
25	30" door hinge R	G30R03-110010	1
26	30" door blue enameled component	G30R03-100602-Z	1
27	30" door hinge L	G30R03-110000	1
28	door strengthen part L	G36X03-101001	2
29	door round rubber mat	109000	4
30	30" door seal bar	G48R03-071200	1
31	18" door seal bar	G18R03-071200	1
32	18" front panel	G18R03-070100-Z	1
33	front panel	G48R03-070100-Z	1
34	oven burner nozzle mount support	G36X03-090700	2
35	oven burner nozzle mount	G36X03-021101	3
36	48" grill burner nozzle NG 1.7	G48X04-021203	1
37	5/8" corrugated pipe 1500mm	G20C01-215305	1
38	30" oven burner reflect board	G30X03-080900	1

39	18" drawer insulation plate-X03	G18X03-072100	1
40	30" down blue enameled tray	G30R07-210102	1
41	grill burner back fixed support	G18X03-080700	1
42	48" grill burner	G18X03-080100	1
43	48" oven U type burner downside plate	G48X03-070400	1
44	30" cavity down strengthen part	G30X03-070000	1
45	30" cavity down blue enameled plate	G30X03-070704-Z	1
46	30" baking rack-stainless steel	G30R05-071901	3
47	side rack protect cover	G36X03-073900	16
48	right outside plate inside component	G36R03-071100-Z	1
49	right outside plate X01 series	G36X01-071001	1
50	cavity down strengthen part	G18X03-070000	1
51	18" cavity down blue enameled plate	G18X03-070704-Z	1
52	18" baking rack-stainless steel	G18R05-071901	3
53	slide rail L X01 series	G36X01-120700	6
54	cavity downside plate	G36X03-070400	2
55	48" cavity top right side blue enameled plate	G36X04-070508	1
56	36" side rack-stainless steel	G36X01-073801	4
57	18" down blue enameled tray	G18R07-210102	1
58	18" oven burner reflect board	G18X03-080900	1
59	48" cavity top left side blue enameled plate	G36X04-070509	1
60	36" cavity down left glass wool	G36X03-073000	5
61	36" cavity top left glass wool	G36X03-073300	5
62	left outside plate inside component	G36R03-071101-Z	1
63	screw for anti-tip step	G36X03-111000	1
64	drawer panel fixed screw	G36X03-130100	2
65	left outside plate X01 series	G36X01-071000	1
66	oven leg cover	G36X01-104000	6
67	oven leg	G36X03-071500	6
68	oven leg coat	G36X01-071600	6
69	oven burner nozzle NG 2.20	G18X03-021206	1
70	5/8" corrugated pipe 160mm	G20C01-215306	2
71	safety valve small support	G36X03-076500	2
72	safety valve gas inlet	G36X03-210500	6
73	48" bottom plate-R03-1	G48R03-071800-Z	1
74	U type burner downside support	G36X03-080600	1
75	30" drawer insulation plate	G30X03-072100	1
76	U type burner baffle plate	G36X03-200800	2
77	oven U type burner	G36X03-080100	1
78	5/8" corrugated pipe 900mm	G20C01-215304	1
79	U type burner back support	G36X03-080700	1
80	30" cavity strengthen part	G30X03-070200	1

81	18" cavity strengthen part	G18X03-070200	1
82	30" cavity blue enameled back plate-R04-2	G48R04-070300	1
83	right slid rail X01 series	G36X01-120701	6
84	small baffle plate	E20F01-072000	1
85	fan motor cover-X04	G48X04-091701	1
86	36" cavity top left side blue enameled plate	G36R04-070501	1
87	36" cavity top right side blue enameled plate	G36R04-070500-Z	1
88	Rotisserie motor	G20A01-200101	1
89	30" cavity back plate glass wool-X04	G30X04-072900	1
90	fan motor-2	G36X03-091500	1
91	48" cavity back insulation plate-R07-2	G48R07-072201	1
92	regulator cover	G48X03-034401	1
93	36" power cord terminal cover	G36X03-031300	1
94	36" power cord terminal	G36X03-200200	1
95	power cord #13	G20A13-160100	1
96	ignition support	G36X03-212300	1
97	safety valve big support	G36X03-076600	1
98	relay	G36X03-190200	1
99	48" pressure adjustable valve fixed support	G48X03-034000	1
100	48" pressure adjustable valve fixed support	G48X03-034500	1
101	safety valve	G36X03-035000-1	3
102	5/8" corrugated pipe 300mm	G20C01-215302	1
103	48" cavity back gas manifold	G48X03-030801	1
104	anti-tip support X01 series	G36X01-212501	1
105	3/4" corrugated pipe 180mm	G36X03-215300	1
106	48" baffle plate	G48X03-072001	1
107	anti-wall rubber mat	G36X03-212600	2
108	48" baffle plate strengthen part	G48X03-072300	1
109	48" nozzle 1.80	G48X04-021207	1
110	5/8" corrugated pipe 450mm	G20C01-215308	1
111	ignition	G36R03-170100	8
112	chimney component	G36R03-074200	3
114	LED light transformer	G36R04-180305	1
115	smoke outlet component	G36X03-075000-Z	3
116	18" cavity blue enameled plate-R04	G18R04-070300	1
117	Oven lamp-square shape	G36X04-180100	3
118	30" front panel strip	G30X03-214500	1
119	18" front panel strip	G18X03-214500	1
120	rotisserie rod 618mm	G36R03-200501	1
121	roasted axis support	G20A01-200700	1
122	18" cavity back plate glass wool	G18X03-072900	1
123	30" cavity top plate component-X04	G30X04-070600-Z	1

124	thermo-sensor fixed part	G36X03-031100	4
125	orifice plate for infrared burner wire	G36X04-071700	1
126	Al. cover for infrared ignition plug wire	G36X04-073900	1
127	36" grill infrared ignition plug	G36X04-170300-1	1
128	36" grill infrared ignition plug fixed support	G36X04-090600	1
129	18" cavity top plate component-X03	G18X03-070600-Z	1
130	36" infrered burner binder plate	G36X04-075000	1
131	36" grill infrared burner	G36X04-090100	1
132	36" grill infrared insulation cover	G36X04-071600	1
133	48" cavity top glass wool-X04	G48X04-036000	1
134	cavity structure frame glass wool	G48X03-070800	1
135	48" cavity insulation plate-R03	G48R03-074500-Z	1
136	oven cavity spark plug	G36X03-170300-1	2
137	top burner spark plug 700	G36R04-170501	4
138	20,000btu burner-brass	G36R03-040300	8
139	top burner spark plug 400	G36R04-170505	4
142	24" cooktop plate-2	G24R04-020100	2
143	48" cooktop plate decoration strip	G48R04-025000	1
147	48" cast iron grates-R04	G48R04-021400	1
148	36" cast iron grates-R04	G36R04-021400	3
149	backsplash bolt	G36X03-110800	2
150	48" cooktop back connection plate	G48R04-073600	1
151	48" backsplash component-R04	G48R04-011500-Z	1
152	griddle	G36R03-021400	1
153	pan support	G48R03-021400	1
154	knob for thermostat 1to 1	G36R04-030102	1
155	knob for thermostat 1to 2	G36R04-030103	1
156	knob for double gas outlets	G36R04-030101	8
157	knob ring R04	G36R04-030200	10
158	knob shining PCB	G36R04-031000	10
159	48" switch with lock-black	G48X04-170200	4
160	48" control panel-R04-1	G48R04-030300	1
161	control panel silicon ring	G36X03-120900	8
162	48" control panel inner plate-R04	G48R04-032300-Z	1
163	red indicator	G36X03-031000-7	2
164	red LED light	G36X04-031000-7	10
165	LED lights manual switch	G36R05-170200	1
166	48" digital thermostat KKXT-17-48	G48X03-030900-1	1
167	48" cooktop front support-R03	G48R03-022100	1
168	digital thermostat KKXT-18-48	G36X03-030900-1	1
169	48" cooktop back support	G48R04-022000	1
170	main gas valve 0.68 & 0.27	C36R04-030400	8

171	48" control panel gas manifold-R04	G48R04-030700	1
172	36" R/F support Al. pipe	G36R03-020600	2
173	36" R/F main Al. pipe	G36R03-020500	2
174	R/R support Al. pipe	G48R04-020500	4
175	R/R main Al. pipe	G48R04-020600	4
176	M/F support Al. pipe	G36R04-020300	2
177	M/F main Al. pipe	G36R04-020400	2
178	rotisserie fork	G20A01-200601	1
LP KIT	nozzle 0.46	G20A01-021235	1
	nozzle 0.9	G20A01-021203	2
	nozzle 0.93	G20A01-021222	3
	nozzle 0.94	G20A01-021236	1
	nozzle 1.18	G20A01-021237	4
	nozzle 1.39	G18X03-021207	1
	nozzle 1.12	G48X04-021209	1