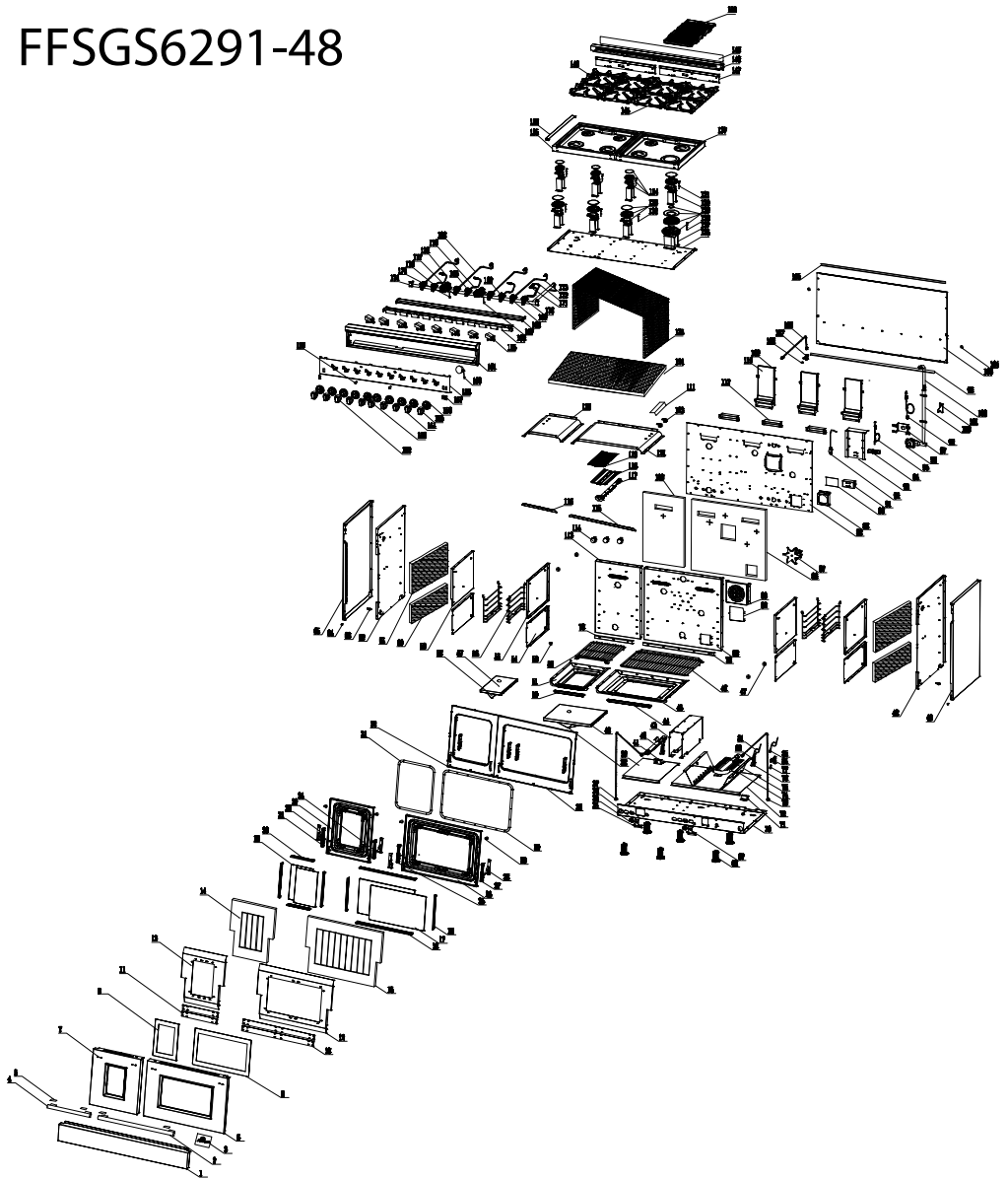


FFSGS6291-48



G48R07 FFSGS6291-48

FFSGS6291-48

No.	Material Name	Material Code	Quantity
1	48" drawer panel-X03	G48X03-120104	1
2	30" handle	G30R04-101900	1
3	metal logo	G36R03-020010	1
4	handle	G18R04-101900	1
5	handle rubber mat	G36R03-100700	4
6	30" door stainless steel cover-R03-2	G48R03-100401	1
7	18" door stainless steel cover-R03-2	G18R03-100401	1
8	30" door outer glass	G30R03-101100	1
9	18" door outer glass	G18R03-101100	1
10	30" door outer glass black pressing plate	G30R03-101400-02	2
11	18" door outer glass black pressing plate	G18R03-101400-02	2
12	30" door insulation plate	G30X03-101401	1
13	18" door insulation plate	G18X03-101401	1
14	18" door glass wool	G18X03-103500	1
15	30" door glass wool	G30X03-103500	1
16	30" door inner glass top/down stip	G30X03-101501	2
17	30" inner door glass	G30R03-100500	2
18	door inner glass R/L strip	G36X03-101601	4
19	18" inner door glass	G18R03-100500	2
20	18" door inner glass top/down stip	G18X03-101501	2
21	18" door hinge R	G18R03-110010	1
22	door strengthen part R	G36X03-101000	2
23	18" door component	G18R03-100600-Z	1
24	18" door hinge L	G18R03-110000	1
25	30" door hinge R	G30R03-110010	1
26	30" door component	G30R03-100600-Z	1
27	30" door hinge L	G30R03-110000	1
28	door strengthen part L	G36X03-101001	2
29	door round rubber mat	109000	4
30	30" door seal bar	G48R03-071200	1
31	18" door seal bar	G18R03-071200	1
32	18" front panel	G18R03-070100-Z	1
33	front panel	G48R03-070100-Z	1
34	oven burner nozzle mount support	G36X03-090700	2
35	36" oven burner nozzle mount	G36R03-021101	2
36	48" grill burner nozzle NG 1.7	G48X04-021203	1
37	18" oven burner Al. pipe	G18R07-023100	2
38	30" oven burner reflect board	G30X03-080902	1
39	18" drawer insulation plate-X03	G18X03-072100	1
40	30" down tray-R07	G30R07-210100	1

G48R07 FFSGS6291-48

41	grill burner back fixed support	G18X03-080700	1
42	48" grill burner	G18X03-080101	1
43	48" oven U type burner downside plate	G48X03-070400	1
44	30" cavity down strengthen part	G30X03-070000	1
45	30" cavity down plate	G30X03-070703-Z	1
46	30" baking rack	G30X03-071900	2
47	side rack protect cover	G36X03-073900	8
48	36" right outside plate inside component	G36R03-071100	1
49	36" right outside plate	G36X03-071002	1
50	cavity down strengthen part	G18X03-070000	1
51	18" cavity down plate	G18X03-070703-Z	1
52	18" baking rack	G18X03-071900	2
53	side rack hanger	73700	4
54	cavity downside plate	G36X03-070400	2
55	36" cavity top right side plate	G36X04-070504	2
56	36" side rack-X03	G36X03-073800	4
57	18" down tray-R07	G18R07-210100	1
58	18" oven burner reflect board	G18X03-080902	1
59	36" cavity top left side plate	G36X04-070505	2
60	36" cavity down left glass wool	G36X03-073000	5
61	36" cavity top left glass wool	G36X03-073300	5
62	36" left outside plate inside component	G36R03-071101	1
63	screw for anti-tip step	G36X03-111000	1
64	drawer panel fixed screw	G36X03-130100	2
65	36" left outside plate	G36X03-071003	1
66	Adjustable oven legs	G20A10-071501	6
	oven leg stainless steel cover	G20A10-071600	6
67	oven burner nozzle NG 2.26	G18X03-021203	1
68	/		/
69	pilot flame whole set support	G36R07-080710	2
70	48" bottom plate-R03-2	G48R05-071800	1
71	36" U type burner front support	G36R07-080700	1
72	30" drawer insulation plate	G30X03-072100	1
73	30" oven burner Al. pipe	G48R07-023100	1
74	U type burner baffle plate	G36X03-200800	2
75	36" cavity U type burner	G36X03-080101	1
76	48" pilot flame support part	G48R07-080600	2
77	36" pilot flame with brass tube	G36R07-170600	2
78	30" cavity strengthen part	G30X03-070200	1
79	18" cavity strengthen part	G18X03-070200	1
80	30" cavity back plate-R07	G48R07-070300	1
81	36" cavity oven spark plug L-550	G36R07-170501	1

G48R07 FFSGS6291-48

82	small baffle plate	E20F01-072000	1
83	fan motor cover-X03-1	G36X03-091700	1
84	36" pilot flame thermocouple	G36R07-072400	1
85	36" cavity oven spark plug L-850	G36R07-170500	2
86	30" cavity back plate glass wool	G30X03-072900	1
87	fan motor-1	G20A01-091501	1
88	48" cavity back insulation plate-R07-1	G48R07-072200	1
89	regulator cover	G48X03-034401	1
90	36" power cord terminal cover	G36X03-031300	1
91	36" power cord terminal	G36X03-200200	1
92	power cord #7	G20A07-160105	1
93	ignition support	G36X03-212300	1
94	ignition 1 to 4	G20C01-170103-02	1
95	burner spark plug-L1100	G20C01-170501	1
96	48" regulator	G48X03-034000	1
97	48" pressure adjustable valve fixed support	G48X03-034500	1
98	48" pilot flame thermocouple-18	G48R07-072400	1
99	48" baffle plate bottom part fixed plate	G48R07-072400	1
100	48" cavity back main gas pipe	G48X03-030802	1
101	36" anti-tip support-X03	G36X03-212501	1
102	3/4" corrugated pipe 180mm	G36X03-215300	1
103	48" baffle plate	G48X03-072001	1
104	anti-wall rubber mat	G36X03-212600	2
105	48" baffle plate strengthen part	G48X03-072300	1
106	36" cavity top Al. pipe	G36R07-023300	1
107	nozzle mount part	G20A01-021100	1
108	grill burner nozzle NG 1.38	G36X03-021205	1
109	chimney component	G36R03-074200	3
110		G36R03-074100	3
111	36" thermo-sensor protect plate	G36R07-073100	1
112	smoke outlet component	G36X03-075000-Z	3
113	18" cavity back plate-R07	G18R07-070300	1
114	lamp	G36X03-180100	3
115	30" front panel strip	G30X03-214500	1
116	18" front panel strip	G18X03-214500	1
117	36" straight grill burner	G36R03-080100	1
118	36" grill burner infrared net	G36R07-090500	1
119	36" grill burner reflect board-R07	G36R07-090300	1
120	18" cavity back plate glass wool	G18X03-072900	1
121	30" cavity top plate component-R07	G30R07-070600-Z	1
122	18" cavity top plate component-R07	G18R03-070600-Z	1
123	thermo-sensor fixed part	G36X03-031100	4

G48R07 FFSGS6291-48

124	48" cavity top glass wool-X03	G48X03-036000	1
125	cavity structure frame glass wool	G48X03-070800	1
126	48" cavity insulation plate-R03	G48R03-074500-Z	1
127	/		/
128	top burner spark plug 700	G36R04-170501	1
129	20,000btu burner	G36R03-040200	1
130	top burner support	G36R03-170600	7
131	top burner spark plug front 380	G36R03-170500	4
132	top burner spark plug rear 660	G36R03-170501	3
133	15,000btu burner	G36R03-040100	4
134	9000btu burner	G36R03-040000	3
135	cooktop plate -1	G24R03-020100	1
136	48" cooktop plate decoration strip	G48R04-025000	1
137	cooktop plate -2	G48R03-020100	1
138	/		/
139	/		/
140	/		/
141	/		/
142	/		/
143	/		/
144	/		/
145	48" cast iron grates-R05	G48R05-021500	1
146	36" cast iron grates-R05	G36R05-021500	3
147	24" cooktop plate welding part	G36X03-073600	2
148	48" backsplash component-R03	G48R03-011500-Z	1
149	48" backsplash board cover	G48R03-011600	1
150	griddle	G36R03-021400	1
151	/		/
152	36" knob for thermostat- pilot flame	G36R03-030104	2
153	/		/
154	36" knob for single gas outlet	G36R03-030100	7
155	36" knob for double gas outlet	G36R03-030101	1
156	36" knob ring for main gas valve	G36R03-030200	10
157	switch with lock-red	G48X03-170200	3
158	/		/
159	48" control panel-R07	G48R07-030301	1
160	temperature gauge	G36R07-190600	1
161	48" control panel inner plate-R03	G48R03-032301-Z	1
162	/		/
163	/		/
164	/		/
165	ignition	G36R03-170100	8

G48R07 FFSGS6291-48

166	48" cooktop front support-R07	G48R07-022100	1
167	36" pilot flame thermostat 1 to 2	G36R07-030601	1
168	48" cooktop back support	G48R04-022000	1
169	top valve 0.68-R05	C36R05-030403	4
170	main gas valve 0.68 & 0.27	C36R04-030400	1
171	36" R/F main Al. pipe	G36R03-020500	1
172	36" R/F support Al. pipe	G36R03-020600	1
173	36" R/R Al. pipe	G36R03-020400	3
174	48" control panel gas manifold-R07	C48R07-030700	1
175	48" pilot flame thermostat 1 to 1	G48R07-030601	1
176	top valve 0.62	C36R05-030401	3
177	top valve support	G36X03-030500	8
178	36" L/F Al. pipe	G36R03-020700	2
179	36" M/F Al. pipe	G36R03-020300	1
180	36" L/R main Al. pipe Φ 8	G36R07-020400	1