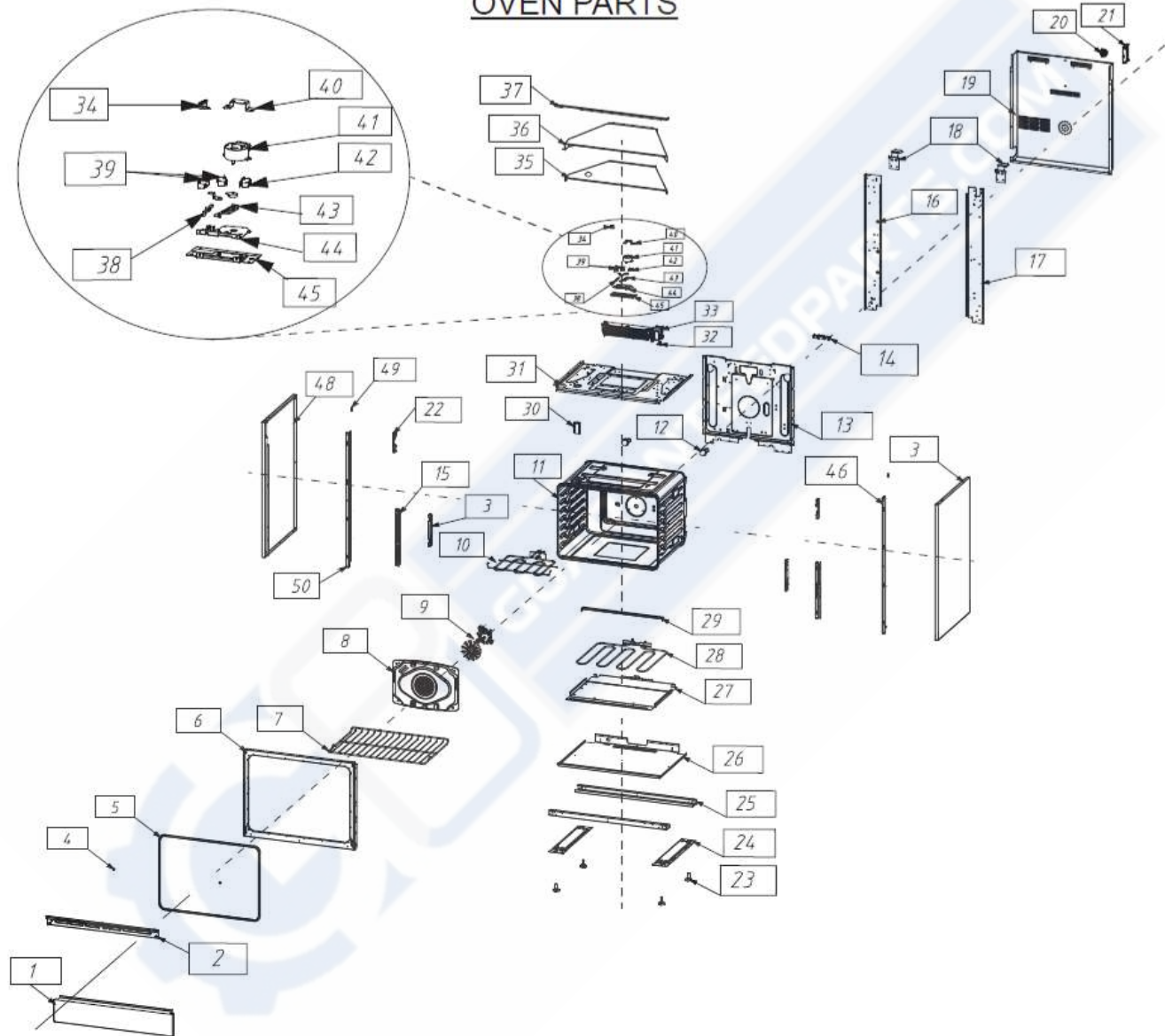
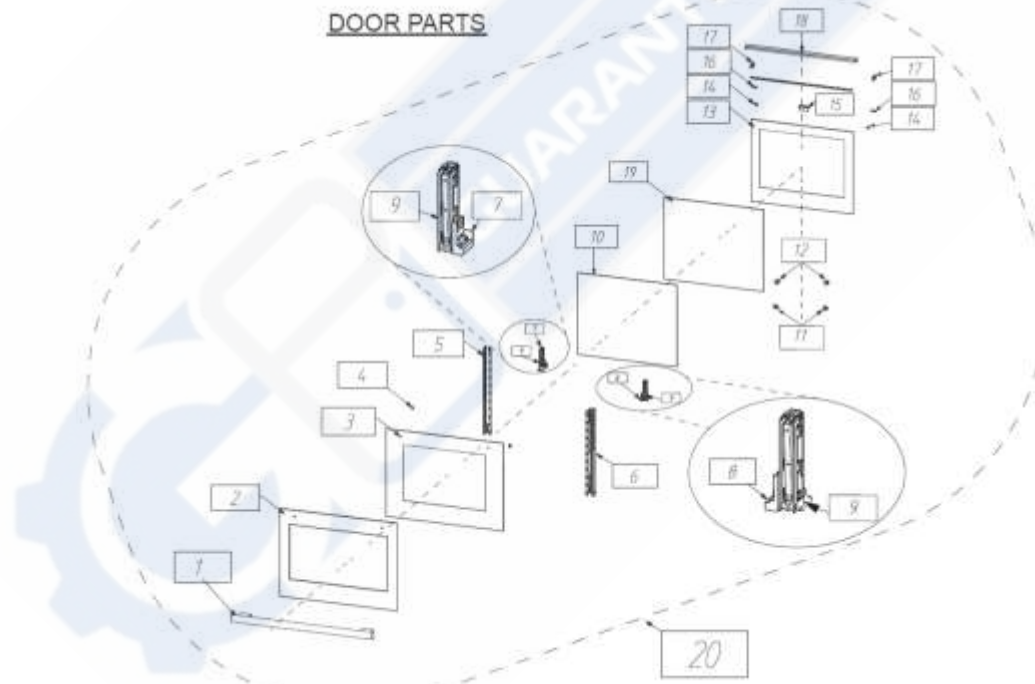


OVEN PARTS



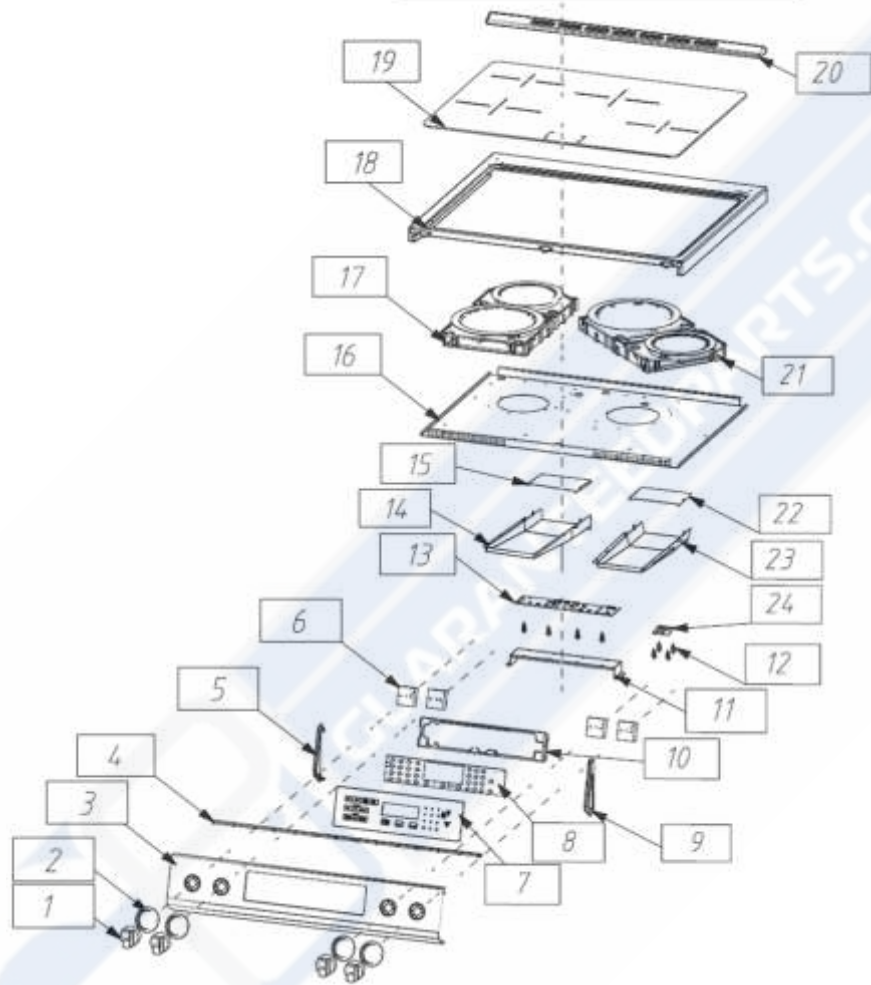
No	Part Name	Part number	QTY	Part Description
1	Lower buckle plate	30306400041	1	Lower grommet,K30B(GJF),None,430,0.5mm
2	Oven baffle	30316200006	1	Oven Stall Plate,K30,Black Matte Spray,Suction Duct Baffle Plate
3	Hinge fixing plate	30302600003	2	Hinge Fixing Plate,K21A,Electroplated,Universal
4	Oven auxiliary plastic parts	30204100032	2	Oven Auxiliary Plastic Parts,K30B,Silicone Rubber,Black,Flap Door Buffer Pad
5	Door seal strip	30200500040	1	Door seal, Standing oven door seal kit, K30, Fiberglass + stainless steel buckle (φ13*0.15), with door seal mounting holes, inner panel
6	Inner liner panel	30315000268	1	Inner panel, K30(SFF), BTC1, 0.6mm, sky-blue enamel, no
7	Shelves	30400100002	2	Shelf
8	Back electric heating tube baffle	30301100128	1	Back heater plate,K21A,sky blue enamel,BTC1,0.6mm,without hole,for air frying
9	Circulating fan components	30100300051	1	Circulation fan assembly,K21A,110-120V,33W,11 pieces,φ127mm,1660r/min,MZ-6120X3-H016,ADMX-04
10	Electric heating tube	30101200233	1	Electric heater,K30,top,240V,3600W,UL approved,SUS840,with screws,removable
11	Stand up oven liner assembly	2040700273	1	Standing Oven Liner Assembly,K30(SFF),Electric Oven,Blue Enamel,BTC1,Single Cycle Motor,Double Round Lamps,0.6mm,One Shot,None,Without Food Probe Holes,Without Door Seal Mounting Holes
12	Round lamp assembly	30101000013	2	Round Lamp Assembly,K1,120V,G9,300°C,short inline
13	Inner gallbladder posterior stent	30301500004	1	Rear Inner Bracket,K30SFF
14	Kitchen appliance junction box	30102600008	1	Stove Junction Box,EG-3,60A,None,None
15	Hinge fixing plate	30302600037	2	Hinge fixing plate,K30(GSF),Hinge fixing bracket,left/right universal
16	Inner gallbladder left and right brackets	30302500005	1	Inner liner left and right bracket,K30SFF,left
17	Inner gallbladder left and right brackets	30302500006	1	Inner liner left/right bracket,K30SFF,right
18	Oven fixing block	30313300001	2	Oven fixing block, K30, panel back fixing block
19	Shell rear cover plate	30302200165	1	Shell back cover, K30B(SFI), galvanized sheet, induction, 0.5mm, terminal strip, without holes
20	Oven fixing block	30313300007	1	Oven fixing block,K21A,Power cord fixing buckle
21	Oven fixing plate	30302900017	1	Oven Fixing Block,K30,None,Galvanized,Power Cord Fixing Block
22	Oven fixing plate	30302900308	2	Oven fixing plate,K30B(GJF),Switch plate fixing block (left/right universal)
23	Anti slip feet	30201600011	4	Non-slip feet, silicone rubber, total height 47.5mm, black, nuts (2 pcs), F7(50SFEH4B)
24	Oven bracket	30313200090	2	Oven bracket, K30(GSF) bottom bracket
25	Oven connecting plate	30302700162	2	Oven connection plate, K30(GSF), left and right side panel connection plate
26	Inner compartment baffle	30307800016	1	Inside compartment panel, K30(GSF), storage compartment divider
27	Bottom electric heating tube fixing plate	30301200002	1	Bottom heat pipe fixing plate, K21A
28	Electric heating tube	30101200139	1	Heater, K30, bottom, 240V, 2200W, UL certified, 304 stainless steel, with screws
29	Oven baffle	30316200003	2	Oven plate,K21A,Bottom electric heaters plate
30	Smoke exhaust pipe	30401100007	1	Smoke Evacuator, K30SFF
31	Bottom plate of smoke exhaust duct	30301800002	1	Smoke Duct Base Plate,K30SFF
32	Overheat protector	30100700032	1	Overheat protector,85°C,auto reset,UL approved,250V,16A,6.3 inserts
33	Cooling fan component	30100400077	1	Thermal Fan Assembly,K21A,110V-120V,60Hz,49W,2300/1250r/min,Dual Exhaust,MZ-6125X3-H010,ADMS-11
34	Overheat protector	30100700051	1	Overheat protector,140°C,auto reset,UL approved,250V,16A,6.3 inserts
35	Smoke exhaust duct cover plate	30312600043	1	Flue cover, K30(SFF), galvanized sheet, 0.4mm, self-cleaning, center cover

36	Smoke exhaust duct cover plate	30312600023	1	Smoke evacuation cover, K30(GSF), galvanized sheet, 0.4mm, self-cleaning, top plate
37	Oven fixing plate	30302900312	1	Oven fixing plate,K30B(SFC),electric ceramic hob,chassis front support
38	Sliding block	30200600001	1	Slider,K21A,Flame Retardant Nylon,Door Switch Slider
39	Microswitches	30101700004	2	Microswitch,250V,5A,200°C,None,Normally Open,Door Lock Microswitch
40	Oven fixing plate	30302900009	1	Oven fixing plate,K21A,None,Galvanized sheet,1mm,Suction air duct baffle fixing plate
41	Door lock motor	30101800008	1	Door Lock Motor,K21(A),110V,<6W Minzor
42	Microswitches	30101700009	1	Microswitch,250V,5A,200°C,None,Normally closed,Door switch
43	Door Lock Hook	30401400001	1	Door Lock Hook,K21A,304 Stainless Steel
44	Oven fixing plate	30302900015	1	Oven fixing plate,K21A,None,Galvanized sheet,1.5mm,Door lock switch bracket
45	Oven fixing plate	30302900009	1	Oven fixing plate,K21A,None,Galvanized sheet,1mm,Suction duct baffle fixing plate
46	Housing left and right brackets	30302400006	1	Housing left and right bracket, K30, right, side panel support bracket
47	Shell left and right side panels	30302300152	1	Side panels for right and left side of housing, K30B(GJF), SPCC, 0.5mm, right, black flash spraying
48	Shell left and right side panels	30302300153	1	Housing left and right side plates,K30B(GJF),SPCC,0.5mm,left,black flash spraying
49	Non-standard screw	30406900036	2	Non-standard screw,Limit screw,ST4.5,12mm,430,cross slot
50	Housing left and right brackets	30302400005	1	Shell left/right bracket,K30,left,side panel support bracket



No	Part Name	Part number	QTY	Part Description
1	Stainless Steel Handle	30400700297	1	Handle, No.97, detachable, transparent lacquer, aluminum alloy + 304 stainless steel, 565mm, metal color
1	Antique Brass Handle	30400700298	1	Handle, No.97, detachable, transparent lacquer, aluminum alloy + 304 stainless steel, 565mm, bronze color
2	Decorative strip for large oven	30307900163	1	Large Oven Decorative Strip,K21A,None,430Stainless Steel,0.6mm,Door Panel Decorative Strip,Full Wrap,565mm,Window Size 632.8*353.7-116
3	Door panel glass	30500201175	1	Door Panel Glass,K21A,565mm,None,Not Coated,4mm,Tempered Glass,Black,Window Size 533.5*357.7-113.3
4	Oven fixing block	30313300065	2	Oven fixing block, No.89, iron bar, removable handle (new structure)
5	Door frame left and right brackets	30303400193	1	Door frame left and right bracket, left, K21A, black matte plastic spraying
6	Door frame left and right brackets	30303400194	1	Door frame bracket, right, K21A, black matte plastic spraying
7	Inner glass fixing block	30200900018	1	Inner glass fixing block, flame retardant nylon, lower left, F546SGF
8	Inner glass fixing block	30200900019	1	Inner glass fixing block,flame retardant nylon,lower right,F546SGF
9	hinge	30400600021	2	Hinge Assembly, Series 21, for North American 30" Series Oven Quadruple Glazed Sheet Metal Sliding Doors (16-17KG), Universal
10	Middle glass	30500300088	1	Intermediate Glass,K21,Uncoated,Tempered,4mm,640.6mmX525.6mm
11	Middle glass limit block	30303700002	2	Intermediate glass limit block, K21A, black matte plastic spraying
12	Middle glass fixing block	30201000008	2	Intermediate glass fixing block, silicone rubber, K28JSP, lower pads
13	Inner glass	30500400149	1	Inner glass, K21(A), LOW-E, tempered glass, 4mm, all black, 657.8mmX526.2mmX4mm
14	Handle washer	30201400005	2	Handle gasket,K1,PA66
15	Handle fixing plate	30303600001	1	Handle fixing plate,K13,black matte plastic spraying
16	Middle glass inlay	30201200006	0.01	Center Glass Insert,Silicone Rubber 30mm,30 inch Oven
17	Middle glass fixing block	30201000003	2	Center Glass Retainer,Silicone Rubber,K21A
18	Door bracket	30303500060	1	Upper door bracket,K21A,glossy black enamel,BTC1,0.7mm,self-cleaning
19	Middle glass	30500300002	1	Center Glass,K21A,ROYI Glass,Coated,4mm,No
20	Complete door assembly		1	

CONTROL PANEL & COOKTOP



No	Part Name	Part number	QTY	Part Description
1	Antique Brass knob	30402500472	4	Knob, Series 127 - Induction (without lock), Silk Screen, 30" Beveled Basic, Electroplate, Zinc Alloy, Bronze
1	Stainless Steel knob	30402500470	4	Knob, Series 127 - Induction (without lock), silkscreen, 30" beveled base, plated, zinc alloy, stainless steel, natural color
2	Antique Brass Knob base	30402500465	4	Knob Base, Series 127, Electroplated, Unsilkscreened, Zinc Alloy, Bronze, with Series 127 Knob
2	Stainless Steel Knob base	30402500464	4	Knob base, #127, plating, non-silkscreen, zinc alloy, stainless steel, natural color, with #127 knob
3	Switch board	30305900465	1	Switch plate, K30B(SFC), removable, four eyes + LED, without indicator hole, 430 stainless steel, 0.7mm
4	Rubber strip	30215300008	1	Rubber insert, K30B(GJF), silicone rubber, black, cooker panel sealing strip
5	Left and right side panels of the panel	30216300015	1	Panel Left/Right Side Plate,AD-K30B(GJF),ppt,black,right,Switch Plate Right Fixing Block,Switch Plate Right Inlay
6	Encoder switch group	30105700021	4	Encoder Switch Assembly,K30B,Push-Press Structure,Metal Shaft,Clockwise Rotation 1-9 Stages with Boost Stage,SR27AQ-D1-23F-10K-10CC,Nylon,Temperature Resistant 100°C
7	Switch panel glass	30500101396	1	Switch Panel Glass,K30B(SFI),10 Functions,Self-cleaning LED Electric Oven(Without Warming Tray Control),None,None,Black,None,4mm,Tempered Glass,None
8	Display board	30101600243	1	Display panel,K30(SFF),329*67.5mm,color,UL approved,Self-cleaning LED electric oven(without warming tray control function),Display area size 100*40mm
9	Left and right side panels of the panel	30216300014	1	Panel left and right side panel,AD-K30B(GJF),ppt,black,left,switch plate left fixing block,switch plate left inset block
10	Display holder	30200200024	1	Display Board Mounting Bracket,PP1,K30(GSF),LED Display,Black
11	Oven fixing plate	30302900315	1	Oven fixing plate,K30B(SFI),None,Galvanized sheet,0.7mm,Display board fixing plate
12	Display holder	30200200030	12	Display board mounting bracket,white nylon,Induction power board holder,F96I,Benro induction cooktop
13	Display board	30101600263	1	Display Board,4 Eye,None,Red,UL Certified,LED,3700W
14	Exhaust upper/lower plate	30303800070	1	Exhaust upper/lower plate,K30B,galvanized sheet,0.5mm,left,lower cover plate,large hotplate in front
15	Exhaust upper/lower plate	30303800069	1	Upper/lower plate of exhaust pipe, K30B(SFI), galvanized sheet, 0.5mm, left, upper cover plate, large grate in front
16	Batholith	30300500146	1	Chassis, K30B(SFI), 4-eye induction, galvanized sheet, 0.7mm, large pan in front
17	Electromagnetic module	30102900036	1	Induction module, K30B(SFI), 230V, 1200W/1500W, 1800W/2100W
18	Control panel assembly	2040500252	1	Standing Oven Panel Assembly,K30B(SFC),black enamel,BTC1 t0.6,without smoke vent,with backsplash hole
19	Cooktop panel assembly	30502201166	1	Stove glass panel,K30B(SFI),black,microcrystalline,706*531*4mm,big burner plate at front
20	Backsplash	30306200014	1	Backsplash,K30(GSF),black enamel,BTC1,0.6mm,none
21	Electromagnetic module	30102900037	1	Electromagnetic module,K30B(SFI),230V,2300W/3700W ,1200W/1500W
22	Exhaust upper/lower plate	30303800067	1	Exhaust upper/lower plate,K30B(SFI),galvanized sheet,0.5mm,right,upper cover plate
23	Exhaust upper/lower plate	30303800068	1	Exhaust top/bottom plate,K30B(SFI),Galvanized sheet,0.5mm,Right,Lower base plate
24	Adapter panel assembly	30317900031	1	Adapter plate assembly, K30B(SFI), PCB (with Benro stove plate), incl. wires

PARTS NOT SHOWN ON PLAN

No	Part Name	Part number	QTY	Part Description
1	Connecting wires	30102101222	1	Connecting Wire,220V-240V,UL Listed,Electric Oven,Wire Harness,K30B,LED Oven Section,Self-Cleaning,Flame Retardant Rating(VW-1),Double Round Lights
2	Connecting wires	30102100673	1	Connecting Wire,240V,UL Listed,Door Lock,Wire Harness,K30,Flame Retardant Grade(VW-1)
3	Connecting wires	30102100672	1	Connecting Wire,220V-240V,UL Listed,Thermal Protector,Wire Harness,K30,Flame Retardant Grade(VW-1)
4	Connecting wires of cooktop	30105300155	1	Stove Connection Wire,K30(GSF),Communication Wire,1500mm,UL approved,LED Display