



**IMPORTANT NOTE:**

Locate the Specification Label on unit to determine exact Model Name and electrical specifications. This information is needed to identify the correct replacement parts. See exploded view illustration(s) for Specification Label location.

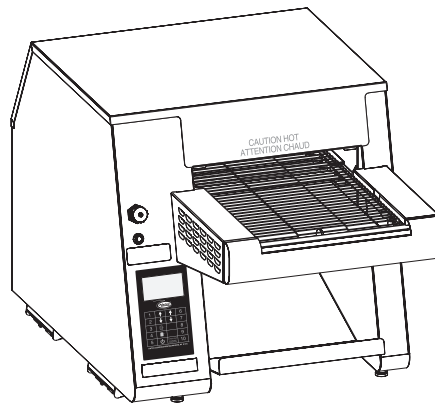
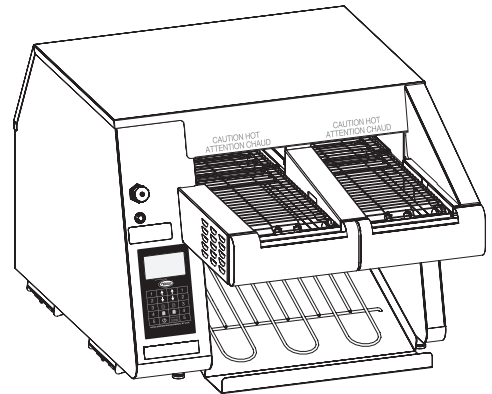
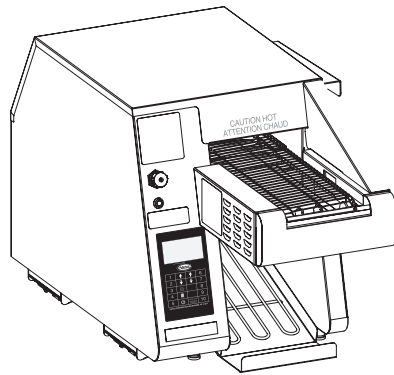


Use of replacement parts other than those supplied by Hatco Corporation may result in damage to unit or injury to personnel and will void all warranties.

# Intelligent Toast-Qwik® Conveyor Toaster

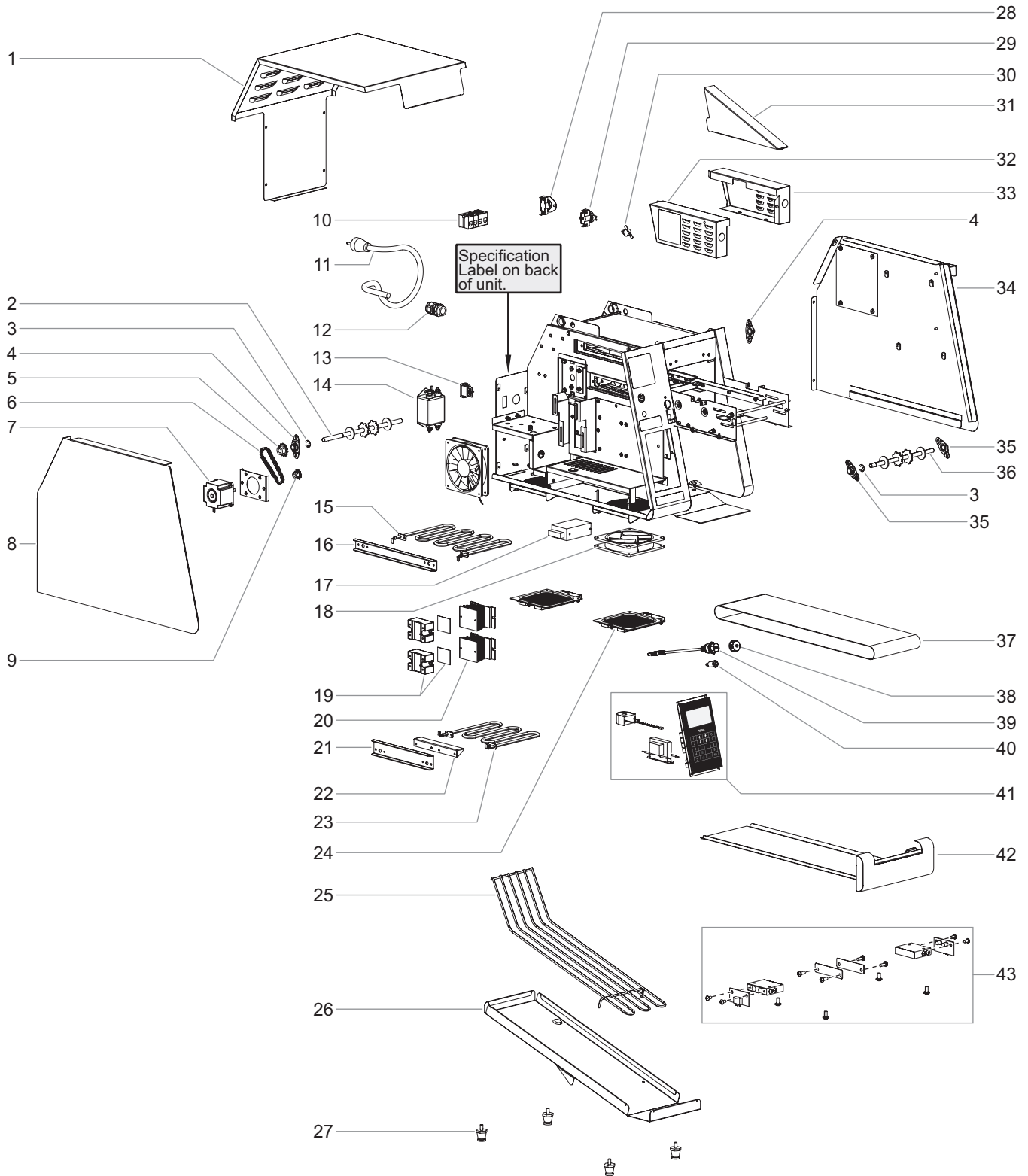
## ITQ Series

<u>Model Name</u>	<u>Page</u>
ITQ-875-1C.....	2
ITQ-1000-1C.....	4
ITQ-1750-2C.....	6



# Replacement Parts List

# Model ITQ-875-1C



## Parts For Model ITQ-875-1C

Item	Description	Part Number	Qty.
1	Top Cover	04.56.282.00	1
2	Drive Shaft Assembly	04.56.293.00	1
3	E-Ring	05.11.035.00	2
4	Bearing Assembly, Rear	04.05.286.00	2
5	Driven Sprocket	05.09.062.00	1
6	Drive Chain	05.03.075.00	1
7	Stepper Motor, Conveyor	02.12.121.00	1
8	Side Cover, Left	04.05.988.00	1
9	Drive Sprocket	05.09.061.00	1
10	Terminal Block	R02.15.047.00	1
11	Power Cord w/Plug		
	NEMA 6-20P (standard)	02.18.111.00	1
	NEMA L6-20P (optional)	02.18.186.00	1
	BS-1363	02.18.068.00	1
	CEE 7/7 Schuko	02.18.038.00	1
	AS-3113	02.18.105.00	1
12	Cord Grip	R02.20.259.00	1
13	Power Switch, Rocker	02.19.161.00	1
14	EMI Filter	02.13.359.00	1
15	Heating Element, Upper, 1650 W		
	208 V	02.05.960.00	1
	240 V	02.05.987.00	1
	230 V	02.05.1053.00	1
16	Bracket, Top Element	04.05.975.00	1
17	Power Supply	02.17.064.00	1
18	Fan, Cooling	02.12.163.00	2
19	Solid State Relay Kit (includes thermal pad)	R02.01.355.00	2
20	Heat Sink, Relay	04.09.872.00	2
21	Bracket, Bottom Element	04.05.897.00	1
22	Belt Support, Element Bracket	04.05.874.00	1
23	Heating Element, Lower, 1050 W		
	208 V	02.05.961.00	1
	240 V	02.05.988.00	1
	230 V	02.05.963.00	1

Item	Description	Part Number	Qty.
24	Filter, Wire Mesh	R02.12.138.00	2
25	Toast Chute Slide	04.56.284.00	1
26	Toast Chute	04.56.283.00	1
27	Leg, 1"	R05.30.081.00	4
28	High Limit Thermostat, Mechanical, 250°F	R02.16.118.00	1
29	High Limit T-Stat, Manual	02.16.195.00	1
30	High Limit Thermostat, Mechanical, 275°F	02.16.192.00	1
31	Heat Shield	04.56.199.00	1
32	Side Cover, Conveyor, Left	04.56.122.00	1
33	Side Cover, Conveyor, Right	04.56.123.00	1
34	Side Cover, Right	04.56.560.00	1
35	Bearing Assembly, Front	04.05.387.00	2
36	Shaft Assembly, Front	04.56.302.00	1
37	Conveyor Belt	05.03.073.00	1
38	Waterproof Cap, USB	02.18.513.00	1
39	USB Cable	02.18.478.00	1
40	Indicator Light, Red	02.19.151.00	1
41	Electronic Touchpad Control Kit *	R02.01.385A.00	1
42	Crumb Tray	R04.56.285.00	1
43	Product Sensor Kit	R02.01.368.00	1
	Wiring Diagram		
	120 V	10-01-1259	
	230 V	10-01-1379	

\* Electronic Touchpad Control Kit contains electronic control, current sensor, 24 V transformer, and a USB flash drive. Failure of any one of these components requires replacement of all three.

NOTE: All electrical components on Model ITQ-875-1C are designed to operate on supply voltages between 208 V and 240 V.

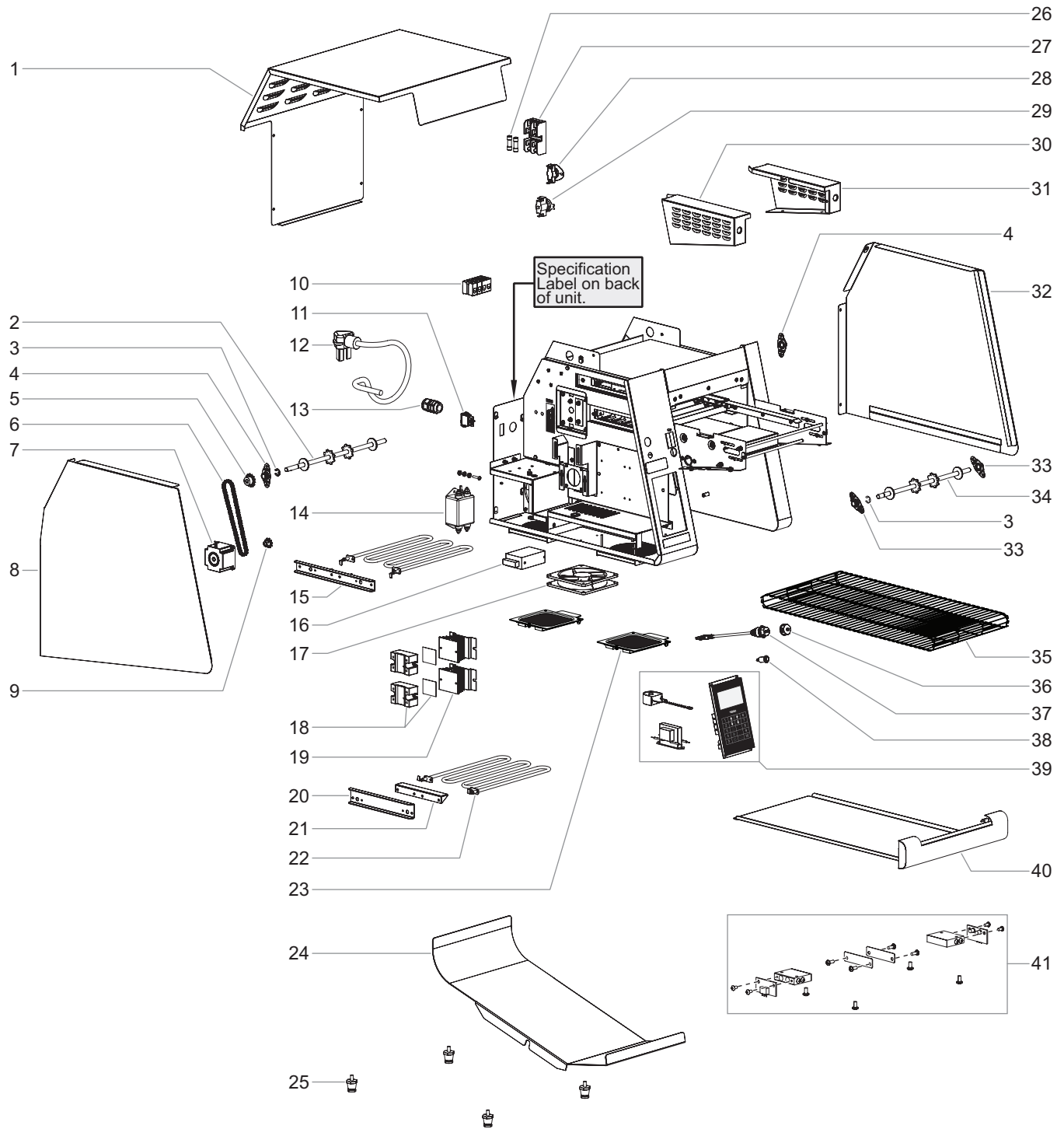
The shaded areas contain electrical information for **International models only**.

NOTE: The last four digits in a ten digit numerical serial number are the manufacturing date code.

Example: Serial number 962506**1931** has a date code of "1931" which indicates the following: 1931

└─ Week Thirty-One  
└─ Year 2019

# Model ITQ-1000-1C



## Parts For Model ITQ-1000-1C

Item	Description	Part Number	Qty.
1	Top Cover	04.05.920.00	1
2	Drive Shaft Assembly	04.05.932.00	1
3	E-Ring	05.11.035.00	2
4	Bearing Assembly, Rear	04.05.286.00	2
5	Driven Sprocket	05.09.062.00	1
6	Drive Chain	05.03.070.00	1
7	Stepper Motor, Conveyor	02.12.121.00	1
8	Side Cover, Left	04.05.958.00	1
9	Drive Sprocket	05.09.061.00	1
10	Terminal Block	R02.15.047.00	1
11	Power Switch, Rocker	02.19.161.00	1
12	Power Cord w/Plug		
	NEMA 6-30P (standard)	02.18.122.00	1
	NEMA L6-30P (optional)	02.18.150.00	1
	CEE 7/7 Schuko	02.18.038.00	1
	No Plug	02.18.103.00	1
13	Cord Grip	R02.20.259.00	1
14	EMI Filter	02.13.359.00	1
15	Bracket, Top Element	04.05.940.00	1
16	Power Supply	02.17.064.00	1
17	Fan, Cooling	02.12.125.00	2
18	Solid State Relay Kit (includes thermal pad)	R02.01.355.00	2
19	Heat Sink, Relay	04.09.872.00	2
20	Bracket, Bottom Element	04.05.897.00	1
21	Belt Support, Element Bracket	04.05.874.00	1
22	Heating Element		
	208–240 V, 2150 W	02.05.886.00	2
	230 V, 1800 W	02.05.953.00	2

Item	Description	Part Number	Qty.
23	Filter, Wire Mesh	R02.12.138.00	2
24	Toast Chute	04.05.921.00	1
25	Leg, 1"	R05.30.081.00	4
26	Fuse, 250 V, 15 A (includes 2)	R02.03.052.02	1
27	Fuse Block	02.03.022.00	1
28	High Limit Thermostat	R02.16.118.00	1
29	High Limit T-Stat, Manual	02.16.195.00	1
30	Side Cover, Conveyor, Left	04.05.828.00	1
31	Side Cover, Conveyor, Right	04.05.829.00	1
32	Side Cover, Right	04.05.959.00	1
33	Bearing Assembly, Front	04.05.387.00	2
34	Shaft Assembly, Front	04.05.933.00	1
35	Conveyor Belt	05.03.069.00	1
36	Waterproof Cap, USB	02.18.513.00	1
37	USB Cable	02.18.478.00	1
38	Indicator Light, Red	02.19.151.00	1
39	Electronic Touchpad Control Kit *	R02.01.385A.00	1
40	Crumb Tray	R04.56.006.00	1
41	Product Sensor Kit	R02.01.368.00	1
42	Filter Retrofit Kit (not shown) †	R04.56.145.00	1
	Wiring Diagram		
	120 V	10-01-1069	
	230 V	10-01-1246	

\* Electronic Touchpad Control Kit contains electronic control, current sensor, 24 V transformer, and a USB flash drive. Failure of any one of these components requires replacement of all three.

† Filter Retrofit Kit can be ordered for units with date code **1343** and older to replace old-style foam filters with current wire mesh filters.

**NOTE:** All electrical components on Model ITQ-1000-1C are designed to operate on supply voltages between 208 V and 240 V.

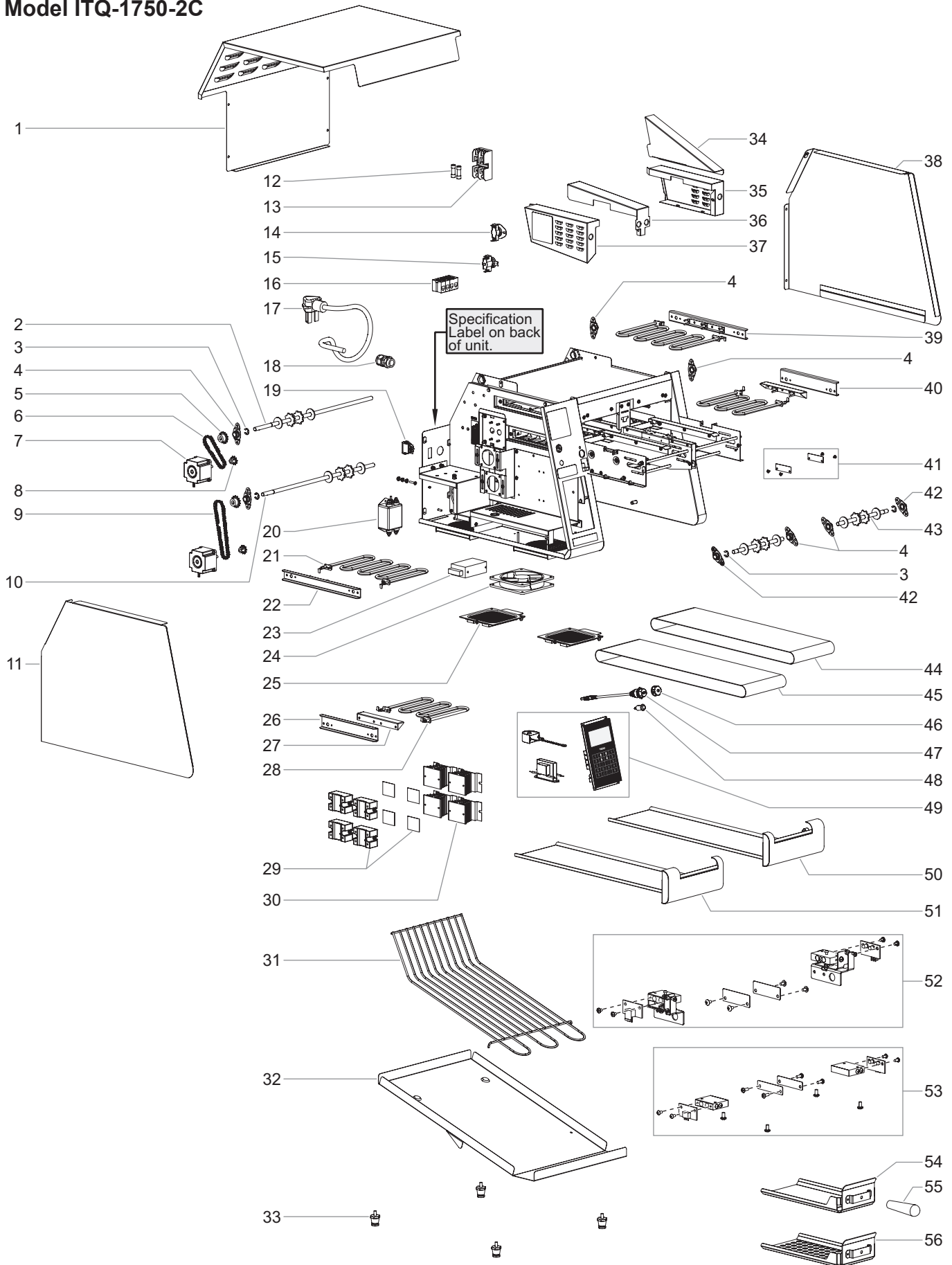
The shaded areas contain electrical information for **International models only**.

**NOTE:** The last four digits in a ten digit numerical serial number are the manufacturing date code.

Example: Serial number 962506**1931** has a date code of "1931" which indicates the following: 1931

└─ Week Thirty-One  
└─ Year 2019

Model ITQ-1750-2C



**Parts For Model ITQ-1750-2C**

Item	Description	Part Number	Qty.
1	Top Cover	04.56.098.00	1
2	Drive Shaft Assembly, Left	04.56.116.00	1
3	E-Ring	05.11.035.00	4
4	Bearing Assembly	04.05.286.00	6
5	Driven Sprocket	05.09.062.00	2
6	Drive Chain, 8.5"	05.03.075.00	1
7	Stepper Motor, Conveyor	02.12.121.00	2
8	Drive Sprocket	05.09.061.00	2
9	Drive Chain, 13"	05.03.074.00	1
10	Drive Shaft Assembly, Right	04.56.117.00	1
11	Side Cover, Left	04.05.988.00	1
12	Fuse, 250 V, 15 A (includes 2)	R02.03.052.02	2
13	Fuse Block	02.03.022.00	1
14	High Limit T-Stat	R02.16.118.00	1
15	High Limit T-Stat, Manual	02.16.195.00	1
16	Terminal Block	R02.15.047.00	1
17	Power Cord w/Plug		
	NEMA 6-30P (standard)	02.18.122.00	1
	NEMA L6-30P (optional)	02.18.150.00	1
	No Plug	02.18.103.00	1
	IEC 309	02.18.852.00	1
18	Cord Grip	R02.20.259.00	1
19	Power Switch, Rocker	02.19.161.00	1
20	EMI Filter	02.13.359.00	1
21	Heating Element, Upper, 1500 W		
	208 V	02.05.996.00	2
	240 V	02.05.997.00	2
	230 V	02.05.955.00	2
22	Bracket, Top Element	04.56.975.00	1
23	Power Supply	02.17.064.00	1
24	Fan, Cooling	02.12.125.00	2
25	Filter, Wire Mesh	R02.12.138.00	2
26	Bracket, Bottom Element	04.05.897.00	1
27	Belt Support, Element Bracket	04.05.874.00	2
28	Heating Element, Lower, 980 W		
	208 V	02.05.998.00	2
	240 V	02.05.999.00	2
	230 V	02.05.956.00	2

Item	Description	Part Number	Qty.
29	Solid State Relay Kit (includes thermal pad)	R02.01.355.00	4
30	Heat Sink, Relay	04.09.872.00	4
31	Toast Chute Slide	04.56.228.00	1
32	Toast Chute	04.56.229.00	1
33	Leg, 1"	R05.30.081.00	4
34	Heat Shield	04.56.199.00	1
35	Side Cover, Conveyor, Right	04.56.123.00	1
36	Center Cover, Conveyor	04.56.106.00	1
37	Side Cover, Conveyor, Left	04.56.122.00	1
38	Side Cover, Right	04.56.127.00	1
39	Bracket, Top Element, w/Standoff	04.56.553.00	1
40	Bracket, Bottom Element, w/ Standoff	04.56.552.00	1
41	Reflector Assembly ▲ ‡	R04.56.721.00	2
42	Bearing Assembly w/Nut, Front	04.05.387.00	2
43	Shaft Assembly, Front	04.56.115.00	2
44	Conveyor Belt, Right, 45-1-1/2"	05.03.072.00	1
45	Conveyor Belt, Left, 48"	05.03.073.00	1
46	Waterproof Cap, USB	02.18.513.00	1
47	USB Cable	02.18.478.00	1
48	Indicator Light, Red	02.19.151.00	1
49	Electronic Touchpad Control Kit *	R02.01.385B.00	1
50	Crumb Tray, Right	R04.56.100.00	1
51	Crumb Tray, Left	R04.56.099.00	1
52	Product Sensor/Reflector Kit— <b>Date Code 1716 and newer</b>	R00.02.0112.00	1
53	Product Sensor/Reflector Kit— <b>Date Code 1715 and older</b>	R02.01.368.00	1
54	Food Paddle, Standard	R04.56.182.00	1
55	Handle, Food Paddle	05.30.182.00	1
56	Food Paddle, Perforated	R04.56.183.00	1
57	Filter Retrofit Kit (not shown) †	R04.56.145.00	1
	Wiring Diagram		
	120 V	10-01-1102	
	230 V	10-01-1245	

▲ For units with date code **1715** and older, use Reflector Assembly P/N R04.56.218.00.

‡ Included with Product Sensor/Reflector Kit.

\* Electronic Touchpad Control Kit contains electronic control, current sensor, 24 V transformer, and a USB flash drive. Failure of any one of these components requires replacement of all three.

† Filter Retrofit Kit can be ordered for units with date code 1343 and older to replace old-style foam filters with current wire mesh filters.

The shaded areas contain electrical information for **International models only**.

*NOTE: The last four digits in a ten digit numerical serial number are the manufacturing date code.*

*Example: Serial number 962506**1931** has a date code of "1931" which indicates the following: 1931*

