



IMPORTANT NOTE:

Locate the Specification Label on unit to determine exact Model Name and electrical specifications. This information is needed to identify the correct replacement parts. See exploded view illustration(s) for Specification Label location.

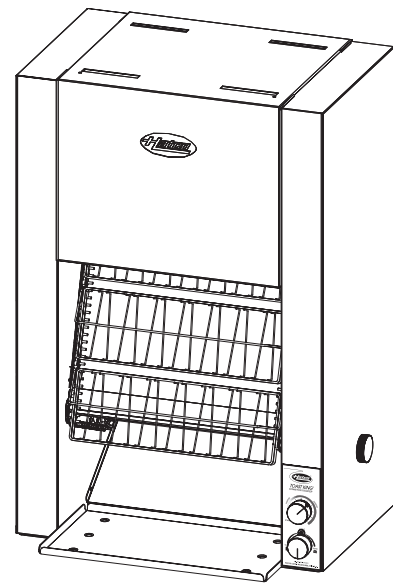
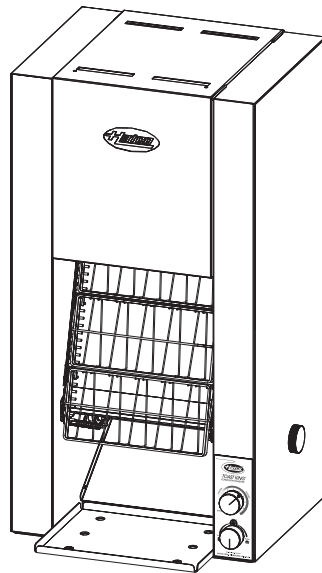


Use of replacement parts other than those supplied by Hatco Corporation may result in damage to unit or injury to personnel and will void all warranties.

Toast-King® Conveyor Toasters

TK Series

<u>Model Name</u>	<u>Page</u>	<u>Model Name</u>	<u>Page</u>	<u>Service Information</u>	<u>Page</u>
TK-72 and TK-75E	3	TK-90B	5	Conveyor Shaft	
TK-100 and TK-105E	4	TK-135B and TK-155B	6	Assembly Guide	7



Replacement Parts List

TOAST-KING® CONVEYOR TOASTERS

All Models

Model Designation

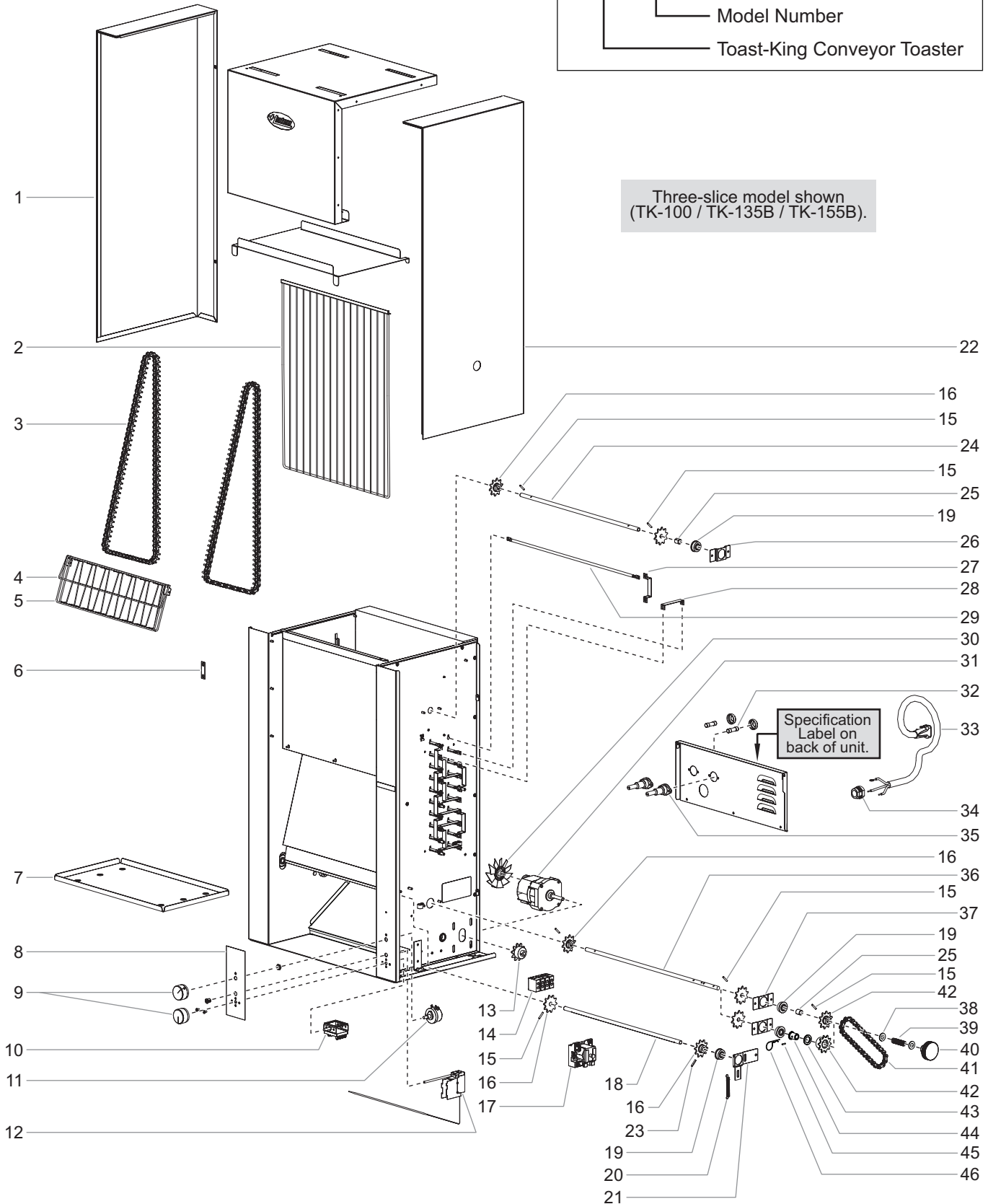
T K - X B

Buns (single-sided toasting)

Model Number

Toast-King Conveyor Toaster

Three-slice model shown
(TK-100 / TK-135B / TK-155B).



TK-72 and TK-75E Models

Item	Description	Part No.	Qty.
1	Side Cover, Left	04.05.003.00	1
2	Basket Guide	04.05.101.00	1
3	Conveyor Chain	R05.03.007A.00	2
4	Hold Down Bar	04.05.143.00	10
5	Conveyor Basket	04.05.142.00	10
6	Buss Bar, Flat	04.05.062.00	10
7	Toast Collector Pan	04.05.050.00	1
8	Label, Control Plate	07.01.217.00	1
9	Control Knob	05.30.020.00	2
10	Selector Switch		
	208 and 240 V	R02.19.082.00	1
	200, 220, 230, and 240 V	02.19.196.00	1
11	Rheostat		
	208 and 240 V	R02.13.111.00	1
	200, 220, 230, and 240 V	R02.13.125.00	1
12	Thermostat	02.16.011.00	1
13	Drive Sprocket	05.09.031.00	1
14	Terminal Block	R02.15.046.00	1
15	Spring Pin, 1/8" x 3/4"	05.08.006.00	5
16	Conveyor Chain Sprocket	05.09.020.00	6
17	Relay, Element	02.01.147.00	1
18	Shaft, Lower Front	05.07.009.00	1
19	Ball Bearing Hub	05.02.011.00	6
20	Tension Spring	05.08.001.00	1
21	Adjustable Bearing Retainer	04.30.022.00	1
22	Side Cover, Right	04.05.002.00	1
23	Spring Pin, 1/8" x 7/16"	05.08.007.00	1
24	Shaft, Upper Rear	05.07.008.00	1
25	Bearing Spacer	05.11.022.00	3
26	Upper Bearing Retainer	04.30.020.00	2
27	Buss Bar, Hat Shaped	04.05.063.00	10
28	Buss Bar, "U" Shaped	04.05.060.00	6

* Includes items 15, 19, 37–39, and 42–46.

† Not shown on page 2.

NOTE: The last four digits in a ten digit numerical serial number are the manufacturing date code: 962506**1404**

Year 2014 ————
Week Four ————

Item	Description	Part No.	Qty.
29	Heating Elements		
	208 V, 200 W (104 V)	R02.09.002.00	20
	240 V, 200 W (120 V)	R02.09.001.00	20
	200 V, 200 W (104 V)	R02.09.002.00	20
	220 V, 200 W (110 V)	R02.09.200E.00	20
	230 V, 240 V, 200 W (115 V)	R02.09.207E.00	20
30	Fan Blade, Motor	02.12.088.01	1
31	Gear Motor		
	208 V (60 Hz)	R02.12.020.00	1
	240 V (60 Hz)	R02.12.021.00	1
	200 V (50 Hz)	R02.12.020.00	1
	220 V (60 Hz)	R02.12.021.00	1
	220, 230, and 240 V (50 Hz)	R02.12.025.00	1
32	Fuse, 1 A (2-pack)	R02.03.005A.02	1
33	Power Cord		
	250 V, 20 A, NEMA 6-20P Plug	02.18.016.00	1
	250 V, 25 A, No Plug	02.18.103.00	1
34	Cord Grip		
	208, 240 V	02.20.209.00	1
	200 V	02.20.209.00	1
	220, 230, and 240 V	R02.20.259.00	1
35	Fuse Holder w/Fuse	R02.19.028.00	2
36	Shaft, Lower Rear, Threaded	05.07.007.00	1
37	Lower Bearing Retainer	04.30.021.00	2
38	Washer, Flat	05.04.369.00	1
39	Compression Spring	05.08.005.00	1
40	Manual Advance Knob	05.30.001.00	1
41	Drive Chain	05.03.038.00	1
42	Driven Sprocket	05.09.020.00	1
43	Washer, Thrust	---	---
44	Bearing	---	---
45	Pin, Spring	---	---
46	Pin, Cotter	---	---
47	Bearing Assembly * †	---	---
48	Capacitor, Power Cord (TK-72 and TK-75E CE Units) †	02.13.307.00	1
49	Diode †	02.40.002.00	1
50	Conveyor Chain Connector Link †	05.03.009A.00	2
51	Motor Relay (TK-75E CE Units) †	02.01.180.00	1
52	Capacitor, Motor Relay (TK-75E CE Units) †	02.13.303.00	1
53	Motor Resistor (TK-75E CE Units) †	02.13.325.00	1
54	Terminal Block, Power Cord (TK-72 and TK-75E CE Units) †	R02.15.035.00	1
	Wiring Diagram		
	TK-72	10-01-1046	
	TK-75E	10-01-1048	

The shaded areas contain part information for **International models only**.

NOTE: Quantities shown as a range (example = "1–4") are dependent upon the model.

TK-100 and TK-105E Models (see illustration on page 2)

Item	Description	Part No.	Qty.
1	Side Cover, Left	04.05.003.00	1
2	Basket Guide	04.05.121.00	1
3	Conveyor Chain	R05.03.007A.00	2
4	Hold Down Bar	04.05.123.00	10
5	Conveyor Basket	04.05.122.00	10
6	Buss Bar, Flat	04.05.062.00	10
7	Toast Collector Pan	04.05.051.00	1
8	Label, Control Plate	07.01.217.00	1
9	Control Knob	05.30.020.00	2
10	Selector Switch		
	208 and 240 V	R02.19.082.00	1
	200, 220, 230, and 240 V	02.19.196.00	1
11	Rheostat		
	208 and 240 V	R02.13.111.00	1
	200, 220, 230, and 240 V	R02.13.125.00	1
12	Thermostat	02.16.011.00	1
13	Drive Sprocket	05.09.031.00	1
14	Terminal Block	R02.15.046.00	1
15	Spring Pin, 1/8" x 3/4"	05.08.006.00	5
16	Conveyor Chain Sprocket	05.09.020.00	6
17	Relay	02.01.147.00	1
18	Shaft, Lower Front	05.07.006.00	1
19	Ball Bearing Hub	05.02.011.00	6
20	Tension Spring	05.08.001.00	1
21	Adjustable Bearing Retainer	04.30.022.00	1
22	Side Cover, Right	04.05.002.00	1
23	Spring Pin, 1/8" x 7/16"	05.08.007.00	1
24	Shaft, Upper Rear	05.07.005.00	1
25	Bearing Spacer	05.11.022.00	3
26	Upper Bearing Retainer	04.30.020.00	2
27	Buss Bar, Hat Shaped	04.05.063.00	10
28	Buss Bar, "U" Shaped	04.05.060.00	6
29	Heating Elements – TK-100		
	208 V, 250 W (104 V)	R02.09.017.00	20
	240 V, 250 W (120 V)	R02.09.018.00	20
	200 V, 250 W (104 V)	R02.09.017.00	20
	220 V, 250 W (110 V)	R02.09.202E.00	20
	230 V, 250 W (120 V)	R02.09.210E.00	20
	240 V, 250 W (120 V)	R02.09.210E.00	20
	Heating Elements TK-105E		
	220-230 V, 250 W (110 V)	R02.09.202E.00	4
	220-230 V, 330 W (110 V)	R02.09.221E.00	8
	220-230 V, 470 W (110 V)	R02.09.222E.00	8
	230-240 V, 250 W (110 V)	R02.09.210E.00	4
	230-240 V, 330 W (110 V)	R02.09.211E.00	8
	230-240 V, 470 W (110 V)	R02.09.212E.00	8

Item	Description	Part No.	Qty.
30	Fan Blade, Motor	02.12.088.01	1
31	Gear Motor		
	208 V (60 Hz)	R02.12.020.00	1
	240 V (60 Hz)	R02.12.021.00	1
	200 V (50 Hz)	R02.12.020.00	1
	220 V (60 Hz)	R02.12.021.00	1
	220, 230, and 240 V (50 Hz)	R02.12.025.00	1
32	Fuse, 1 A (2-pack)	R02.03.005A.02	1
33	Power Cord		
	250 V, 25 A, NEMA 6-30P Plug	02.18.017.00	1
	250 V, 25 A, No Plug	02.18.103.00	1
34	Cord Grip		
	208 and 240 V	02.20.209.00	1
	200 V	02.20.209.00	1
	220, 230, and 240 V	R02.20.259.00	1
35	Fuse Holder w/Fuse	R02.19.028.00	2
36	Shaft, Lower Rear, Threaded	05.07.004.00	1
37	Lower Bearing Retainer	04.30.021.00	2
38	Washer, Flat	05.04.369.00	1
39	Compression Spring	05.08.005.00	1
40	Manual Advance Knob	05.30.001.00	1
41	Drive Chain		
	TK-100	05.03.038.00	1
	TK-105E		
	220 and 240 V	05.03.038.00	1
	220, 240, 220/230 CE, and 230/240 CE V	05.03.064.00	1
42	Driven Sprocket		
	TK-100	05.09.020.00	1
	TK-105E		
	220 and 240 V	05.09.020.00	1
	220, 240, 220/230 CE, and 230/240 CE V	05.09.029.00	1
43	Washer, Thrust	---	---
44	Bearing	---	---
45	Pin, Spring	---	---
46	Pin, Cotter	---	---
47	Bearing Assembly *	---	---
48	Capacitor, Power Cord (TK-100 and TK-105E CE Units) †	02.13.307.00	1
49	Diode †	02.40.002.00	1
50	Conveyor Chain Connector Link †	05.03.009A.00	2
51	Motor Relay (TK-105E CE Units) †	02.01.180.00	1
52	Capacitor, Motor Relay (TK-105E CE Units) †	02.13.303.00	1
53	Motor Resistor (TK-105E CE Units) †	02.13.325.00	1
54	Terminal Block, Power Cord (TK-100 and TK-105E CE Units) †	R02.15.035.00	1
	Wiring Diagram		
	TK-100	10-01-1045	
	TK-105E	10-01-1049	

* Includes items 15, 19, 37–39, and 42–46.

† Not shown on page 2.

The shaded areas contain part information for **International models only**.

NOTE: Quantities shown as a range (example = "1–4") are dependent upon the model.



TK-90B Models (see illustration on page 2)

Item	Description	Part No.	Qty.
1	Side Cover, Left	04.05.003.00	1
2	Basket Guide	04.05.101.00	1
3	Conveyor Chain	R05.03.007A.00	2
4	Hold Down Bar	04.05.143.00	10
5	Conveyor Basket	04.05.142.00	10
6	Buss Bar, Flat	04.05.062.00	5
7	Toast Collector Pan	04.05.050.00	1
8	Label, Control Plate	07.01.054.00	1
9	Control Knob	05.30.020.00	2
10	Selector Switch		
	208 and 240 V	R02.19.082.00	1
	200, 220, 230, and 240 V	02.19.196.00	1
11	Rheostat		
	208 and 240 V	R02.13.111.00	1
	200, 220, 230, and 240 V	R02.13.125.00	1
12	Thermostat	02.16.011.00	1
13	Drive Sprocket	05.09.028.00	1
14	Terminal Block	R02.15.046.00	1
15	Spring Pin, 1/8" x 3/4"	05.08.006.00	5
16	Conveyor Chain Sprocket	05.09.020.00	6
17	Relay	---	---
18	Shaft, Lower Front	05.07.009.00	1
19	Ball Bearing Hub	05.02.011.00	6
20	Tension Spring	05.08.001.00	1
21	Adjustable Bearing Retainer	04.30.022.00	1
22	Side Cover, Right	04.05.002.00	1
23	Spring Pin, 1/8" x 7/16"	05.08.007.00	1
24	Shaft, Upper Rear	05.07.008.00	1
25	Bearing Spacer	05.11.022.00	2
26	Upper Bearing Retainer	04.30.020.00	2
27	Buss Bar, Hat Shaped		
	2-1/2" Spacing	04.05.063.00	9
	5" Spacing	04.05.061.00	2
28	Buss Bar, "U" Shaped	04.05.060.00	1

Item	Description	Part No.	Qty.
29	Heating Elements		
	208 V, 200 W (104 V)	R02.09.002.00	6
	208 V, 250 W (104 V)	R02.09.005.00	8
	240 V, 200 W (120 V)	R02.09.001.00	6
	240 V, 250 W (120 V)	R02.09.004.00	8
	220 V, 200 W (115 V)	R02.09.200E.00	6
	220 V, 250 W (115 V)	R02.09.201E.00	8
30	Fan Blade, Motor	02.12.088.01	1
31	Gear Motor		
	200 and 208 V	R02.12.020.00	1
	220 and 240 V	R02.12.021.00	1
	220, 230, and 240 V	R02.12.025.00	1
32	Fuse, 1 A (2-pack)	---	---
33	Power Cord		
	250 V, 25 A, NEMA 6-30P Plug	02.18.016.00	1
	250 V, 25 A, No Plug	02.18.075.00	1
34	Cord Grip		
	200, 208, 240 V	02.20.209.00	1
	220, 230, and 240 V	R02.20.259.00	1
35	Fuse Holder w/Fuse	---	---
36	Shaft, Lower Rear, Threaded	05.07.007.00	1
37	Lower Bearing Retainer	04.30.021.00	2
38	Washer, Flat	05.04.369.00	2
39	Compression Spring	05.08.005.00	1
40	Manual Advance Knob	05.30.001.00	1
41	Drive Chain	05.03.038.00	1
42	Driven Sprocket	R05.09.022.00	1
43	Washer, Thrust	05.11.004.00	1
44	Bearing	05.02.003.00	1
45	Pin, Spring	05.08.004.00	1
46	Pin, Cotter	05.04.352.00	1
47	Bearing Assembly*	R00.05.0103.00	1
48	Capacitor/Resistor	---	---
49	Diode †	02.40.002.00	1
50	Conveyor Chain Connector Link †	05.03.009A.00	2
	Wiring Diagram		
	208 and 240 V	HS1-4585	
	220 V	HS1-3277	

* Includes items 15, 19, 37–39, and 42–46.

† Not shown on page 2.

The shaded areas contain part information for **International models only**.

NOTE: Quantities shown as a range (example = "1–4") are dependent upon the model.

NOTE: The last four digits in a ten digit numerical serial number are the manufacturing date code: 962506**1404**

Year 2014 ————
 Week Four ————

TK-135B and TK-155B Models

Item	Description	Part No.	Qty.
1	Side Cover, Left	04.05.003.00	1
2	Basket Guide	04.05.121.00	1
3	Conveyor Chain	R05.03.007A.00	2
4	Hold Down Bar	04.05.123.00	10
5	Conveyor Basket	04.05.122.00	10
6	Buss Bar, Flat	04.05.062.00	5-10
7	Toast Collector Pan	04.05.051.00	1
8	Label, Control Plate		
	TK-135B	07.01.054.00	1
	TK-155B	07.01.215.00	1
9	Control Knob	05.30.020.00	2
10	Selector Switch		
	208 and 240 V	R02.19.082.00	1
	200, 220, 230, and 240 V	02.19.196.00	1
11	Rheostat		
	208 and 240 V	R02.13.111.00	1
	200, 220, 230, and 240 V	R02.13.125.00	1
12	Thermostat	02.16.011.00	1
13	Drive Sprocket		
	TK-135B	05.09.028.00	1
	TK-155B	05.09.025.00	1
14	Terminal Block		
	TK-135B (3 pole)	R02.15.046.00	1
	TK-155B (5 pole)	R02.15.047.00	1
15	Spring Pin, 1/8" x 3/4"	05.08.006.00	5
16	Conveyor Chain Sprocket	05.09.020.00	6
17	Relay (TK-155B only)	02.01.008.00	1
18	Shaft, Lower Front	05.07.006.00	1
19	Ball Bearing Hub	05.02.011.00	6
20	Tension Spring	05.08.001.00	1
21	Adjustable Bearing Retainer	04.30.022.00	1
22	Side Cover, Right	04.05.002.00	1
23	Spring Pin, 1/8" x 7/16"	05.08.007.00	1
24	Shaft, Upper Rear	05.07.005.00	1
25	Bearing Spacer	05.11.022.00	2
26	Upper Bearing Retainer	04.30.020.00	2
27	Buss Bar, Hat Shaped		
	2-1/2" Spacing	04.05.063.00	8
	5" Spacing	04.05.061.00	2
28	Buss Bar, "U" Shaped	04.05.060.00	2-6
29	Heating Elements – TK-135B Models		
	208 V, 330 W (104 V)	R02.09.015.00	10
	208 V, 250 W (104 V)	R02.09.017.00	4
	240 V, 330 W (120 V)	R02.09.016.00	10
	240 V, 250 W (120 V)	R02.09.018.00	4
	230 V, 330 W (115 V)	R02.09.211E.00	10
	230 V, 250 W (110 V)	R02.09.202E.00	4
	240 V, 330 W (120 V)	R02.09.211E.00	10
	240 V, 250 W (120 V)	R02.09.210E.00	4
	230/240 V, 330 W (120 V)	R02.09.211E.00	10
	230/240 V, 250 W (120 V)	R02.09.210E.00	4

Item	Description	Part No.	Qty.
29	Heating Elements – TK-155B Models		
	208 V, 330 W (104 V)	R02.09.015.00	6
	208 V, 250 W (104 V)	R02.09.017.00	10
	208 V, 125 W (104 V)	R02.09.020.00	4
	240 V, 330 W (120 V)	R02.09.016.00	6
	240 V, 250 W (120 V)	R02.09.018.00	10
	240 V, 125 W (120 V)	R02.09.019.00	4
	220 V, 330 W (110 V)	R02.09.221E.00	8
	220 V, 250 W (110 V)	R02.09.202E.00	8
	220 V, 125 W (110 V)	R02.09.045E.00	4
	230 V, 330 W (115 V)	R02.09.211E.00	8
	230 V, 250 W (110 V)	R02.09.202E.00	8
	230 V, 125 W (115 V)	R02.09.213E.00	4
30	Fan Blade, Motor	02.12.088.01	1
31	Gear Motor		
	200 and 208 V	R02.12.020.00	1
	220 and 240 V	R02.12.021.00	1
	220, 230, and 240 V	R02.12.025.00	1
32	Fuse, 1 A (2-pack)	R02.03.005A.02	1
33	Power Cord		
	240 V, 20 A, NEMA 6-20P Plug	02.18.016.00	1
	250 V, 25 A, NEMA 6-30P Plug (TK-135B, 208 V)	02.18.017.00	1
	250 V, 25 A, No Plug	02.18.103.00	1
34	Cord Grip		
	208 and 240 V	02.20.209.00	1
	220, 230, and 240 V	R02.20.259.00	1
35	Fuse Holder w/Fuse	R02.19.028.00	2
36	Shaft, Lower Rear, Threaded	05.07.004.00	1
37	Lower Bearing Retainer	04.30.021.00	2
38	Washer, Flat	05.04.369.00	2
39	Compression Spring	05.08.005.00	1
40	Manual Advance Knob	05.30.001.00	1
41	Drive Chain		
	TK-135B Models	05.03.064.00	1
	TK-155B Models	05.03.065.00	1
42	Driven Sprocket	R05.09.022.00	1
43	Washer, Thrust	05.11.004.00	1
44	Bearing	05.02.003.00	1
45	Pin, Spring	05.08.004.00	1
46	Pin, Cotter	05.04.352.00	1
47	Bearing Assembly*	R00.05.0103.00	1
48	Capacitor/Resistor (TK-135B CE units) †	02.13.307.00	1
49	Diode †	02.40.002.00	1
50	Conveyor Chain Connector Link †	05.03.009A.00	2
51	Heater Diode Assembly (TK-155B) †	AS.660.00	1
	Wiring Diagram		
	TK-135B	10-01-1043	
	TK-155B	10-01-1044	

* Includes items 15, 19, 37-39, and 42-46.

† Not shown on page 2.

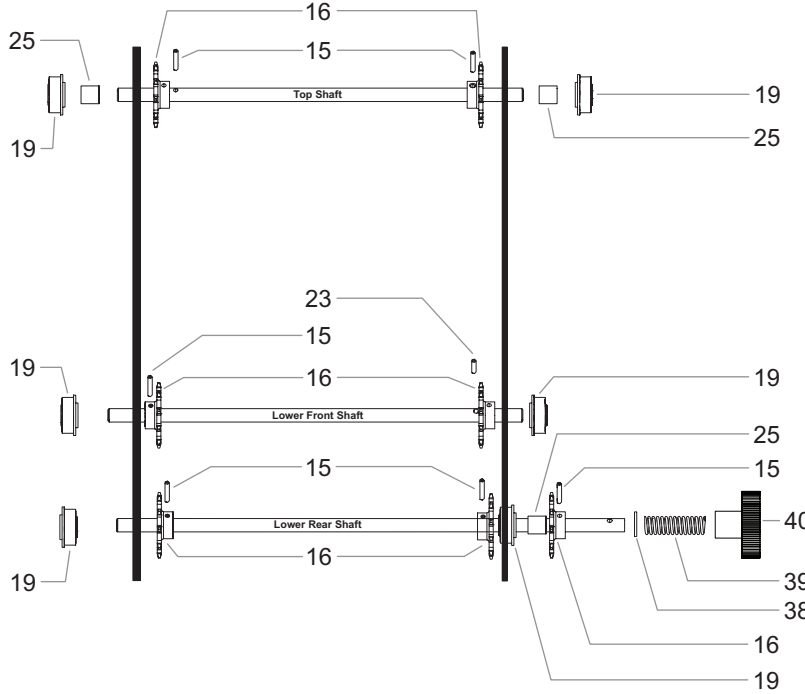
The shaded areas contain part information for **International models only**.

NOTE: Quantities shown as a range (example = "1-4") are dependent upon the model.



Conveyor Shaft Assembly Guide — Sprocket and Pin Arrangement

TK-72, TK-75E, TK-100, and TK-105E Models



Item	Description	Part No.
15	Spring Pin, 1/8" x 3/4"	05.08.006.00
16	Conveyor Sprocket	05.09.020.00
19	Ball Bearing Hub	05.02.011.00
23	Spring Pin, 1/8" x 7/16"	05.08.007.00
25	Bearing Spacer	05.11.022.00
38	Washer, Flat	05.04.369.00
39	Compression Spring	05.08.005.00
40	Manual Advance Knob	05.30.001.00
42	Driven Sprocket	05.09.022.00
43	Washer, Thrust	05.11.004.00
44	Bearing	05.02.003.00
45	Spring Pin, 3/32" x 7/16"	05.08.004.00
46	Pin, Cotter	05.04.352.00

TK-90B, TK-135B, and TK-155B Models

