



**IMPORTANT NOTE:**

Locate the Specification Label on unit to determine exact Model Name and electrical specifications. This information is needed to identify the correct replacement parts. See exploded view illustration(s) for Specification Label location.

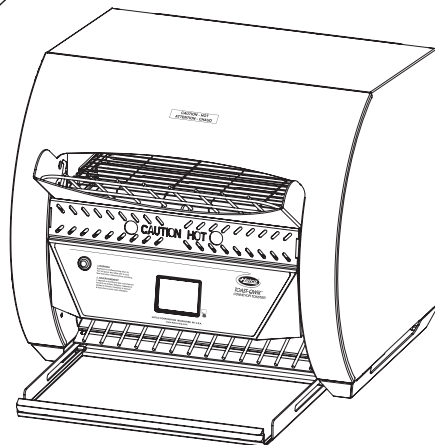
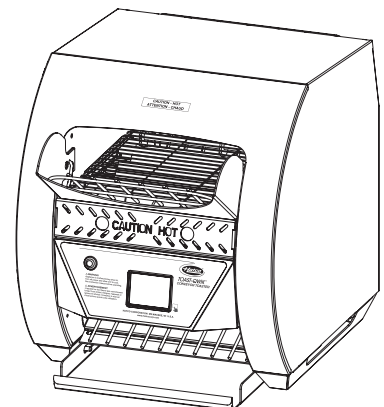
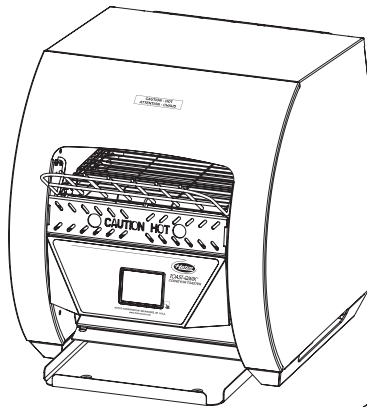


Use of replacement parts other than those supplied by Hatco Corporation may result in damage to unit or injury to personnel and will void all warranties.

# Toast-Qwik® Conveyor Toasters

## TQ3 Series

<u>Model Name</u>	<u>Page</u>	<u>Model Name</u>	<u>Page</u>	<u>Model Name</u>	<u>Page</u>
TQ3-400 .....	2	TQ3-500 .....	2	TQ3-2000 .....	4
		TQ3-500H .....	2	TQ3-2000H .....	4
		TQ3-900 .....	2		
		TQ3-900H .....	2		

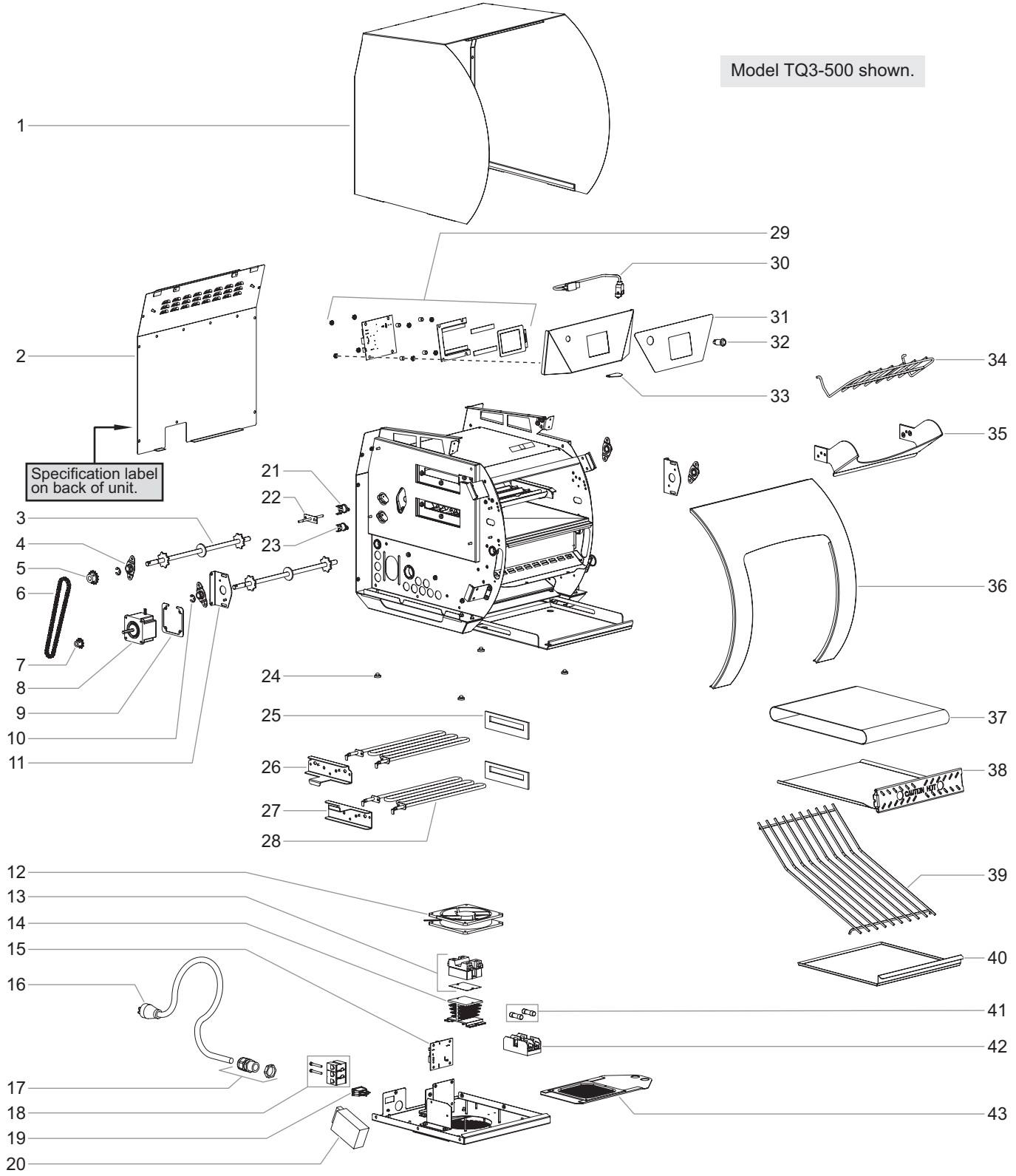


# Replacement Parts List

# Hatco Toast-Qwik® Conveyor Toasters

## Models TQ3-400, TQ3-500, TQ3-500H, TQ3-900, and TQ3-900H

Model TQ3-500 shown.



**NOTE:** The last four digits in a ten digit numerical serial number are the manufacturing date code.

Example: Serial number 962506**1931** has a date code of "1931" which indicates the following: 1931

— Week Thirty-One  
— Year 2019

**Parts for Models TQ3-400, TQ3-500, TQ3-500H, TQ3-900, and TQ3-900H**

Item	Description	Part Number	Qty.
1	Casing Cover		
	Stainless Steel	04.56.667.00	1
	Black	04.56.573.01	1
	Red	04.56.573.03	1
2	Rear Cover	04.56.572.00	1
3	Shaft Assembly	04.05.386.00	2
4	Bearing Assembly	04.05.286.00	4
5	Driven Sprocket, 14 Tooth, 3/8"	05.09.062.00	1
6	Drive Chain	05.03.076.00	1
7	Drive Sprocket, 10 Tooth, 1/4"	05.09.061.00	1
8	Stepper Motor, Conveyor	02.12.121.00	1
9	Motor Clamp	04.56.695.00	1
10	E-Ring	05.11.035.00	2
11	Conveyor Take-Up Bracket	04.56.234.00	2
12	Fan, Cooling, 12 V	02.12.163A.00	1
13	Relay, Solid State (w/thermal pad)	R02.01.458.00	1
14	Heat Sink	04.09.872.00	1
15	Printed Circuit Board (motor and power supply)	02.01.487.00	1
16	Power Cord w/Plug		
	TQ3-400		
	120 V, NEMA 5-15P †	02.18.284.00	1
	TQ3-500/500H		
	200 V, JIS C 8303 (15A, 250 V)	02.18.447.00	1
	208, 240 V, NEMA 6-15P ‡	02.18.036.00	1
	220-230 V, CEE 7/7 Schuko	02.18.038.00	1
	220-230 V, CCC 10 A	02.18.598.00	1
	220, 220-230, 230-240 V, BS-1363	02.18.068.00	1
	230-240 V, AS 3112	02.18.207.00	1
	TQ3-900/900H		
	200 V, No plug	02.18.103.00	1
	208, 240 V, NEMA 6-20P ‡ ■	02.18.111.00	1
	220-230 V, CEE 7/7 Schuko	02.18.038.00	1
	220-230 V, CCC 15 A	02.18.907.00	1
	220, 230-240 V, BS-1363	02.18.068.00	1
	230-240 V, AS 3112	02.18.105.00	1
17	Cord Grip, Heavy Duty	R02.20.259.00	1
18	Terminal Block	R02.15.046.00	1
19	Rocker Switch, On/Off	02.19.161.00	1
20	Power Supply, 100-240 VAC, 12 V	02.17.064.00	1
21	High Limit—Surface, 400°F *	02.16.206.00	1
22	Probe, RTD, 100 ohm	02.01.192.00	1
23	High Limit—Surface, 105°F	02.16.120.00	1
24	Foot	R05.30.068.00	4
25	Gasket, Heating Element	05.05.517.00	2

\* Not used in Model TQ3-400.

† Power cord P/N 02.18.185.00 with NEMA 5-20P plug required for Canada.

‡ Optional power cord P/N 02.18.122.00 with right angle NEMA 6-30P plug available.

■ Optional power cord P/N 02.18.016.00 with right angle NEMA 6-20P plug available.

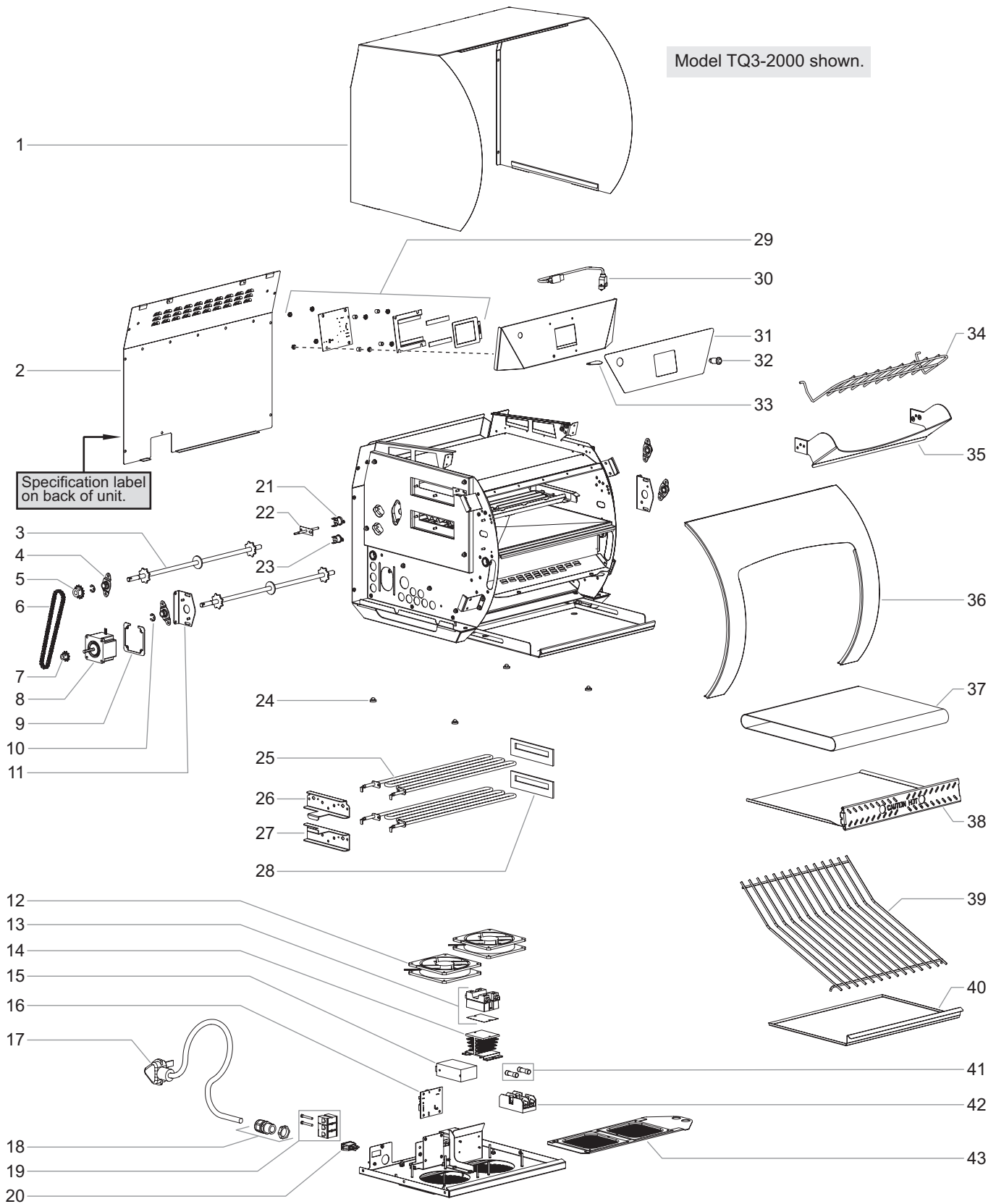
▲ Used in units with optional power cord P/N 02.18.122.00 only.

The shaded areas contain electrical information for **International models only.**

Item	Description	Part Number	Qty.
26	Element Bracket, Top		
	TQ3-400	04.05.335.00	1
	TQ3-500/500H/900/900H	04.56.193.00	1
27	Element Bracket, Bottom		
	TQ3-400	04.56.665.00	1
	TQ3-500/500H/900/900H	04.56.538.00	1
28	Heating Element		
	TQ3-400, 880 W , 120 V	02.09.253.00	2
	TQ3-500/500H, 1100 W		
	200, 208 V	02.09.311.00	2
	220, 220-230 V	02.09.313.00	2
	230-240, 240 V	02.09.312.00	2
	TQ3-900, 1500 W		
	200, 208 V	02.09.294.00	2
	220, 220-230 V	02.09.303.00	2
	230-240, 240 V	02.09.302.00	2
	TQ3-900H		
	Upper, 1650 W		
	200, 208V	02.09.304.00	1
	220, 220-230 V	02.09.306.00	1
	230-240, 240 V	02.09.305.00	1
	Lower, 1350 W		
	200, 208V	02.09.307.00	1
	220, 220-230 V	02.09.309.00	1
	230-240, 240 V	02.09.308.00	1
29	Touchscreen Control Assembly	R02.01.448.00	1
30	USB Cable	02.20.515.00	1
31	Label, Control Panel		
	TQ3-400	07.01.450.00	1
	TQ3-500/500H/900/900H	07.01.436.00	1
32	Indicator Light, Red *	02.19.151.00	1
33	USB Port Cover	04.56.705.00	1
34	Feed Ramp		
	TQ3-400	04.56.766.00	1
	TQ3-500/500H/900/900H		1
	Standard	04.56.648.00	1
	Extended	04.56.723.00	1
35	Front Heat Shield *		
	TQ3-500/900	04.56.647.00	1
	TQ3-500H/900H	04.56.664.00	1
36	Front Trim		
	TQ3-400/500/900		
	Stainless Steel	04.56.616.00	1
	Black	04.56.574.01	1
	Red	04.56.574.03	1
	TQ3-500H, 900H		
	Stainless Steel	04.56.709.00	1
	Black	04.56.589.01	1
	Red	04.56.589.03	1
37	Conveyor Belt	05.03.077.00	1
38	Crumb Tray	R04.56.531.00	1
39	Toast Chute Slide *	04.56.704.00	1
40	Catch Tray, Removable		
	TQ3-400	04.56.767.00	1
	TQ3-500/500H/900/900H	04.56.687.00	1
41	Fuse, 15A (2 pack) ▲	R02.03.052.02	1
42	Fuse Block ▲	02.03.022.00	1
43	Filter Assembly	R04.56.685.00	1

# Hatco Toast-Qwik® Conveyor Toasters

## Models TQ3-2000 and TQ3-2000H



**Parts for Models TQ3-2000 and TQ3-2000H**

Item	Description	Part Number	Qty.
1	Casing Cover		
	Stainless Steel	04.56.787.00	1
	Black	04.56.730.01	1
	Red	04.56.730.03	1
2	Rear Cover	04.56.744.00	1
3	Shaft Assembly	04.05.386.00	2
4	Bearing Assembly	04.05.286.00	4
5	Driven Sprocket, 14 Tooth, 3/8"	05.09.062.00	1
6	Drive Chain	05.03.076.00	1
7	Drive Sprocket, 10 Tooth, 1/4"	05.09.061.00	1
8	Stepper Motor, Conveyor	02.12.121.00	1
9	Motor Clamp	04.56.695.00	1
10	E-RIng	05.11.035.00	2
11	Conveyor Take-Up Bracket	04.56.234.00	2
12	Fan, Cooling, 12 V	02.12.163A.00	2
13	Relay, Solid State (w/thermal pad)	R02.01.458.00	1
14	Heat Sink	04.09.872.00	1
15	Power Supply, 100–240 VAC, 12 V	02.17.064.00	1
16	Printed Circuit Board (motor and power supply)	02.01.487.00	1
17	Power Cord w/Plug		
	208, 240 V, NEMA 6-230P	02.18.122.00	1
	200, 220, 230–240, 230–240 V, No plug	02.18.103.00	1
18	Cord Grip, Heavy Duty	R02.20.259.00	1
19	Terminal Block	R02.15.046.00	1
20	Rocker Switch, On/Off	02.19.161.00	1
21	High Limit—Surface, 400°F	02.16.206.00	1
22	Probe, RTD, 100 ohm	02.01.192.00	1
23	High Limit—Surface, 105°F	02.16.120.00	1
24	Foot	R05.30.068.00	4
25	Heating Element		
	TQ3-2000, 2000 W		
	200, 208V	02.09.314.00	2
	220, 220–230 V	02.09.316.00	2
	230–240, 240 V	02.09.315.00	2
	TQ3-2000H		
	Upper, 2200 W		
	200, 208V	02.09.317.00	1
	220, 220–230 V	02.09.319.00	1
	230–240, 240 V	02.09.318.00	1
	Lower, 1800 W		
	200, 208V	02.09.320.00	1
	220, 220–230 V	02.09.322.00	1
	230–240, 240 V	02.09.321.00	1

Item	Description	Part Number	Qty.
26	Element Bracket, Top	04.56.193.00	1
27	Element Bracket, Bottom	04.56.538.00	1
28	Gasket, Heating Element	05.05.517.00	2
29	Touchscreen Control Assembly	R02.01.448.00	1
30	USB Cable	02.20.515.00	1
31	Label, Control Panel	07.01.446.00	1
32	Indicator Light, Red	02.19.151.00	1
33	USB Port Cover	04.56.705.00	1
34	Feed Ramp		
	Standard	04.56.763.00	1
	Extended	04.56.794.00	1
35	Front Heat Shield		
	TQ3-2000	04.56.745.00	1
	TQ3-2000H	04.56.733.00	1
36	Front Trim		
	TQ3-2000		
	Stainless Steel	04.56.785.00	1
	Black	04.56.732.01	1
	Red	04.56.732.03	1
	TQ3-2000H		
	Stainless Steel	04.56.786.00	1
	Black	04.56.750.01	1
	Red	04.56.750.03	1
37	Conveyor Belt	05.03.079.00	1
38	Crumb Tray	R04.56.749.00	1
39	Toast Chute Slide	04.56.726.00	1
40	Catch Tray, Removable	04.56.754.00	1
41	Fuse, 15A (2 pack) ▲	R02.03.052.02	1
42	Fuse Block ▲	02.03.022.00	1
43	Filter Assembly	R04.56.739.00	1

▲ Used in units with optional power cord P/N 02.18.122.00 only.

The shaded areas contain electrical information for **International models only**.

**NOTE:** The last four digits in a ten digit numerical serial number are the manufacturing date code.

Example: Serial number 962506**1931** has a date code of "1931" which indicates the following: 1931

└─ Week Thirty-One  
└─ Year 2019